



PARTS LIST

550-1100 LITER POLY ELECTRIC SPREADER (US 800-1450 POLY ELECTRIC SPREADER)

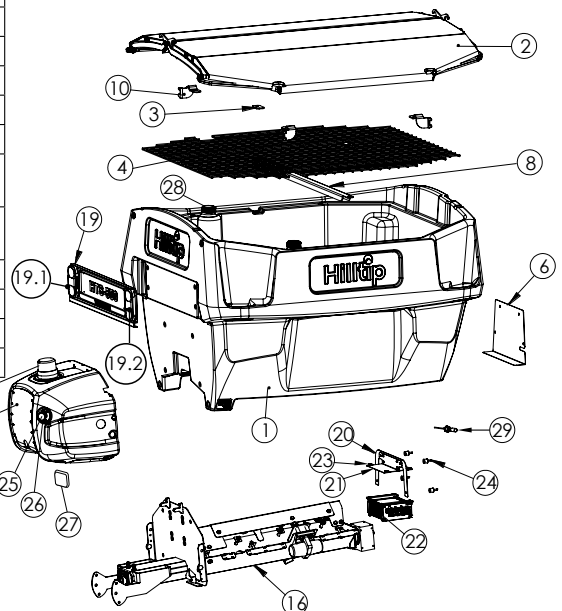
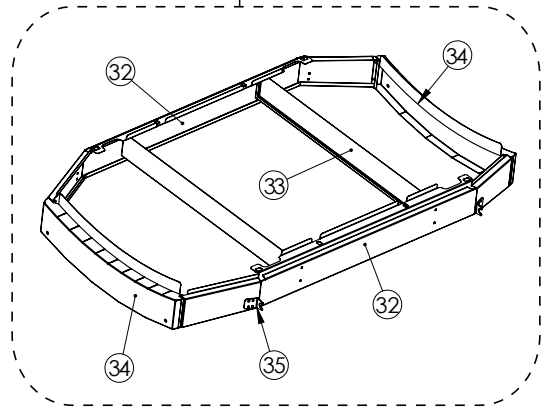
SPREADER ASSEMBLY	2
ELECTRICAL COMPONENTS	3
CONTROLLER ASSEMBLY	3
CABLES.....	4
CHUTE ASSEMBLY	5
SPINNER ASSEMBLY	6
END OF MATERIAL SENSOR KIT (OPTIONAL)	6
AUGER DRIVE ASSEMBLY.....	7
SPINNER & AUGER MOTOR GEARBOX	8
GEARBOX SEAL KIT	9
TARP COVER ASSEMBLY	10
SLIDE STOP KIT (OPTIONAL).....	11
CONNECTORS.....	12
HEAVY DUTY CONNECTORS	16
TECHNICAL SPECIFICATIONS.....	17

This manual replaces all editions with an earlier date.

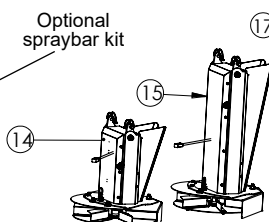
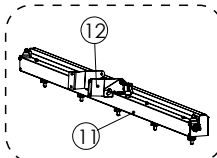
SPREADER ASSEMBLY

Item	Qty	Part no.	Description	Red	Orange	Gray
1	1		IceStriker 550 & 750	H21700	H21701	H21702
	1		IceStriker 850 & 1100	H21801	H21802	H21803
2	1	H21768	Cover assembly (550)			
	1	H22115	Cover assembly (850)			
3	2	H21763	Bracket			
4	1	H21727	Top screen (550 & 750)			
	1	H22133	Top screen (850 & 1100)			
6	1	H21776	Cover plate			
8	1	H22485	Plate			
10	2	H21787	Bracket (right)			
	2	H21788	Bracket (left)			
11	1	H22583	Bar assembly (optional)			
12	1	H23700	Bracket (optional)			
14	1	H24418	Chute assembly			
ns	1	H25110	Medium chute assembly			
15	1	H24465	Long chute assembly			
16	1	H25630	Auger drive assembly			
17	1	H22224	Beacon light			
18	1	H28122	Pre-assembled rear cover			
19	1	H21307	Rear light & license plate kit			
19.1	1	H22401	LED rear light assembly, drivers side			
19.2	1	H22402	LED rear light assembly, passenger side			
ns	1	H23437	Cable/7-pin harness			
ns	1	H23436	Cable/13-pin harness			
20	1	H24142	Plate			
21	1	H24143	Bracket			
22	1	H22096	Spreader module			
23	4	HF19340	Cage nut M5 Stainless			
24	4	H24772	Vibration dampener SS			
25	1	H22220	Emergency stop button			
26	1	H27644	Emergency stop protective cover			
27	1	H21864	LED work light red (optional)			
	1	H26681	LED work light white (optional)			
28	1	H22091	Tank cap			
29	1	H22645	Level sensor			
ns	1	H22112	Spreader fastening kit			
31	1	H27024	Optional extension kit for model 750 (inform color when placing order)			
	1	H24065	Optional extension kit for model 1100 (inform color when placing order)			
32	2	H24066	Side extension			
33	2	H24071	Cross bar for extension			
34	2	H24068	Short side extension			
35	4	H24423	Bracket			

31 Optional extension kit for model 1100, H24065



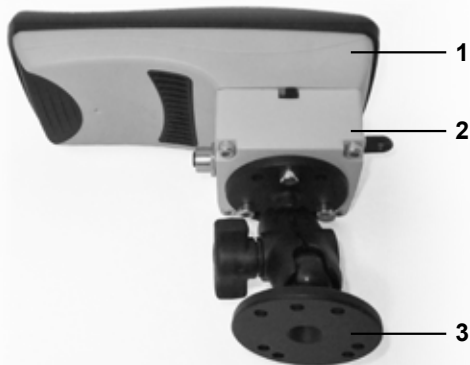
Optional spraybar kit



ELECTRICAL COMPONENTS

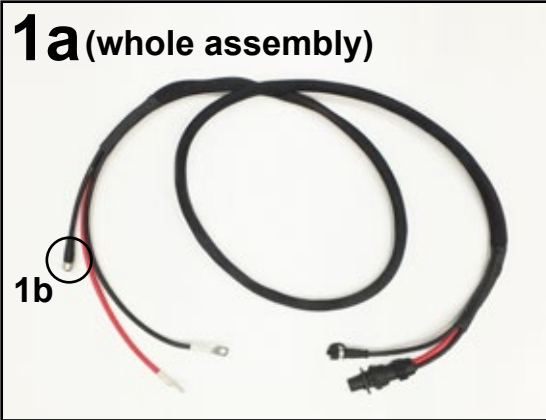
<i>Part no.</i>	<i>Description</i>
H21694	Vehicle side harness assembly
H22120	Extension harness 5m (optional)
H23205	Extension harness 2m (optional)
H21913	Controller Assembly
H25054	Spreader side harness, 550
H25055	Spreader side harness, 850 & 1100
H22758	Spreader side harness to vehicle side harness, 550 & 850 & 1100 (battery + data cable)
H22096	Spreader module
H23206	GPS antenna kit
H26257	Optional passive GPS antenna
H22756	Vehicle side 8-pin harness
H22761	Spreader side 8-pin harness (out in front)
H23084	Work light split adapter cable (optional)

CONTROLLER ASSEMBLY - H21913

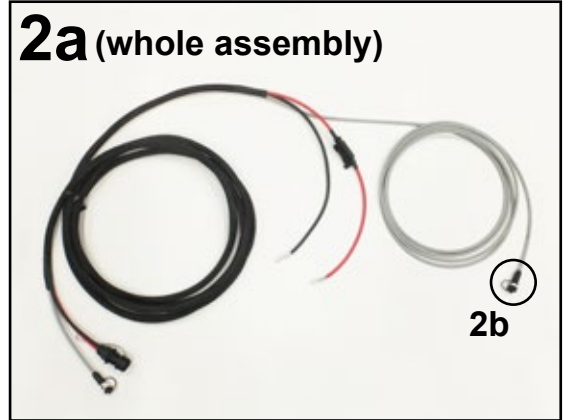


<i>Item</i>	<i>Part no.</i>	<i>Description</i>
1	H22739	Controller front
2	H22975	Controller circuit assembly
3	H22960	RAM mount

CABLES



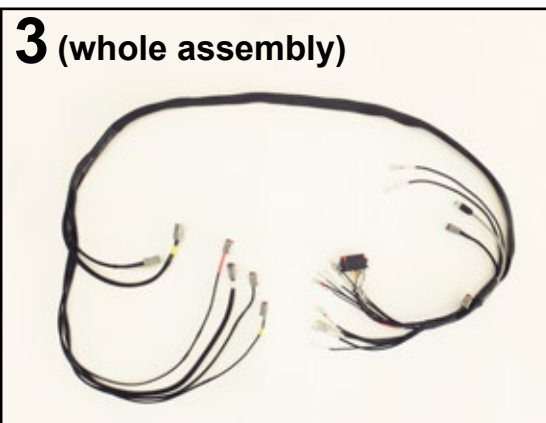
- 1a. H22758** Spreader side harness to vehicle side harness (battery + data cable)
1b. H22761 Spreader side 8-pin harness 2m



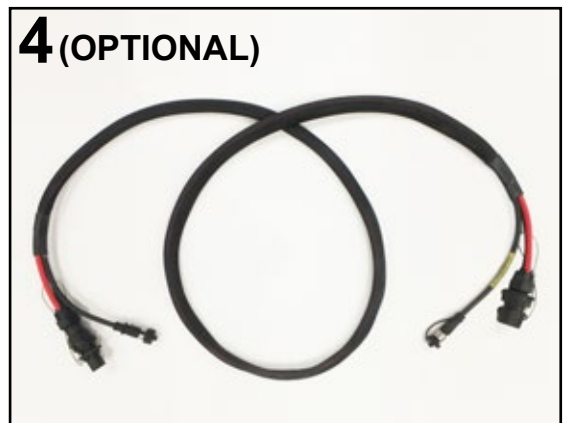
- 2a. H21694** Vehicle side harness assembly
2b. H22756 Vehicle side 8-pin harness

HEAVY DUTY HARNESS (OPTIONAL)

- H30374** Vehicle side harness, Heavy Duty
H30375 Spreader side harness, Heavy Duty



- 3. H25054** Spreader side harness, 550 & 750
H25055 Spreader side harness, 850 & 1100

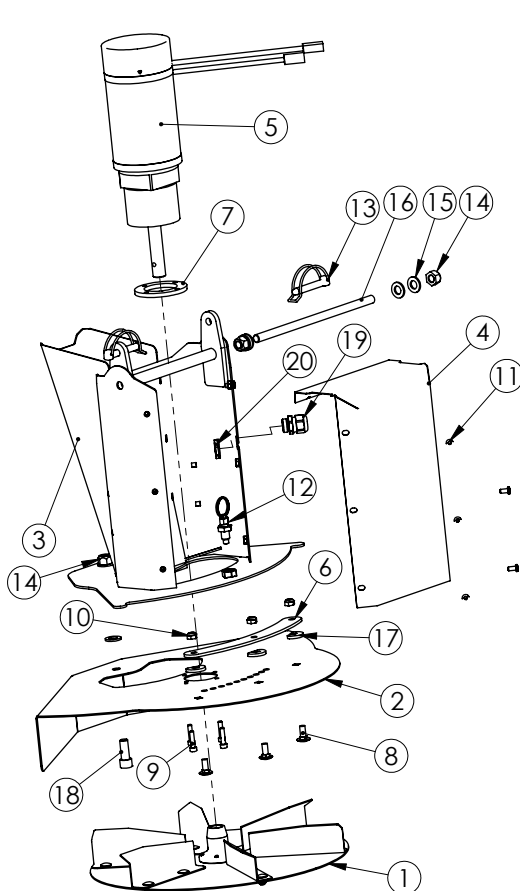


- 4. H23205** Optional extension harness, 2m
H22120 Optional extension harness, 5m

See page 12-16 for list of cable connectors.

CHUTE ASSEMBLY

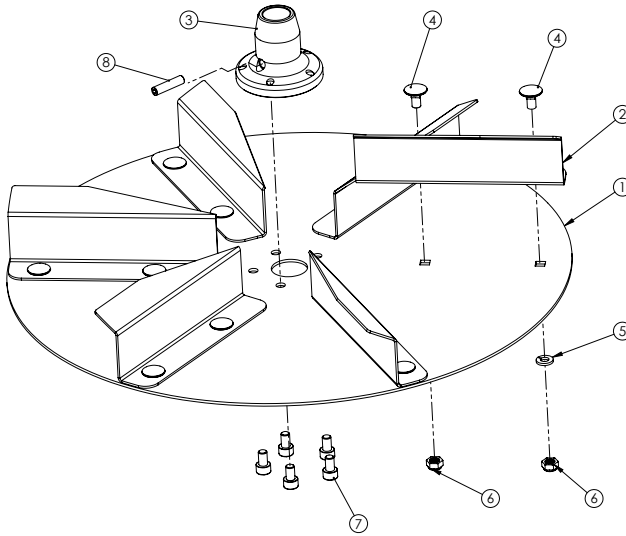
Item	Description	Qty	Part no		
			Short	Medium (+ 15 cm)	Long (+ 25 cm)
	Chute assembly	1	H24418	H25110	H24465
1	Spinner assembly	1	H23081		
2	Spinner cover	1	H22519		
3	Chute	1	H22523	H25111	H24466
4	Cover	1	H22522	H25115	H24469
5	Motor gearbox assembly	1	H24419		
6	Bracket	1	H22521		
7	Gearbox plastic spacer	1	H28523		
8	Lockbolt M8x20 A4 ISO 8677	3	HF10935		
9	Bolt M6x25 DIN 912 A4	4	HF10440		
10	Nylock M8 A4	3	HF10513		
11	Hexagon socket head bolt		HF19122 (6 pcs / 8 pcs / 8 pcs)		
12	Index plunger	1	H22644		
13	Pipe linch pin 10x60	2	H23210		
14	Nyloc DIN 985 M12 A4	3	HF10504		
15	Washer DIN 125 M12 A4	6	HF10480		
16	Thread bar M12	1	H25841		
17	Washer	3	H25140		
18	DIN 912 M12x30 A4	1	HF10390		
19	Cable gland M20x1,5	1	H21901		
20	Cable gland nut M20	1	H25842		



SHORT chute - H24418
MEDIUM chute - H25110
LONG chute - H24465

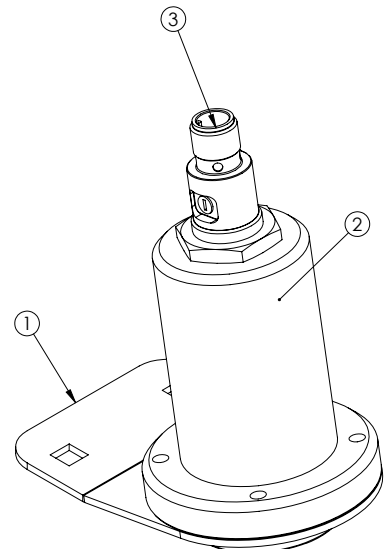
SPINNER ASSEMBLY - H23081

Item	Qty	Part no.	Description
1	1	H23082	Spinner plate 390 x 390 x 2
2	6	H23083	Wing plate
3	1	H21756	Bush
4	12	HF19113	Lockbolt M6x12 A4
5	12	HF10501	Washer M6 A4 DIN 127
6	12	HF10512	LOCK NUT M6 A4 DIN985
7	5	HF10436	In Hex Bolt M6x10 DIN 4762
8	1	HF19114	Socket set screw M6x25 A2 ISO4026



END OF MATERIAL SENSOR KIT, OPTIONAL - H27706

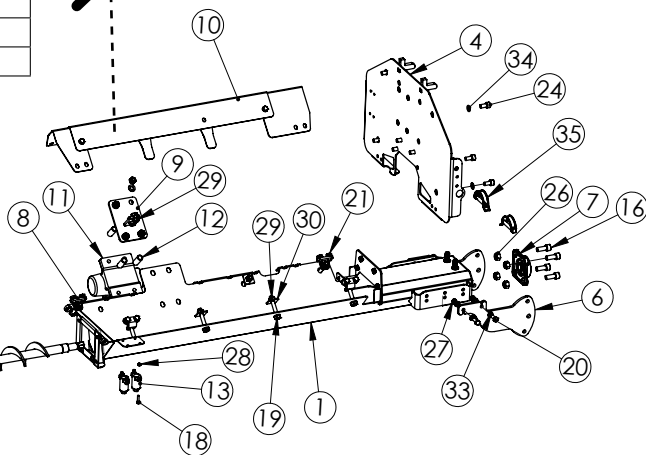
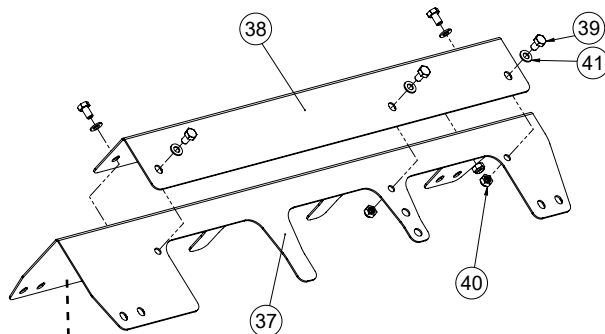
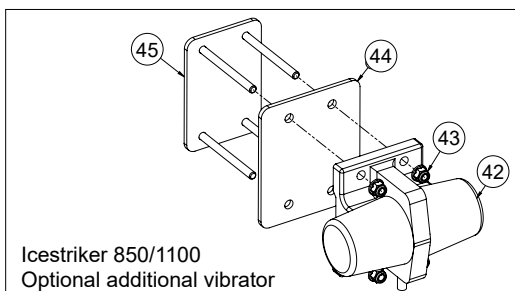
Item	Qty	Part no.	Description
1	1	H28019	Sensor bracket
2	1	H28020	Sensor cover
3	1	H28017	EOM sensor
ns	1	H30237	EOM sensor cable



AUGER DRIVE ASSEMBLY - H25630

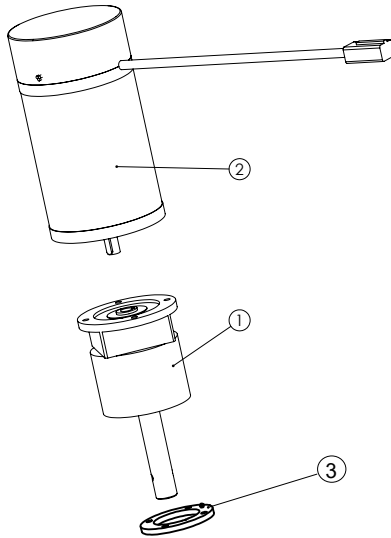
Item	Qty	Part no.	Description
1	1	H25102	Bottom chute
2	1	H27275	Old type Gearbox seal kit V3.0
		H27575	New type Gearbox seal kit V3.0
3	1	H28599	Auger Motor gearbox assembly
4	1	H24896	Back plate
5	1	H22513	Screw
6	2	H24895	Chute bracket
7	1	H23127	Flange bearing unit stainless
8	4	H21786	Bracket
9	1	H21820	Bracket
10	1	H22529	Invert V Kit adjustable
11	1	H22218	Vibrator
12	4	H22080	Bush
13	2	H22910	Terminal block M8
14	1	H22081	Retaining ring
15	1	H22082	Parallel key
16	4	HF10390	DIN 912 M12x30 A4
17	2	HF10672	Hex Bolt M10x20
18	4	HF10429	M5x20 DIN 4762
19	7	HF10124	Hex Bolt M10x65
20	4	HF10744	Hex Bolt M8x25
21	8	HF10742	Hex Bolt M8x16
22	4	HF10936	Lockbolt M8x25 A4 ISO 8677
23	4	HF10743	Hex Bolt M8x20
24	8	HF19226	DIN912 A4 M10x20
25	4	HF10386	Hexagon socket head bolt
26	4	HF10504	Nyloc DIN 985 M12 A4
27	12	HF10513	Nylock M8 A4
28	4	HF10511	Lock nut
29	13	HF10503	Lock nut M10
30	3	HF19117	DIN 436 M10 A4
31	8	HF10502	DIN 127B M8 A4
32	21	HF10479	Washer
33	16	HF10492	DIN 125 M8 A4
34	8	HF10493	Lock washer
35	2	H23210	Pipe linch pin 10x60
36	1	H25645	Gearbox flange

Item	Qty	Part no.	Description
37	1	H22530	Inverted V
38	1	H22531	Plate
39	5	HF19348	Bolt M8x14 DIN933 A4
40	5	HF10513	Nylock M8 A4
41	5	HF10492	DIN 125 M8 A4
42	1	H22218	Vibrator (optional)
43	4	HF19405	Flange nyloc A4 M8 (optional)
44	1	H22944	Plate (optional)
45	1	H28855	Vibrator bracket (optional)



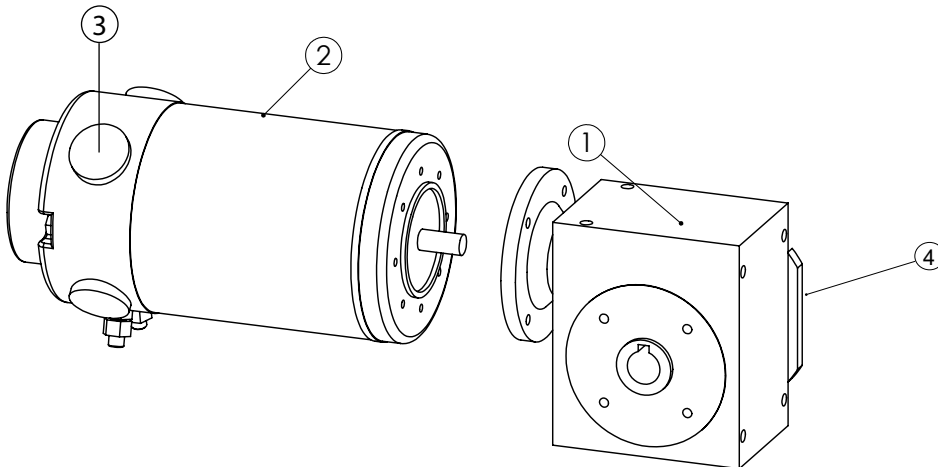
SPINNER MOTOR GEARBOX ASSEMBLY - H24419

Item	Qty	Part no.	Description
1	1	H22732	Gearbox
2	1	H22216	Electrical motor
3	1	H28523	Gearbox plastic spacer



AUGER MOTOR GEARBOX ASSEMBLY - H28599

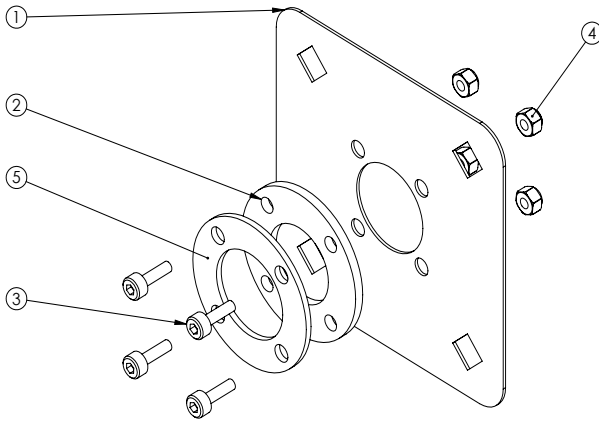
Item	Qty	Part no.	Description
1	1	H25649	Gearbox for Plus spreaders
2	1	H24794	Motor Assembly
3	4	H26588	Brush for electrical motor
4	1	H25645	Gearbox flange



GEARBOX SEAL KIT V3.0 - H27275, H27575

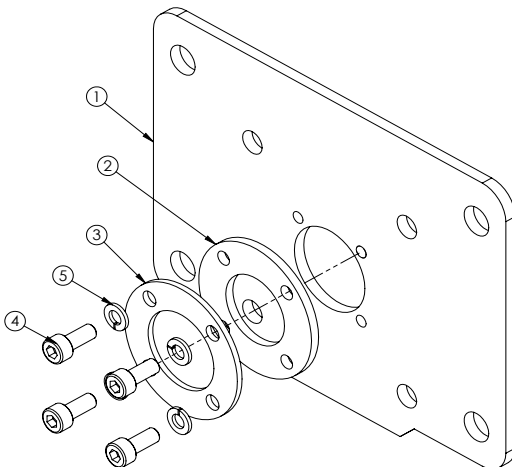
Old type H27275

Item	Qty	Part no.	Description
1	1	H27274	Plate
2	1	H27052	Polyurethane seal
3	1	HF10418	DIN912 A4 M4x12
4	4	HF10510	Lock nut M4
5	4	H27051	Seal Plate



New type H27575

Item	Qty	Part no.	Description
1	1	H25107	Plate
2	1	H27052	Polyurethane seal
3	1	H27051	Seal Plate
4	4	HF10427	M5x12 DIN 4762 A4
5	4	HF10500	DIN 127A4 M5



TARP COVER ASSEMBLY

 MODEL 550
H21768*

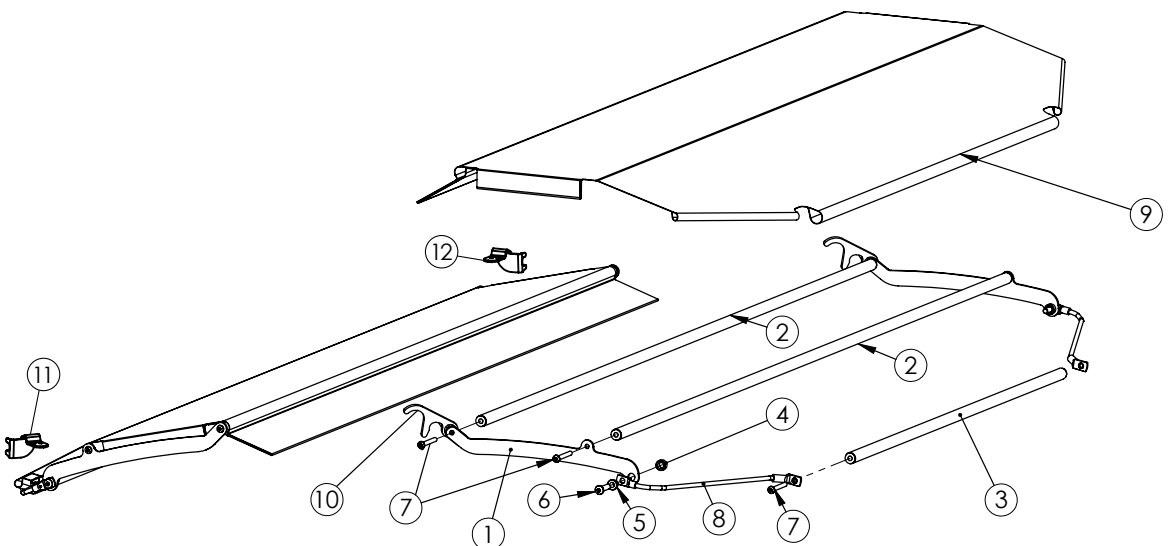
 MODEL 850
H22115*

 MODEL 1100
H26150*

Kit	Item	Qty	Part no.	Description
Model 550 & 850: Cover fixation kit - H22135	1	4	H21785	Bracket*
	ns	1	H22134	Bolt bag, Cover
	8	4	H21854	Cover fixation assembly
	10	2	H22488	Hook*
	11	2	H21787	Bracket
	12	2	H21788	Bracket
Model 1100 & 750: Cover fixation kit - H21809	1	4	H21785	Bracket*
	ns	1	H22134	Bolt bag, Cover
	8	4	H21854	Cover fixation assembly
	10	2	H22488	Hook*
	ns	4	H24423	Bracket
	ns	16	HF19367	Lock bolt M6
	ns	16	HF10474	Lock nut M6
Bolt bag H22134	4	4	H21774	Washer
	5	4	H21773	Bush
	6	4	HF11010	Hexagon socket head bolt M10
	7	12	HF19118	Hexagon socket head bolt M8
	ns	4	HF10745	Hexagon socket head bolt M8
	ns	4	HF10502	Lock washer M8
	Model 550 & 750: Cover and pipes-kit - H26125	2	4	H22089
3		2	H22088	Pipe assembly, 550 & 750
9		2	H22500	Cover, 550 & 750*
Model 850 & 1100: Cover and pipes-kit - H26126	2	4	H22117	Pipe assembly, 850 & 1100
	3	2	H22116	Pipe assembly, 850 & 1100
	9	2	H22501	Cover, 850 & 1100 *

* updated parts since 2014

ns = not shown

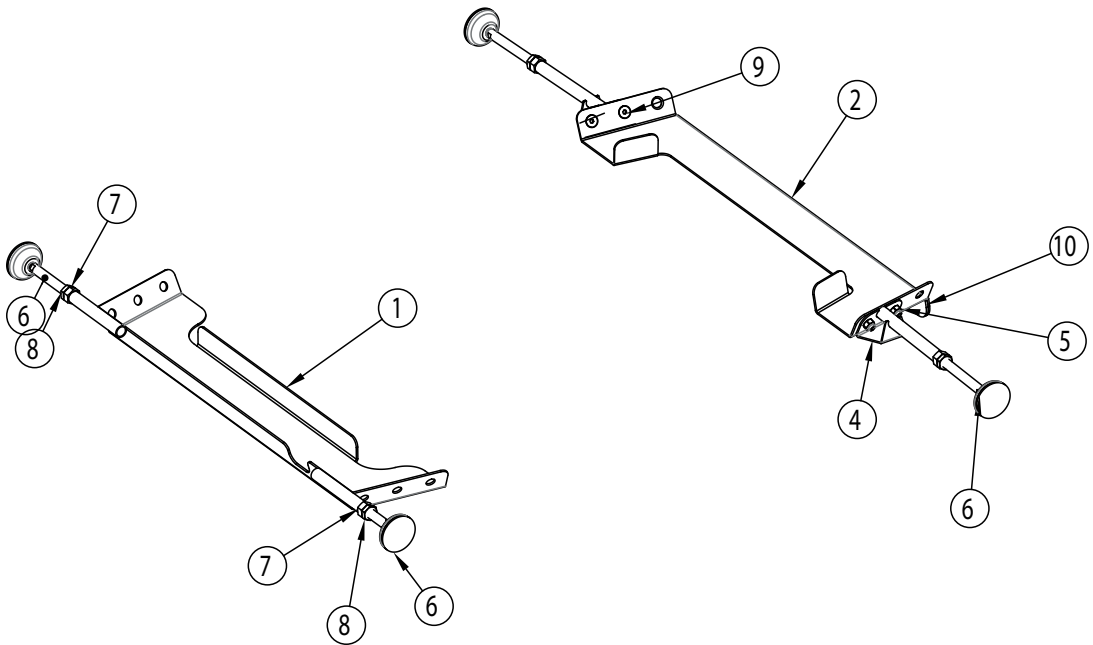


SLIDE STOP KIT (OPTIONAL)

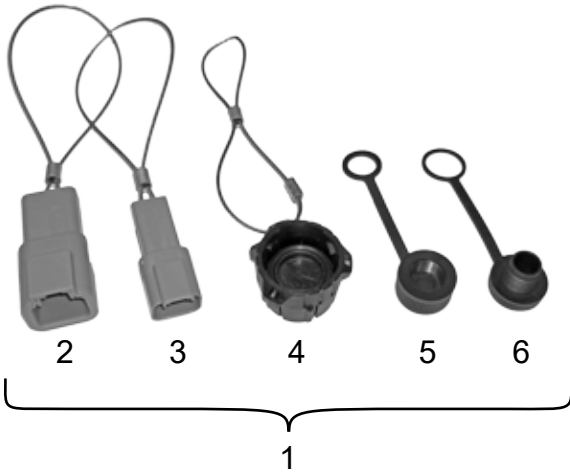
 MODEL 550-750
H25036

 MODEL 850-1100
H26012

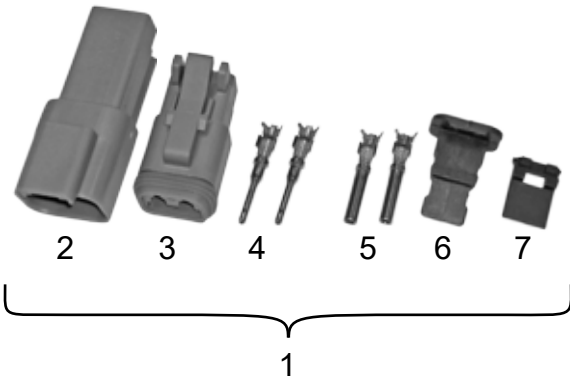
Item	Qty	Part no.	Description
1	1	H26013	Bracket
2	1	H26015	Bracket
3	1	H26016	Bracket
4	1	H26019	Bracket
5	4	HF10503	Lock nut M10
6	4	H26021	Levelling feet
7	4	HF10470	Hex nut DIN 934 A4 M16
8	4	HF19388	Low nut DIN 936 A4 M16
9	4	HF10876	DIN 7991 A4 M10x20
10	1	H27243	Polyurethane plate



CONNECTORS

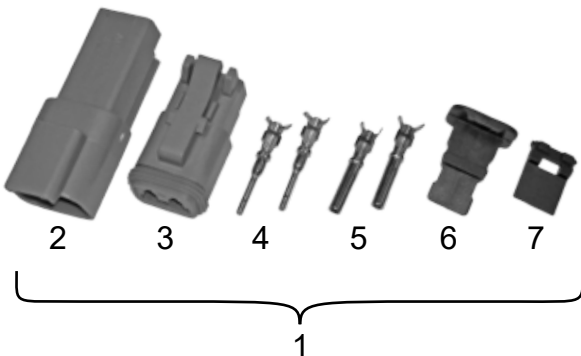


Item	Qty	Part no.	Description
1	1	H23361	Endcap kit
2	1	H22305	Protective cap ATP
3	1	H22304	Protective cap AT
4	1	H23360	Protective sealing cap
5	1	H22168	Sealing Cap female
6	1	H22169	Sealing Cap male



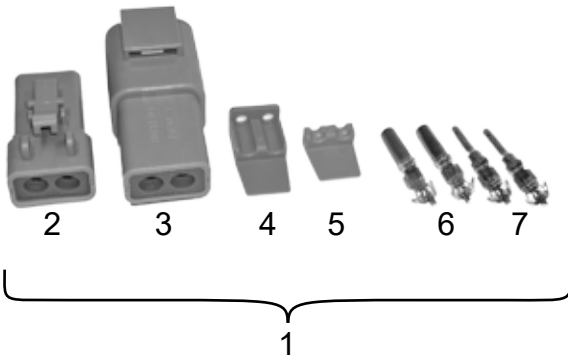
Item	Qty	Part no.	Description
1	1	H23366	DT connector kit 1mm²
2	1	H21879	Receptacle, 2-Way
3	1	H21877	Plug, 2-way
4	2*	H21883	Male Contact - Pin 0,823-1,31mm²
5	2*	H21881	Female Contact - Socket 0,823-1,31mm²
6	1	H21878	Wedgelock Plug, 2-Way
7	1	H21880	Wedgelock Recep., 2-Way

*minimum order quantity: 20 pcs



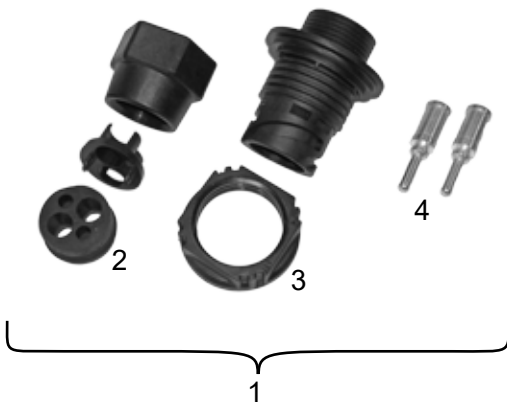
Item	Qty	Part no.	Description
1	1	H23367	DT connector kit 2,5mm²
2	1	H21879	Receptacle, 2-Way
3	1	H21877	Plug, 2-way
4	2*	H21882	Male Contact - Pin 1,31-2,08mm²
5	2*	H21876	Female Contact - Socket 1,31-2,08mm²
6	1	H21878	Wedgelock Plug, 2-Way
7	1	H21880	Wedgelock Recep., 2-Way

*minimum order quantity: 20 pcs



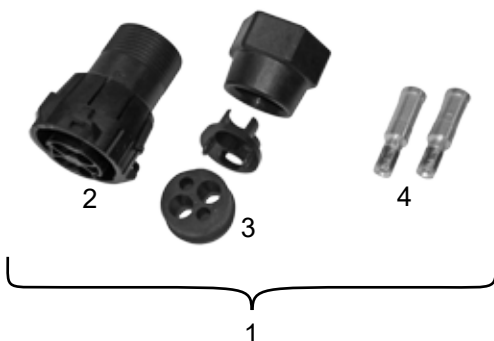
Item	Qty	Part no.	Description
1	1	H23368	DTP Connector kit
2	1	H21888	Plug, 2-way
3	1	H21886	Receptacle, 2-Way
4	1	H21889	Wedglock Plug, 2-Way
5	1	H21887	Wedglock Recep., 2-Way
6	2*	H21884	Female Contact - Socket 2,08-3,31mm ²
7	2*	H21885	Male Contact - Pin 2,08-3,31mm ²

*minimum order quantity: 20 pcs



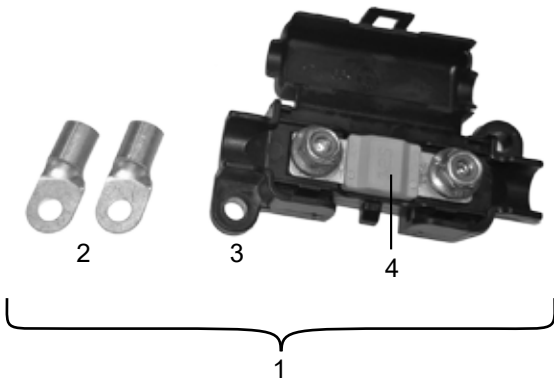
Item	Qty	Part no.	Description
1	1	H23364	Battery cable connector kit - Vehicle side
2	1	H21923	Sealing set
3	1	H21847	Connector housing
4	2*	H21850	Crimp pin

*minimum order quantity: 20 pcs

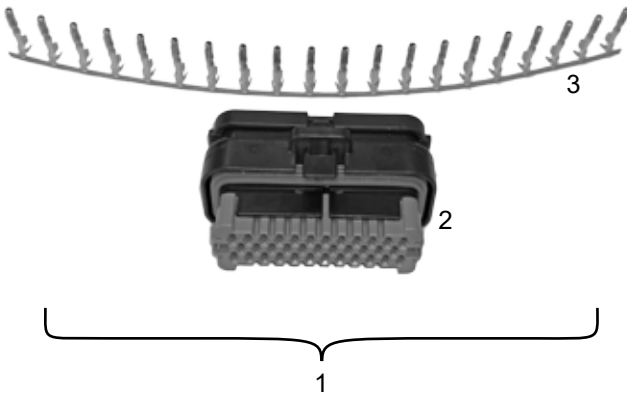


Item	Qty	Part no.	Description
1	1	H23365	Battery cable connector kit - Spreader side
2	1	H21853	Connector housing
3	1	H21923	Sealing set
4	2*	H21851	Crimp pin

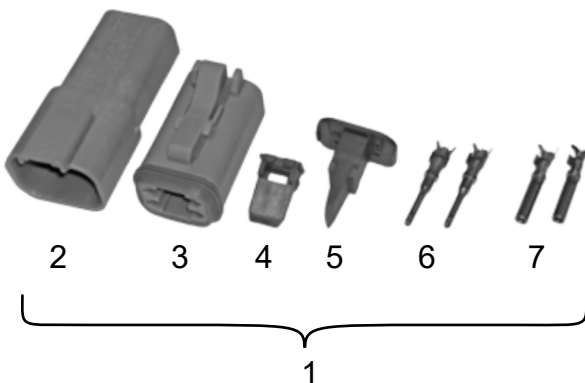
*minimum order quantity: 20 pcs



Item	Qty	Part no.	Description
1	1	H23371	Fuse holder accessories
2	2	H21933	Connector 5-16mm ²
3	1	H21868	Fuse holder midval
4	1	H21869	Fuse Midval 80A



Item	Qty	Part no.	Description
1	1	H23369	IO module connector kit
2	1	H21955	Connector Housing AMPSEAL 35 pin
3	20	H21956	Female Contact - Socket



Item	Qty	Part no.	Description
1	1	H23370	Rear lights connector kit
2	1	H21910	Receptacle, 4-Way
3	1	H21908	Plug, 4-Way
4	1	H21911	Wedgeloock Recep., 4-Way
5	1	H21909	Wedgeloock Plug, 4-Way
6	2*	H21883	Male Contact - Pin 0,823-1,31mm ²
7	2*	H21881	Female Contact - Socket 0,823-1,31mm ²

*minimum order quantity: 20 pcs

1



Item	Qty	Part no.	Description
1	1	H23529	Dielectric grease, 50g

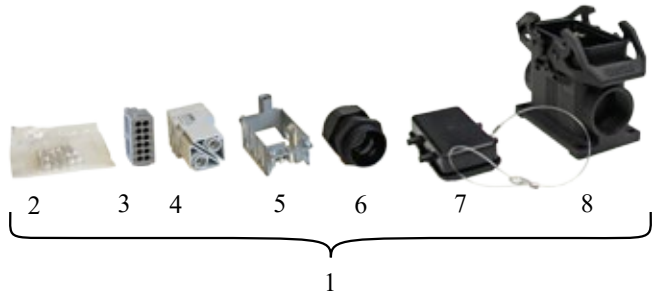
1



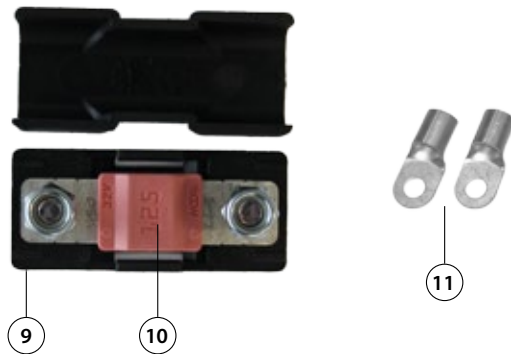
Item	Qty	Part no.	Description
1	2	H21935	Connector for auger, 8-4 mm ²

HEAVY DUTY CONNECTORS

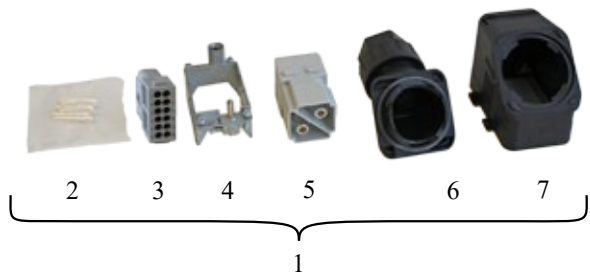
Item	Qty	Part no.	Description
1	1	H30151	Vehicle side harness connector
2	1	H30152	Terminal kit (8 pcs 0,5mm ²)
3	1	H30145	Insert module
4	1	H25796	Insert module
5	1	H25763	Carrier frame
6	1	H25764	Cable gland
7	1	H25803	Cover
8	1	H25765	Housing



9	1	H26129	Fuse holder midval small
10	1	H22885	Fuse midval 125 A, pink
11	2	H24273	Connector 5mm 25 mm ²



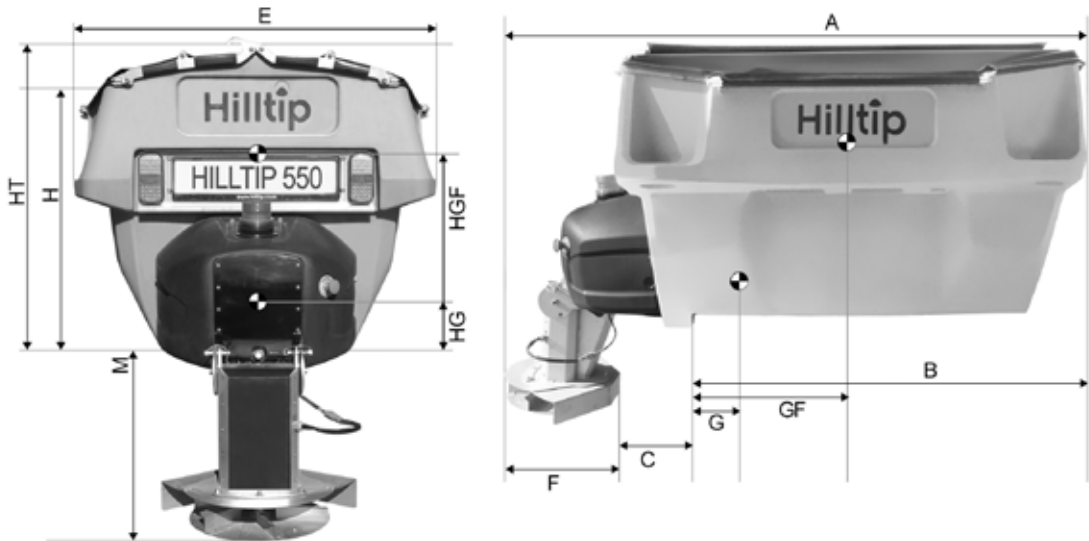
Item	Qty	Part no.	Description
1	1	H30150	Spreader side harness connector
2	1	H30153	Terminal kit (5 pcs 1,0 mm ²)
3	1	H26625	Insert module
4	1	H25759	Carrier frame
5	1	H25800	Insert module
6	1	H25760	Cable gland
7	1	H25828	Housing



Item	Qty	Part no.	Description
1	1	H30313	Spreader side harness connector cover



TECHNICAL SPECIFICATIONS



Key	Description (mm)	550	750	850	1100
A	Total length	2105	2105	2605	2605
B	Maximum external hopper length	1300	1300	1780	1780
C	Free distance between hopper and chute	345	345	345	345
E	Maximum external width (with tarp mounted)	1250	1250	1250	1250
F	Total length of spreading group (disc + chute)	460	460	460	460
G	Distance from the centre of gravity to the rear part of the hopper (empty)	228	228	375	375
GF	Distance from the centre of gravity to the rear part of the hopper (full)	570	570	710	710
H	Height of the hopper from the loading surface of the carrying vehicle	775	925	775	925
HG	Height of the centre of gravity from the loading surface of the carrying vehicle (empty)	64	119	245	300
HGF	Height of the centre of gravity from the loading surface of the carrying vehicle (full)	500	600	600	700
HT	Total height of the hopper from the loading surface of the carrying vehicle	925	1075	925	1075
M	Distance between spreading disc and loading surface of the carrying vehicle	Short chute = 450 mm Medium chute = 600 mm Long chute = 700 mm			

Description	550	750	850	1100
Hopper volume, struck (<i>H</i> level)	500 l	700 l	710 l	1000 l
Hopper volume, rounded (<i>HT</i> level)	630 l	780 l	880 l	1100 l
Liquid tank capacity	330 l	330 l	450 l	450 l
Empty spreader weight	145 kg	170 kg	190 kg	215 kg
Full loaded spreader solid material, <i>H</i> level	945 kg	1290 kg	1326 kg	1815 kg
Full loaded spreader solid material, <i>HT</i> level	1153 kg	1418 kg	1598 kg	1975 kg
Full loaded spreader solid material, <i>H</i> level, and liquid material full tank	1280 kg	1620 kg	1776 kg	2265 kg
Full loaded spreader solid material, <i>HT</i> level, and liquid material full tank	1483 kg	1748 kg	2048 kg	2425 kg

These numbers are based on the weight when using dry, coarse sand

Part	Specification	550	750	850	1100
Drive line	Auger, stainless steel	68mm	68 mm	68mm	68mm
	Auger motor with encoder, IP65	320W	320W	320W	320W
	Auger wormgear, IP65	YES	YES	YES	YES
	Spinner motor, IP65	250W	250W	250W	250W
	Spinner planet gear, IP65	YES	YES	YES	YES
	Spinner	390mm	390mm	390mm	390mm
	Salt liquid pump, (Option) IP65	30-35l/min	30-35l/min	30-35l/min	30-35l/min
Electrical	Controlbox 12V	Canbus	Canbus	Canbus	Canbus
	Controller	Yes	Yes	Yes	Yes
	Main fuse	80A	80A	80A	80A
	Amperage Draw Regular use	30-45A	30-45A	30-45A	30-45A
	Vibrator, 90 kg force	15A	15A	15A	15A
	Beacon light (option)	LED	LED	LED	LED
	Rear light w. licens plate kit (option)	2x30 LED	2x30 LED	2x30 LED	2x30 LED
	Work light LED X 5 (Option)	5 x LED	5 x LED	5 x LED	5 x LED
Software	Programs for different materials	Yes	Yes	Yes	Yes
	USB Connection to controller	Yes	Yes	Yes	Yes
	GPS & Manual controller	Yes	Yes	Yes	Yes

Specifications are subject to change without notice. We do not take any responsibility in any direct or indirect damages or warranty cases concerning these values.



Oy HillTip Ab
Pukkisaarentie 6
68600 Pietarsaari
Finland

+358 50 5983 026
+358 50 3659 415

www.hilltip.com
info@hilltip.com