



our **power**, your **passion**

NIBBI MAK 16

(EN 709 - ÅRG. 2012 OG FREM)



Henrik A. Fog A/S

Lyngager 5-11

2605 Brøndby

Tel 43966611

Fax 43266624

reservedele@hafog.dk

www.hafog.dk

MAK 16 (EN 709) Rotary cultivator



Dokumenter

Injection hood

Clutch and gear case

Gears (Gearbox)

Axle, brakes and wheels

Internals controls

Handlebar rod and connections

Handlebar and controls

Tiller 69219013/69219008/69219012

Tiller only for Diesel engines 69219010/69219007

Special cutter bar 69229017/69229019/69229043

Middle fingers cutter bar 69229040/69229041/69229042

Quickfit

Oil bath movement L0101500

70 cm rotor with adjustable cowling and fixed connection 69219069

80 cm rotor with adjustable cowling and fixed connection 69219067

Illustration Injection hood

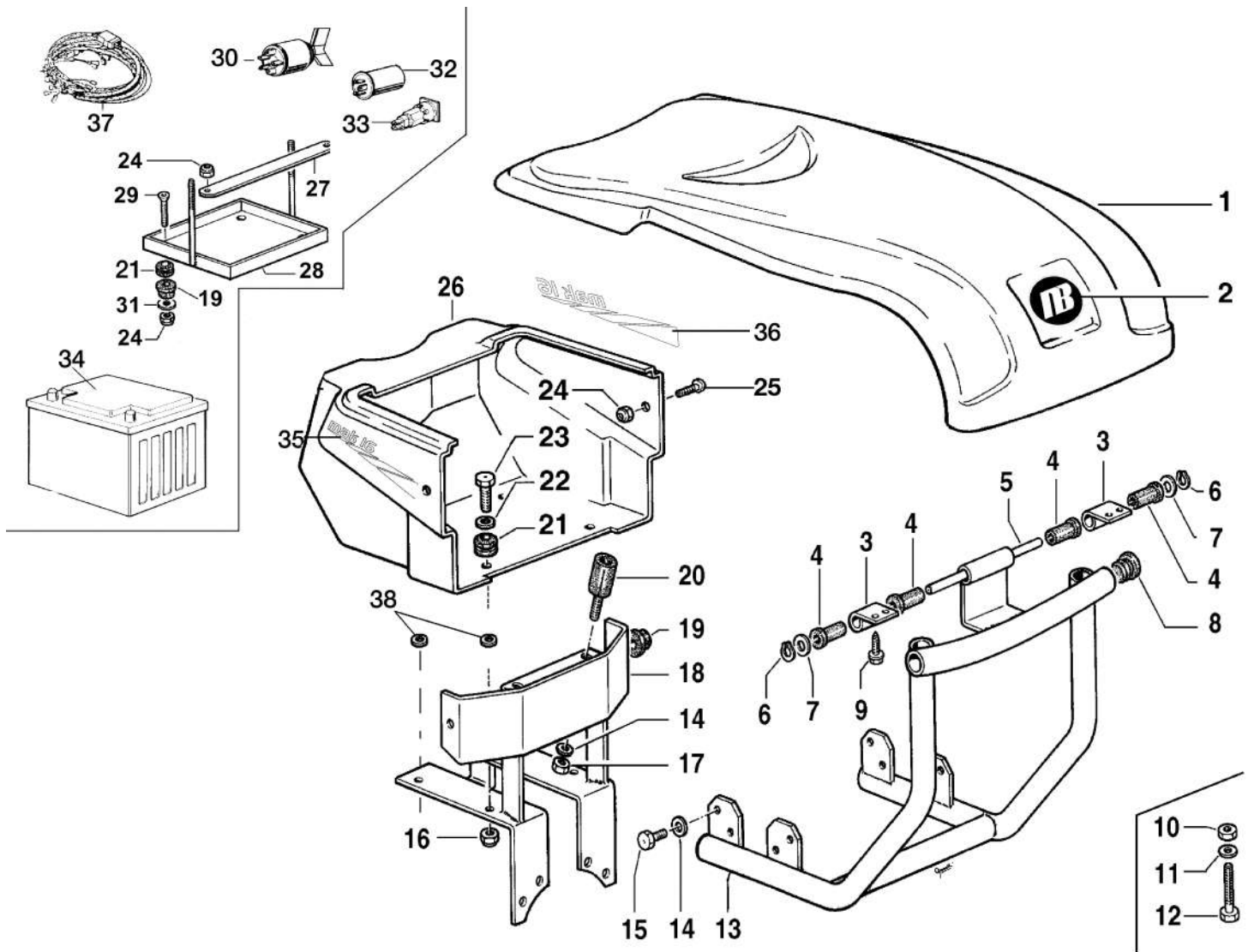


Illustration Injection hood

Ref.Nu	Qty	Part number	Description	Validity from	Validity till	Notes	Bulletin
1	1	68320022R	Hood			15LD440; 15LD440 AE;	
2	1	68320084R	Mark			Honda GX340; Rosso; Red Su richiesta; Upon request	
3	2	F1292105	Support				
4	4	YN0400700	Bushing				
5	1	F1292106	Pin				
6	2	YN0102900	Ring				
7	2	3916010R	Washer				
8	1	YN5267400	Cap				
9	4	YN6243654	Screw				
10	4	006000091R	Nut				
11	4	YN4376400	Washer				
12	4	YN6335900	Screw			15LD440 AE	
12	4	3806067R	Screw			15LD440; Honda GX340	
13	1	68320224	Support			Honda GX340; Grigio; Grey	
13	1	68320243	Support			15LD440; 15LD440 AE;	
14	6	YN4365400	Washer			Grigio; Grey	
15	1	3806063R	Screw			Honda GX340	
16	1	3914010R	Nut				
17	6	320000028R	Nut				
18	1	68330038BR	Support			15LD440; 15LD440 AE;	
19	6	F0752170	Buffer				
20	2	YF0752159	Silent block				
21	4	YN0400530	Grommet				
22	1	3916008R	Washer				
23	4	3806067R	Screw				
24	6	3914006R	Nut				
25	2	N6218600	Screw				
26	1	68320026R	Hood			15LD440; Honda GX340;	
26	1	68320026R	Hood			15LD440 AE; Avviamento elettrico; Electric starter;	
27	1	F1292601	Main board			15LD440 AE; Avviamento Rosso; Red	
28	1	68320240BR	Battery casing			15LD440 AE; Avviamento elettrico; Electric starter;	
29	4	N6233000	Screw			Grigio; Grey	
30	1	YN2540020	Switch			15LD440 AE	
31	4	N4362200	Washer			15LD440 AE	
32	1	N2552370	Plug			15LD440 AE	
33	1	68340075	Warning light kit			15LD440 AE	
34	1	68330338	Battery			15LD440 AE	
35	1	68330024	Mark			Su richiesta; Upon request;	
36	1	68330023	Mark			Su richiesta; Upon request;	
37	1	68330139	Electric starter			SX: LEFT 15LD440; 15LD440 AE	
38	2	YN4371100	Washer				

Illustration Clutch and gear case

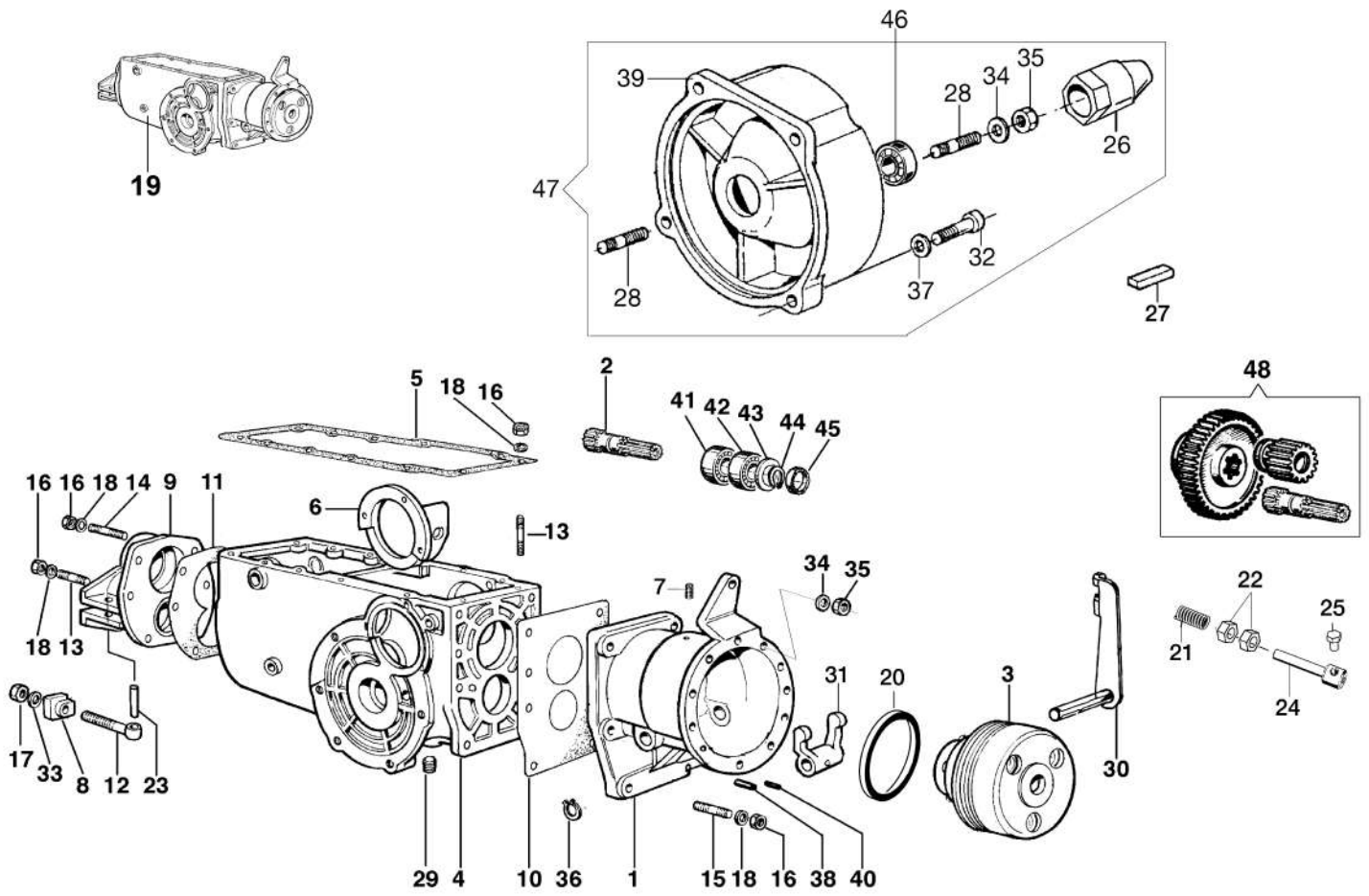


Illustration Clutch and gear case

Ref.Nu	Qty	Part number	Description	Validity from	Validity till	Notes	Bulletin
1	1	68330103	Drum				
2	1	YF1270813	Shaft		01/2011	Sostituito da: kit	
3	1	68320118R	Multiple disk clutch			15LD440; 15LD440 AE	
3	1	68320124R	Multiple disk clutch			15LD440; 15LD440 AE Honda GX140 (multidisc Honda GX140)	
4	1	K4306367	Speed-change gear box				
5	1	K4300320	Gasket				
6	1	K4300850C	Support				
7	1	YN6203600	Screw				
8	1	YK4302510	Support				
9	1	YK1100420T	Support				
10	1	K1100670	Gasket				
11	1	YK1100700	Gasket				
12	1	YK1100980	Screw				
13	1	N3814800	Stud				
14	1	K8233011	Stud				
15	1	YN3815300	Stud				
16	1	YN1458000	Nut				
17	1	N1469200	Nut				
18	1	YN4365400	Washer				
19	1	68332020	Unit (Gear)				
19	1	68332061	Unit (Gear)			FOG	
20	1	68330102AR	Ring				
21	1	68320160R	Spring				
22	2	034000013R	Nut				
23	1	K8503042R	Pin				
24	1	68320148	Retainer (Wire)				
25	1	302000024	Screw				
26	1	YF1290007B	Clutch cone			Solo per motori Diesel; Only	
27	1	N0648090	Key			Solo per motori benzina; Only for gasoline engine	
28	1	YN3815300	Stud				
29	1	K8536004	Cap				
30	1	68330087	Lever				
31	1	YF1271602	Clip				
32	1	YN6309790	Screw			15LD440; 15LD400; Honda	
33	1	YN4387700	Washer				
34	1	3916008R	Washer			engine	
35	1	320000028R	Nut				
36	1	3024014R	Seeger				
37	1	YN4376400	Washer			Solo per motori benzina; Only for gasoline engine	
38	1	YN5117300	Pin				
39	1	68320117AR	Flange			Solo per motori benzina; Only for gasoline engine	
40	1	N5104000	Pin				
41	1	N1259200	Bearing				
42	1	N1259400	Bearing				

Illustration Clutch and gear case

Ref.Nu	Qty	Part number	Description	Validity from	Validity till	Notes	Bulletin
43	1	N5002650	Thickness				
44	1	YN0112700	Seeger				
45	1	N0205850	Ring				
46	1	N1289300R	Bearing				
47	1	68322048R	Spacer unit				
48	1	68330100R	Gears set	02/2011		Per frizione multidisco ; For multidisc clutch	

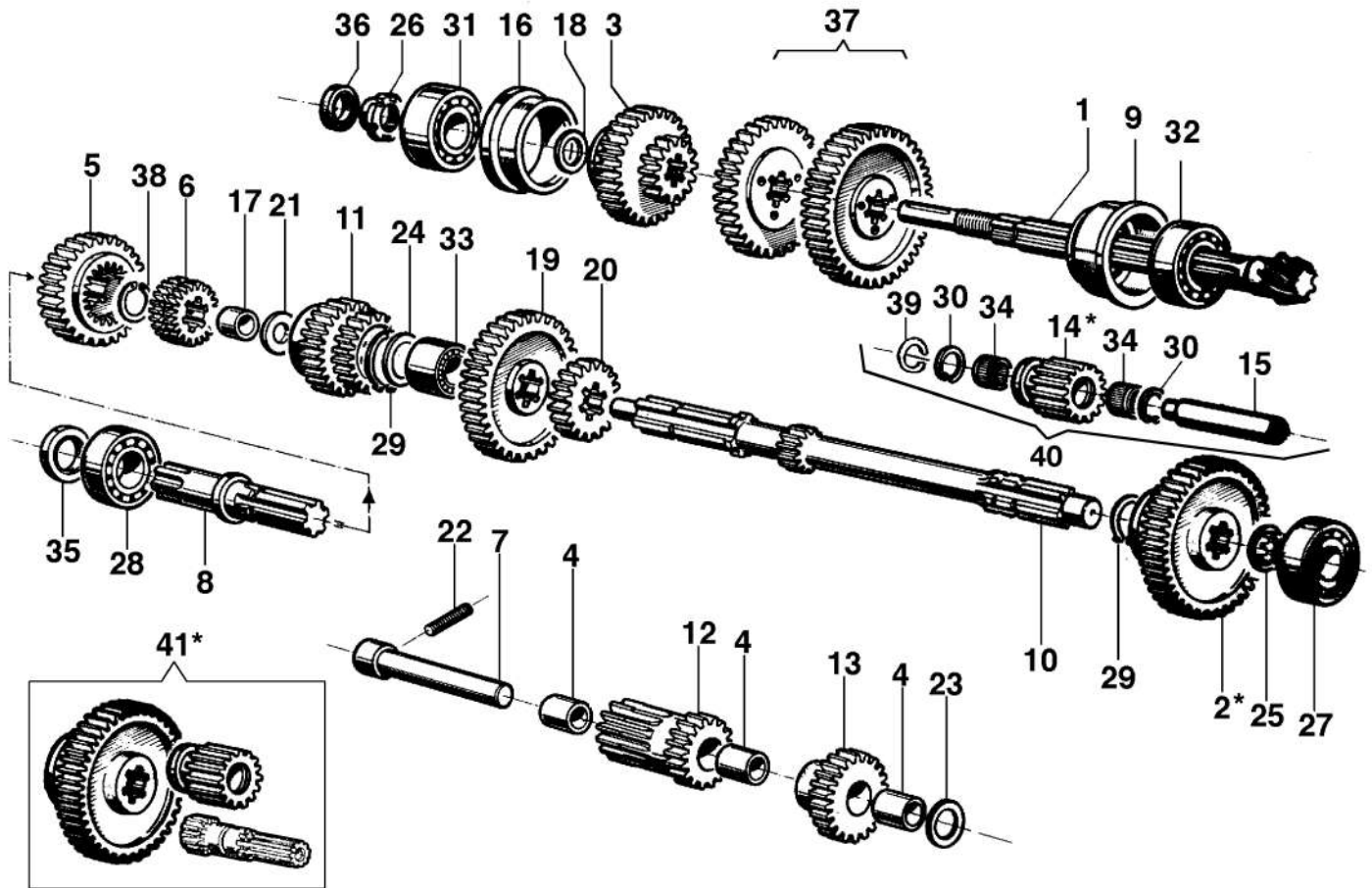


Illustration Gears (Gearbox)

Ref.Nu	Qty	Part number	Description	Validity from	Validity till	Notes	Bulletin
1	1	-	Not available for this product			Coppia conica K4303540; Bevel gear K4303540	
2	1	YK4300890	Gear		01/2011	Sostituito da: kit	
3	1	YK4301230	Gear				
4	1	K4301260	Bushing			(frizione multidisco);	
5	1	K4301280R	Idler gear				
6	1	YK4301290	Gear			68330100R (multidisc	
7	1	K4302050R	Shaft				
8	1	YK4301330	Shaft				
9	1	K1100310	Bushing				
10	1	K4301720	Shaft				
11	1	YK4301710	Gear				
12	1	K4301570R	Gear				
13	1	K4301580R	Gear				
14	1	F1360802	Idler gear		01/2011		
14	1	68330096R	Idler gear	02/2011			
15	1	YK4306760	Pin				
16	1	K4301340	Bushing				
17	1	K1100390	Bushing				
18	1	K1101020	Ring				
19	1	K1200060	Gear				
20	1	K1200070	Gear				
20	1	K1700170	Gear			FOG	
21	1	K1200180	Washer				
22	1	N6271400	Screw				
23	1	K4303760	Spacer				
24	1	K8491033	Thickness				
25	1	K8491024	Thickness				
26	1	K7544001	Ring nut				
27	1	N1264600	Bearing				
28	1	YN1270701	Bearing				
29	1	YN0118500	Seeger				
30	2	YK7009001	Ring				
31	1	N1265800	Bearing				
32	1	N1270810	Bearing				
33	1	K7252013	Bearing				
34	2	028200023R	Roller cage				
35	1	N0209200	Ring				
36	1	K7032068	Ring				
37	1	K1200040	Gear				
37	1	K1700180	Gear			FOG	
38	1	K7011001R	Ring				
39	1	N0109900	Ring				
40	1	R0000158	Roller cage				
41	1	68330099R	Gears set	02/2011		Per frizione monodisco ; For single-disc clutch	

Illustration Gears (Gearbox)

Ref.Nu	Qty	Part number	Description	Validity from	Validity till	Notes	Bulletin
41	1	68330100R	Gears set	02/2011		Per frizione multidisco ; For multidisc clutch	

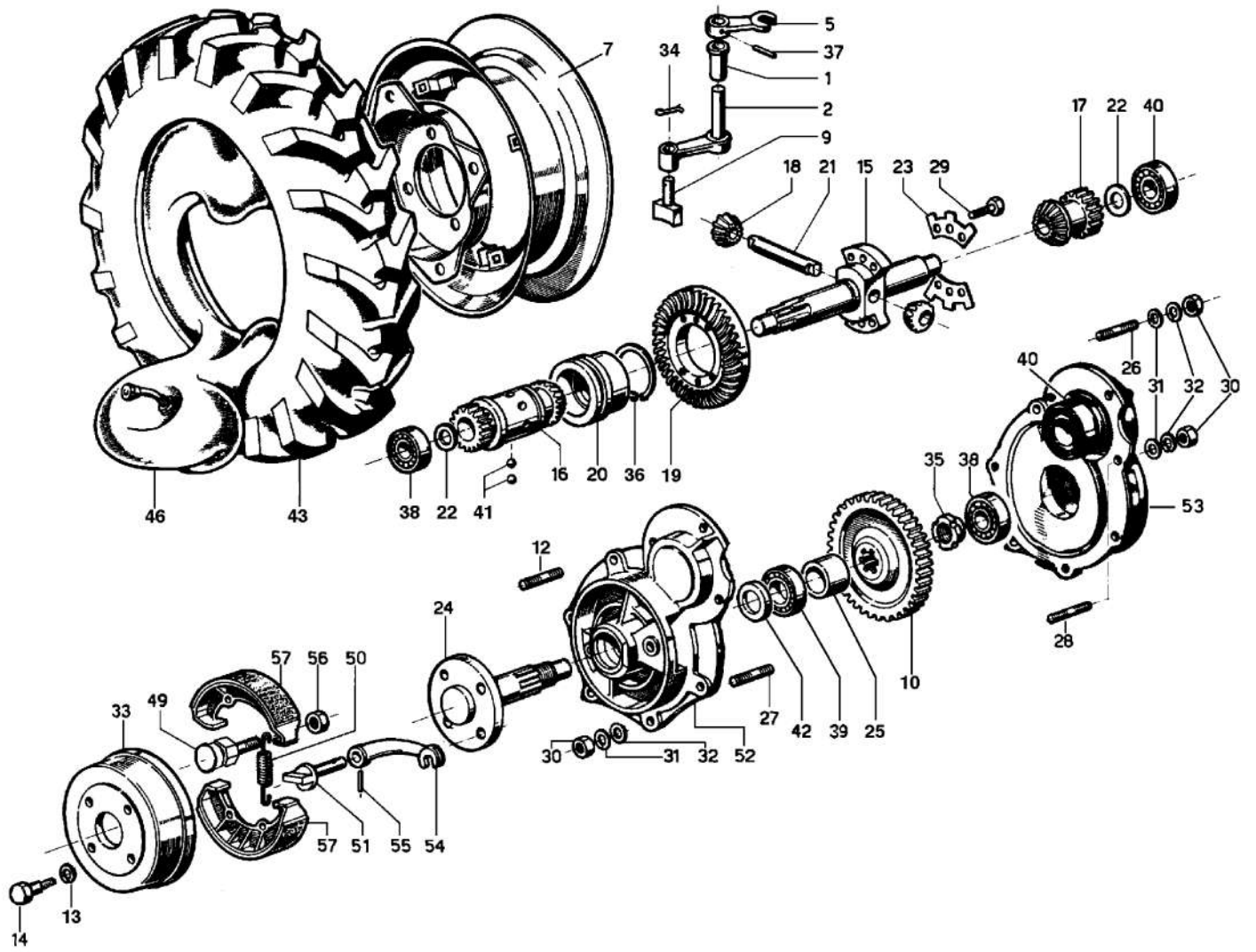


Illustration Axle, brakes and wheels

Ref.Nu	Qty	Part number	Description	Validity from	Validity till	Notes	Bulletin
1	1	YK4800320	Tube				
2	1	F1361616	Rod				
5	1	K4800360	Lever				
7	1	69200099R	Rim			3.00-10"; Grigio; Grey	
7	1	69200100	Rim			5.00-12"; Grigio; Grey	
7	1	69200101R	Rim			6.5/80-12"	
9	1	K4301640	Control				
10	1	K1700700R	Gear				
12	1	N3814800	Stud				
13	1	YN4390600	Washer				
14	1	N6368550	Screw				
15	1	K1200710	Shaft				
16	1	K1200720	Gear				
17	1	K1200730	Gear				
18	1	K1200740R	Gear				
19	1	K4303540	Rim			Coppia conica K4303540;	
20	1	K1200760	Bushing				
21	1	K1200770	Piston pin				
22	1	K8491018	Washer				
23	1	K1200800	Plate				
24	1	F1360200	Axle shaft				
25	1	K1700710	Spacer				
26	1	K8231003	Stud				
27	1	K8233011	Stud				
28	1	YN3815300	Stud				
29	1	N6262100	Screw				
30	1	YN1458000	Nut				
31	1	3819013R	Grower				
32	1	3916008R	Washer				
33	1	YN2382700	Cable reel				
34	1	K7231001	Cotter pin				
35	1	N2102100	Ring nut				
36	1	N0135300	Seeger				
37	1	YN5115000	Elastic pin				
38	1	N1259400	Bearing				
39	1	N1274500	Bearing				
40	1	K7244004	Bearing				
41	1	YN4743200	Ball				
42	1	K7033004	Ring				
43	1	YN4853500A	Tire			5.00-10"	
43	1	N4853800	Tire			5.00-12"	
43	1	N4860600A	Tire			6.5/80-12"	
46	1	YN4882500	Inner tube			5.00-10"	
46	1	N4883200	Inner tube			5.00-12"	

Illustration Axle, brakes and wheels

Ref.Nu	Qty	Part number	Description	Validity from	Validity till	Notes	Bulletin
46	1	N4888200	Inner tube			6.5/80-12"	
49	1	YF1360201A	Pin				
50	1	YN3105100	Spring				
51	1	F1360202	Pin			DX; RIGHT	
51	1	F1360203	Pin			SX; LEFT	
52	1	YF1360205	Cover			DX; RIGHT	
53	1	F1360206R	Cover			SX; LEFT	
54	1	K0104860	Lever				
55	1	YN5117300	Pin				
56	1	N1474600	Nut				
57	1	YN2362700	Brake shoe				

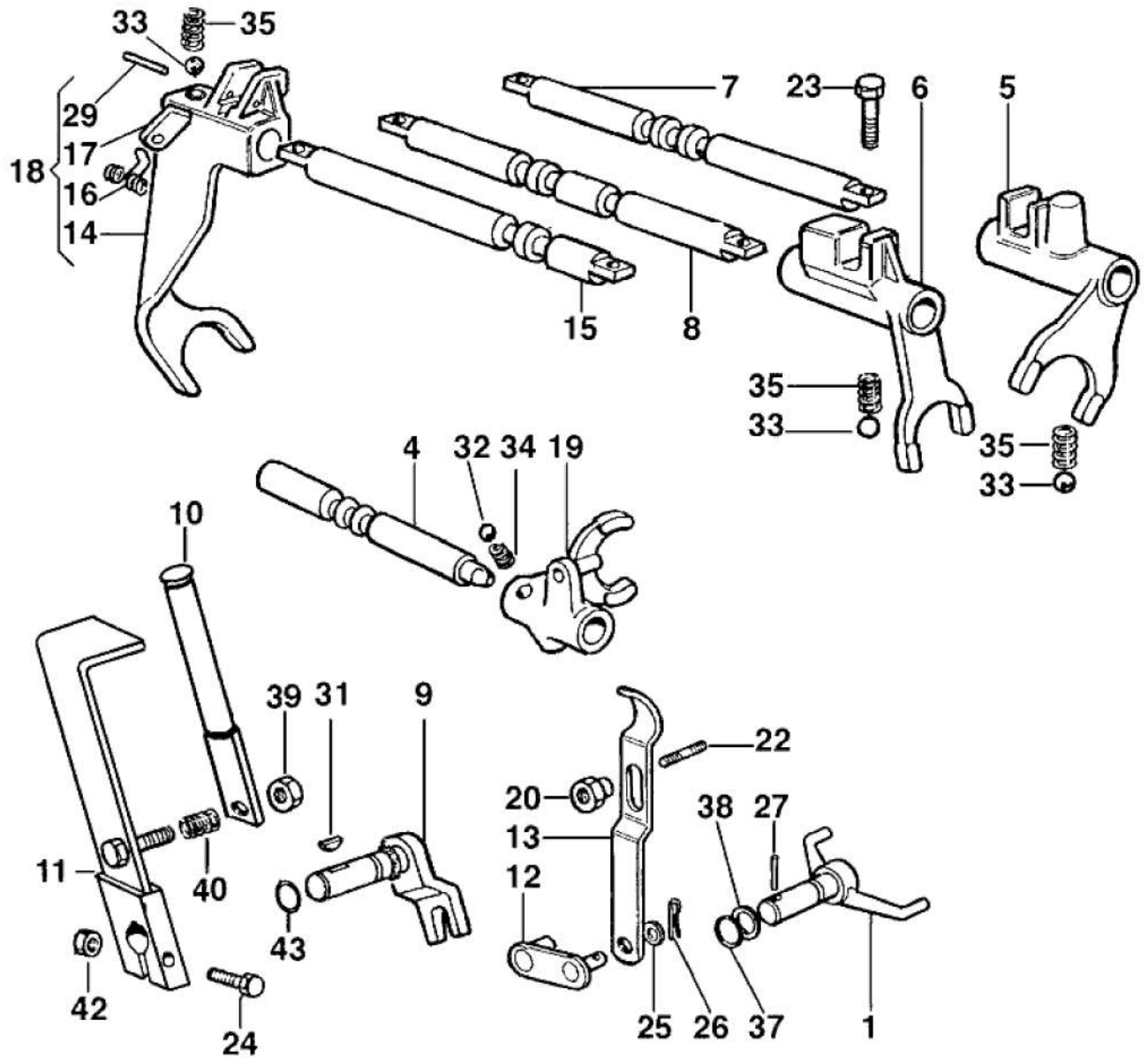


Illustration Internals controls

Ref.Nu	Qty	Part number	Description	Validity from	Validity till	Notes	Bulletin
1	1	YK4300940	Fork				
4	1	K4301300	Pin				
5	1	K4301360R	Yoke				
6	1	K4301370R	Yoke				
7	1	K4301390	Pin				
8	1	K4301400	Pin				
9	1	YK4301460	Fork				
10	1	F1361620	Lever				
11	1	F1361619A	Control				
12	1	YK4301540A	Lever				
13	1	K4301550	Lever extension				
14	1	K4301590R	Yoke				
15	1	K4301600	Pin				
16	1	K4301650R	Spring				
17	1	YK4301660	Insert				
18	1	K4301670	Clip				
19	1	K1200250R	Yoke				
20	1	K1200360R	Nut				
22	1	K8233001	Stud				
23	1	N6254500R	Screw				
24	1	YN6234500	Screw				
25	1	N4369300	Washer				
26	1	K7231001	Cotter pin				
27	1	YN5113800	Pin				
29	1	N5115600	Elastic pin				
31	1	N0643000	Key				
32	1	YN4742100	Ball				
33	1	YN4743200	Ball				
34	1	K7903002	Spring				
35	1	YK7903003	Spring				
37	1	N0305600	O-ring				
38	1	YN5001700	Washer				
40	1	YN3111500	Spring				
42	1	3914008R	Nut				
43	1	YN0305800	Gasket				

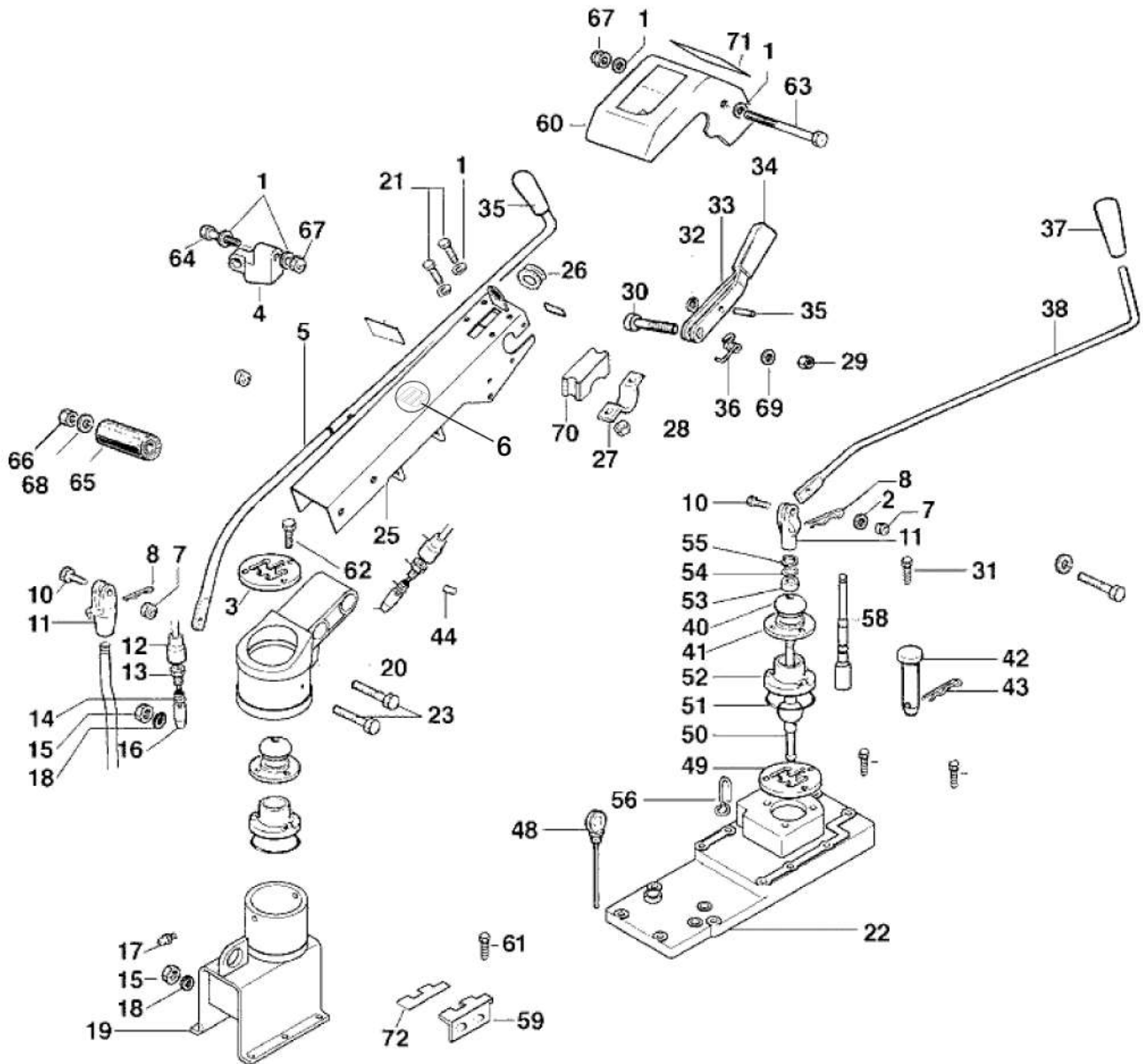


Illustration Handlebar rod and connections

Ref.Nu	Qty	Part number	Description	Validity from	Validity till	Notes	Bulletin
1	1	3916008R	Washer				
2	1	YK8401029	Washer				
3	1	68330089	Indicator				
3	1	68330106	Indicator			FOG	
4	1	YF1255009D	Support				
5	1	YF1361622	Control rod				
6	1	68330020	Mark			Su richiesta; Upon request	
7	1	3914008R	Nut				
8	1	YN5113800	Pin				
10	1	3906016R	Screw				
11	1	K0501070	Bushing				
12	1	YK3503090	Guard				
13	1	YK3502660	Cap				
14	1	YN3109400	Spring				
15	1	3914010R	Nut				
16	1	F1361610	Shutter				
17	1	58040180R	Nipple				
18	1	3916010R	Washer				
19	1	68330175FR	Column support			Grigio; Grey	
20	1	68330043FR	Grip-end handlebar rod			Rosso; Red	
21	1	YN6289250	Screw				
22	1	F1360800	Cover				
23	1	N6411100	Screw				
25	1	68330045CR	Handlebar rod				
26	1	YK2203010	Grommet				
27	1	YF1151601	Clamp				
28	1	YN1458800	Nut				
29	1	3914014R	Nut				
30	1	N6363500	Screw				
31	1	3806067R	Screw				
32	1	YN0102900	Ring				
33	1	F1361614	Lever				
34	1	YN2840480	Knob				
35	1	YN3753600	Knob				
36	1	YF1291634B	Spring				
37	1	K8211007	Grip				
38	1	F1361612R	Control rod				
40	1	K2201420	Cap				
41	1	K4301440R	Guard cap				
42	1	N0803500AR	Piston pin				
43	1	YN5150800	Cotter pin				
44		-	Not available for this product				
48	1	K4304320A	Rod				
49	1	F1360801	Selector switch (Gear-shift lever)				

Illustration Handlebar rod and connections

Ref.Nu	Qty	Part number	Description	Validity from	Validity till	Notes	Bulletin
50	1	F1361601	Lever				
51	1	K7035028	O-ring				
52	1	K1200260	Cover				
53	1	K0105000R	Valve				
54	1	YK8401029	Washer				
55	1	3024015R	Seeger				
56	1	F1271626	Slide				
58	1	F1361604	Lever				
59	1	F1361621	Selector switch				
60	1	68330160	Upper cover			Grigio; Grey	
61	1	YN6247400	Screw				
62	1	3901062R	Screw				
63	1	N6307900	Screw				
64	1	3806076R	Screw				
65	1	YN4924250	Silent block				
66	1	YN1470500	Nut				
67	1	3914010R	Nut				
68	1	N4384360	Washer				
69	1	3916010R	Washer				
70	1	YF1181646	Support				
71	1	68330101	Mark			Su richiesta; Upon request	
71	1	68330107	Mark			Su richiesta; Upon request;	
72	1	F1361626	Mark			Su richiesta; Upon request	

Illustration Handlebar and controls

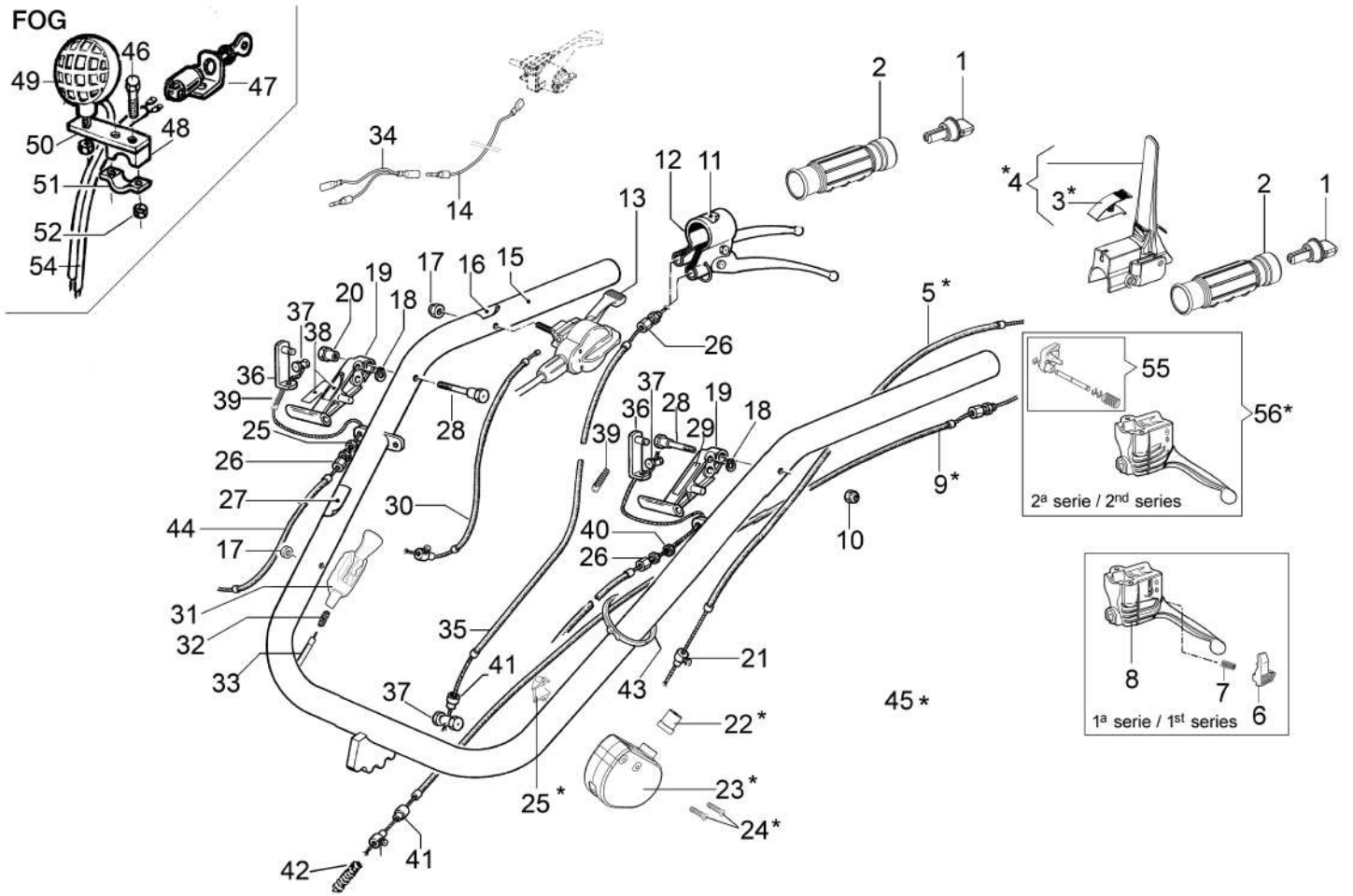


Illustration Handlebar and controls

Ref.Nu	Qty	Part number	Description	Validity from	Validity till	Notes	Bulletin
1	2	68320127R	Extension				
2	2	68320126R	Knob				
3	1	68240053R	Hook + Pin				
4	1	68310061R	Complete lever				
5	1	68330287R	Rope				
6	1	68310073R	Button				
7	1	68310074R	Spring				
8	1	68310063	Lever				
9	1	68330254R	Rope				
10	1	3914010R	Nut				
11	1	YN5380665	Mark (Brake)			Su richiesta; Upon request	
12	1	68910192R	Control lever (Brake)	01/01/2011			
12	1	YN2806200	Handle	31/12/2010			
13	1	3044011R	Set (Cable Motor-stop - Fuel control - Button)	SN B034100001		Per motori benzina GX340 (ver.T1,H); For gasoline engine GX340 (ver.T1,H)	BT12-008-03/14
13	1	3044019R	Set (Cable Motor-stop - Fuel control - Button)	SN B034100001		Per motori benzina GX340 (ver.T2); For gasoline engine GX340 (ver.T2)	BT12-007-03/14
13	1	YN2803660	Fuel control			Per motori benzina; For	
14	1	68330113	Cable		SN B034099999	Per motori benzina; For gasoline engine	BT12-007-03/14 BT12-008-03/14
15	1	68330110BR	Complete handle				
16	1	YN5380805	Mark (Accelerator)			Su richiesta; Upon request	
17	1	034000013R	Nut				
18	1	N1734000	Ring				
19	1	F1291614R	Lever				
20	1	F1291617R	Bushing				
21	3	YN5901000	Clamp				
22	1	68310066	Bushing				
23	1	68320187	Device Quick start				
24	2	68310068	Pin				
25	1	3911008R	Nut				
26	1	YN5801000	Adjuster assy				
27	1	YN5380870	Mark (Instruction)			Su richiesta; Upon request	
28	1	F1291615R	Pin				
29	1	YF1291649	Mark			Su richiesta; Upon request	
30	1	68330187R	Transmission (Bowden cable)				
31	1	68320132	Lever (Stop)			Per motori diesel; For Diesel	
32	1	68320134	Spring			Per motori diesel; For Diesel	
33	1	68320138	Transmission			Per motori diesel; For Diesel	
34	1	68320169	Cable		SN B034099999	Per motori Honda GX340 versioni T2; For Honda GX340 engine versions T2	BT12-007-03/14
35	1	68330186R	Transmission				
36	1	F1291619	Bracket				
37	1	YN5901500	Clamp				
38	1	F1271615	Mark			Su richiesta; Upon request	
39	1	YF1370387	Guard				

Illustration Handlebar and controls

Ref.Nu	Qty	Part number	Description	Validity from	Validity till	Notes	Bulletin
40	1	3911008R	Nut				
41	1	YN5852100A	Clamp				
42	1	N3105800	Spring				
43	1	K7451002	Band				
44	1	68330188R	Transmission				
45	1	68330108AR	Lever group				
46	1	3806077	Screw				
47	1	K4806800	Bracket				
48	1	YF1181646	Support				
49	1	68330144R	Headlamp				
50	1	68330003	Main board				
51	1	YF1151601	Clamp				
52	1	320000028R	Nut				
54	1	68330144R	Headlamp				
55	1	68320198R	Button set				
56	1	68320199R	Complete lever				

69219013 - 69219008 - 69219012

NB:Il cofano, a differenza della fresa, è rappresentato visto dal lato operatore

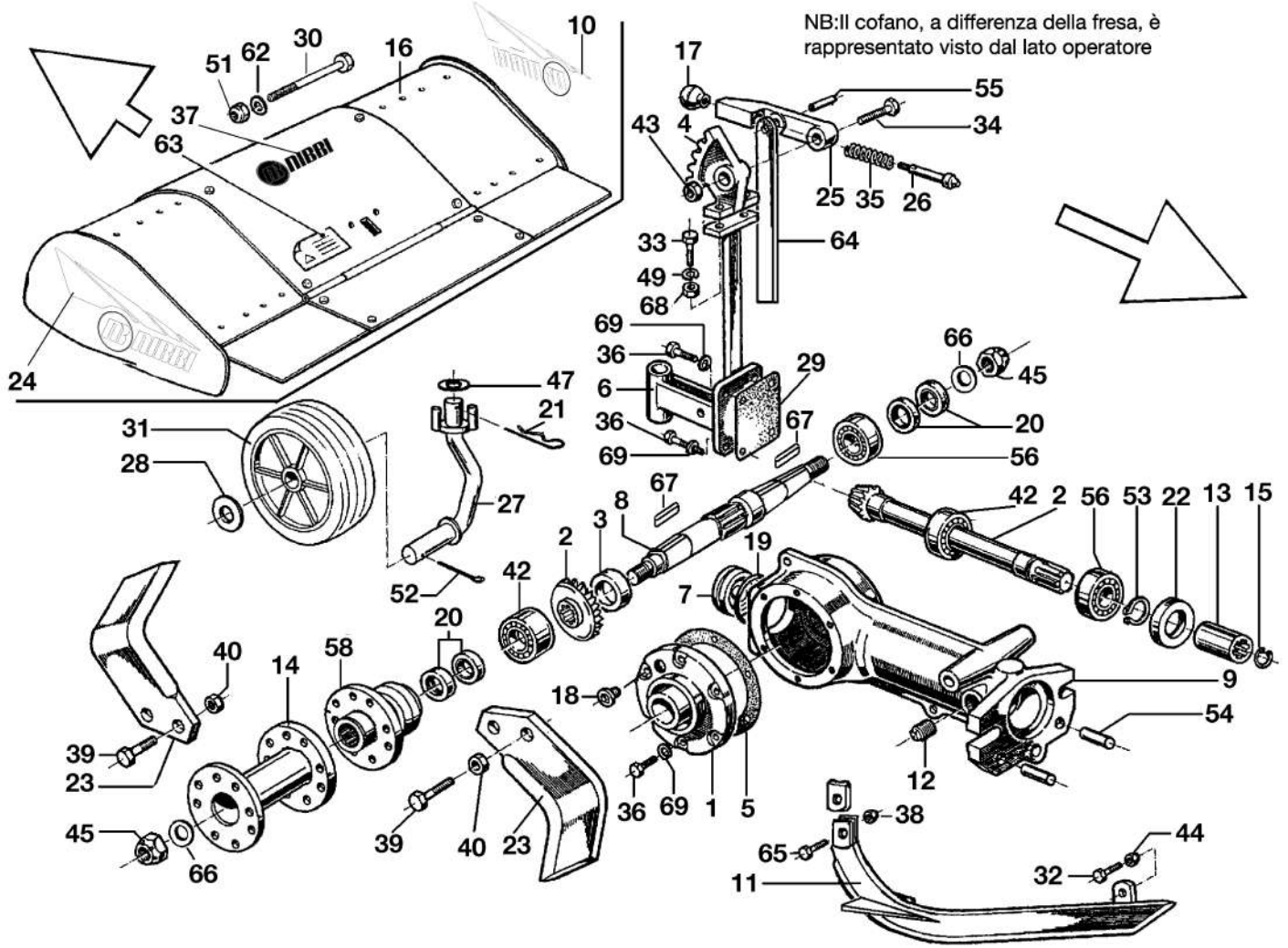


Illustration Tiller 69219013/69219008/69219012

Ref.Nu	Qty	Part number	Description	Validity from	Validity till	Notes	Bulletin
1	1	YK1101060N	Cover				
2	1	K4806930	Set bevel gear				
3	1	K4801310	Spacer				
4	1	K4302350B	Sector				
5	1	YK1101100	Gasket				
6	1	K4808008	Support (Wheel)				
7	1	YK4302520	Cap				
8	1	K4808060	Shaft				
9	1	K1101070P	Arm				
10	1	68330029	Mark			Su richiesta; Upon request;	
11	1	YF0015613	Cutter tool				
12	1	K8535002	Cap				
13	1	YK1101080	Joint				
14	1	69210272R	Spacer				
15	1	028200019	Ring				
16	1	PA001873	Hood			60÷40 cm; Rosso; Red	
16	1	PA001872	Hood			70÷60 cm; Rosso; Red	
16	1	PA001860	Hood			80÷60 cm; Rosso; Red	
17	1	YK8211001	Knob				
18	1	K8536002	Cap				
19	1	YK7035045	O-ring				
20	1	N0209200	Ring				
21	1	N1054500	Cotter pin				
22	1	YN0210045	Ring				
23	1	R0000138	Cutters kit			Per fresa 70 cm, kit composto da: F0015602, su richiesta - Upon request; DX: 10b2 + F0015603, SX:	
24	1	68330030	Mark				
25	1	K2203550BR	Lever				
26	1	K2203560R	Piston pin			composo da: F0015602, RIGHT, 10pcs + F0015603,	
27	1	K3501830R	Support				
28	1	3916020	Washer				
29	1	YK1101230	Gasket				
30	1	N6417235	Screw				
31	1	YK1102480	Support wheel				
32	1	3806067R	Screw				
33	1	YN6335900	Screw				
34	1	N6399710	Screw				
35	1	K7903026	Spring				
36	1	N6254500R	Screw				
37	1	68610007	Mark			Su richiesta; Upon request	
38	1	YN1458800	Nut				
39	1	N6262100	Screw				
39	1	N6274000	Screw				
40	1	YN1463500	Nut				
42	1	YN1270751	Bearing				

Illustration Tiller 69219013/69219008/69219012

Ref.Nu	Qty	Part number	Description	Validity from	Validity till	Notes	Bulletin
43	1	K7272009	Nut				
44	1	YN1458800	Nut				
45	1	N1482500R	Nut			DX; RIGHT	
45	1	N1482600	Nut			SX; LEFT	
47	1	3916020	Washer				
49	1	3819014R	Grower				
51	1	YN1470200	Nut				
52	1	YN1060200	Cotter pin				
53	1	YN0118500	Seeger				
54	1	K8504014	Pin				
55	1	K8503039R	Pin				
56	1	YN1270701	Bearing				
58	1	K4808050	Support				
62	1	3916012R	Washer				
63	1	F0015577	Mark (Danger)			Su richiesta; Upon request	
64	1	F0015612	Rod				
65	1	3933034AR	Screw				
66	1	N4418000	Washer				
67	1	YN0652200	Key				
68	1	N1464600R	Nut				
69	1	N4364350	Washer				

Fresa solo per motori Diesel 69219010 - 69219007

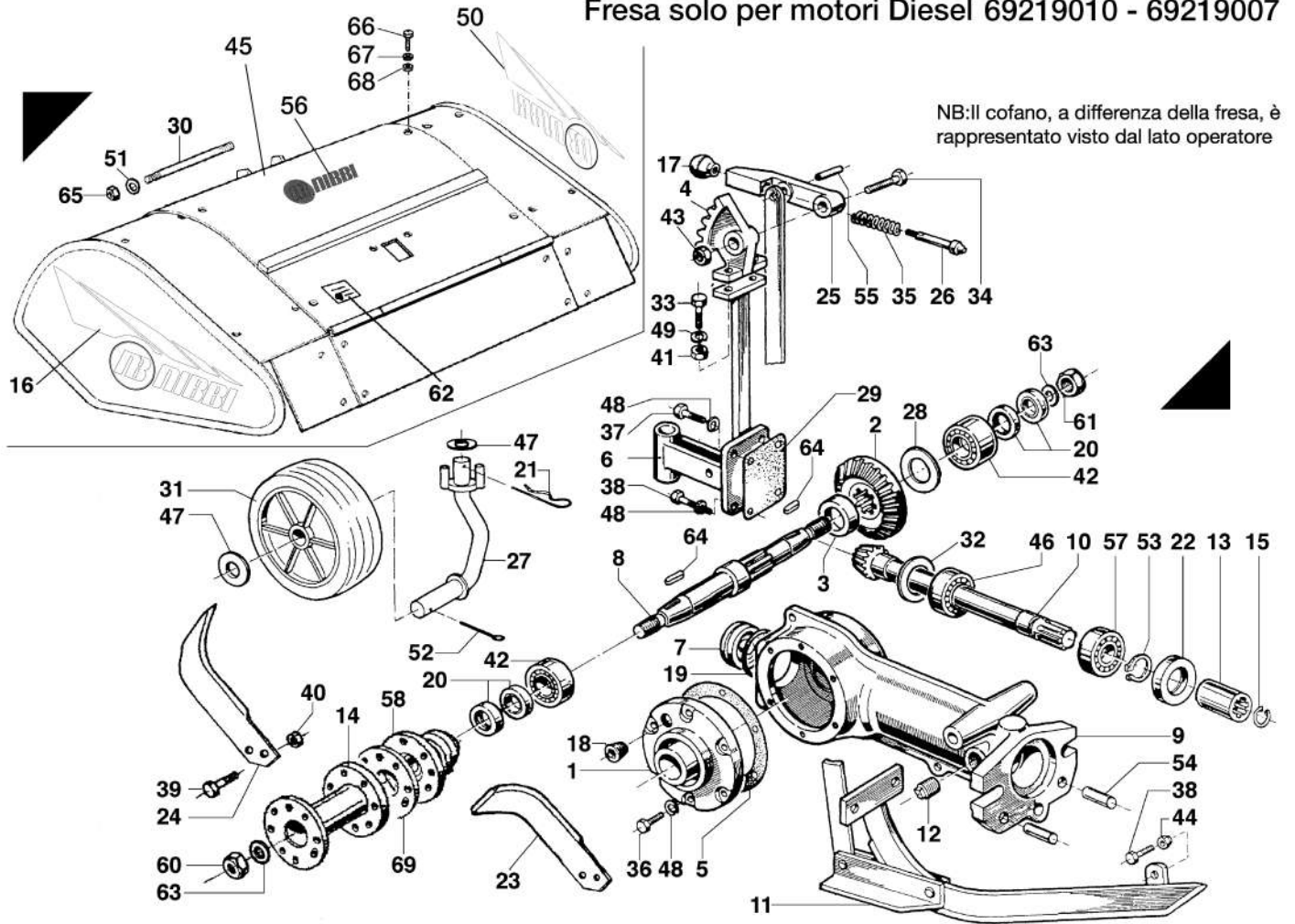


Illustration Tiller only for Diesel engines 69219010/69219007

Ref.Nu	Qty	Part number	Description	Validity from	Validity till	Notes	Bulletin
1	1	K4302260F	Cover				
2	1	YK4303570	Set bevel gear			Coppia conica K4303570;	
3	1	K4302320	Spacer				
4	1	K4302350B	Sector				
5	1	K4302360	Gasket				
6	1	69210249	Support				
7	1	YK4302520	Cap				
8	1	YK4308040	Shaft				
9	1	K4302640E	Arm				
10	1	YK4303570	Set bevel gear			Coppia conica K4303570;	
11	1	YK4308060	Plough				
12	1	K8535002	Cap				
13	1	YK1101080	Joint				
14	1	68340072R	Spacer			16 coltelli; 16 knives	
14	1	68340071R	Spacer			20 coltelli; 20 knives	
15	1	028200019	Ring				
16	1	68330030	Mark			Su richiesta; Upon request; SX; LEFT	
17	1	YK8211001	Knob				
18	1	K8536002	Cap				
19	1	YK7035045	O-ring				
20	1	YK7032029	Seal ring				
21	1	N1054500	Cotter pin				
22	1	YN0210045	Ring				
23	1	R0000133	Cutters kit			Kit composto da: F0013014,	
23	1	R0000134	Cutters kit			Kit composto da: F0016812,	
24	1	R0000133	Cutters kit			DX, 10pz + F0016813; SX, R0000134, 10pz + F0013014, 10pz. Set composto da:	
24	1	R0000134	Cutters kit			Kit composto da: F0016812,	
25	1	K2203550BR	Lever			DX, 10pz + F0016813; SX, R0000134, 10pz + F0013014, 10pz. Set composto da:	
26	1	K2203560R	Piston pin				
27	1	K3501830R	Support			F0013013, LEFT, 10PCS; knives tiller	
28	1	K8491044	Thickness			Fresa a 20 coltelli; 20	
29	1	YK1101230	Gasket				
30	1	N6417237	Screw				
31	1	YK1102480	Support wheel				
32	1	K8491030	Thickness				
33	1	YN6335900	Screw				
34	1	N6399710	Screw				
35	1	K7903026	Spring				
36	1	YN6255400	Screw				
37	1	N6262100	Screw				
38	1	3806067R	Screw				
39	1	N6325300	Screw				
39	1	N6332200R	Screw				
39	1	N6335800	Screw				

Illustration Tiller only for Diesel engines 69219010/69219007

Ref.Nu	Qty	Part number	Description	Validity from	Validity till	Notes	Bulletin
40	1	YN1463500	Nut				
41	1	N1464600R	Nut				
42	1	N1277001	Bearing				
43	1	K7272009	Nut				
44	1	YN1458800	Nut				
45	1	PA002065A	Hood			80-45 cm; Rosso; Red	
46	1	K7245001	Bearing				
47	1	3916020	Washer				
48	1	N4364350	Washer				
48	1	YN4379800	Washer				
49	1	3819014R	Grower				
50	1	68330029	Mark			Su richiesta; Upon request;	
51	1	3916012R	Washer				
52	1	YN1060200	Cotter pin				
53	1	YN0118500	Seeger				
54	1	K8504014	Pin				
55	1	K8503039R	Pin				
56	1	68610007	Mark			Su richiesta; Upon request	
57	1	YN1270701	Bearing				
58	1	68340074R	Support				
60	1	N1482600	Nut				
61	1	N1482500R	Nut				
62	1	F0015577	Mark (Danger)			Su richiesta; Upon request	
63	1	N4418000	Washer				
64	1	YN0652200	Key				
65	1	YN1470200	Nut				
66	1	3806063R	Screw				
67	1	3916009R	Washer				
68	1	320000028R	Nut				
69	1	F0016840	Flange				

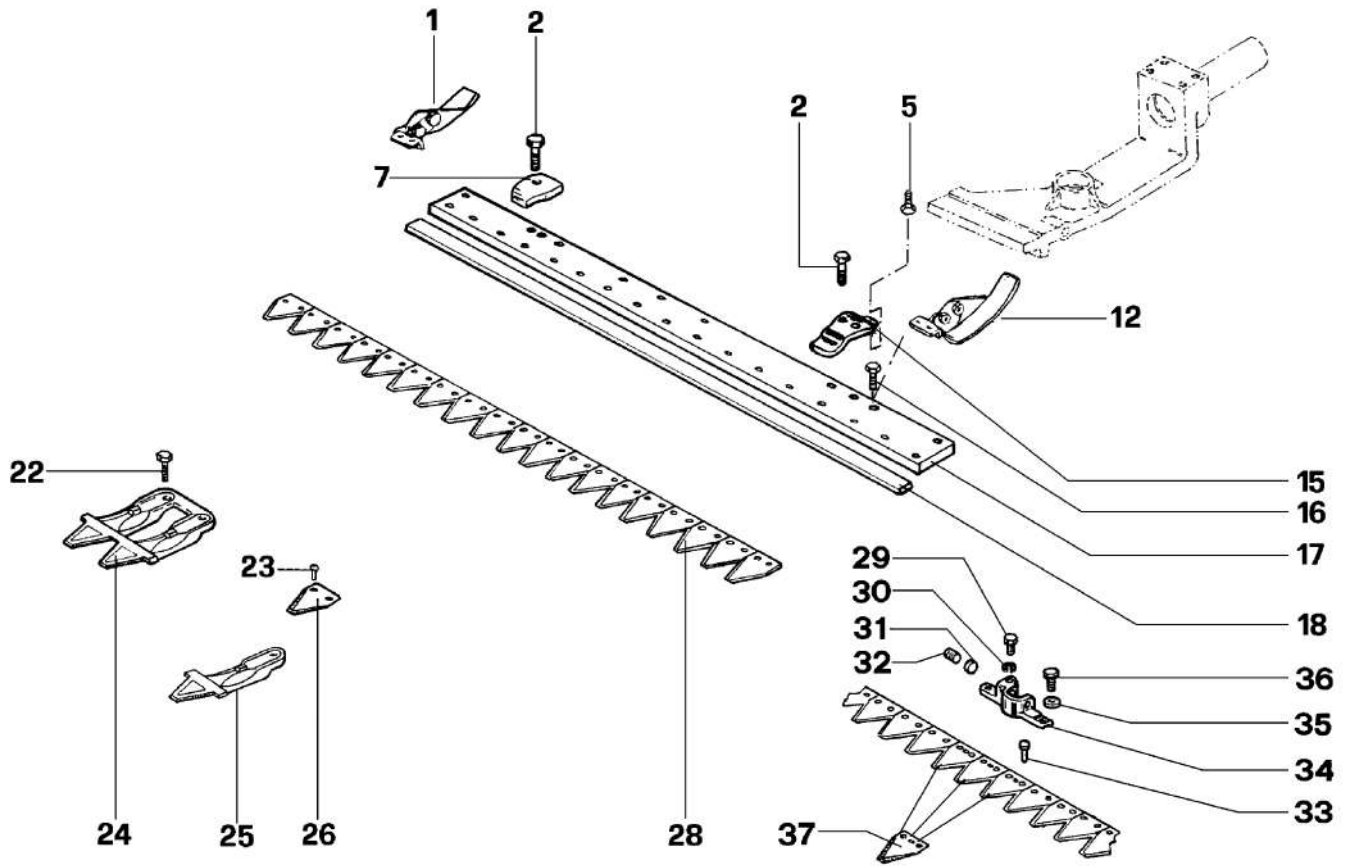


Illustration Special cutter bar 69229017/69229019/69229043

Ref.Nu	Qty	Part number	Description	Validity from	Validity till	Notes	Bulletin
1	1	YF1303153	Sliding block				
2	1	YN6332800	Screw				
5	1	N6245800	Screw				
7	1	YF0582687	Plate				
12	1	YF1303153	Sliding block				
15	1	F1113112R	Press blade (Long)				
16	1	N6321250	Screw				
17	1	F1303117	Plate			1150 mm	
17	1	F1303118	Plate			1270 mm	
18	1	F0591593R	Slide			1270 mm	
18	1	69220017	Rod			1150 mm	
22	1	YN6322000	Screw				
23	1	YN0886600	Rivet				
24	1	F1113114	Tooth (Double)				
25	1	F1113114	Tooth (Double)				
26	1	F1073216R	Blade				
28	1	YF1073276	Blade			1150 mm SP	
28	1	YF1073277	Blade			1270 mm SP	
29	1	YN6262200	Screw				
30	1	3819013R	Grower				
31	1	YF1073364	Valve				
32	1	N6433900R	Screw				
33	1	F1073261	Rivet				
34	1	YF1073363B	Clutch driver			Per barra SP; For SP bar	
35	1	3819013R	Grower				
36	1	3806063R	Screw				
37	1	YF1073273	Blade				

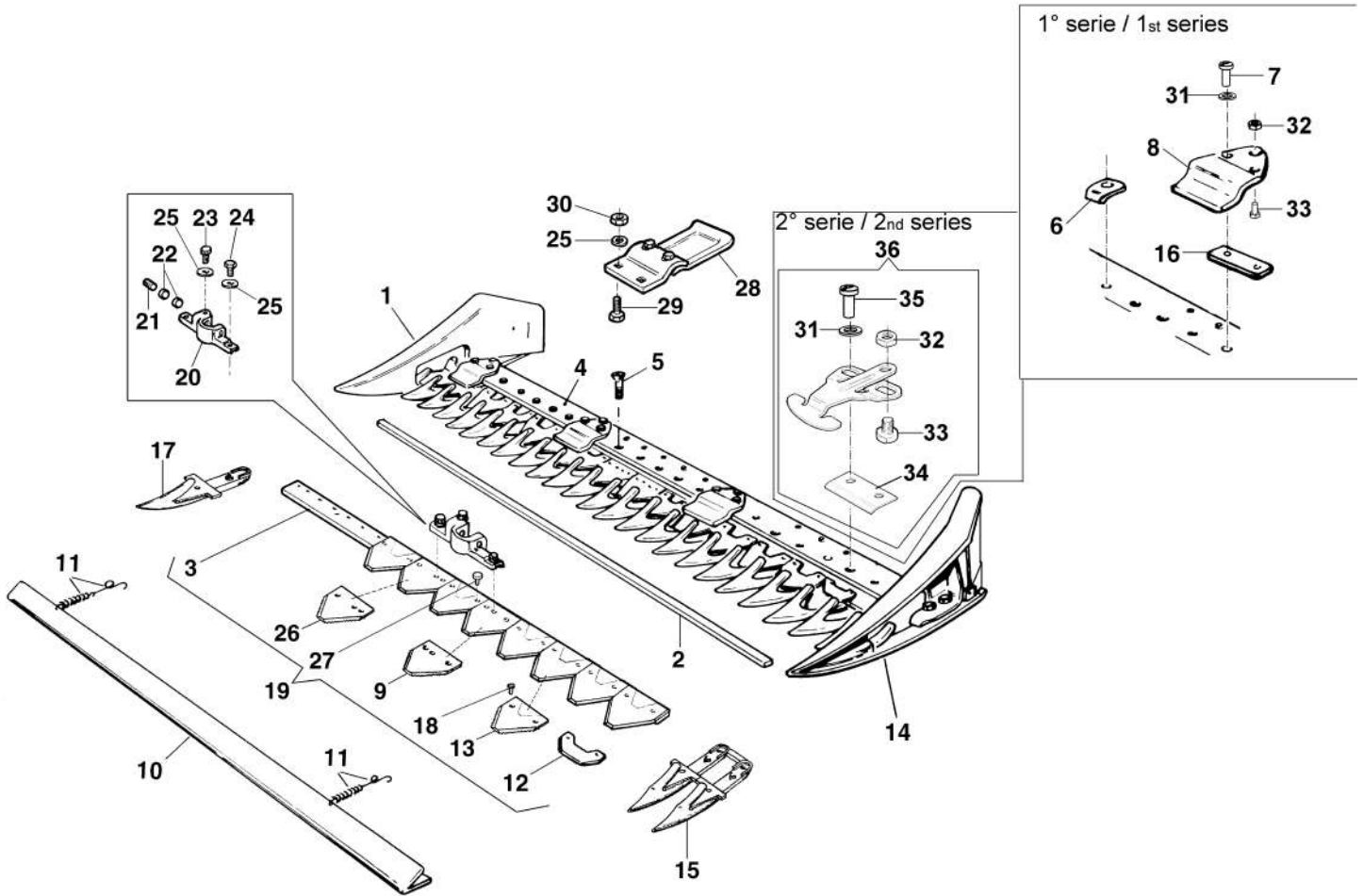


Illustration Middle fingers cutter bar 69229040/69229041/69229042

Ref.Nu	Qty	Part number	Description	Validity from	Validity till	Notes	Bulletin
1	1	69229098	Pair of directional guides for cutterbar			DX; RIGHT	
2	1	69220017	Rod				
3	1	69220023	Rod				
4	1	F1303117	Plate				
5	15	YN6325400	Screw				
6	4	69220018	Support		31/12/2013		BT12-010-07/14
7	8	3906099	Screw		31/12/2013		BT12-010-07/14
8	4	69220047	Pressblade kit		31/12/2013		BT12-010-07/14
9	1	F1073377R	Blade				
10	1	69220020	Guard				
11	2	69220022	Spring				
12	13	F1073317	Plate				
13	13	YF0582091	Blade				
14	1	69229098	Pair of directional guides for cutterbar			SX; LEFT	
15	11	F0582688R	Tooth (Double)				
16	12	LS621107	Spacer				BT12-010-07/14
17	1	F0582738	Tooth (Single)				
18	28	YN0886600	Rivet				
19	1	YF1073384	Blade				
20	1	YF1073376B	Clutch driver				
21	1	N6433900R	Screw				
22	2	YF1073364	Valve				
23	1	YN6262200	Screw				
24	2	3806063R	Screw				
25	7	3819013R	Grower				
26	1	F1073378R	Blade				
27	2	F1073261	Rivet				
28	2	69220024R	Complete slide				
29	8	3806070R	Screw				
30	8	320000028R	Nut				
31	8	3916010R	Washer				BT12-010-07/14
32	4	N1462800	Nut				BT12-010-07/14
33	4	N6314900	Screw				BT12-010-07/14
34	4	LS621197	Press blade	01/01/2014			BT12-010-07/14
35	8	N6333300	Screw	01/01/2014			BT12-010-07/14
36	4	69220047	Pressblade kit	01/01/2014			BT12-010-07/14

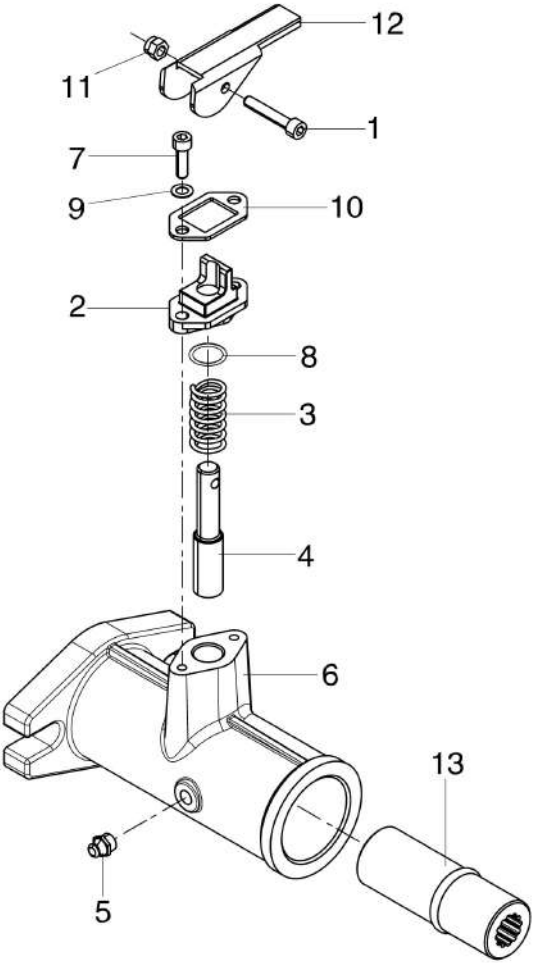


Illustration Quickfit

Ref.Nu	Qty	Part number	Description	Validity from	Validity till	Notes	Bulletin
1	1	3801027R	Screw				
2	1	YF1294702	Slide				
3	1	YN3118700	Spring				
4	1	YF1054710	Shutter				
5	1	YN2605600	Nipple				
6	1	YF1303110D	Flange				
7	2	3801022R	Screw				
8	1	3049016R	O-ring				
9	2	YN4358110	Washer				
10	1	YF1294701	Plate				
11	1	3914008R	Nut				
12	1	YF1294700	Lever				
13	1	YF1303111	Sleeve				

Movimento in bagno d'olio cod. L0101500

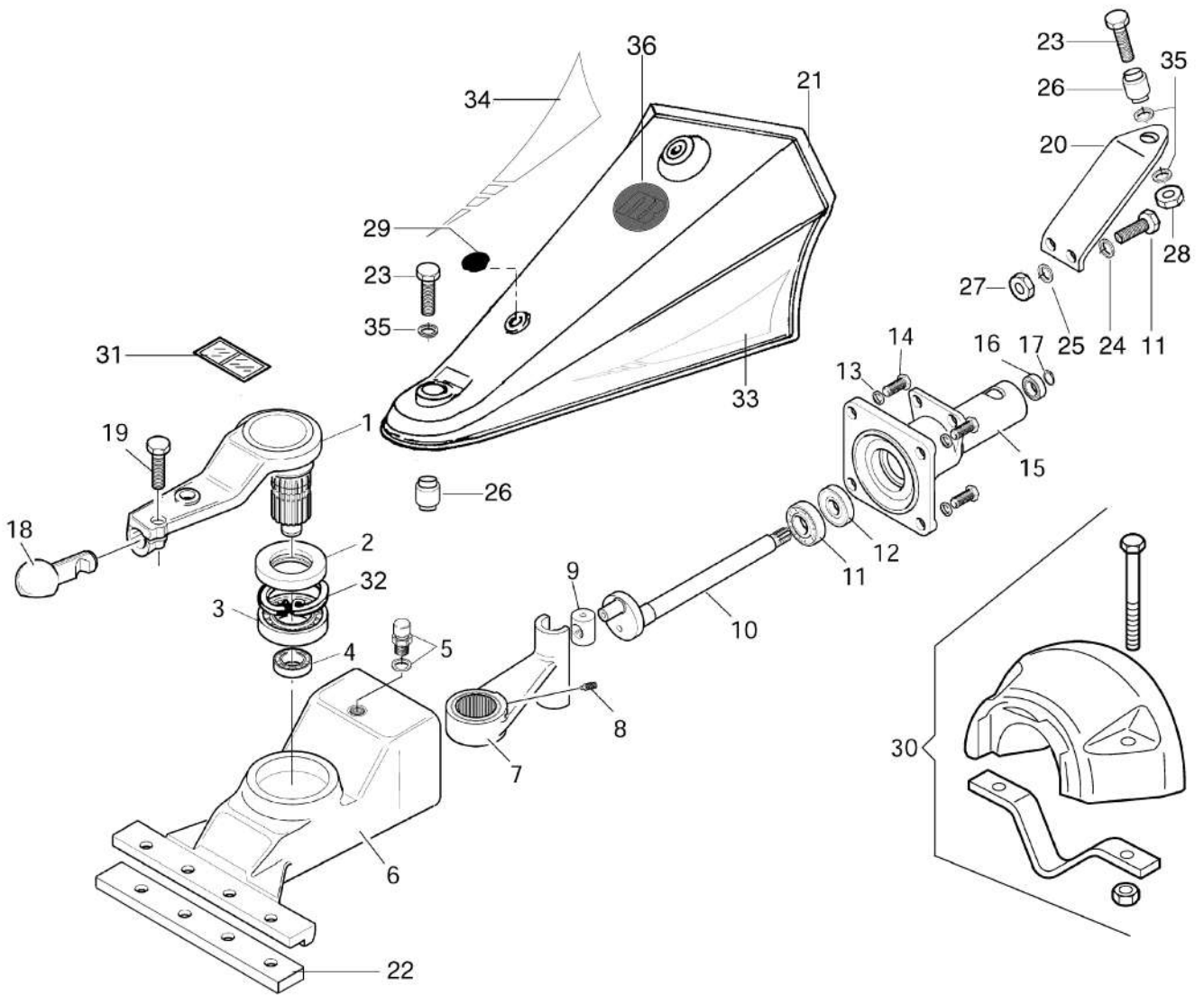


Illustration Oil bath movement L0101500

Ref.Nu	Qty	Part number	Description	Validity from	Validity till	Notes	Bulletin
1	1	69220069R	Connecting rod				
2	1	YN0222805	Ring				
3	1	YN1289200	Bearing				
4	1	YN1263701	Bearing				
5	1	YK4101420	Cap				
6	1	F1303100B	Housing				
7	1	F1303102DR	Connecting rod				
8	1	N6251000	Screw				
9	1	YF1303106	Switch				
10	1	F1303108	Shaft				
11	1	YN1272501	Bearing				
12	1	YN0210045	Ring				
13	1	3819014R	Grower				
14	1	3806094R	Screw				
15	1	F1303101BR	Cover				
16	1	YN1263201	Bearing				
17	1	3024020R	Seeger				
18	1	YF1303155B	Pin				
19	1	3806094R	Screw				
20	1	F1303128	Support				
21	1	F1303136	Hood				
22	1	L0081100	Washer			Utilizzare con ruote >	
23	1	N6399710	Screw				
24	1	3819013R	Grower				
25	1	3916008R	Washer				
26	1	N4924000R	Silent block				
27	1	320000028R	Nut				
28	1	YN1470200	Nut				
29	1	YN5265900	Cap				
30	1	L0105700	Set (Counterweight)				
31		N5381650	Mark (Danger)				
32	1	N0140800	Seeger				
33	1	68910014	Mark			Su richiesta; Upon request;	
34	1	68910015	Mark			SX; LEFT Su richiesta; Upon request;	
35	1	3916012R	Washer				
36	1	68250018R	Plate NIBBI				

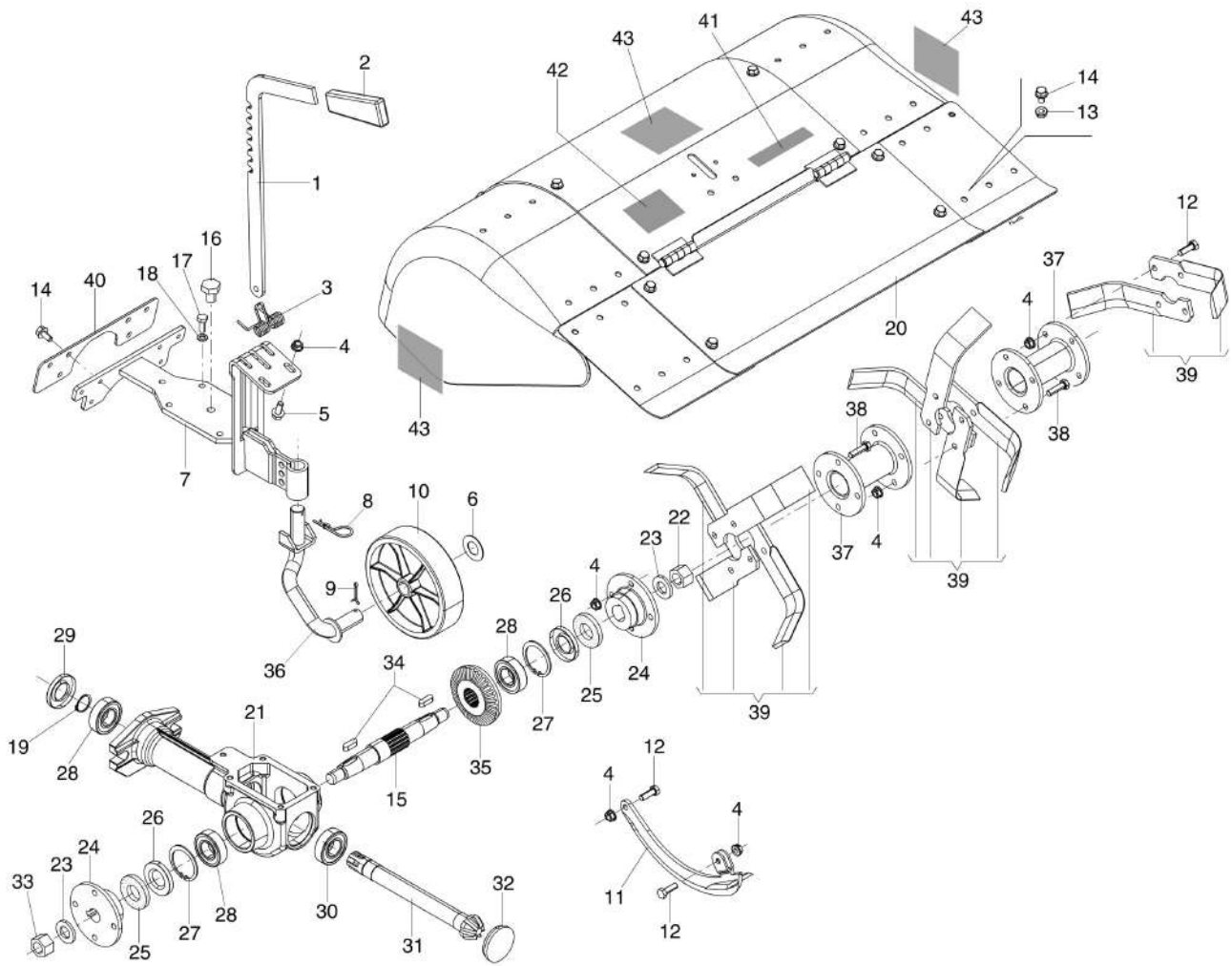


Illustration 70 cm rotor with adjustable cowling and fixed connection 69219069

Ref.Nu	Qty	Part number	Description	Validity from	Validity till	Notes	Bulletin
1	1	69210262	Rod				
2	1	N2840490	Knob				
3	1	69210102R	Spring				
4	28	YN1457570	Nut				
5	2	3906070R	Screw				
6	1	N5003250	Washer				
7	1	69210248R	Cover				
8	1	N1054500	Cotter pin				
9	1	YN1060200	Cotter pin				
10	1	YK1102480	Support wheel				
11	1	69210240R	Cutter tool				
12	10	3806067R	Screw				
13	12	3933032R	Nut				
14	12	3933034AR	Screw				
15	1	YF0013531	Shaft				
16	1	YN5254000	Oil cap				
17	5	3933034AR	Screw				
18	5	3819013R	Grower				
19	1	YN0118500	Seeger				
20	1	69210139R	Complete hood (70cm)			Colore Grigio; Grey color	
21	1	69210209AR	Tiller body				
22	2	N1482500R	Nut			Filettatura DX; RH thread	
23	2	N4418000	Washer				
24	2	69210246R	Support				
25	2	YF0013525	Felt				
26	2	YN0210050	Gasket				
27	2	YN0136800	Seeger				
28	3	YN1270701	Bearing				
29	1	YN0210045	Ring				
30	1	YN1270751	Bearing				
31	1	69210210R	Sprocket				
32	1	YN5276700	Cap				
33	1	N1482600	Nut			Filettatura SX; LH thread	
34	2	YN0652200	Key				
35	1	F0015582R	Rim				
36	1	K3501830R	Support				
37	4	69210272R	Spacer				
38	16	N6274000	Screw				
39	1	R0000138	Cutters kit			Per fresa 70 cm, kit composto da: F0015602, DX. 10pz + F0015603. SX.	
40	1	69210109R	Plate			Su richiesta; Upon request	
41	1	3056374R	Mark (Made in Italy)			composed by: F0015602, Su richiesta; Upon request	
42	1	YF1233111	Mark (Danger)			RIGHT, 10 pcs + F0015603, Su richiesta; Upon request	
43	3	69210220R	Mark NIBBI			Su richiesta; Upon request	

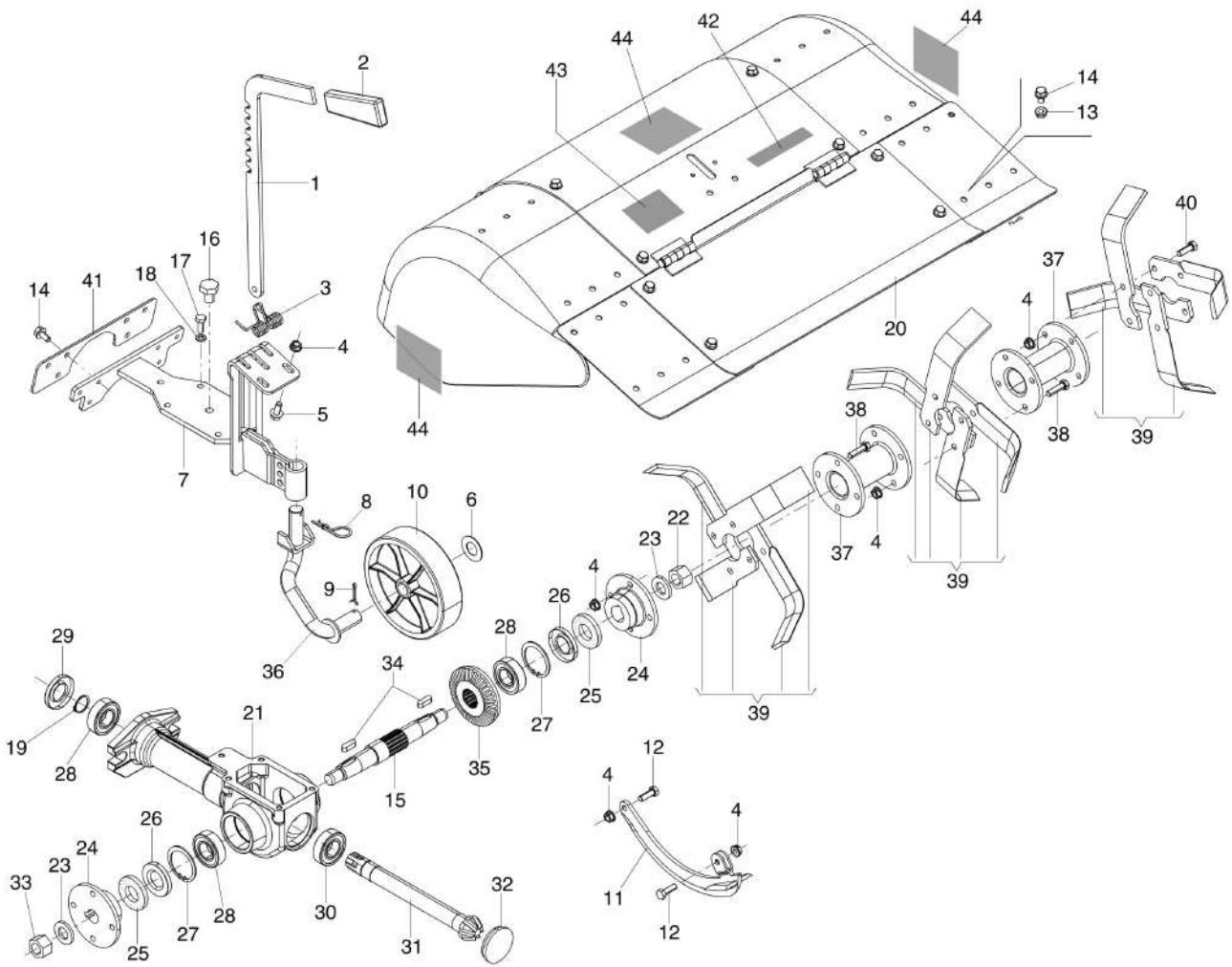


Illustration 80 cm rotor with adjustable cowling and fixed connection 69219067

Ref.Nu	Qty	Part number	Description	Validity from	Validity till	Notes	Bulletin
1	1	69210262	Rod				
2	1	N2840490	Knob				
3	1	69210102R	Spring				
4	28	YN1457570	Nut				
5	2	3906070R	Screw				
6	1	N5003250	Washer				
7	1	69210248R	Cover				
8	1	N1054500	Cotter pin				
9	1	YN1060200	Cotter pin				
10	1	YK1102480	Support wheel				
11	1	69210240R	Cutter tool				
12	10	3806067R	Screw				
13	12	3933032R	Nut				
14	12	3933034AR	Screw				
15	1	YF0013531	Shaft				
16	1	YN5254000	Oil cap				
17	5	3933034AR	Screw				
18	5	3819013R	Grower				
19	1	YN0118500	Seeger				
20	1	69210135R	Complete hood (80cm)			Colore Grigio; Grey color	
21	1	69210209AR	Tiller body				
22	2	N1482500R	Nut			Filettatura DX; RH thread	
23	2	N4418000	Washer				
24	2	69210246R	Support				
25	2	YF0013525	Felt				
26	2	YN0210050	Gasket				
27	2	YN0136800	Seeger				
28	3	YN1270701	Bearing				
29	1	YN0210045	Ring				
30	1	YN1270751	Bearing				
31	1	69210210R	Sprocket				
32	1	YN5276700	Cap				
33	1	N1482600	Nut			Filettatura SX; LH thread	
34	2	YN0652200	Key				
35	1	F0015582R	Rim				
36	1	K3501830R	Support				
37	4	69210272R	Spacer				
38	16	N6274000	Screw				
39	1	R0000138	Cutters kit			Per fresa 80 cm, kit composto da: F0015602, DX. 10pz + F0015603. SX.	
40	8	322000001R	Screw				
41	1	69210109R	Plate				
42	1	3056374R	Mark (Made in Italy)			composed by: F0015602, Su richiesta; Upon request	
43	1	YF1233111	Mark (Danger)			Su richiesta; Upon request	
44	1	69210220R	Mark NIBBI			Su richiesta; Upon request	

TECNICO • TECHNICAL	●
RICAMBI • SPARE PARTS	●
INFORMAZIONI • INFORMATION	

GRUPPO • GROUP	12
NR • NO	010
DATA • DATE	07-14

GENERALE - RICAMBI - GARANZIA General - Spares - Warranty	-1-	ACCESSORI Accessories	-2-	PRODOTTI DI COMPLEMENTO Other products	-6-	MOTOZAPPE Rotary tillers	-9-
TRINCIASARMENTI Flail mowers	-10-	TRANSPORTER	-11-	MOTOCOLTIVATORI Rotary cultivators	-12- ●		

I **MODELLI: Motocoltivatori MAK 16 - MAK17 - MAK 18 - KAM 4 - KAM 5**

OGGETTO: Premilama, premistriscia

DESCRIZIONE: Miglioramento prodotto. Introdotta un nuovo premilama e premistriscia sulle barre semifitte. La modifica comporta l'eliminazione del premistriscia cod. 69220018

INTERCAMBIABILITÀ: Sì, utilizzando il kit cod. 69220047

DISPONIBILITÀ RICAMBI: Tutti i particolari premodifica continuano ad essere forniti ad eccezione del premilama cod. 69220019 che verrà fornito ad esaurimento

DECORRENZA: 01/01/14

GB **MODELS: MAK 16 - MAK17 - MAK 18 - KAM 4 - KAM5 rotary cultivators**

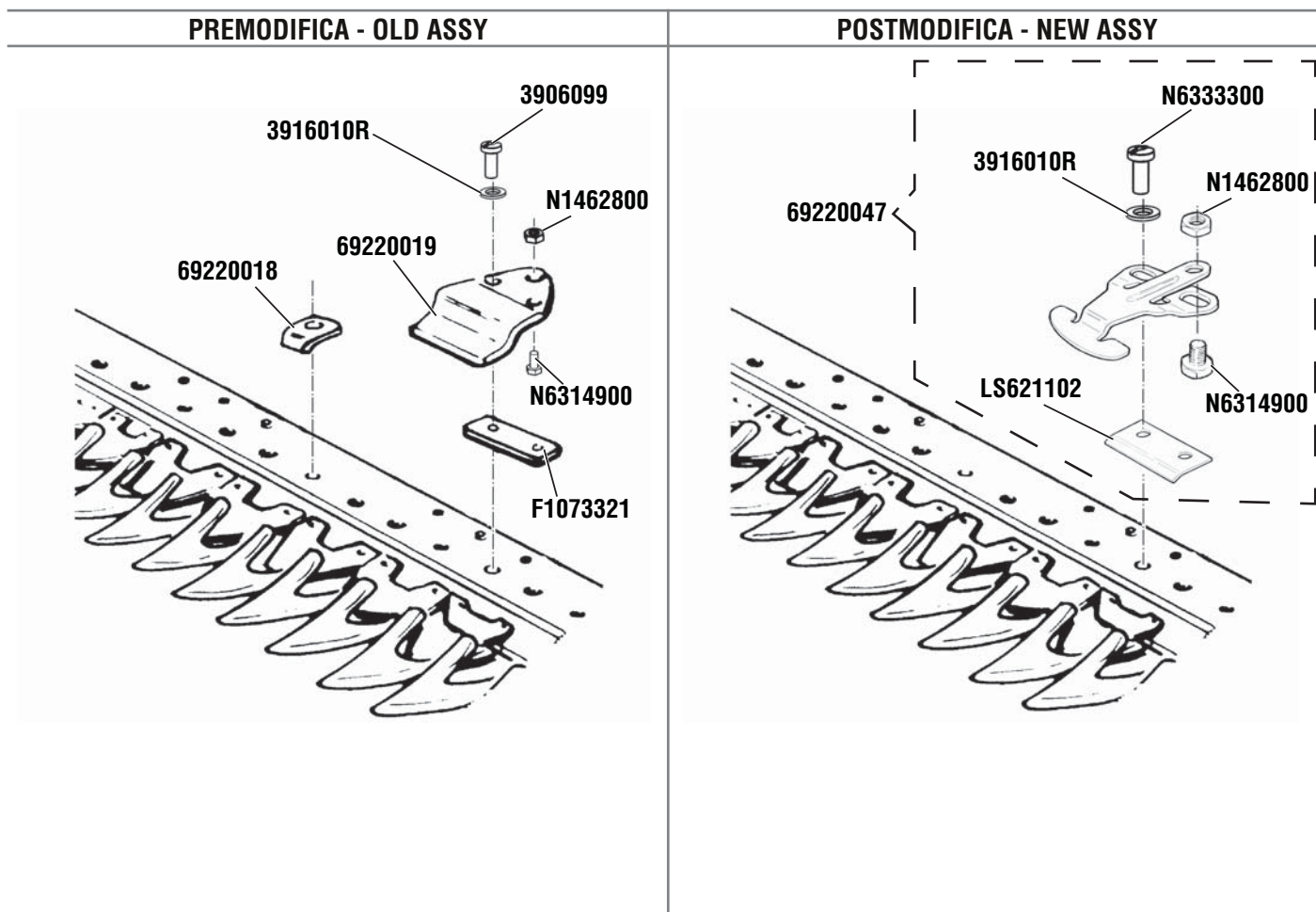
SUBJECT: Pressblade, press strip

DESCRIPTION: Product improvement. Introduce a new pressblade and press strip on half-fine cutterbar. The modification involves the elimination of press strip p/n 69220018

INTERCHANGEABILITY: Yes, using the kit p/n 69220047

PARTS AVAILABILITY: All premodified parts continue to be available to spare except for the pressblade p/n 69220019 that will be supplied until end of the stock

CUT-IN DATE: 01/01/14





our power, your passion

BOLLETTINO - BULLETIN

TECNICO • TECHNICAL	
RICAMBI • SPARE PARTS	
INFORMAZIONI • INFORMATION	●

GRUPPO • GROUP	1
NR • NO	01
DATA • DATE	10-10

GENERALE - RICAMBI - GARANZIA General - Spares - Warranty	-1- ●	ACCESSORI Accessories	-2-	PRODOTTI DI COMPLEMENTO Other products	-6-	MOTOZAPPE Rotary tillers	-9-
TRINCIASARMENTI Flail mowers	-10-	TRANSPORTER	-11-	MOTOCOLTIVATORI Rotary cultivators	-12-		

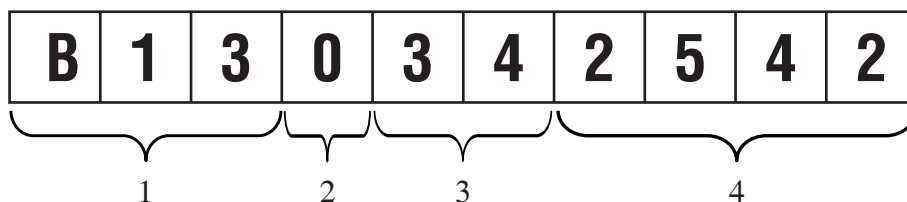
I **MODELLI: Motozappe - Motocoltivatori - Motofalciatrici - Transporters - Trinciasarmenti**
OGGETTO: Numero di matricola

DESCRIZIONE: Il numero di matricola identifica il modello macchina, periodo di produzione e il numero progressivo delle macchine prodotte.

GB **MODELS: Rotary tillers - Rotary cultivators - Cutterbar mowers - Transporters - Flail mowers**
SUBJECT: Serial number

DESCRIPTION: The serial number identifies the machine model, date of production and progressive number of produced machines.

ESEMPIO / EXAMPLE



1 = MODELLO/MODEL
 3 = SETTIMANA/WEEK

2 = ANNO/YEAR
 4 = NUMERO PROGRESSIVO/
 PROGRESSIVE NUMBER

PREFISSO/PREFIX	MODELLO/MODEL
B01	FC20/FC20L/FC30
B02	FC30M
B03	FC30H/FC30HM
B04	BRIK1/BRIK3
B05	KAM4/KAM5
B06	119
B07	106
B08	110/112
B09	115
B10	160/162
B11	NTR 270V/350V
B12	NTR 450/550/550D/1750D/2250D

PREFISSO/PREFIX	MODELLO/MODEL
B13	NTS 65/80
B14	121/122
B31	MAK16/MAK17/MAK18
B33	193/194
B34	NTS 50
B35	101/102
B39	100
B41	090
850	010

TECNICO • TECHNICAL	●	GRUPPO • GROUP	1
RICAMBI • SPARE PARTS	●	NR • NO	003
INFORMAZIONI • INFORMATION		DATA • DATE	06-16

GENERALE - RICAMBI - GARANZIA General - Spares - Warranty	-1- ●	ACCESSORI Accessories	-2-	PRODOTTI DI COMPLEMENTO Other products	-6-	MOTOZAPPE Rotary tillers	-9-
TRINCIASARMENTI Flail mowers	-10-	TRANSPORTER	-11-	MOTOCOLTIVATORI Rotary cultivators	-12-		

I

MODELLI: Tutte le macchine di nuova produzione

OGGETTO: Nuovo layout etichetta numero di matricola

DESCRIZIONE: A partire da giugno 2016 sulle macchine di nuova produzione verranno introdotte le etichette con nuovo layout.

Sulle macchine avremo una sola etichetta (Fig. A) che comprende tutte le informazioni obbligatorie per il rispetto delle normative vigenti.

Il numero di matricola, oltre che sulla macchina è riportato sul manuale uso e manutenzione (Fig. B) e sulla scatola imballo (Fig. C)

NOTE: La lettura della matricola rimane invariata

GB

MODELS: All newly produced machines

SUBJECT: New serial number label layout

DESCRIPTION: From June 2016 on newly produced machines will be introduced the new labels layout.

On the machines we will have only one label (Fig. A), that includes all the required information to comply with current regulations.

The serial number, as well as on the machine, is shown on the user manual (Fig. B) and on the external packaging (Fig. C)

NOTES: The serial number reading is unchanged

PREMODIFICA - OLD ASSY	POSTMODIFICA - NEW ASSY
<p>Sulla macchina / On the machine:</p>	<p>Sulla macchina / On the machine:</p> <p>Fig. A</p>
<p>Sul manuale uso e manutenzione / On user manual:</p>	<p>Sul manuale uso e manutenzione / On user manual:</p> <p>Fig. B</p>
<p>Sulla scatola imballo/ On external packaging:</p>	<p>Sulla scatola imballo / On external packaging:</p> <p>Fig. C</p>

TECNICO • TECHNICAL	●	GRUPPO • GROUP	12
RICAMBI • SPARE PARTS	●	NR • NO	008
INFORMAZIONI • INFORMATION		DATA • DATE	03-14

GENERALE - RICAMBI - GARANZIA General - Spares - Warranty	-1-	ACCESSORI Accessories	-2-	PRODOTTI DI COMPLEMENTO Other products	-6-	MOTAZAPPE Rotary tillers	-9-
TRINCIASARMENTI Flail mowers	-10-	TRANSPORTER	-11-	MOTOCOLTIVATORI Rotary cultivators	-12-		

I **MODELLI: Motocoltivatori MAK 16 - BRIK 1 - BRIK 3 - KAM 4 - KAM 5 - KAM 5 HF - KAM 5 JUNIOR**

OGGETTO: Interruttore arresto motore

DESCRIZIONE: Introdotta un nuovo interruttore d'arresto motore. Compatibile su modelli equipaggiati con motori Honda GX 270 / GX 340 versioni T1 e H (cavetto singolo), Honda GX 160 - GC 160 - GX 200, Emak K 800H, Kohler CH 270 - CH 395.

INTERCAMBIABILITÀ: Sì.

DISPONIBILITÀ RICAMBI: L'interruttore premodifica verrà fornito ad esaurimento; il cavetto premodifica continua ad essere disponibile.

DECORRENZA: (MAK 16) 03/03/14, matr.B034100001 (BRIK 1 - BRIK 3) 08/11/13, matr.B043456555
(KAM 4 - KAM 5 - KAM 5 HF - KAM 5 JUNIOR) 01/11/13, matr.B053449246

GB **MODELS: MAK 16 - BRIK 1 - BRIK 3 - KAM 4 - KAM 5 - KAM 5 HF - KAM 5 JUNIOR Rotary cultivators**

SUBJECT: Engine stop switch

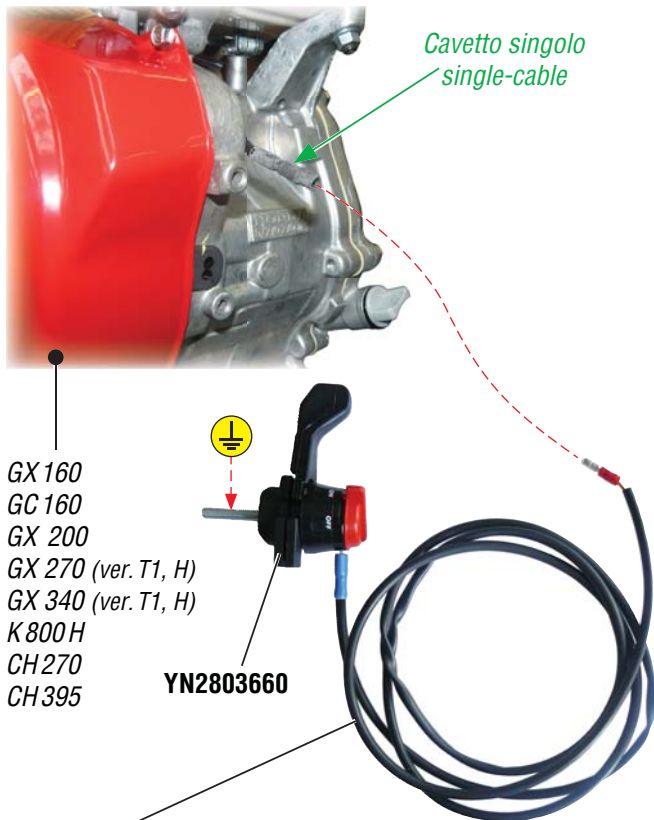
DESCRIPTION: Introduced a new engine stop switch. Compatible on models equipped with Honda GX 270 / GX 340 version T1 e H (single cable), Honda GX 160 - GC 160 - GX 200, Emak K 800H, Kohler CH 270 - CH 395 engine.

INTERCHANGEABILITY: Yes.

PARTS AVAILABILITY: Old switch will be supplied until end of the stock; the old cable continue to be available.

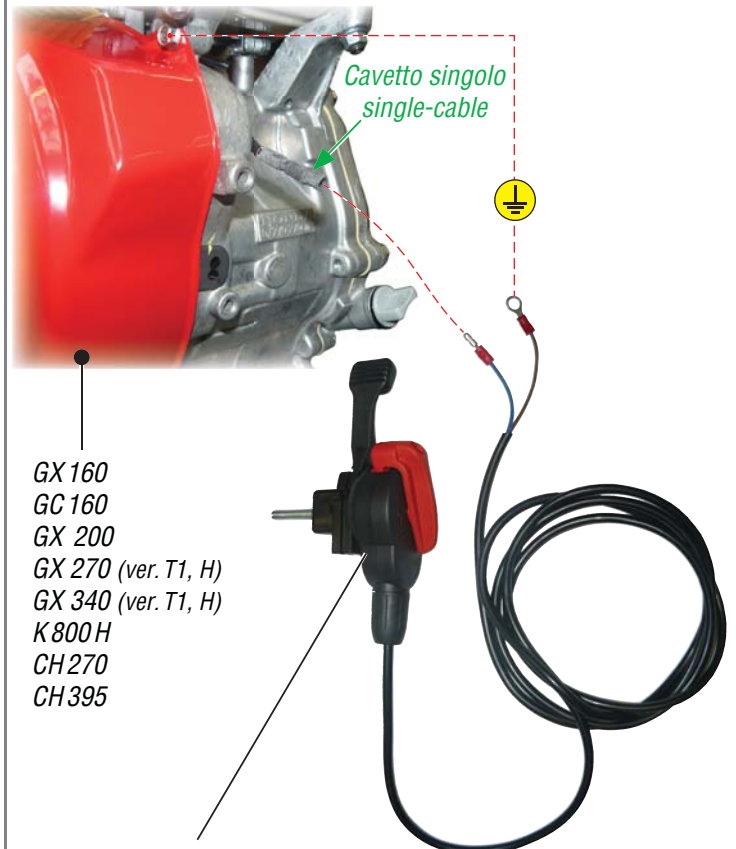
CUT-IN DATE: (MAK 16) 03/03/14, serial n° B034100001 (BRIK 1 - BRIK 3) 08/11/13, serial n° B043456555
(KAM 4 - KAM 5 - KAM 5 HF - KAM 5 JUNIOR) 01/11/13, serial n° B053449246

PREMODIFICA - OLD ASSY



(MAK 16) **68330113**
(BRIK 1 - BRIK 3 - KAM 4 - KAM 5 - KAM 5 HF - KAM 5 JUNIOR) **68310059**

POSTMODIFICA - NEW ASSY



(MAK 16) **3044011R**
(BRIK 1 - BRIK 3 - KAM 4 - KAM 5 - KAM 5 HF - KAM 5 JUNIOR) **3044010R**

Product Information

Language	INGLESE
Nr.	10
Date	02/2012
Subject	EN-709



Compliance with standard UNI-EN-709



Rotary cultivators

The recent update of safety measures (contained in standard UNI-EN-709) called for a revision of the following product types for agricultural applications in relation to the operator safety devices:

rotary tillers
rotary cultivators

In the case of rotary cultivators, the main changes prompted by the update concern the following functional areas of the machine:

1. Control system
2. Soil working tool
3. Speed change
4. Braking system

Emak has met these requirements by implementing dedicated technical solutions and redesigning the layout of certain controls.

TECHNICAL SOLUTIONS

• **Control system:** Irrespective of the type of transmission installed on the rotary cultivators, the machine must have a hold-to-run control, configured in such a way that:

- when the operator releases the levers, the engine does not shut off
- activation of the lever occurs in two distinct stages.

New features were required in order to keep the engine running even when the operator is absent and to avoid involuntary activation of the controls, notably:

A) a new clutch type, known as a reverse clutch. This is a normally disengaged clutch (drive not transmitted between engine and gearbox) that makes it possible to keep the engine running when the control levers are not operated, both with a gear engaged and in neutral. Moreover, when the levers are released the rotary cultivator remains braked thanks to a safety brake device installed on the clutch (Fig.1). This supplementary brake is applied whenever the clutch is disengaged, thereby avoiding uncontrolled movement of the machine and protecting the operator's safety.

B) a new system for activation of the reverse clutch, called QUICK-START and composed of:

1) Dual control lever comprising:

- an upper holding lever operated by means of two separate movements (Fig.2 A) and with force of less than 27.5 N (approximately 3 kg);
- a lower drive lever, operated with just one hand (Fig.2 B) and equipped with manual locking and automatic release (Fig.2 C) thus maximizing operator comfort.

2) Rocker: this device is tripped when both levers have been activated by the operator, consequently controlling engagement of the clutch. (Fig.3)

3) Spring shock absorber: composed of a steel cylinder and a preloaded spring; manages simultaneous operation of the control levers and transmits the necessary force for operation of the clutch. (Fig.4) In synthesis, the use of the QUICK START system means that simultaneous activation of the two levers enables the load to be transferred from the rocker to the shock absorber, thereby causing the clutch to engage and transmit drive between engine and gearbox.

It follows that the current Motor Stop system will no longer be installed on the rotary cultivators.

Fig. 1



Fig. 2

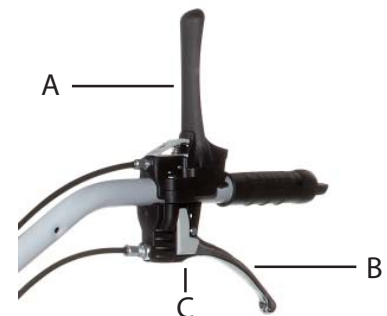
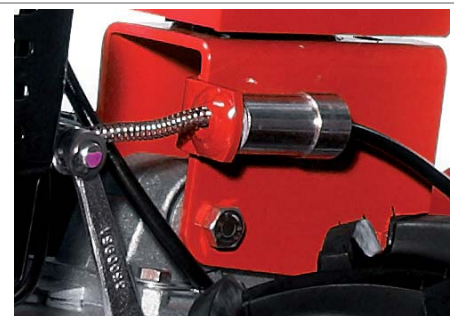


Fig. 3

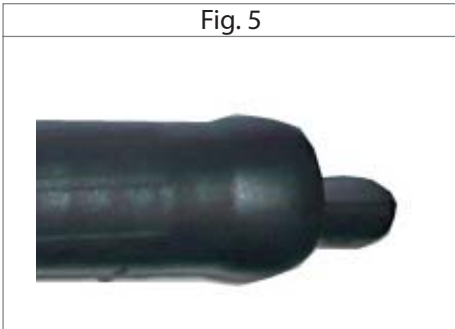


Fig. 4



TECHNICAL SOLUTIONS

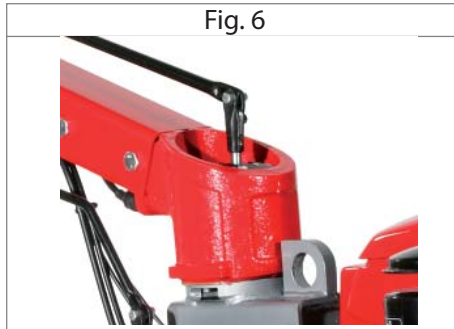
Fig. 5



• **Soil working tool:**

The standard specifies that, under any given operating condition, the minimum distance between the operator and the tool shall be between 600 mm and 700 mm. Accordingly, spacer knobs have been added to the ends of the handgrips; this modification also improves ergonomic efficiency during operations.

Fig. 6



• **Speed change:**

The ground speed of certain rotary cultivators in the range has been revised in order to comply with the new limits imposed by the standard (8 km/h forward and 3 km/h reverse).

Fig. 7



• **Braking system:**

All rotary cultivators, with the exception of models BRIK 1 and BRIK 3, will be equipped as standard with service brakes that can be operated directly from a lever on the handlebar (a double lever for models with differential), allowing immediate immobilisation of the machine when necessary (such as stopping on a gradient or negotiation of obstacles).

Rotary cultivators				
Model	QUICK-START	Speed change comply	Soil working tool	Braking system
BRIK 1	●	-	●	-
BRIK 3	●	-	●	-
KAM 4	●	●	●	●
KAM 5	●	●	●	●
MAK 16	●	●	●	●