



our **power**, your **passion**

NIBBI MAK 5

(OP TIL ÅRG. 2009)



Henrik A. Fog A/S

Lyngager 5-11

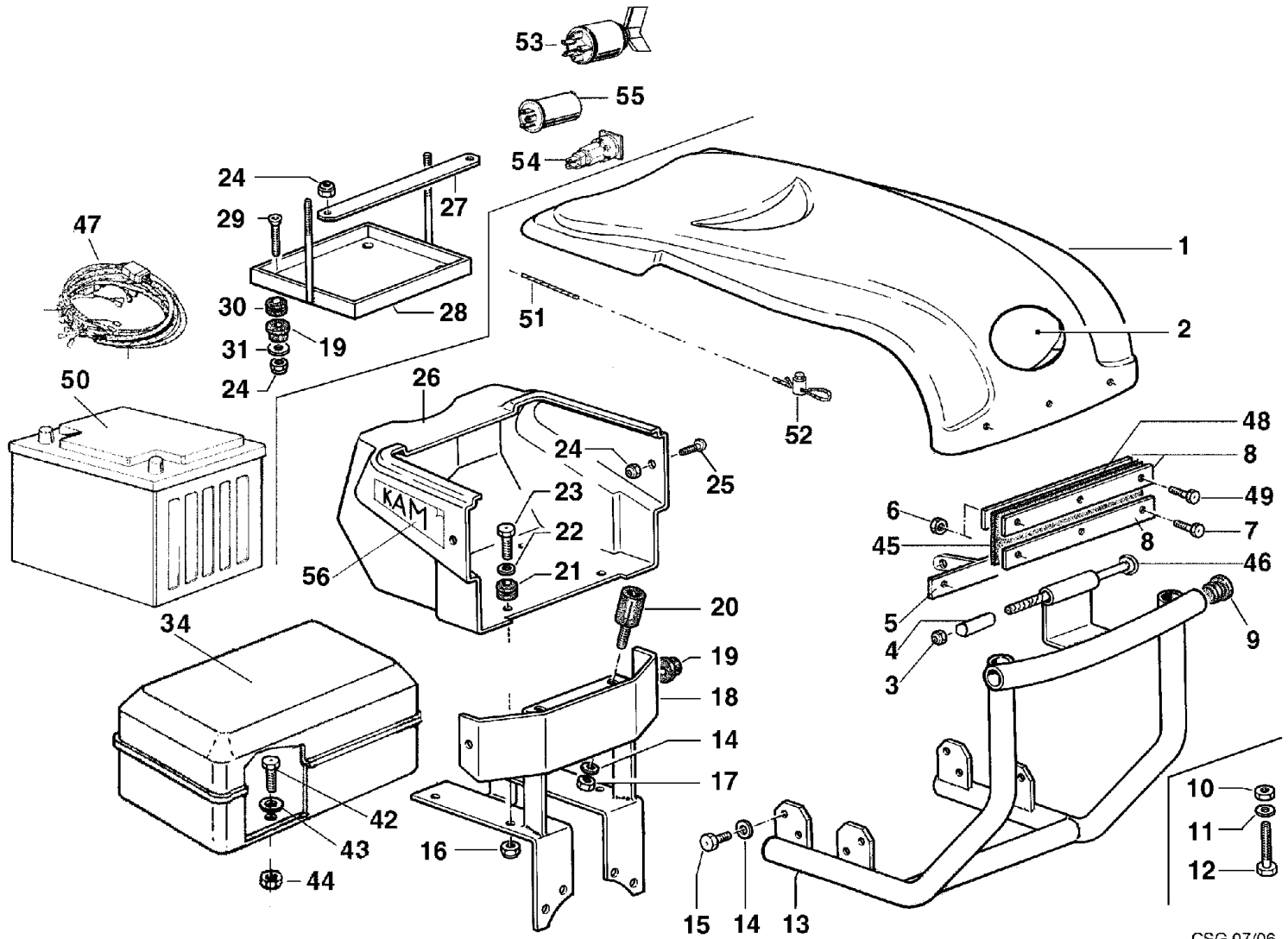
2605 Brøndby

Tel 43966611

Fax 43266624

reservedele@hafog.dk

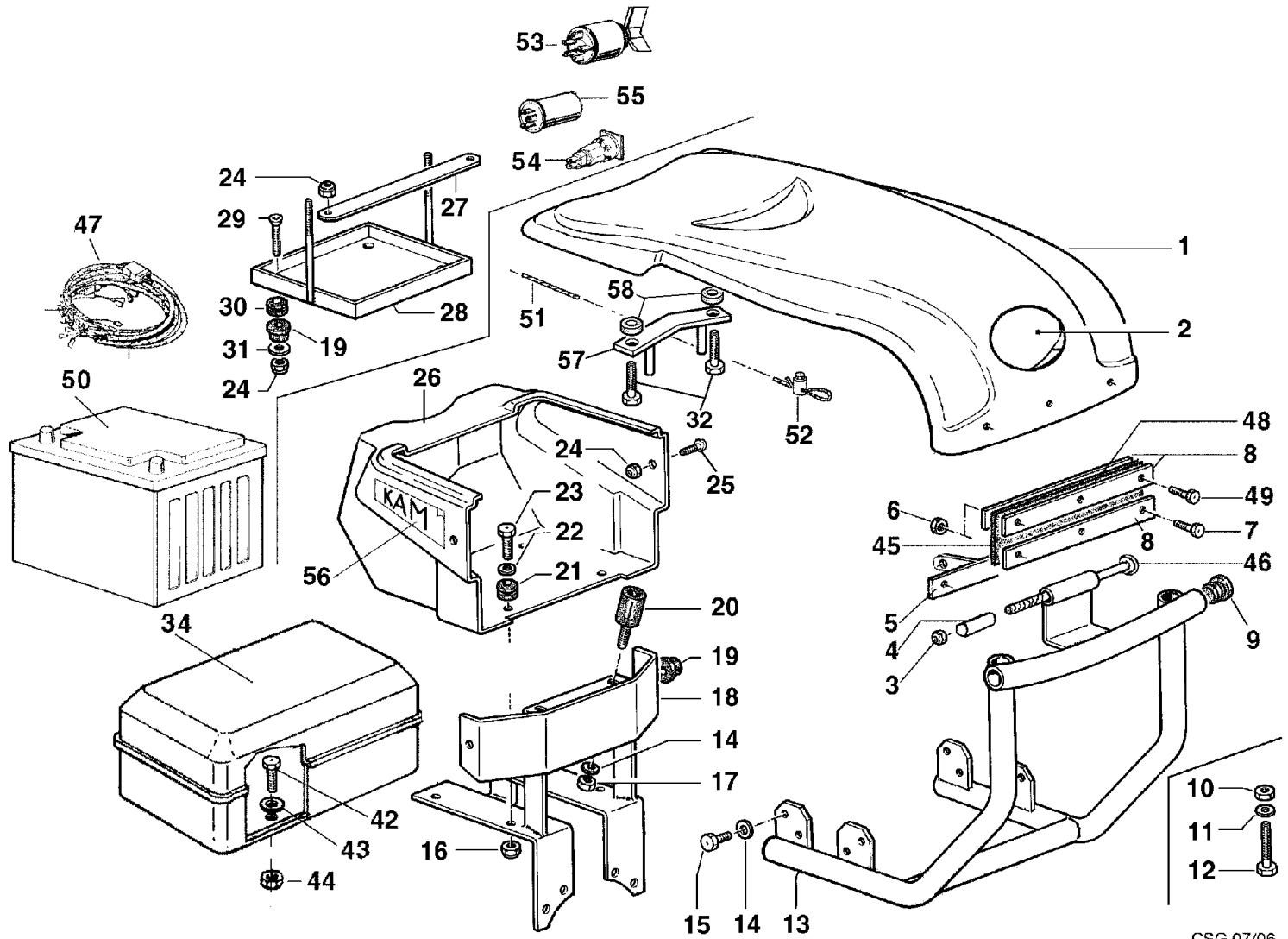
www.hafog.dk



CSG 07/06

Ref.Nu	Qty	Part number	Description	Validity from	Validity till	Notes	Bulletin
1	1	68322106	Hood				
2		-	Not available for this product				
3	1	YN1458020	Nut				
4	1	F1292146	Spacer				
5	1	68320059	Support				
6	1	3914006R	Nut				
7	1	3906016R	Screw				
8	1	68320055	Main board				
9	1	N5267400	Cap				
10	1	3914010R	Nut			Honda GX160	
10	1	006000091R	Nut			15LD400; 15LD400 AE; ACT280; 15LD315; 15LD350; 15LD350 AE; Honda GX270; Kohler CS8.5; Kohler CS8.5 AE	
11	1	3916008R	Washer			Honda GX160	
11	1	YN4376400	Washer			15LD400; 15LD400 AE; ACT280; 15LD315; 15LD350; 15LD350 AE; Honda GX270; Kohler CS8.5; Kohler CS8.5 AE	
12	1	N6294400	Screw			Honda GX160	
12	1	N6354300	Screw			ACT280; Honda GX270; Kohler CS8.5; Kohler CS8.5 AE	
12	1	3806067R	Screw			Honda GX160	
12	1	YN6335900	Screw			15LD400; 15LD400 AE; 15LD315; 15LD350; 15LD350 AE	
13	1	68320064	Support			15LD315; 15LD350	
13	1	F1292108	Support			ACT280	
13	1	F1292109	Support			ALN330	
13	1	68320076	Support			IM359; A349; CA340	
13	1	68320057	Support			Honda GX270	
13	1	68320058	Support			Honda GX160	
13	1	F1292175	Support			15LD400; 15LD400 AE	
13	1	68320068	Support			Kohler CS8.5; Kohler CS8.5 AE	
14	1	YN4365400	Washer			IM359; IM349; IM359 AE; A349 AE; CA340	
15	1	3806063	Screw			IM359; IM349; IM359 AE; A349 AE; CA340	
16	1	3914010R	Nut			15LD400; 15LD400 AE; ACT280; 15LD315; 15LD350; 15LD350 AE; Honda GX270; Kohler CS8.5; Kohler CS8.5 AE; IM359; IM349; IM359 AE; A349 AE; CA340	
17	1	320000028R	Nut				
18	1	F1292104	Support			Honda GX270; IM359; IM349; IM359 AE; A349 AE; CA340; 15LD315; 15LD350; 15LD350 AE	
18	1	68320044	Support			Honda GX160	
18	1	68320007R	Support	04/2004		15LD400; 15LD400 AE	
19	1	F0752170	Buffer				
20	1	YF0752159	Silent block				
21	1	YN0400530	Grommet			15LD400; 15LD400 AE; ACT280; 15LD315; 15LD350; 15LD350 AE; Honda GX270; Kohler CS8.5; Kohler CS8.5 AE; IM359; IM349; IM359 AE; A349 AE; CA340	
22	1	3916008R	Washer			15LD400; 15LD400 AE; ACT280; 15LD315; 15LD350; 15LD350 AE; Honda GX270; Kohler CS8.5; Kohler CS8.5 AE; IM359; IM349; IM359 AE; A349 AE; CA340	
23	1	3806067R	Screw			15LD400; 15LD400 AE; ACT280; 15LD315; 15LD350; 15LD350 AE; Honda GX270; Kohler CS8.5; Kohler CS8.5 AE; IM359; IM349; IM359 AE; A349 AE; CA340	
24	1	3914006R	Nut			15LD400; 15LD400 AE; ACT280; 15LD315; 15LD350; 15LD350 AE; Honda GX270; Kohler CS8.5; Kohler CS8.5 AE; IM359; IM349; IM359 AE; A349 AE; CA340	
25	1	N6218600	Screw			15LD400; 15LD400 AE; ACT280;	

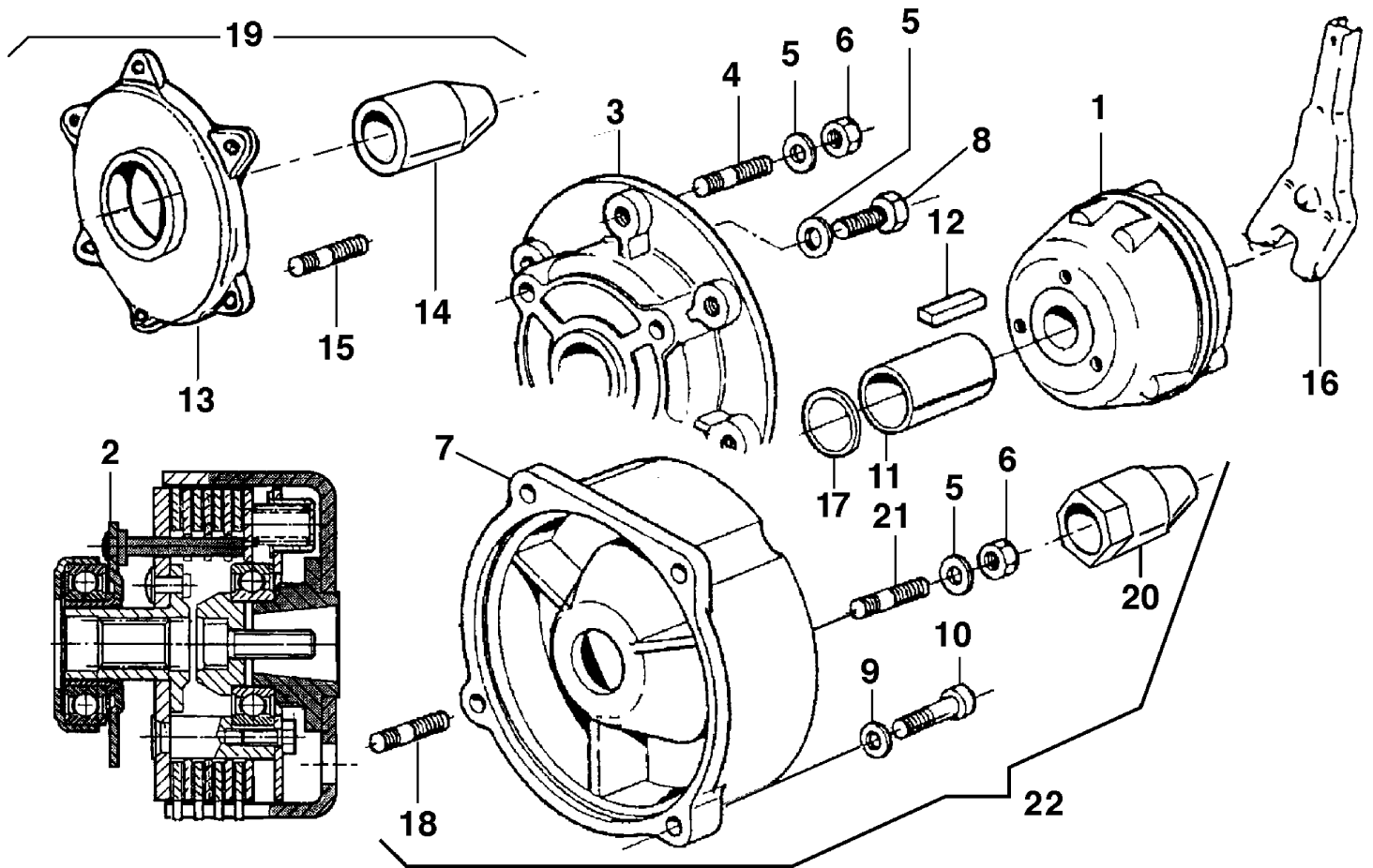
Ref.Nu	Qty	Part number	Description	Validity from	Validity till	Notes	Bulletin
						15LD315; 15LD350; 15LD350 AE; Honda GX270; Kohler CS8.5; Kohler CS8.5 AE; IM359; IM349; IM359 AE; A349 AE; CA340	
26	1	68320024	Hood			15LD400; 15LD400 AE; ACT280; 15LD315; 15LD350; 15LD350 AE; Honda GX270; Kohler CS8.5; Kohler CS8.5 AE; IM359; IM349; IM359 AE; A349 AE; CA340	
26	1	68320026	Hood			Avviamento elettrico; Electric starter	
27	1	F1292601	Main board			Avviamento elettrico; Electric starter; 15LD400; 15LD400 AE; 15LD315; 15LD350; 15LD350 AE; IM359; IM349; IM359 AE; A349 AE; Kohler CS8.5; Kohler CS8.5 AE	
28	1	F1292600	Battery casing			Avviamento elettrico; Electric starter; 15LD400; 15LD400 AE; 15LD315; 15LD350; 15LD350 AE; IM359; IM349; IM359 AE; A349 AE; Kohler CS8.5; Kohler CS8.5 AE	
29	1	N6233000	Screw			Avviamento elettrico; Electric starter; 15LD400; 15LD400 AE; 15LD315; 15LD350; 15LD350 AE; IM359; IM349; IM359 AE; A349 AE; Kohler CS8.5; Kohler CS8.5 AE	
30	1	YN0400530	Grommet			Avviamento elettrico; Electric starter; 15LD400; 15LD400 AE; 15LD315; 15LD350; 15LD350 AE; IM359; IM349; IM359 AE; A349 AE; Kohler CS8.5; Kohler CS8.5 AE	
31	1	YN4361900	Washer			Avviamento elettrico; Electric starter; 15LD400; 15LD400 AE; 15LD315; 15LD350; 15LD350 AE; IM359; IM349; IM359 AE; A349 AE; Kohler CS8.5; Kohler CS8.5 AE	
34	1	F1221601	Box			Honda GX160	
42	1	3806035R	Screw			Honda GX160; Kohler CS8.5; Kohler CS8.5 AE	
43	1	3916006R	Washer			Honda GX160; Kohler CS8.5; Kohler CS8.5 AE	
44	1	3914006R	Nut			Honda GX160; Kohler CS8.5; Kohler CS8.5 AE	
45	1	K4301960	Tire				
46	1	N6302700	Screw				
47	1	F1292605	Electric starter			LGA280	
47	1	68330139	Electric starter			IM359; A349; Kohler CS8.5	
47	1	68330139	Electric starter			15LD315; 15LD350; 15LD400	
48	1	F1292170	Tire				
49	1	3806035R	Screw				
50	1	68330115R	Battery				
51	1	K4804570	Cable				
52	1	YN5901000	Clamp				
53	1	N2540020	Switch				
54	1	N2552250	Warning light				
55	1	N2552370	Plug				
56		-	Not available for this product				



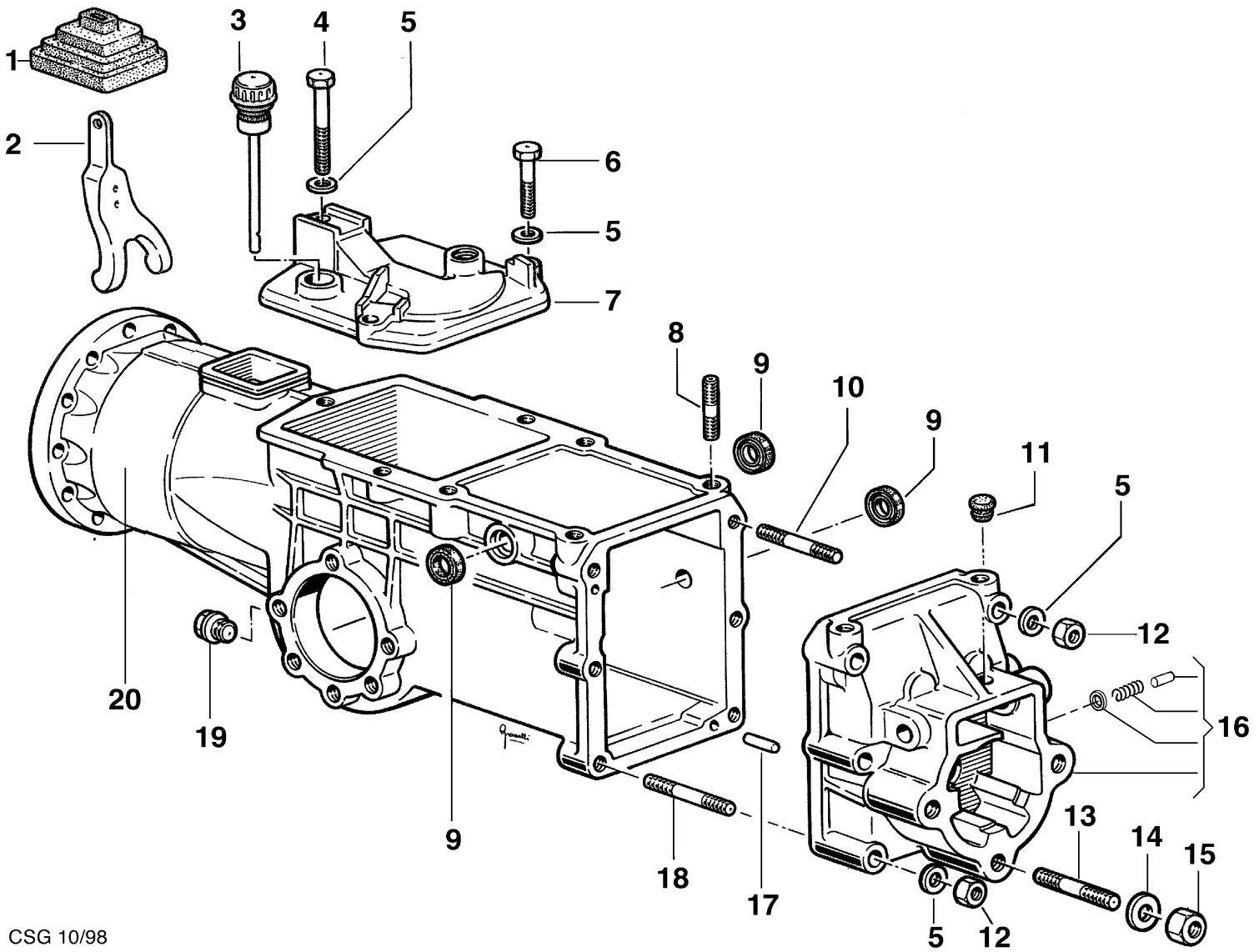
CSG 07/06

Ref.Nu	Qty	Part number	Description	Validity from	Validity till	Notes	Bulletin
1	1	68322106	Hood	SN 15044			
2		-	Not available for this product				
3	1	YN1458020	Nut				
4	1	F1292146	Spacer				
5	1	68320059	Support				
6	1	3914006R	Nut				
7	1	3906016R	Screw				
8	1	68320055	Main board				
9	1	N5267400	Cap				
10	1	006000091R	Nut			15LD400; 15LD400 AE; ACT280; 15LD315; 15LD350; 15LD350 AE; Honda GX270	
10	1	3914010R	Nut			Honda GX160	
11	1	YN4376400	Washer			15LD400; 15LD400 AE; ACT280; 15LD315; 15LD350; 15LD350 AE; Honda GX270	
11	1	3916008R	Washer			Honda GX160	
12	1	3806067R	Screw			Honda GX160	
12	1	YN6335900	Screw			15LD400; 15LD400 AE; 15LD315; 15LD350; 15LD350 AE	
12	1	N6294400	Screw			Honda GX160	
12	1	N6354300	Screw			ACT280; Honda GX270	
13	1	68320057	Support			Honda GX270	
13	1	68320058	Support			Honda GX160	
13	1	F1292175	Support			15LD400; 15LD400 AE	
13	1	68320076	Support			IM359; A349; CA340	
13	1	68320064	Support			15LD315; 15LD350	
13	1	F1292108	Support			ACT280	
13	1	F1292109	Support			ALN330	
14	1	YN4365400	Washer			IM359; IM349; IM359 AE; A349 AE; CA340	
15	1	3806063	Screw			IM359; IM349; IM359 AE; A349 AE; CA340	
16	1	3914010R	Nut			15LD400; 15LD400 AE; ACT280; 15LD315; 15LD350; 15LD350 AE; Honda GX270; IM359; IM349; IM359 AE; A349 AE; CA340	
17	1	320000028R	Nut				
18	1	68320007R	Support	04/2004		15LD400; 15LD400 AE	
18	1	68320044	Support			Honda GX160	
18	1	F1292104	Support			Honda GX270; IM359; IM349; IM359 AE; A349 AE; CA340; 15LD315; 15LD350; 15LD350 AE; ACT280	
19	1	F0752170	Buffer				
20	1	YF0752159	Silent block				
21	1	YN0400530	Grommet			IM359; IM349; IM359 AE; A349 AE; CA340	
22	1	3916008R	Washer			IM359; IM349; IM359 AE; A349 AE; CA340	
23	1	3806067R	Screw			IM359; IM349; IM359 AE; A349 AE; CA340	
24	1	3914006R	Nut			IM359; IM349; IM359 AE; A349 AE; CA340	
25	1	N6218600	Screw			IM359; IM349; IM359 AE; A349 AE; CA340	
26	1	68320026	Hood			Avviamento elettrico; Electric starter	
26	1	68320024	Hood			IM359; IM349; IM359 AE; A349 AE; CA340	
27	1	F1292601	Main board			Avviamento elettrico; Electric starter; 15LD400; 15LD400 AE; 15LD315; 15LD350; 15LD350 AE; IM359; IM349; IM359 AE, A349 AE	
28	1	F1292600	Battery casing			Avviamento elettrico; Electric starter; 15LD400; 15LD400 AE; 15LD315; 15LD350; 15LD350 AE; IM359; IM349; IM359 AE, A349 AE	
29	1	N6233000	Screw			Avviamento elettrico; Electric starter; 15LD400; 15LD400 AE; 15LD315; 15LD350; 15LD350 AE; IM359; IM349; IM359 AE, A349 AE	

Ref.Nu	Qty	Part number	Description	Validity from	Validity till	Notes	Bulletin
30	1	YN0400530	Grommet			Avviamento elettrico; Electric starter; 15LD400; 15LD400 AE; 15LD315; 15LD350; 15LD350 AE; IM359; IM349; IM359 AE, A349 AE	
31	1	YN4361900	Washer			Avviamento elettrico; Electric starter; 15LD400; 15LD400 AE; 15LD315; 15LD350; 15LD350 AE; IM359; IM349; IM359 AE, A349 AE	
32	2	3806035R	Screw				
34	1	F1221601	Box			Honda GX160	
42	1	3806035R	Screw			Honda GX160	
43	1	3916006R	Washer			Honda GX160	
44	1	3914006R	Nut			Honda GX160	
45	1	K4301960	Tire				
46	1	N6302700	Screw				
47	1	68330139	Electric starter			15LD315; 15LD350; 15LD400	
47	1	F1292605	Electric starter			LGA280	
47	1	68330139	Electric starter			IM359; A349;	
48	1	F1292170	Tire				
49	1	YN6234500	Screw	SN 15044			
50	1	68330115R	Battery				
51	1	K4804570	Cable				
52	1	YN5901000	Clamp				
53	1	N2540020	Switch				
54	1	N2552250	Warning light				
55	1	N2552370	Plug				
56		-	Not available for this product				
57	1	F1292206	Support	SN 15044			
58	1	N2400500	Washer	SN 15044			

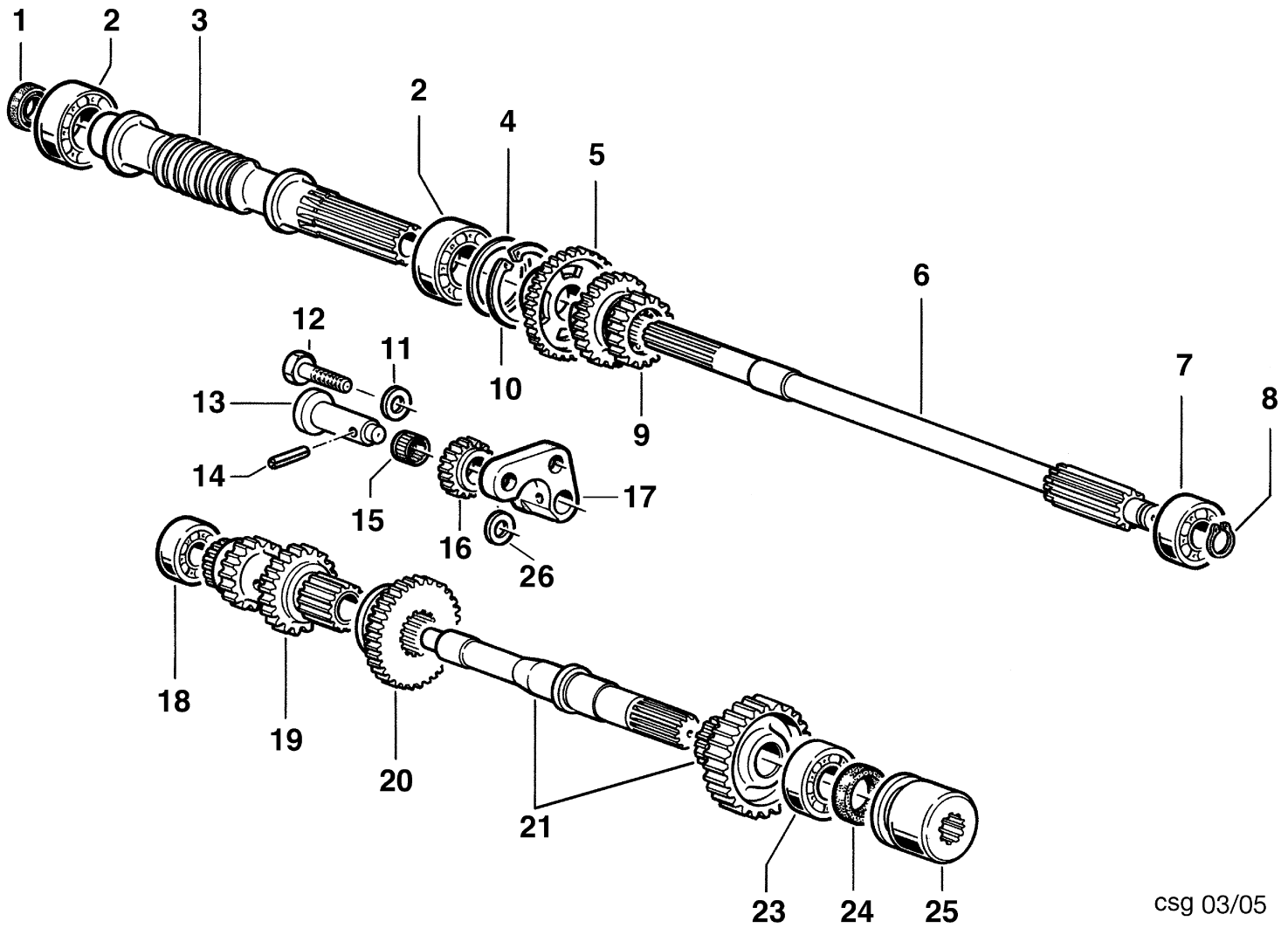


Ref.Nu	Qty	Part number	Description	Validity from	Validity till	Notes	Bulletin
1	1	YF1200016	Clutch			Honda GX160	
1	1	YF1200032	Clutch				
1	1	YF1200003	Clutch			IM359; A349; CA340	
1	1	F1200004	Clutch			ALN330; 15LD315; A220; A230	
2	1	YF1200006	Multiple disk clutch			Honda GX270; Kohler CS8.5	
2	1	F1200035	Multiple disk clutch			Kohler CS10	
2	1	YF1090002	Multiple disk clutch			15LD400; 15LD440; 15LD400 AE; (da- from 03/2004); ACT280; 6LD400; 6LD400 AE; 6LD435	
2	1	F1090007	Multiple disk clutch			Yanmar L70; Yanmar L100; 15LD350; 15LD400 AE; 15LD400; 15LD440; (fino-until 03/2004)	
3	1	68310038A	Flange			Honda GX160	
3	1	F1050027G	Flange			Honda GC160; B&S; Tecumseh	
4	1	YN3812500	Stud			Honda GX160	
5	1	YN4365400	Washer			Honda GX270; Kohler CS8.5; 15LD400; 15LD440; 15LD400 AE; (da- from 03/2004); Honda GX160	
6	1	320000028R	Nut			Honda GX270; Kohler CS8.5; 15LD400; 15LD440; 15LD400 AE; (da- from 03/2004); Honda GX160	
7	1	68320117A	Flange			Honda GX270; Kohler CS8.5; 15LD400; 15LD440; 15LD400 AE; (da- from 03/2004);	
8	1	YN6243980	Screw			Honda GX160	
9	1	YN4376400	Washer			Honda GX270; Kohler CS8.5; 15LD400; 15LD440; 15LD400 AE; (da- from 03/2004);	
10	1	N6309790	Screw			Honda GX270; Kohler CS8.5; 15LD400; 15LD440; 15LD400 AE; (da- from 03/2004);	
11	1	F1050036	Spacer			Frizione vecchia; Old clutch; Honda GX270; Kohler CS8.5	
11	1	F1050028	Spacer			Honda GX160; 15LD400 AE; 15LD400; 15LD440; (fino-until 03/2004)	
12	1	YN0643410	Key			Honda GX160	
12	1	N0648090	Key			Frizione monoblocco; Clutch single- block; Honda GX270; Kohler CS8.5	
12	1	N0648080	Key			Frizione con distanziale; Clutch with spacer; Honda GX270; Kohler CS8.5	
13	1	F1210001	Spacer			ALN330; 15LD315; A220; A230; Yanmar L70; Yanmar L100; 15LD350; 15LD400 AE; 15LD400; 15LD440; (fino 03/2004)	
14	1	F1210002	Spacer			ALN330; 15LD315; A220; A230; Yanmar L70; Yanmar L100; 15LD350; 15LD400 AE; 15LD400; 15LD440; (fino 03/2004)	
15	1	N3815300	Stud			Motori senza distanziale; Engines without spacer	
15	1	K8236004	Stud			ALN330; 15LD315; A220; A230; Yanmar L70; Yanmar L100; 15LD350; 15LD400 AE; 15LD400; 15LD440; (fino 03/2004)	
16	1	YF0750011	Lever				
17	1	N5002870	Thickness			Honda GX160	
18	1	N3815300	Stud			15LD400; 15LD440; 15LD400 AE; (da- from 03/2004)	
19	1	P1200020	Spacer unit			ALN330; 15LD315; A220; A230; Yanmar L70; Yanmar L100; 15LD350; 15LD400 AE; 15LD400; 15LD440; (fino-until 03/2004)	
20	1	F1290007B	Spacer			15LD400; 15LD440; 15LD400 AE; (da- from 03/2004)	
21	1	N3815300	Stud			15LD400; 15LD440; 15LD400 AE; (da- from 03/2004); Kohler CS8.5	
21	1	YN3812500	Stud			Honda GX270; Kohler CS8.5	
22	1	P1200021	Spacer unit			15LD400; 15LD440; 15LD400 AE; (da- from 03/2004)	



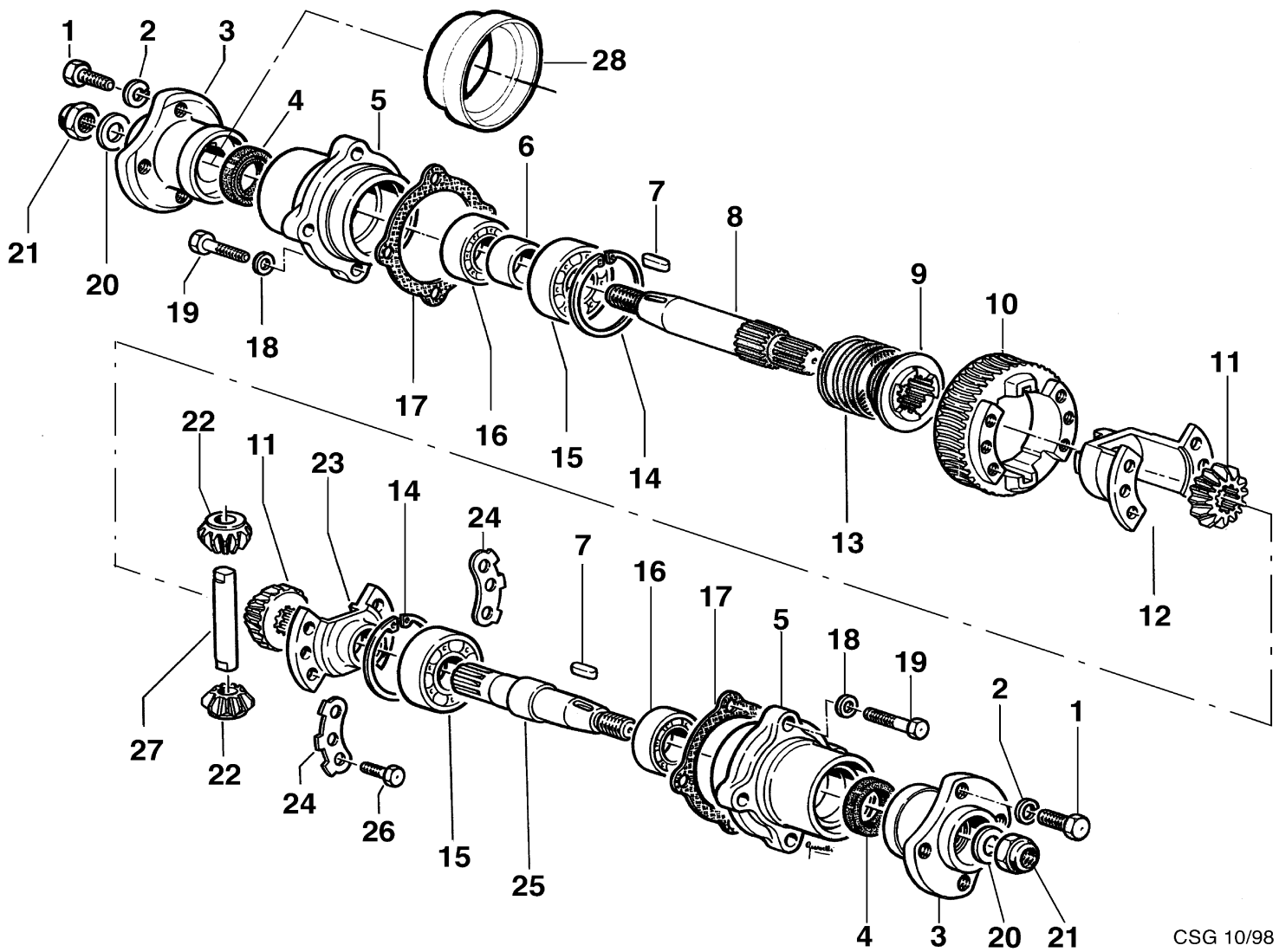
CSG 10/98

Ref.Nu	Qty	Part number	Description	Validity from	Validity till	Notes	Bulletin
1	1	YF0751646	Bellows				
2	1	YF0750011	Lever				
3	1	F1290819	Cap				
4	1	N6294400	Screw				
5	1	YN4365400	Washer				
6	1	3806074R	Screw				
7	1	F1290818	Cover				
8	1	YN3812500	Stud				
9	1	YN0203000	Seal ring				
10	1	N3825400	Stud				
11	1	YF0750835	Cap				
12	1	N1458800	Nut				
13	1	N3861500	Stud				
14	1	YN4387700	Washer				
15	1	YN1470500	Nut				
16	1	YF1290817	Set cover				
17	1	YN5124300	Pin				
18	1	N3825750	Stud				
19	1	YN5254000	Oil cap				
20	1	68320135	Speed-change gear box				



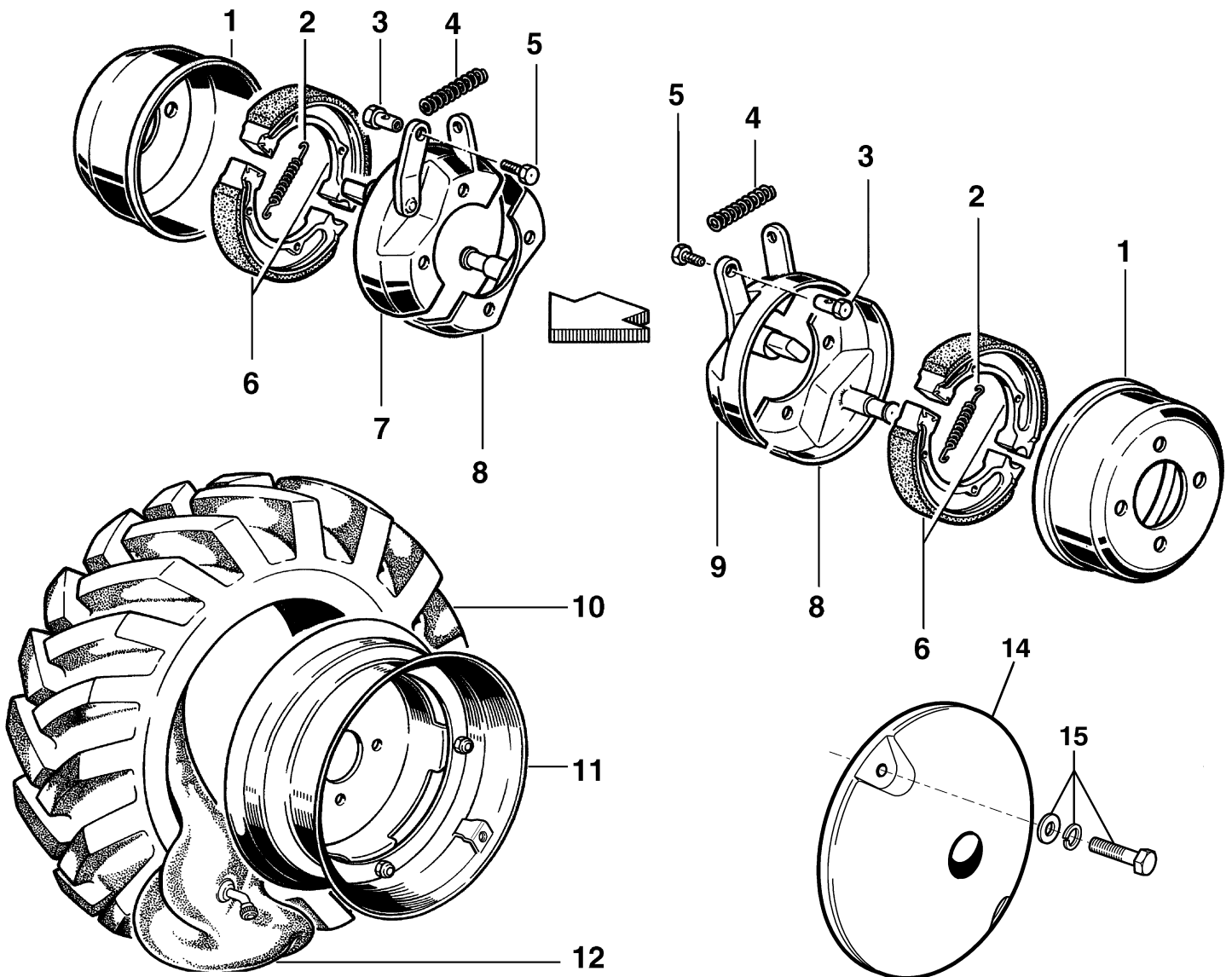
csg 03/05

Ref.Nu	Qty	Part number	Description	Validity from	Validity till	Notes	Bulletin
1	1	YN0204750	Gasket				
2	1	N1270751	Bearing				
3	1	F1290800	Shaft				
4	1	N5010200	Washer				
5	1	YF1290812	Sprocket				
6	1	YF1290811	Shaft				
7	1	N1257700	Bearing				
8	1	3024015	Seeger				
9	1	YF1290813	Gear (Sliding)				
10	1	N0136900	Seeger				
11	1	005000343	Washer				
12	1	N6327500	Screw				
13	1	F1290803	Pin				
14	1	N5115000	Cotter pin				
15	1	3037026R	Roller cage				
16	1	YF1290804	Sprocket				
17	1	F1290807	Support				
18	1	N1251500	Bearing				
19	1	F1290810	Gear				
20	1	YF1290805	Sprocket				
21	1	R1290814	Shaft (Complete)				
23	1	YN1263701	Bearing				
24	1	YN0207300	Seal ring				
25	1	YF1290816	Sleeve				
26	1	N5001900	Washer				

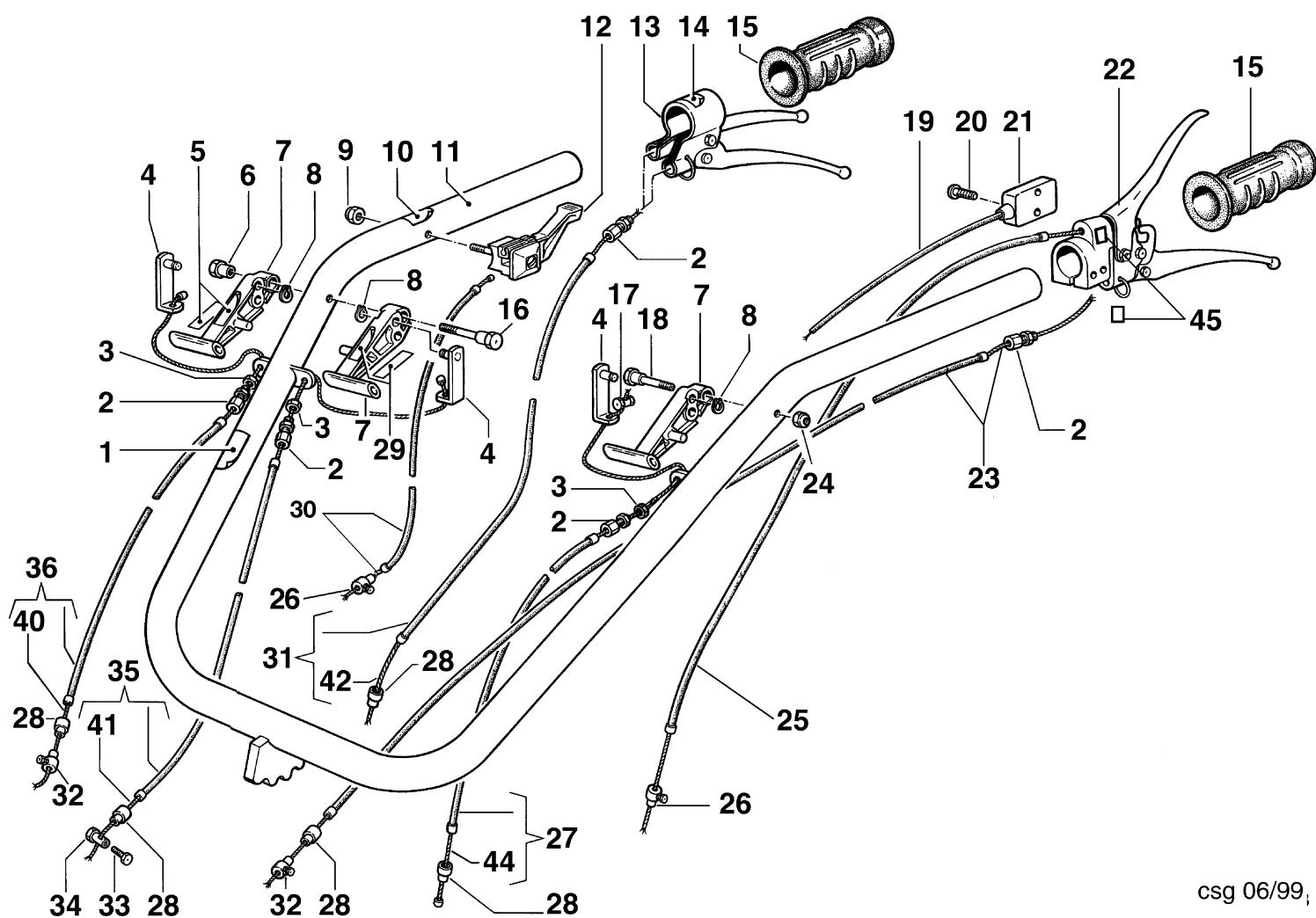


CSG 10/98

Ref.Nu	Qty	Part number	Description	Validity from	Validity till	Notes	Bulletin
1	1	N6322000	Screw				
2	1	3819014R	Grower				
3	1	YF1290211	Wheel hub				
4	1	YN0209720	Ring				
5	1	F1290209	Support				
6	1	F1290210	Spacer				
7	1	YN0646800	Key				
8	1	YF1290207	Shaft			DX; RIGHT	
9	1	F1290201	Sleeve				
10	1	YF1290205	Sprocket				
11	1	F1290203	Sprocket				
12	1	F1290212	Support				
13	1	N3138800	Spring				
14	1	028200031	Seeger				
15	1	N1272501	Bearing				
16	1	YN1270701	Bearing				
17	1	-	Not available for this product				
18	1	3819013R	Grower				
19	1	322000001	Screw				
20	1	N4403000	Grower				
21	1	YN1479800	Nut				
22	1	F1290202	Sprocket				
23	1	F1290213	Support				
24	1	F1290204	Plate				
25	1	YF1290208	Shaft			SX; LEFT	
26	1	N6254500	Screw				
27	1	F1290206	Pin				
28	1	F1290227	Guard				

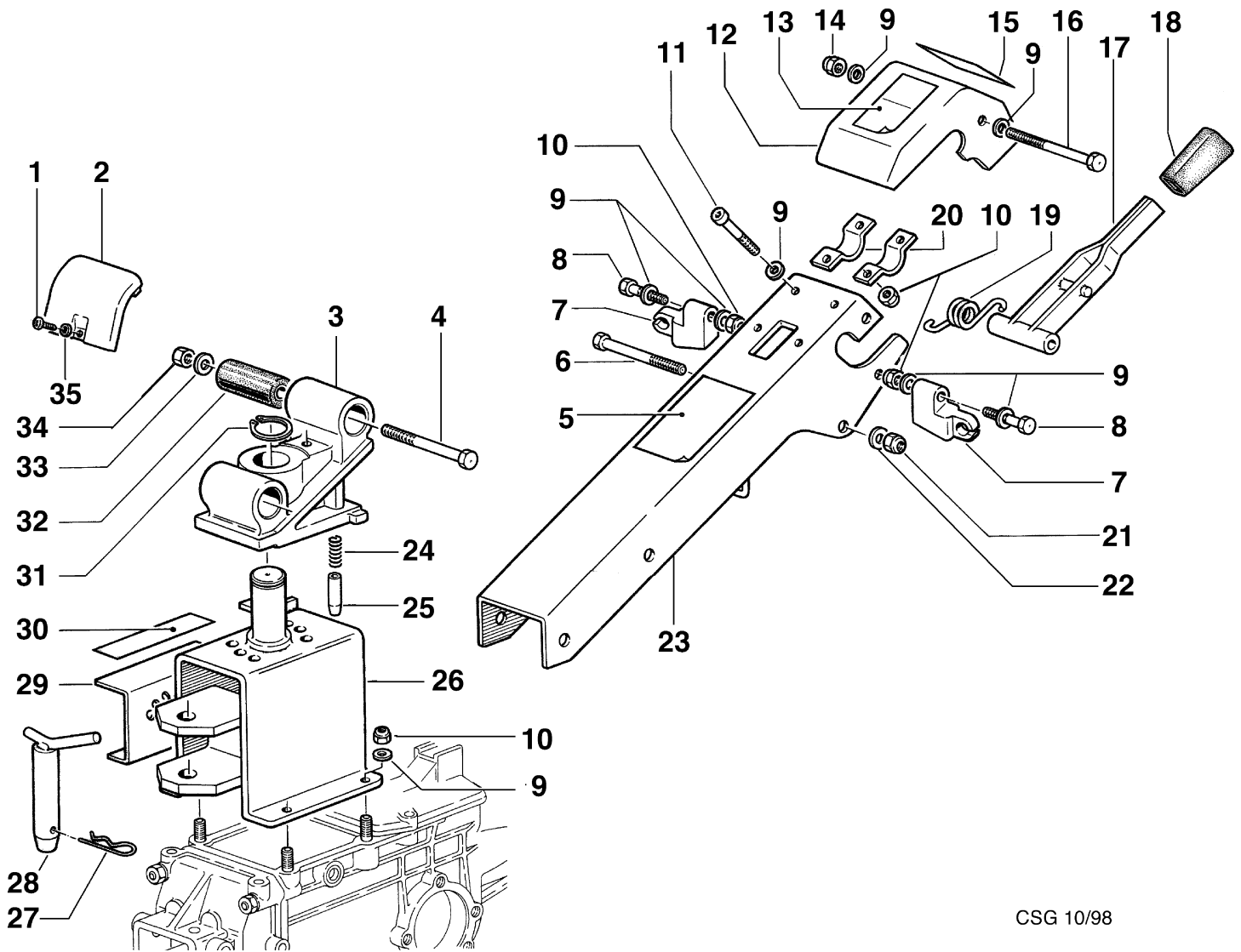


Ref.Nu	Qty	Part number	Description	Validity from	Validity till	Notes	Bulletin
1	1	N2382700	Cable reel				
2	1	YN3105100	Spring				
3	1	YF1290225	Clamp				
4	1	N3101050	Spring				
5	1	301000042	Screw				
6	1	YN2362700	Brake shoe				
7	1	F1290223	Half-cable reel				
8	1	YF1290220	Half-cable reel				
9	1	F1290224	Half-cable reel				
10	1	N4853500	Tire			5.00-10	
10	1	N4852000A	Tire			4.00-10	
11	1	69200014	Rim			4.00/5.00-10	
12	1	YN4882500	Inner tube			5.00-10	
12	1	N4881500	Inner tube			4.00-10	



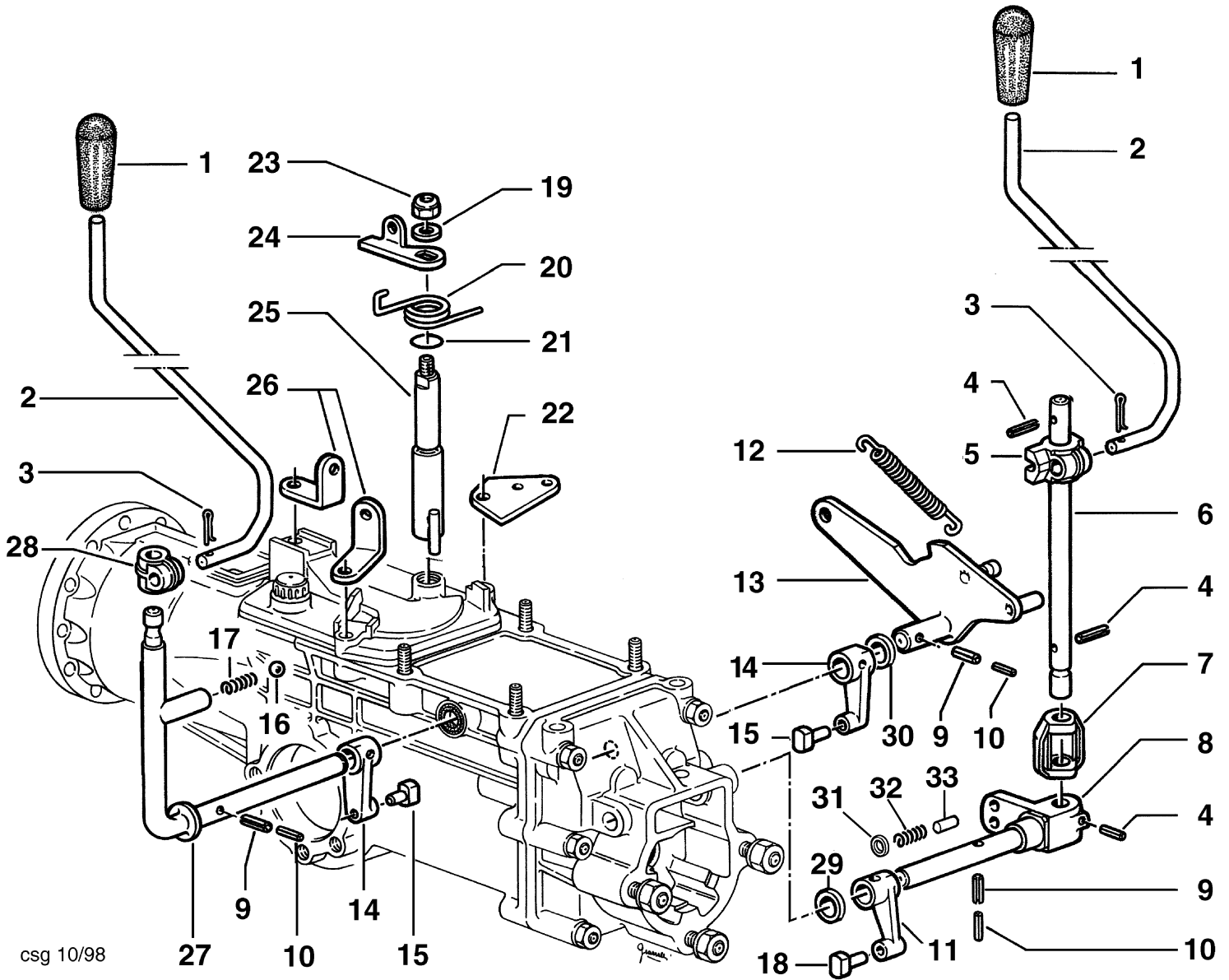
csg 06/99,

Ref.Nu	Qty	Part number	Description	Validity from	Validity till	Notes	Bulletin
1		-	Not available for this product				
2	1	YN5801000	Adjuster assy				
3	1	3911008R	Nut				
4	1	F1291619	Bracket				
5		-	Not available for this product				
6	1	F1291617	Bushing				
7	1	F1291614	Lever				
8	1	N1734000	Ring				
9	1	3914006R	Nut				
10		-	Not available for this product				
11	1	68320009	Handle kit				
12	1	YN2803650	Fuel control				
13	1	N2806200	Handle				
14		-	Not available for this product				
15	1	YN2847300	Knob				
16	1	F1291616	Pin				
17	1	N5901500	Clamp				
18	1	F1291615	Pin				
19	1	F1182601	Cable			Motori benzina; Gasoline engines	
20	1	N6182150	Screw			Motori benzina; Gasoline engines	
21	1	N2542360	Switch			Motori benzina; Gasoline engines	
22	1	N2806110	Handle				
23	1	N5488035A	Transmission				BT12-003-11/10
24	1	3914010R	Nut				
25	1	N5477050	Transmission			15LD400; Yanamr L70; Yanamr L100	
25	1	N5476600	Transmission			Motori diesel; Diesel engines	
26	1	YN5901000	Clamp				
26	1	F1300004	Clamp			Honda GX270; Vanguard; Kohler CS8.5	
27	1	N5481100	Transmission				
28	1	YN5852100A	Clamp				
29		-	Not available for this product				
30	1	N5467270	Transmission			15LD315; 15LD350; IM350; IM359; ACT280; 6LD400; A349	
30	1	N5467270	Transmission			ALN330; CA340; Honda GX270; Honda GX160; Vanguard; Kohler CS8.5	
30	1	N5464160	Transmission			15LD400; Yanamr L70; Yanamr L100	
31	1	68330195	Transmission				
32	1	YN5901600	Clamp				
33	1	301000042	Screw				
34	1	YF1290225	Clamp				
35	1	68330191	Transmission				
36	1	68330192	Transmission				
40	1	N5632500	Rope				
41	1	N5632500	Rope				
42	1	N5638360	Rope				
44	1	N5481100	Transmission				
45		-	Not available for this product				



CSG 10/98

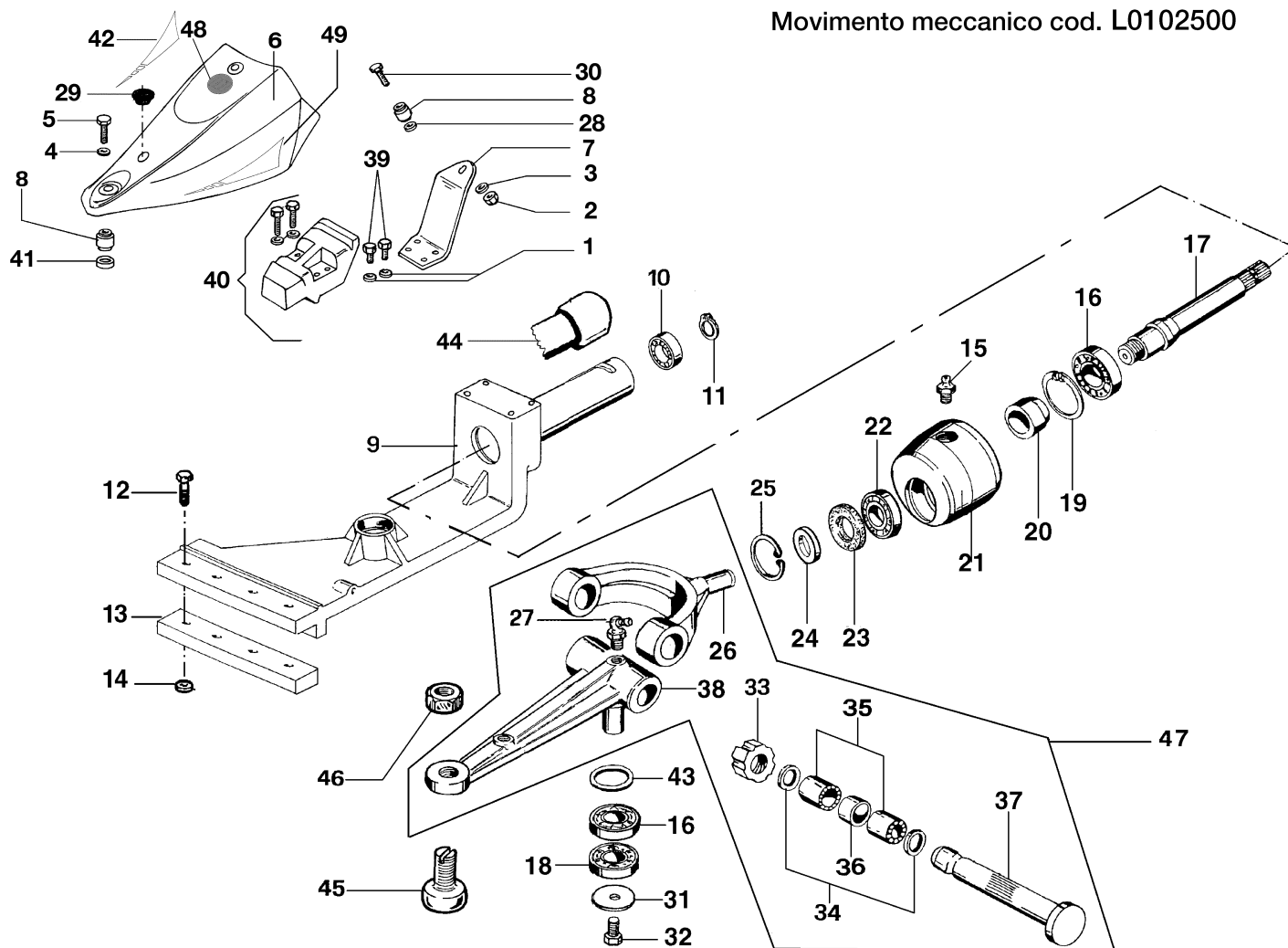
Ref.Nu	Qty	Part number	Description	Validity from	Validity till	Notes	Bulletin
1	1	N6192200	Screw				
2	1	F1291651C112	Cover				
3	1	R0000114	Grip-end				
4	1	N6407550	Screw				
5		-	Not available for this product				
6	1	YN6361500	Screw				
7	1	YF1255009B	Support				BT12-001-10/09
8	1	3806067R	Screw				
9	1	3916008R	Washer				
10	1	N1458800	Nut				
11	1	N6289250	Screw				
12	1	68240022	Cover				
13		-	Not available for this product				
14	1	3914010R	Nut				
15		-	Not available for this product				
16	1	N6306500	Screw				
17	1	YF1291636	Lever				
18	1	YN2840480	Knob				
19	1	YF1291634B	Spring				
20	1	YF1151601	Clamp				
21	1	3914014R	Nut				
22	1	3916010R	Washer				
23	1	F1291642	Handlebar rod				
24	1	K3503380	Spring				
25	1	YK3502650	Shutter				
26	1	68320010ER	Column support				
27	1	N5148800	Cotter pin				
28	1	F0751647	Pin				
29	1	YF1291627B	Selector switch				
30		-	Not available for this product				
31	1	N0126400	Seeger				
32	1	N4924200	Silent block				
33	1	N4384360	Washer				
34	1	YN1470500	Nut				
35	1	3916005R	Sealing washer				



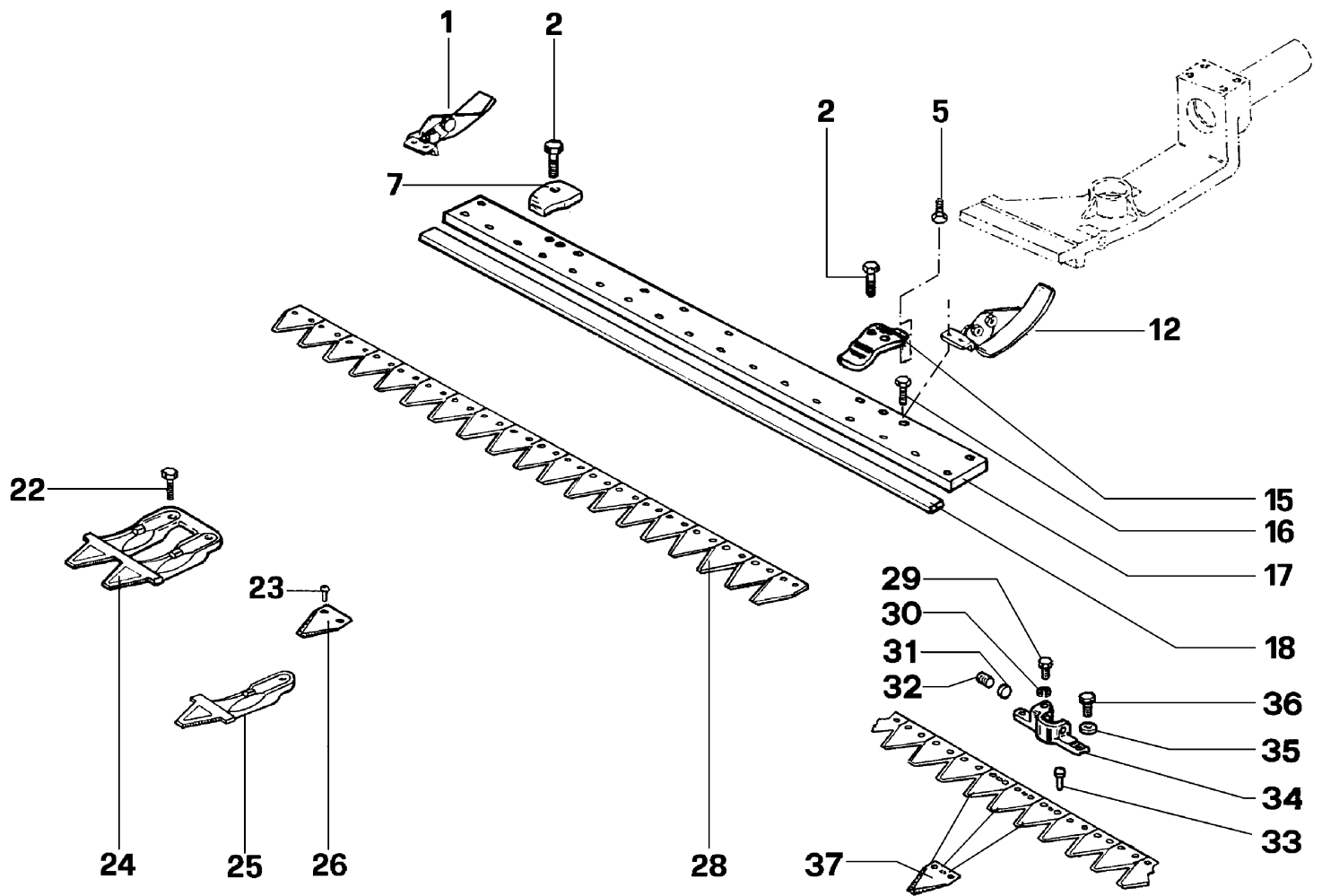
csg 10/98

Ref.Nu	Qty	Part number	Description	Validity from	Validity till	Notes	Bulletin
1	1	YN3753600	Knob				
2	1	YF1291641	Handlebar				
3	1	YN1054900	Split pin				
4	1	N5113800	Pin				
5	1	YF1291633	Support				
6	1	YF1291637	Lever				
7	1	YF1241614	Shoe				
8	1	F1291613	Pin				
9	1	YN5125500	Pin				
10	1	YN5109300	Pin				
11	1	YF1051700	Lever				
12	1	YN3118060	Spring				
13	1	F1291612	Cam				
14	1	YF1291603	Lever				
15	1	YF1291604	Sliding block				
16	1	YN4745400	Ball				
17	1	YN3104250	Spring				
18	1	F1050831	Sliding block				
19	1	3916008R	Washer				
20	1	F1291602	Spring				
21	1	N0317900	Ring				
22	1	F1291607	Plate				
23	1	N1458800	Nut				
24	1	F1291606	Lever				
25	1	F1291600	Cam				
26	1	F1291605	Bracket				
27	1	YF1291632	Lever				
28	1	YF1061633	Fix plate (Handlebar)				
29	1	N4394700	Thickness				
30	1	K8491008	Thickness				
31	1	N0281400	Ring				
32	1	N3101020	Spring				
33	1	YF1291661	Cap				

Movimento meccanico cod. L0102500

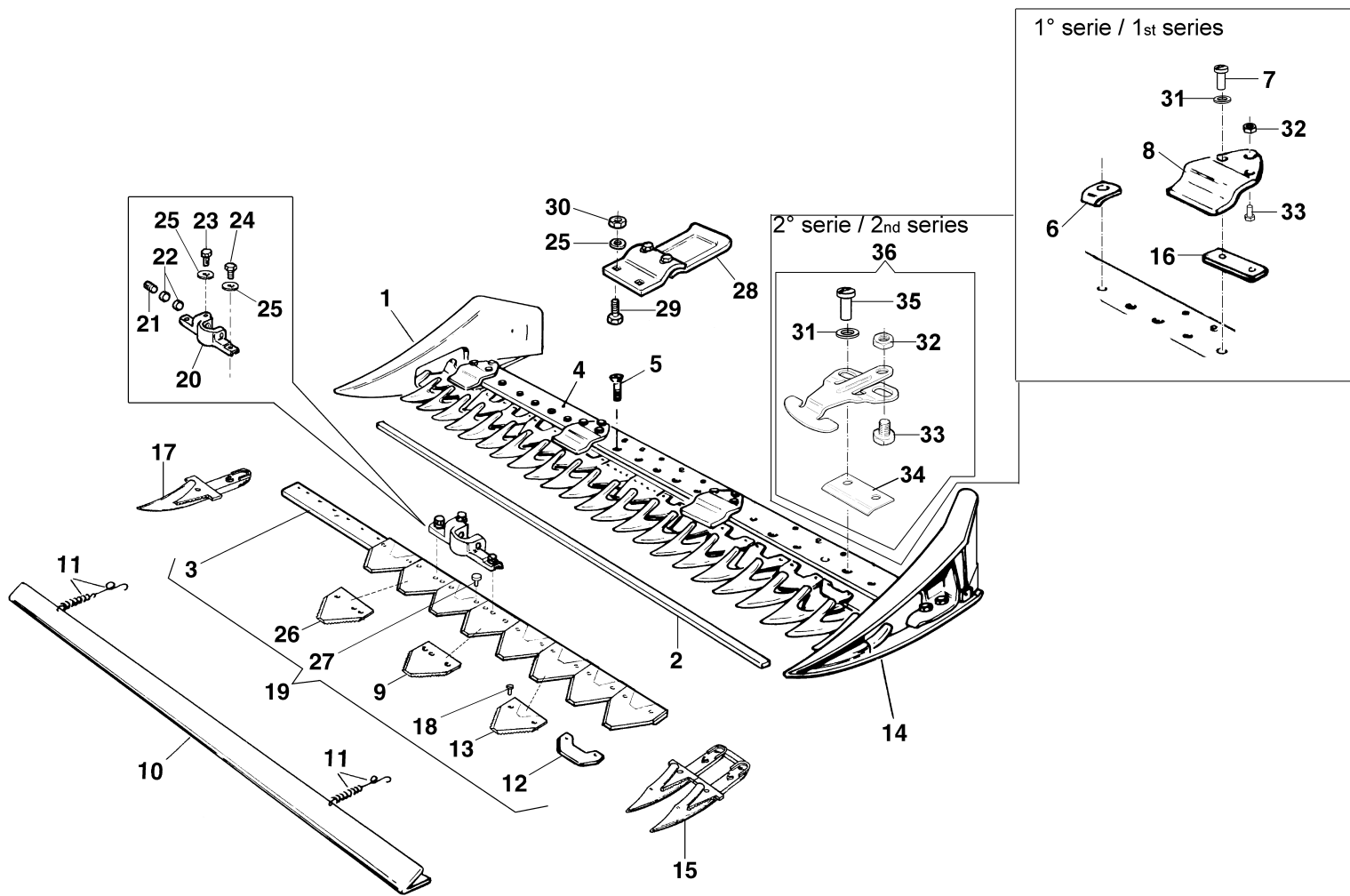


Ref.Nu	Qty	Part number	Description	Validity from	Validity till	Notes	Bulletin
1	1	3819013R	Grower				
2	1	YN1470200	Nut				
3	1	3916012	Washer				
4	1	3916012	Washer				
5	1	YN6402600	Screw				
6	1	PA001254	Hood				
7	1	YF1303126	Support				
8	1	N4924000	Silent block				
9	1	F1073358	Support				
10	1	YN1263201	Bearing				
11	1	3024020R	Seeger				
12	1	YN6335900	Screw				
13	1	L0081100	Washer				
14	1	YN1463650	Nut				
15	1	YN2605600	Nipple				
16	1	YN1271100	Bearing				
17	1	YF1073106	Shaft				
18	1	N1270400	Bearing				
19	1	YN0136800	Seeger				
20	1	YF1073145	Spacer				
21	1	YF1073105	Floating head				
22	1	N1258301	Bearing				
23	1	YN0207500	Ring				
24	1	YN4429200	Washer				
25	1	YN0130000	Seeger				
26	1	F1073513	Clip				
27	1	YN2605600	Nipple				
28	1	3916012	Washer				
29	1	YN5265900	Cap				
30	1	N6399710	Screw				
31	1	YF1073372	Washer				
32	1	N6320500	Screw				
33	1	N2101600	Ring nut				
34	1	N5002850	Spacer				
35	1	YN1261350	Bearing				
36	1	YF1073190	Spacer				
37	1	F1073191	Pin				
38	1	YF1073375	Connecting rod				
39	1	3806063	Screw				
40	1	L0105500	Set (Counterweight) Mechanical movement				
41	1	F1303133	Spacer				
42	-	-	Not available for this product				
43	1	YN5005400	Spacer				
44	1	L0038100	Spacer				
45	1	YF1073260	Pin				
46	1	N1474500	Nut				
47	1	P0001289	Support kit				
48	-	-	Not available for this product				
49	-	-	Not available for this product				



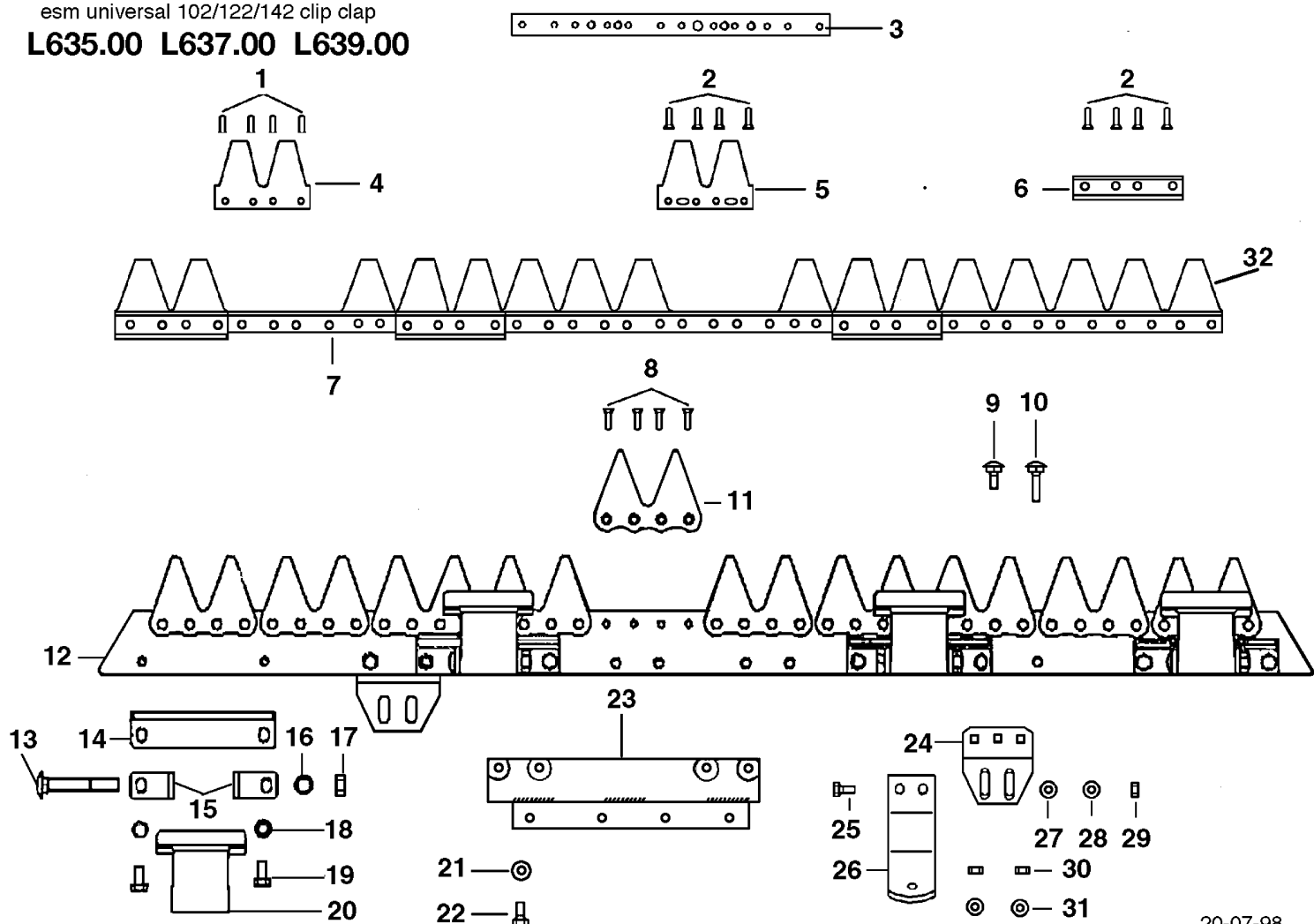
barra speciale attacco registrabile

Ref.Nu	Qty	Part number	Description	Validity from	Validity till	Notes	Bulletin
1	1	YF1303153	Sliding block	10/2000			
2	1	YN6332800	Screw				
5	1	N6245800	Screw				
7	1	YF0582687	Plate				
12	1	YF1303153	Sliding block	10/2000			
15	1	F1113112	Press blade (Long)				
16	1	N6321250	Screw	10/2000			
17	1	F1303118	Plate			1270 mm	
17	1	F1303119	Plate			1400 mm	
17	1	F1303116	Plate			950 mm	
17	1	F1303117	Plate			1150 mm	
18	1	69220017	Rod			1150 mm	
18	1	F1073220	Slide			1400 mm	
18	1	F0591593	Slide			1270 mm	
18	1	F0712027	Slide			950 mm	
22	1	N6322000	Screw				
23	1	YN0886600	Rivet				
24	1	F1113114	Tooth (Double)				
25	1	F1113114	Tooth (Double)				
26	1	F1073216R	Blade				
28	1	YF1073349	Blade			950 mm SP	
28	1	YF1073388	Blade			1400 mm SP	
28	1	YF1073276	Blade			1150 mm SP	
28	1	YF1073277	Blade			1270 mm SP	
29	1	YN6262200	Screw				
30	1	3819013R	Grower				
31	1	YF1073364	Valve				
32	1	N6433900	Screw				
33	1	F1073261	Rivet				
34	1	YF1073363B	Clutch driver			Per barra SP; For SP bar	
35	1	3819013R	Grower				
36	1	3806063	Screw				
37	1	YF1073273	Blade				



Ref.Nu	Qty	Part number	Description	Validity from	Validity till	Notes	Bulletin
1	1	69220015	Shoe			DX; RIGHT	
2	1	69220017	Rod				
3	1	69220023	Rod				
4	1	F1303117	Plate				
5	15	YN6325400	Screw				
6	4	69220018	Support				BT12-010-07/14
7	8	3906099	Screw				BT12-010-07/14
8	4	69220047	Pressblade kit				BT12-010-07/14
9	1	F1073377	Blade				
10	1	69220020	Guard				
11	2	69220022	Spring				
12	13	F1073317	Plate				
13	13	YF0582091	Blade				
14	1	69220016	Shoe			SX; LEFT	
15	11	F0582688	Tooth (Double)				
16	12	F1073321	Spacer				BT12-010-07/14
17	1	F0582738	Tooth (Single)				
18	28	YN0886600	Rivet				
19	1	YF1073384	Blade				
20	1	YF1073376B	Clutch driver				
21	1	N6433900	Screw				
22	2	YF1073364	Valve				
23	1	YN6262200	Screw				
24	2	3806063	Screw				
25	7	3819013R	Grower				
26	1	F1073378R	Blade				
27	2	F1073261	Rivet				
28	2	69220024	Complete slide				
29	8	3806070R	Screw				
30	8	32000028R	Nut				
31	8	3916010R	Washer				BT12-010-07/14
32	4	N1462800	Nut				BT12-010-07/14
33	4	N6314900	Screw				BT12-010-07/14
34	4	LS621102	Support				BT12-010-07/14
35	8	N6333300	Screw				BT12-010-07/14
36	4	69220047	Pressblade kit				BT12-010-07/14

esm universal 102/122/142 clip clap
L635.00 L637.00 L639.00

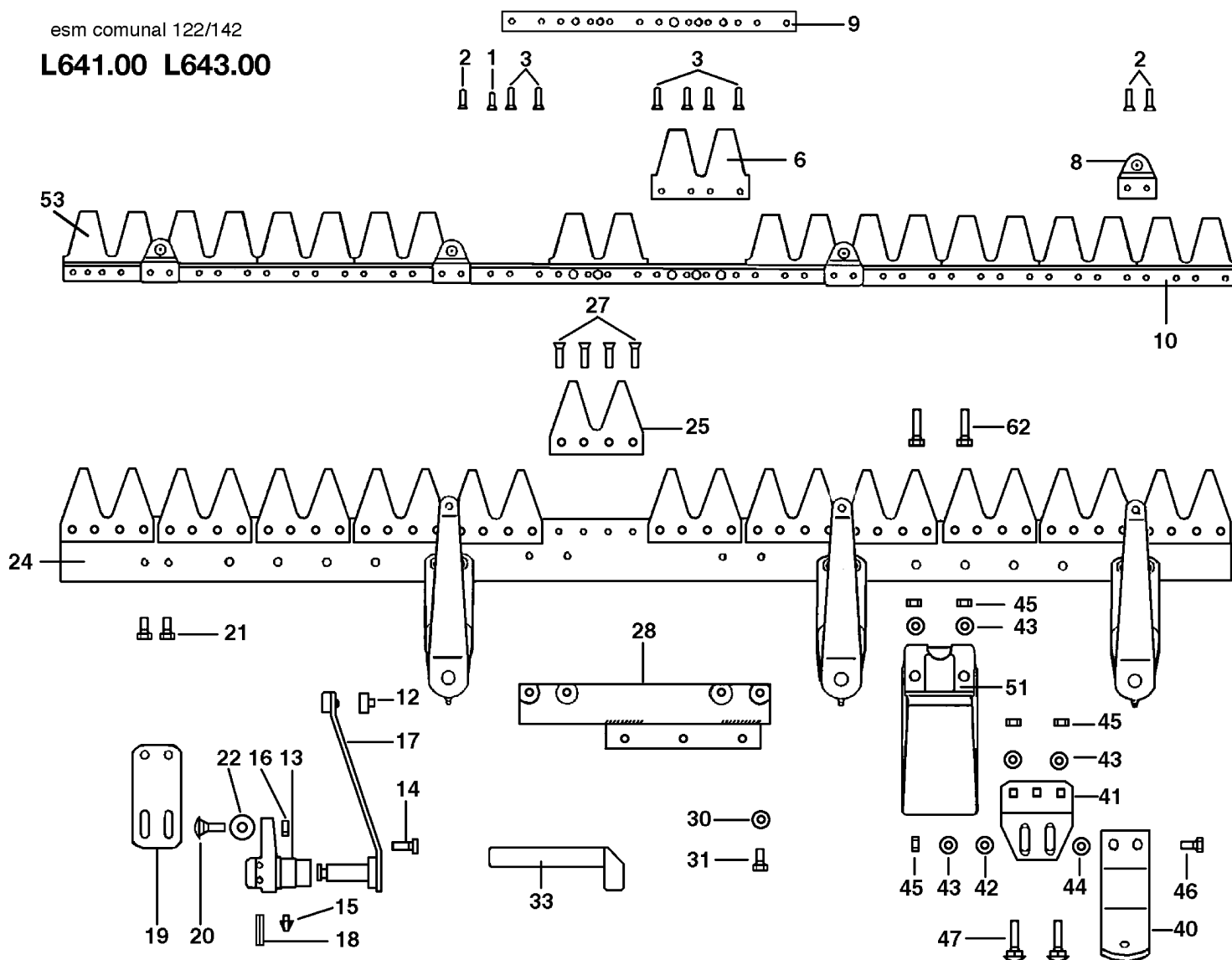


20-07-98

Ref.Nu	Qty	Part number	Description	Validity from	Validity till	Notes	Bulletin
1	1	R1504705	Rivet				
2	1	R1504706	Rivet				
3	1	F1073501	Plate				
4	1	F1073451	Shear blade (Double)				
5	1	F1073452	Shear blade (Double)				
6	1	F1073453	Slide				
7	1	F1073502	Back (Blade)			102 cm	
7	1	F1073468	Shear blade			122 cm	
7	1	F1073504	Back (Blade)			142 cm	
8	1	N0892500	Rivet				
9	-		Not available for this product				
10	-		Not available for this product				
11	1	F1073456	Tooth (Double)				
12	1	F1073507	Back (Bar)			142 cm	
12	1	F1073506	Back (Bar)			122 cm	
12	1	F1073505	Back (Bar)			102 cm	
13	1	F1073462	Screw				
14	1	F1073458	Plate				
15	1	F1073459	Bracket				
16	-		Not available for this product				
17	1	N1464800	Nut				
18	-		Not available for this product				
19	1	3806063	Screw				
20	1	F1073457	Pusher				
21	1	YN4365400	Washer				
22	1	YN6254600	Screw				
23	1	F1073401	Connection plate				
24	1	F1073430	Attachment (Sole)				
25	1	3806067R	Screw				
26	1	F1073428	Sole				
27	1	3916008R	Washer				
28	1	YN4365400	Washer				
29	1	R1504723	Nut				
30	-		Not available for this product				
31	-		Not available for this product				
32	1	F1073469	Shear blade			142 cm	
32	1	F1073468	Shear blade			122 cm	
32	1	YF1073467	Shear blade			102 cm	

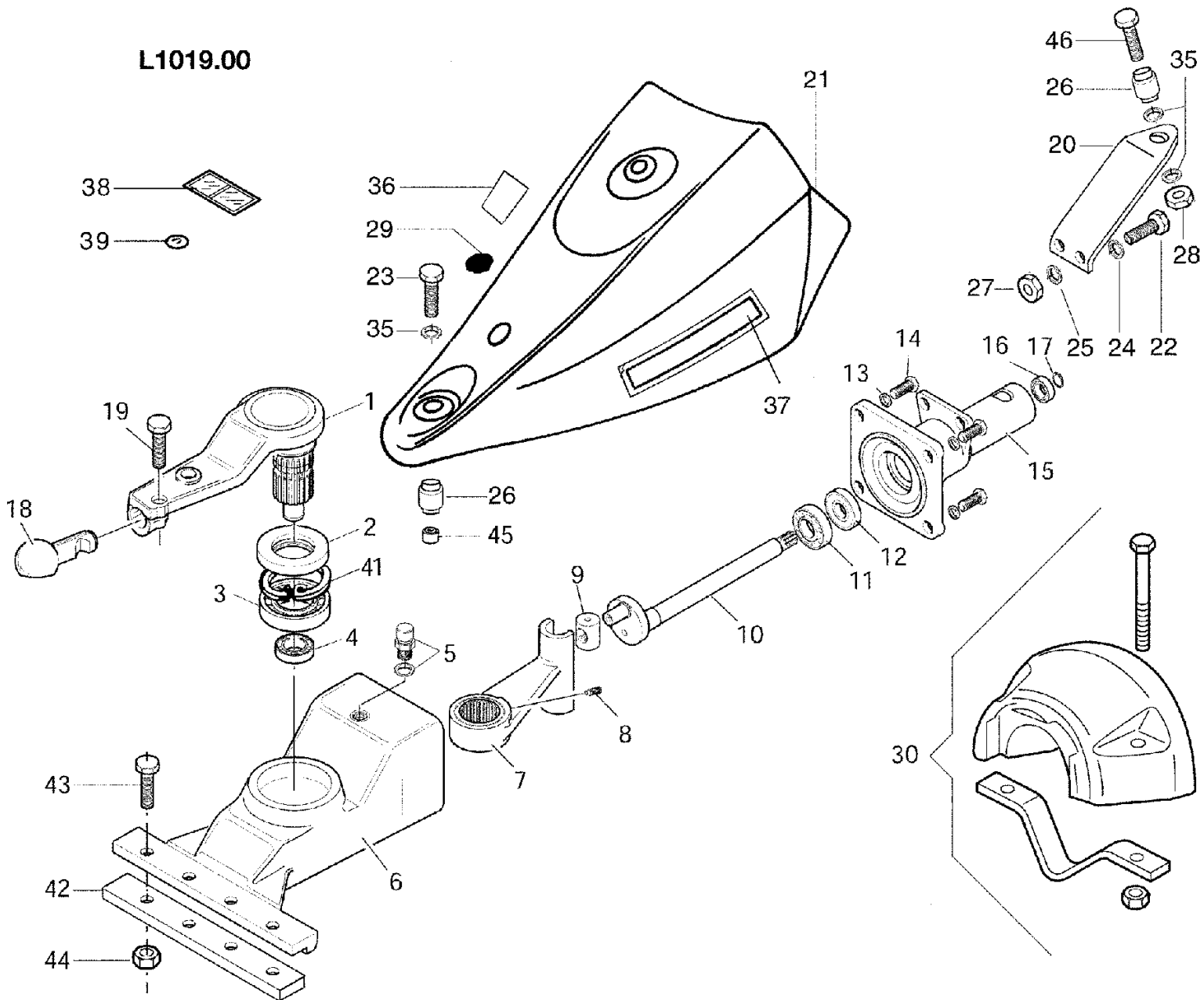
esm communal 122/142

L641.00 L643.00

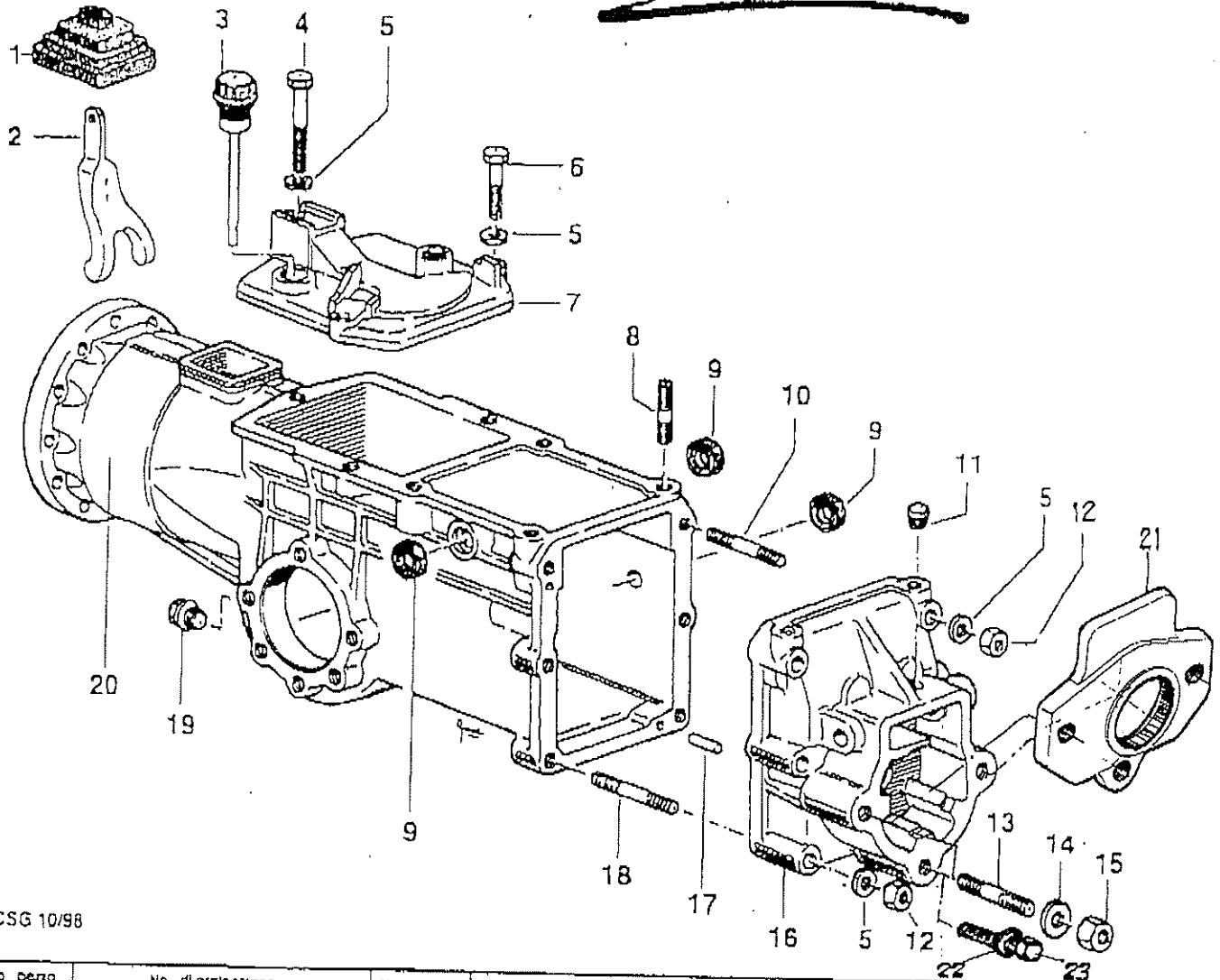


Ref.Nu	Qty	Part number	Description	Validity from	Validity till	Notes	Bulletin
1	1	R1504705	Rivet				
2	1	R1504706	Rivet				
3	1	F1073441	Rivet				
6	1	R1504709	Shear blade (Double)				
8	1	R1504764	Support				
9	1	F1073438	Plate				
10		-	Not available for this product				
12	1	R1504773	Bushing				
13	1	R1504768	Support				
14	1	R1504769	Screw				
15	1	R1504770	Nipple				
16	1	R1504723	Nut				
17	1	R1504772	Swing arm				
18	1	R1504771	Pin				
19	1	F1073436	Plate				
20	1	F1073442	Screw				
21	1	N6249300	Screw				
22	1	R1504776	Washer				
24	1	F1073418	Back (Bar)			142 cm	
24	1	F1073417	Back (Bar)			122 cm	
25	1	F1073422	Tooth (Double)				
27	1	N0892500	Rivet				
28	1	F1073401	Connection plate				
30	1	YN4365400	Washer				
31	1	YN6254600	Screw				
33	1	F1073415	Lever (Fitting)				
40	1	F1073428	Sole				
41	1	F1073430	Attachment (Sole)				
42	1	3916008R	Washer				
43	1	YN4365400	Washer				
44	1	F1073443	Washer				
45	1	R1504723	Nut				
46	1	3806067R	Screw				
47	1	R1504720	Screw				
51	1	F1073432	Slide shoe				
52	1	3806070R	Screw				
53	1	F1073410	Shear blade			142 cm	
53	1	YF1073409	Shear blade			122 cm	

L1019.00

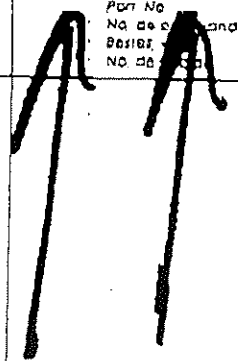


Ref.Nu	Qty	Part number	Description	Validity from	Validity till	Notes	Bulletin
1	1	F1303156	Connecting rod				
2	1	YN0222805	Ring				
3	1	YN1289200	Bearing				
4	1	YN1263701	Bearing				
5	1	YK4101420	Cap				
6	1	F1303100	Housing				
7	1	F1303102	Connecting rod				
8	1	N6251000	Screw				
9	1	YF1303106	Switch				
10	1	F1303108	Shaft				
11	1	N1272501	Bearing				
12	1	YN0210045	Ring				
13	1	3819014R	Grower				
14	1	3806094R	Screw				
15	1	F1303101	Cover				
16	1	YN1263201	Bearing				
17	1	3024020R	Seeger				
18	1	F1303155	Pin				
19	1	3806094R	Screw				
20	1	F1303125	Support				
21	1	PA001254	Hood				
22	1	3806067R	Screw				
23	1	YN6402600	Screw				
24	1	3819013R	Grower				
25	1	3916008R	Washer				
26	1	N4924000	Silent block				
27	1	320000028R	Nut				
28	1	YN1470200	Nut				
29	1	YN5265900	Cap				
30	1	L0105700	Set (Counterweight) Oil bath movement				
35	1	3916012	Washer				
36	-	-	Not available for this product				
37	-	-	Not available for this product				
38	-	-	Not available for this product				
39	-	-	Not available for this product				
41	1	N0140800	Seeger				
42	1	L0081100	Washer				
43	1	YN6332800	Screw				
44	1	YN1463650	Nut				
45	1	F1303133	Spacer				
46	1	N6399710	Screw				



CSG 10/98

No. pezzo No. riserva No. pièce No. end No. parte	No. di ordinazione Part No. No. de commande Bestell - Nr. No. de pedido	No. pezzo No. riserva No. pièce No. end No. parte	No. di ordinazione Part No. No. de commande Bestell - Nr. No. de pedido	No. pezzo No. riserva No. pièce No. end No. parte	No. di ordinazione Part No. No. de commande Bestell - Nr. No. de pedido
1	F75.1646	17	N5.1243.00 6x20mm		
2	F75.0011	18	N3.8257.00		
3	F129.0819	19	N5.2540.00		
4	N6.2944.00	20	F129.0801		
5	N4.3654.00	21	F129.0820		
6	N6.2741.00	* 13	N3.8662.00 3866200		
7	F129.0818 (411)	22	N4.3843.60		
	F129.0802 (410)	23	N6.3879.50		
8	N3.8125.00				
9	N2030.00 14x22x4				
10	N3.8245.00				
11	F75.0835				
12	N1.4585.00				
* 13	N3.8615.00 19/2x30				
14	N4.3877.00 K 430.2510				
15	N1.4705.00				
16	F129.0817				

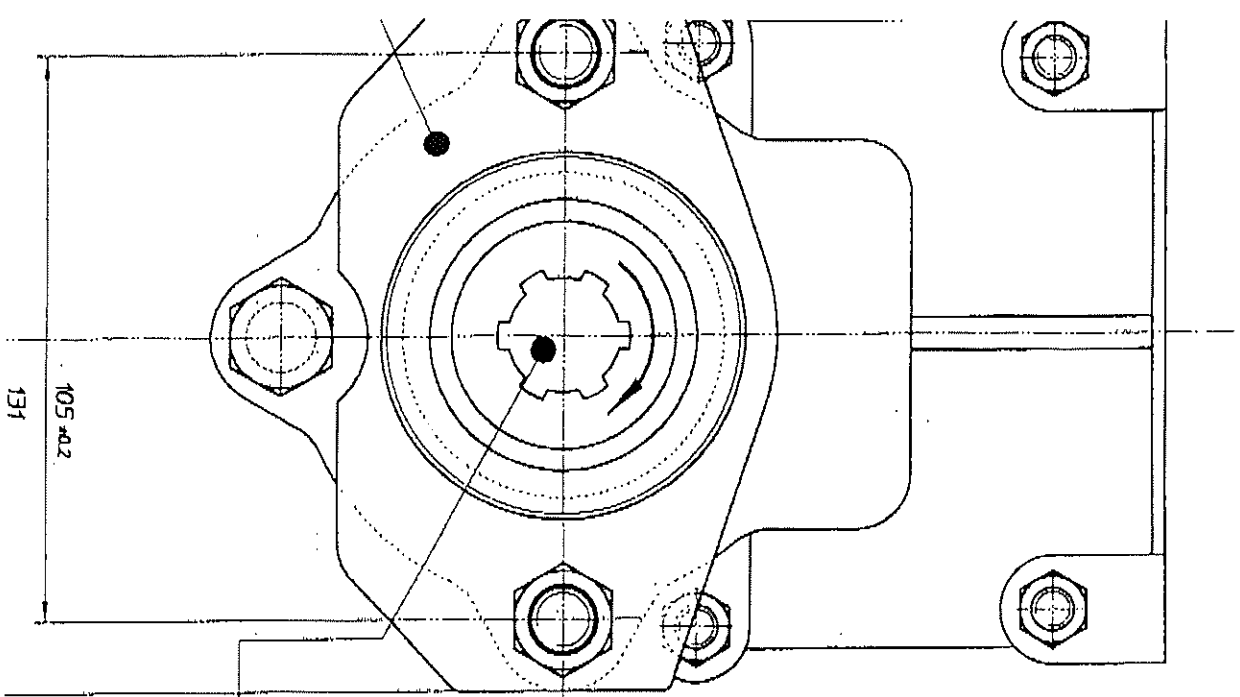


HAFOG
 Salg. Service . Fabrilation . Import
 Lyngager 5-9 2805 Brandby
 Telefon 43 98 66 11 . Fax 43 28 66 25

Segnalazioni di validità
 Usage code
 Signalements de validité
 Gültigkeitsvermerk
 Indicaciónes de validez

FICHES

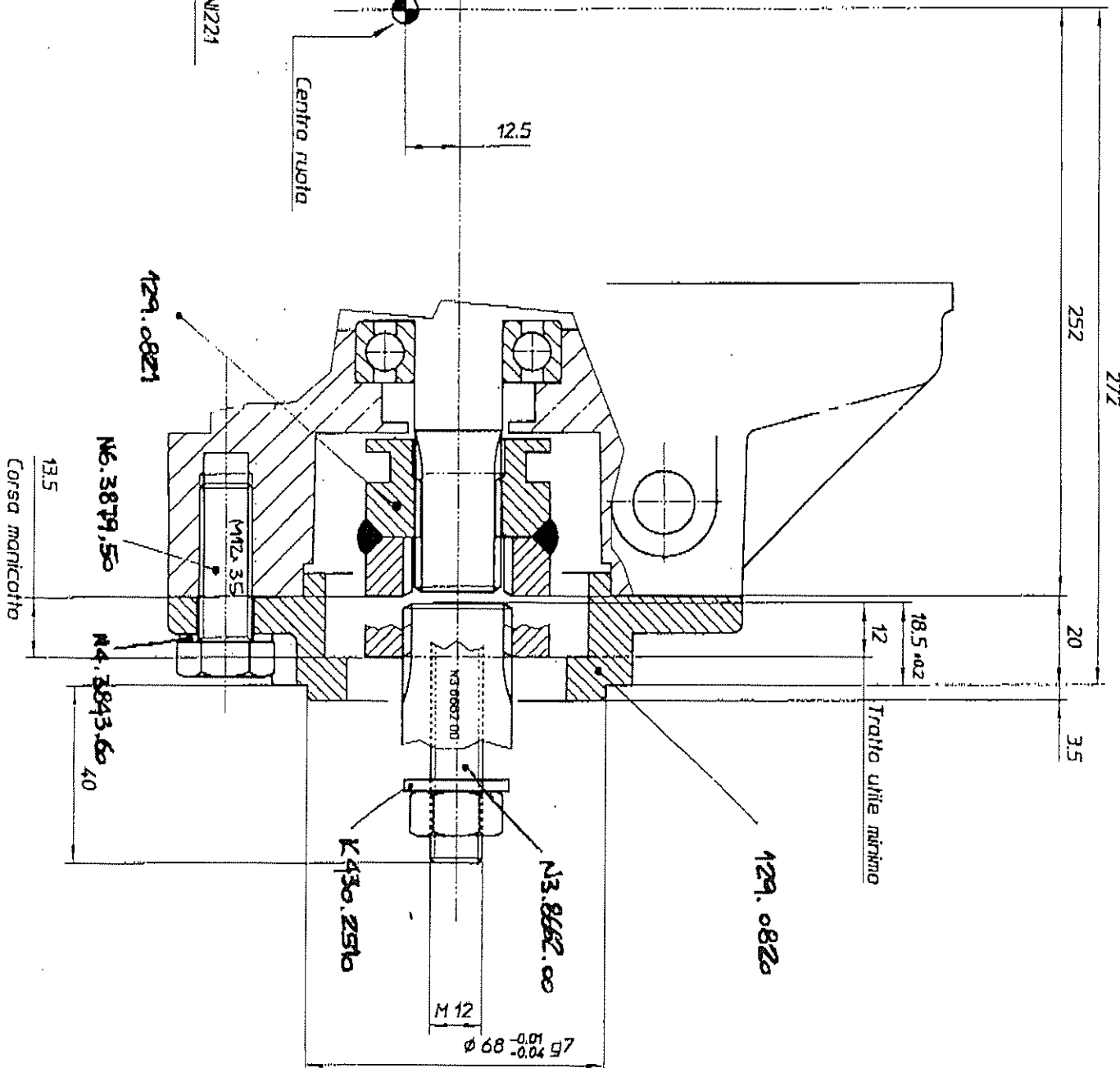




Scanalato UN221

Centro ruota

12.5



272

252

20

35

129.0821

N6.3879.50

M12.35

N4.3843.60
40

K 430.2510

N13.8662.00

129.0820

18.5 ± 0.2

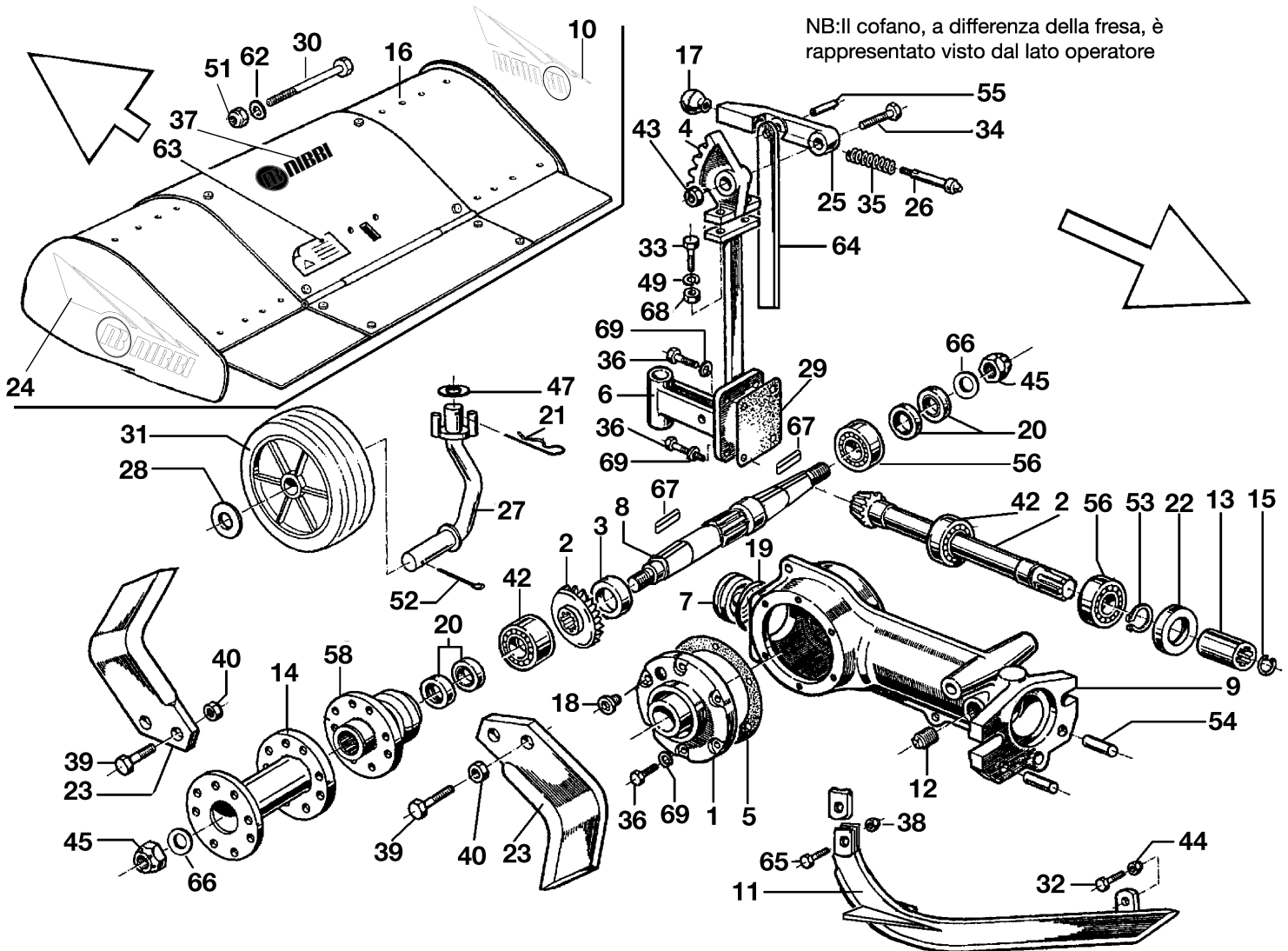
Traito utile minimo

12

13.5
Corsa manicotto

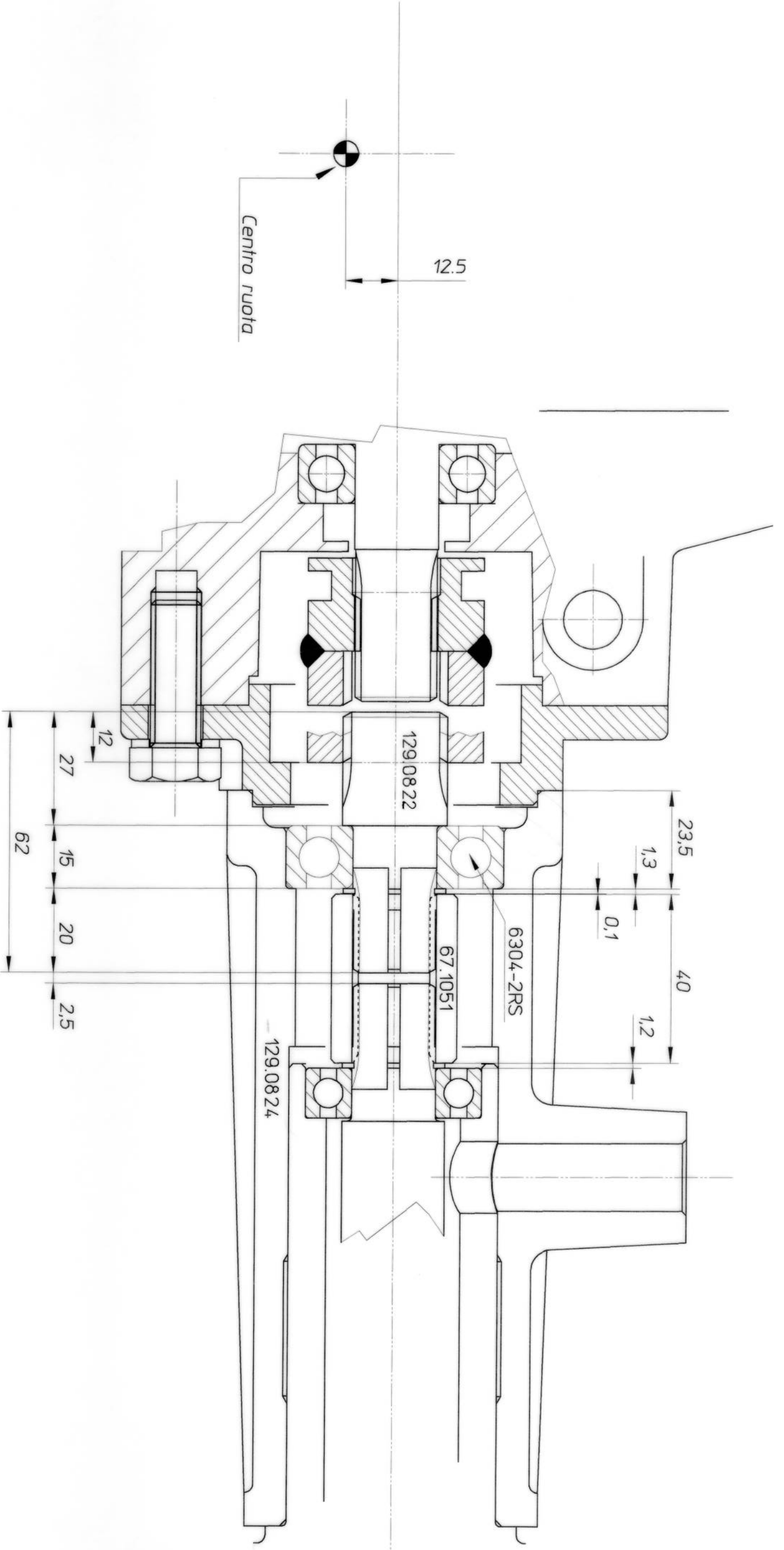
M 12
68 ± 0.02

69219013 - 69219008 - 69219012



Ref.Nu	Qty	Part number	Description	Validity from	Validity till	Notes	Bulletin
1	1	K1101060	Cover				
2	1	K4806930	Set bevel gear				
3	1	K4801310	Spacer				
4	1	K4302350	Sector				
5	1	K1101100	Gasket				
6	1	K4808008	Support (Wheel)				
7	1	K4302520	Cap				
8	1	K4808060	Shaft				
9	1	K1101070	Arm				
10	1	68330029	Mark			Su richiesta; Upon request; DX; RIGHT	
11	1	F0015613	Cutter tool				
12	1	K8535002	Cap				
13	1	K1101080	Joint				
14	1	69210038	Spacer				BT12-002-11/10
15	1	028200019	Ring				
16	1	PA001873	Hood			60+40 cm; Rosso; Red	
16	1	PA001872	Hood			70+60 cm; Rosso; Red	
16	1	PA001860	Hood			80+60 cm; Rosso; Red	
17	1	K8211001	Knob				
18	1	K8536002	Cap				
19	1	K7035045	O-ring				
20	1	N0209200	Ring				
21	1	N1054500	Cotter pin				
22	1	N0210045	Ring				
23	1	R0000138	Cutters kit			Per fresa 70 cm, kit composto da: F0015602, DX, 10pz + F0015603, SX, 10pz; For tiller 70 cm, set composed by: F0015602, RIGHT, 10pcs + F0015603, LEFT, 10pcs	
24	1	68330030	Mark			Su richiesta; Upon request; SX; LEFT	
25	1	K22035508	Lever				
26	1	K2203560	Piston pin				
27	1	K3501830	Support				
28	1	3916020	Washer				
29	1	K1101230	Gasket				
30	1	N6417235	Screw				
31	1	K1102480	Wheel				
32	1	3806067R	Screw				
33	1	YN6335900	Screw				
34	1	N6399710	Screw				
35	1	K7903026	Spring				
36	1	N6254500	Screw				
37	1	68610007	Mark			Su richiesta; Upon request	
38	1	N1458800	Nut				
39	1	N6262100	Screw				
39	1	N6274000	Screw				
40	1	N1463500	Nut	06/2009			
42	1	N1270751	Bearing				
43	1	K7272009	Nut				
44	1	K7275003	Nut				
45	1	N1482500	Nut			DX; RIGHT	
45	1	N1482600	Nut			SX; LEFT	
47	1	3916020	Washer				
49	1	3819014R	Grower				
51	1	YN1470200	Nut				
52	1	YN1060200	Cotter pin				
53	1	YN0118500	Seeger				
54	1	K8504014	Pin				
55	1	K8503039	Pin				
56	1	YN1270701	Bearing				
58	1	K4808050	Support				
62	1	3916012	Washer				
63	1	F0015577	Mark (Danger)			Su richiesta; Upon request	
64	1	F0015612	Rod				
65	1	3806065	Screw				

66	1	N4418000	Washer
67	1	YN0652200	Key
68	1	N1464600	Nut
69	1	N4364350	Washer



Imodi		Data		Oggetto modifica		Firma		Controllo	
● CARATTERISTICA CRITICA		● CARATTERISTICA IMPORTANTE		NESSUN SIMBOLO		● CARATTERISTICA NORMALE			
Materiale:	UNI:	Tolleranze generali	Grezzi	Lungh. e diametri $\pm 0.5\%$ max $\pm 1\text{mm}$	Spess. 10% con minimo di 1mm	Angoli $\pm 2^\circ$	Lavorati	Lungh. e diam. fino a 18 ± 0.15	da 18 a 80 ± 0.25 , $> 80 \pm 0.40$
Stato:	UNI:	Denominazione:		Lavorati		Angoli $\pm 30^\circ$			
Tratt. Term.:	UNI:	Appl. flang. MAK6/7 SU KAM4/5 per MBO		Lavorati		Angoli $\pm 30^\circ$			
Tratt. prof. superf.:	UNI:	Gruppo:		Lavorati		Angoli $\pm 30^\circ$			
Resistenza (kg/mm ²):	UNI:	Macchina:		Lavorati		Angoli $\pm 30^\circ$			
Durezza HRC:	UNI:	Macchina:		Lavorati		Angoli $\pm 30^\circ$			
REGGIO EMILIA ITALY		Disegno N°:		129.00000.00		Data:		06/07/00	



Disegno N°:
129.00000.00