



Parts Manual Mini-trac



Parts_Manual_MINITRAC_EN_10

Drost Machines BV
Utrechtsestraatweg 204
3911 TX RHENEN

Ordering parts:

Tel: 0031 317 650 350

Fax: 0031 317 614 447

E-mail: parts@nimos.nl

Website: www.nimos.nl





1 Cabin	4
1.1 Glass	4
1.2 Cabin accessoires	5
1.3 Dashboard.....	11
2 Hydraulics	13
2.1 Pumps	13
2.2 Functions Implement and Front-lift	15
2.3 PTO Implement	17
2.4 Steering System	19
2.5 Driving System	21
3 Reservoirs and Cooling	23
3.1 Hydraulic-oil tank	23
3.2 Oil-Cooler	24
3.3 Fuel tank and battery.....	25
4 Engine compartment	27
5 Chassis	33
5.1 Chassis Front	33
5.2 Front-lift	35
5.3 Chassis Rear	37
5.4 Cargo body.....	39
6. Fast Moving Parts	41





1 Cabin

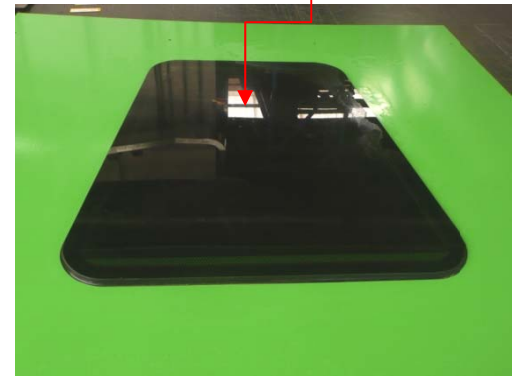
1.1 glass



28-0316

28-0920(L)
28-0921(R)

28-1201

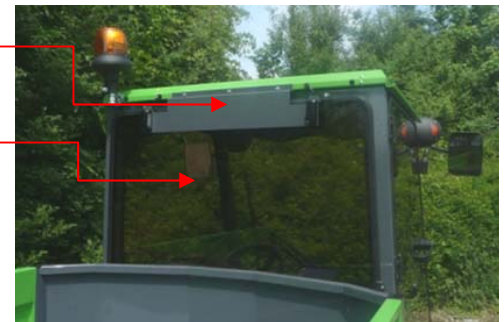


14-1815

28-0317

36-1480

28-0611



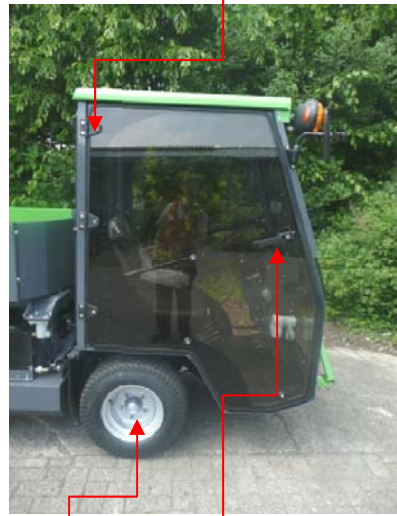


1.2 Cabin accessoires



36-1060(R)
36-1061(L)

14-0688
14-0694



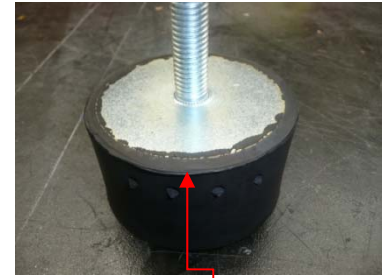
14-0680

38-1215

14-0690



14-0692



14-0691

20-2114



14-9916



16-2170(R)
16-2172(L)

16-2176

14-3312(L)
14-3313(R)

16-2148

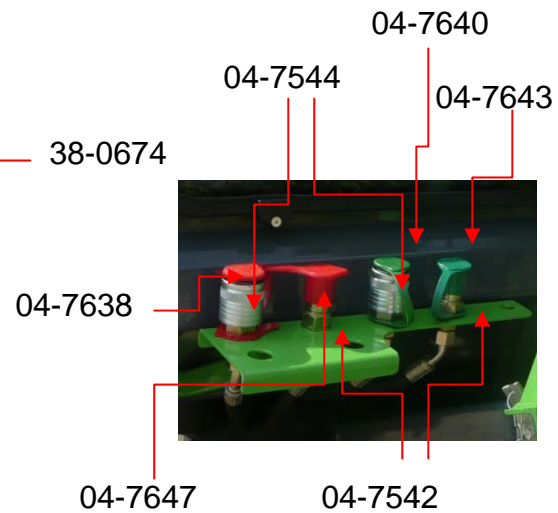
14-2739

14-2718

38-0674



14-9931



04-7638

04-7647

04-7544

04-7542

04-7640

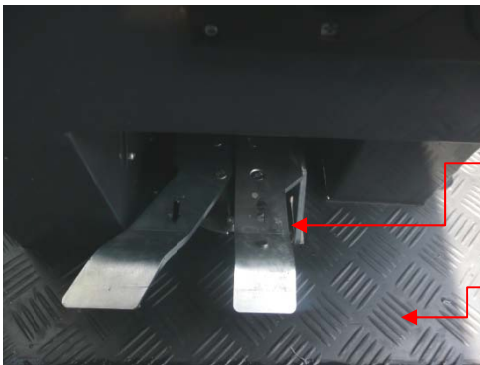
04-7643



Part code	Description
04-7544	Quick coupling female 1/2
04-7542	Quick coupling male 1/2
04-7640	Dust plug green
04-7638	Dust plug red
04-7643	Dust cover green
04-7647	Dust cover red
14-0960	Handgrip outdoor R+L
14-0615	Handgrip outdoor R
14-2718	Front-screen wiper
14-2739	Wiper blade
16-2170	Heat light R
16-2172	Heat light L
16-2148	Rotation light (flexible) 12V
28-0316	Tinted window front
28-0317	Tinted window front under
28-0611	Rear window
28-0920	Tinted window door L
28-0921	Tinted window door R
28-1201	Roof window
38-0674	Wheel front 23-10,5-12
38-0687	Wheel rear 26-12-12
38-1215	Wheel nut
14-9931	Sun visor
14-0688	Handgrip right door
14-0694	Handgrip left door
14-1815	Door seal
36-1060	Door frame R
36-1061	Door frame L
14-3312	Exterior rear view mirror L
14-3313	Exterior rear view mirror R
14-9916	Gas cylinder
14-0692	Door lock barrel shield
14-0691	Door lock barrel
16-2176	Working light (front and back)
36-1480	License plate holder
20-2114	Vibration damper

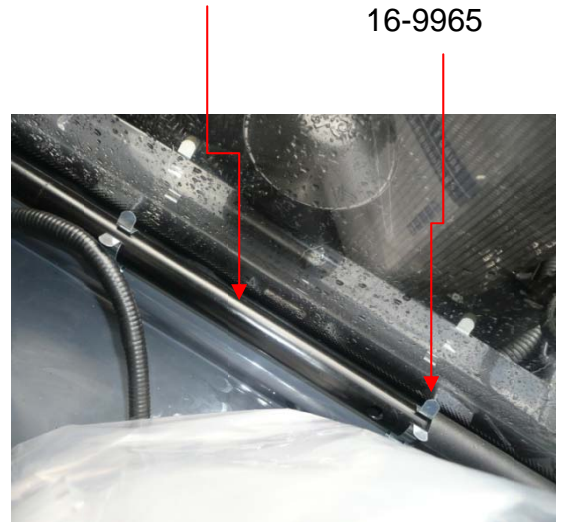


14-3007



14-9952

40-0924



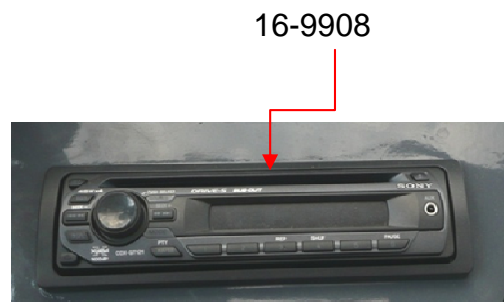
16-9965



14-2742



16-9902



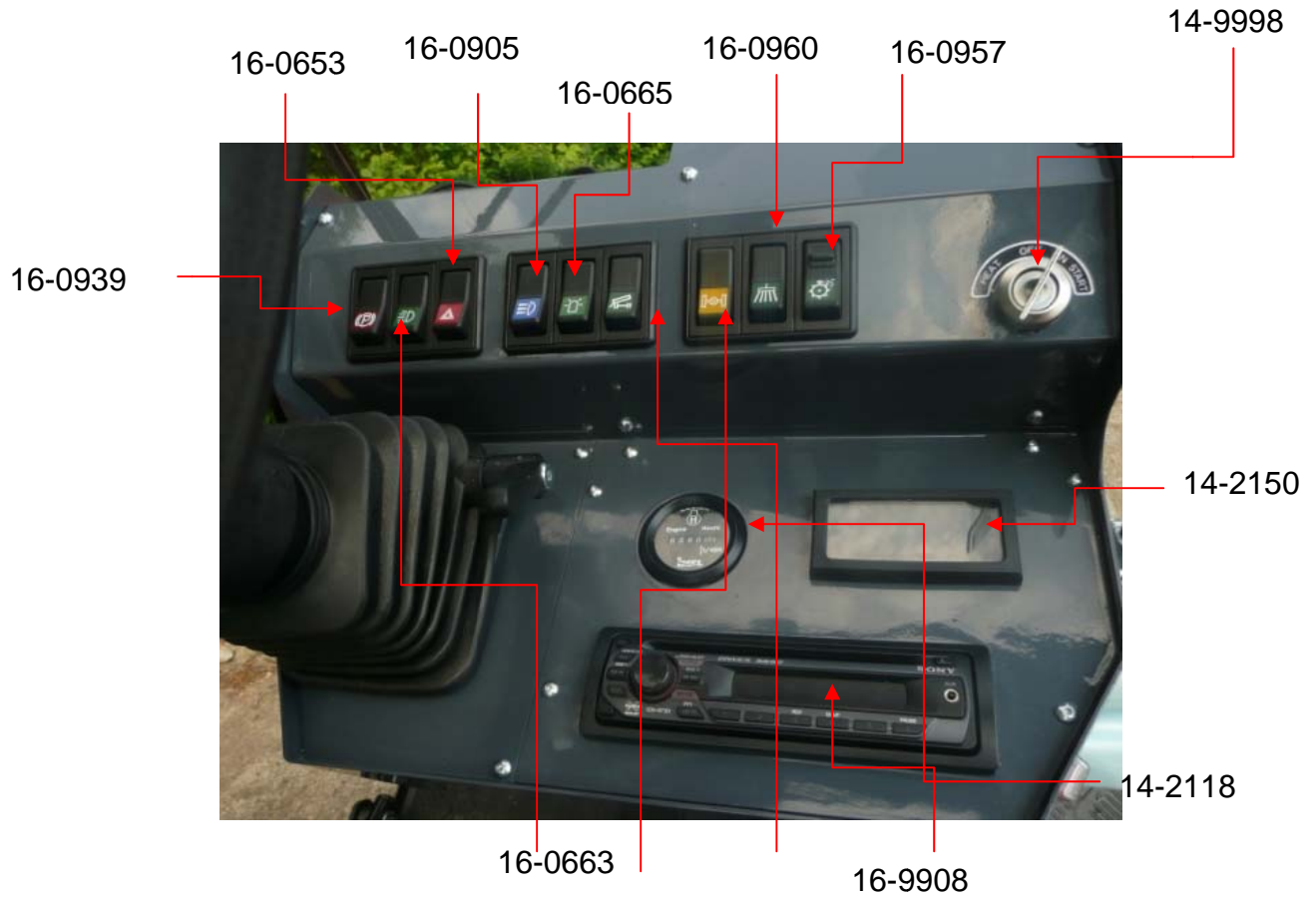
16-9908



Parts Manual Mini-trac



Part code	Description
14-2742	Screen-washer pump + tank
14-3007	Grammer msg-20
14-9952	Driving pedal DM-Trac (double)
40-0924	Anti-slide rubber
16-9902	Speakers
16-9908	Radio-CD-player
16-9902	ISO connector (Radio)
16-9965	Tool clip



14-2706



14-2111



14-2745



16-9904



Part code	Description
14-0968	Switch panel
14-1215	Heater valve
18-0351	Cable 1,5mm (heater) with handle
20-3036	Water hose 16mm
14-0924	Heather
14-2415	Ventilation breather
14-9989	Cabin trim
16-9904	Radio cover plate
14-2703	Wiper motor
14-2745	Washer hose
14-2118	Hour meter
14-2150	Module Mini-trac
14-9998	Ignition switch
16-0653	Switch light
16-0677	Switchboard
16-0665	Switch flash light
16-0957	Mow symbol
16-0960	Symbol brush
16-0939	Switch park brake
14-2111	Analogue tachometer



1.3 dashboard



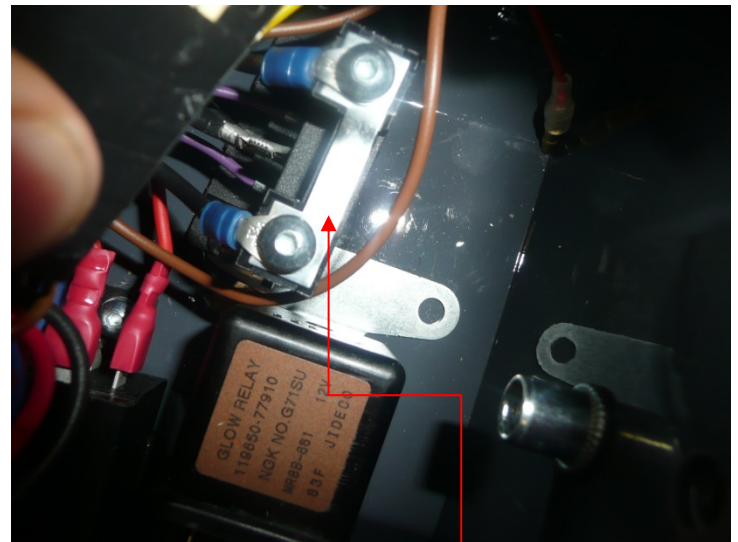
16-4227
16-1532
16-4230



16-9956



18-0606



16-2822

16-4233



16-9920



14-9924

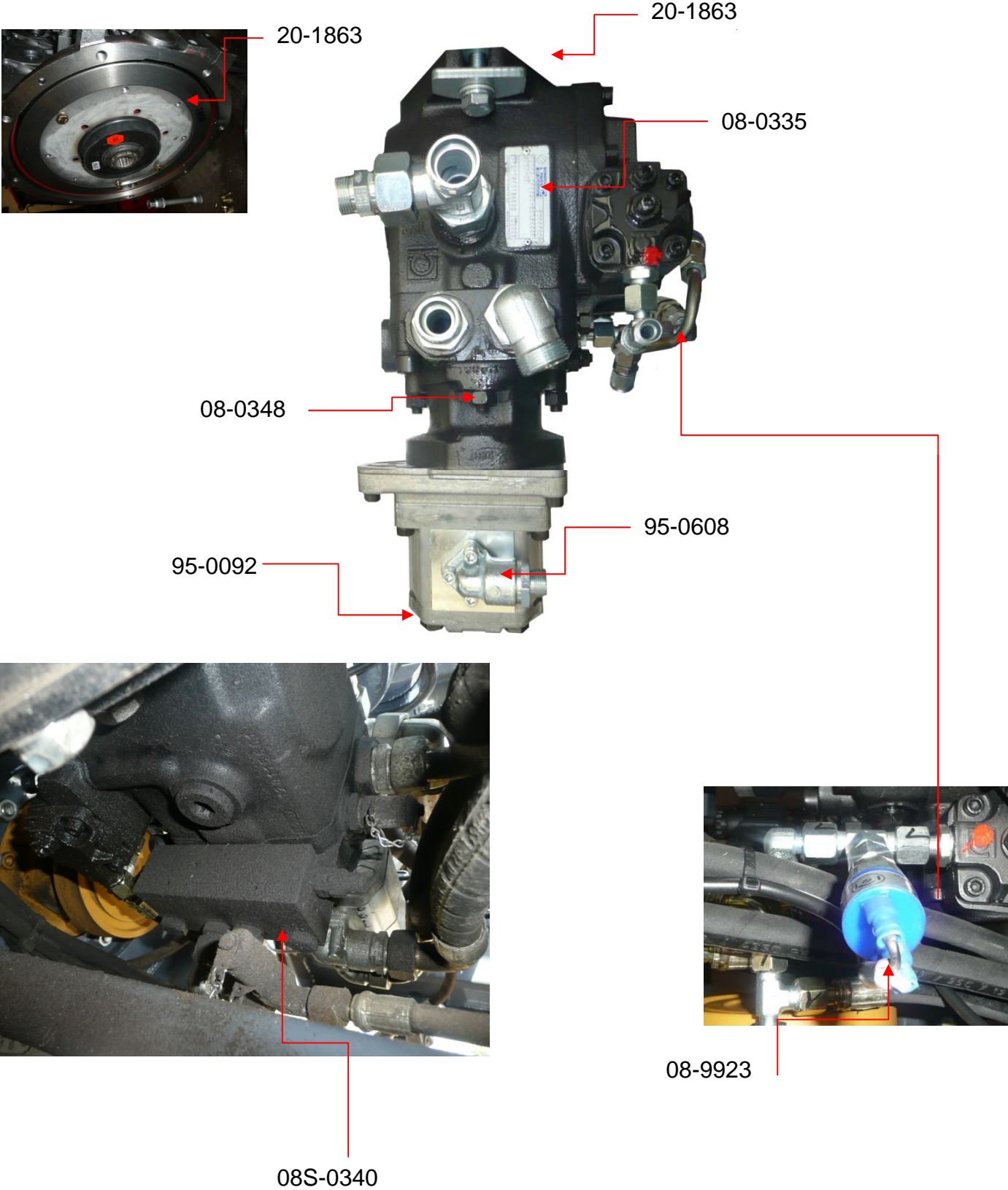


Part code	Description
16-9956	Direction indicator relay
16-4227	Fuse 10A
16-4230	Fuse 25A
16-4233	Fuse 30A
14-1250	Module
14-9940	Claxon switch
14-9924	Steering wheel
16-4233	Fuse 30A plate
18-0606	Hand throttle
16-2822	Combi switch turning light, horn
16-1532	Fuse box
16-9920	Adjustable steering column



2 Hydraulics

2.1 Pumps





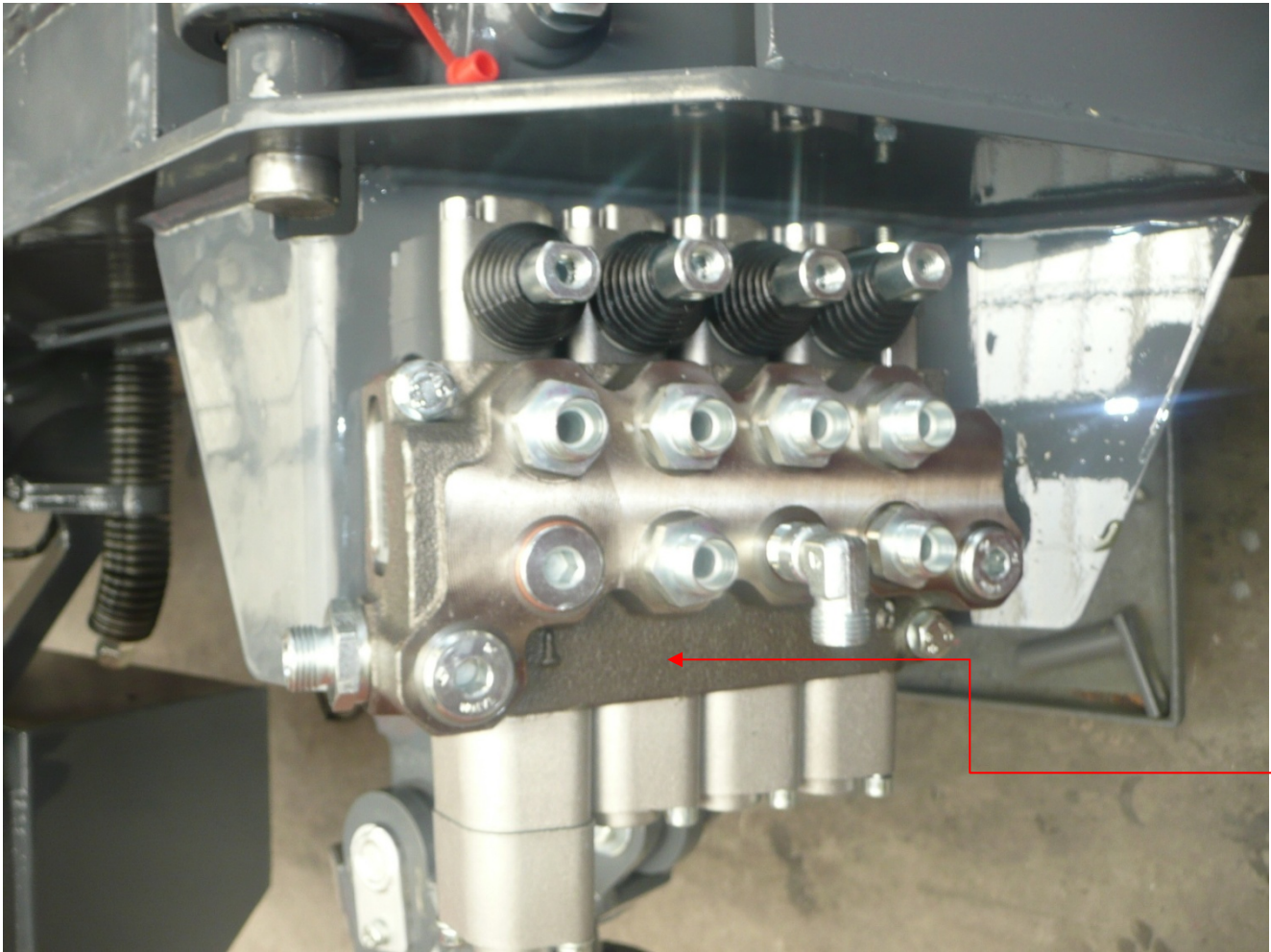
Parts Manual Mini-trac



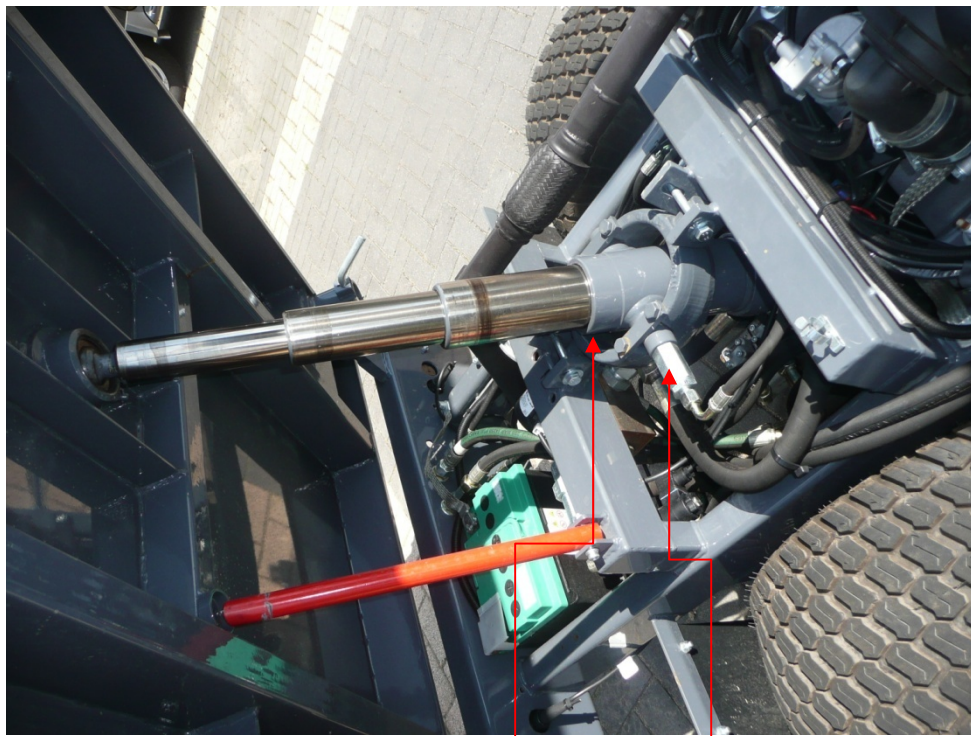
Part code	Description
08-0335	Driving-pump DM-Trac
08-0403	Power limiter valve
08-9921	Pressure switch IP 0-2 bar rear light
08-0348	SAE flange with fill pump
20-1863	Coupling Engine/Pump
95-0092	Gear pump 6cc (steering)
95-0608	Pump flange 2x
08S-0340	Power limiter



2.2 Functions Implement and Front-lift



95-0941



11-0303

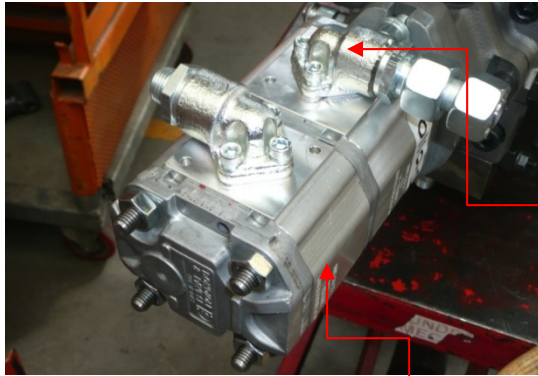
08-3009



Part code	Description
08-3009	Safety valve
11-0303	Tipping cylinder
95-0941	VCD 20-4



2.3 PTO Implement

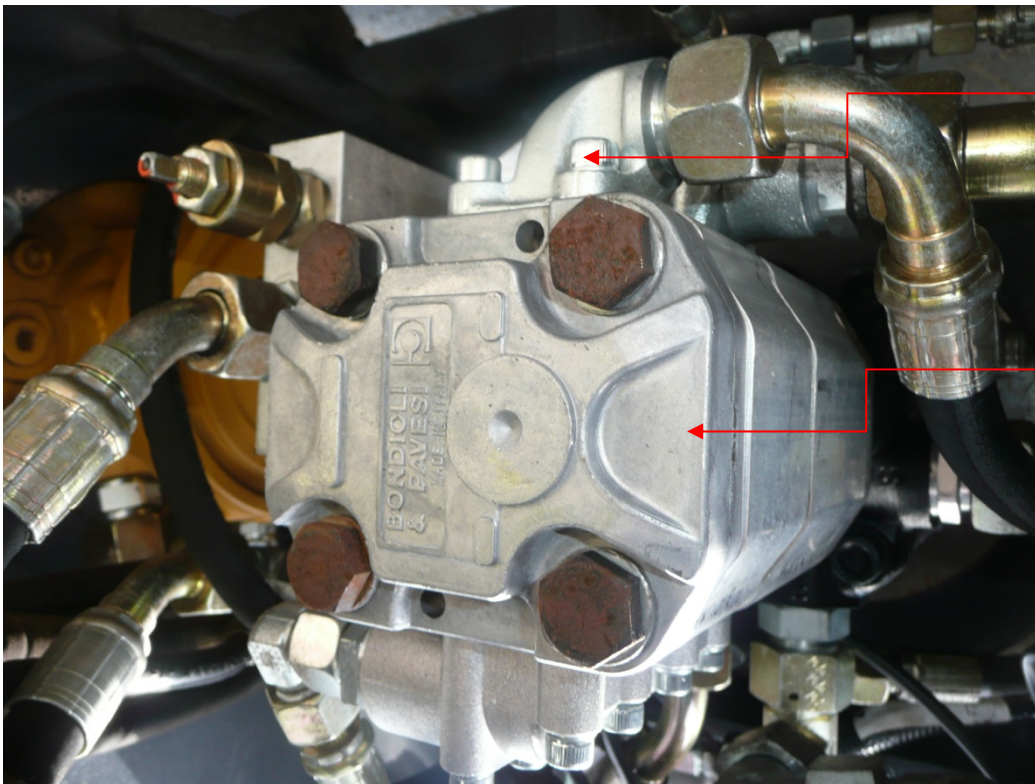


95-0608

95-0124



95-1239



95-0609

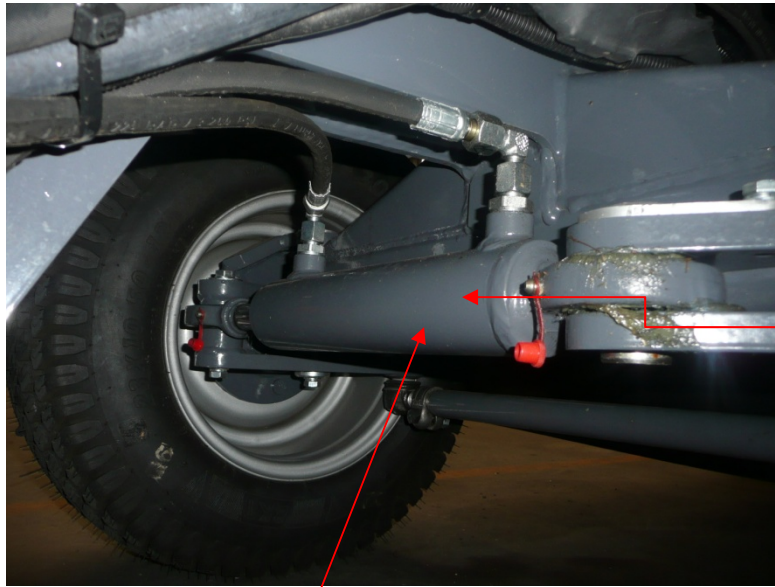
95-0135



Part code	Description
95-0609	Pump flange
95-0135	Pump
95-0120	Gear pump 14/6.7
95-0608	Pump flange
95-1239	



2.4 Steering System



11-0751



11-1244



08-3910



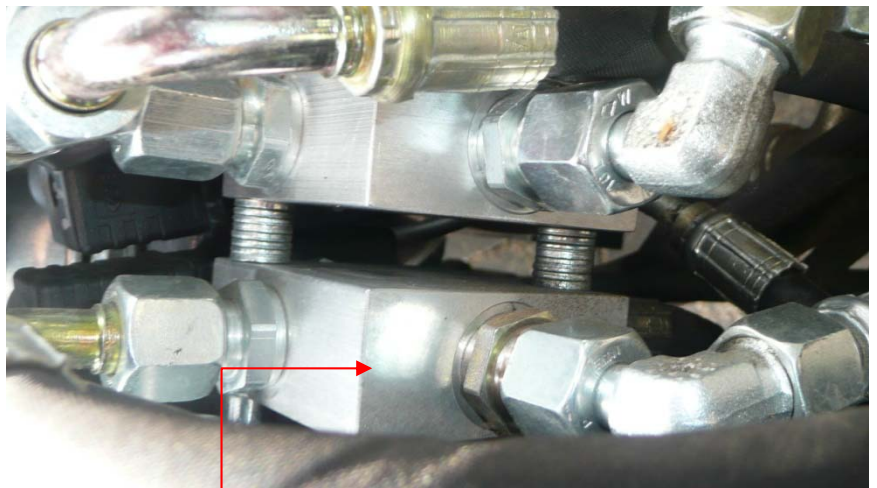
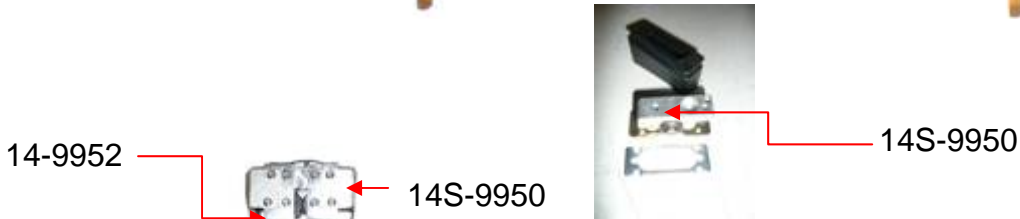
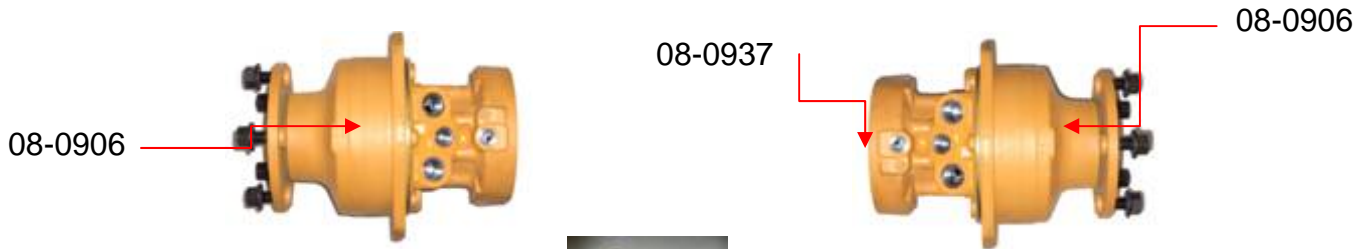
Parts Manual Mini-trac



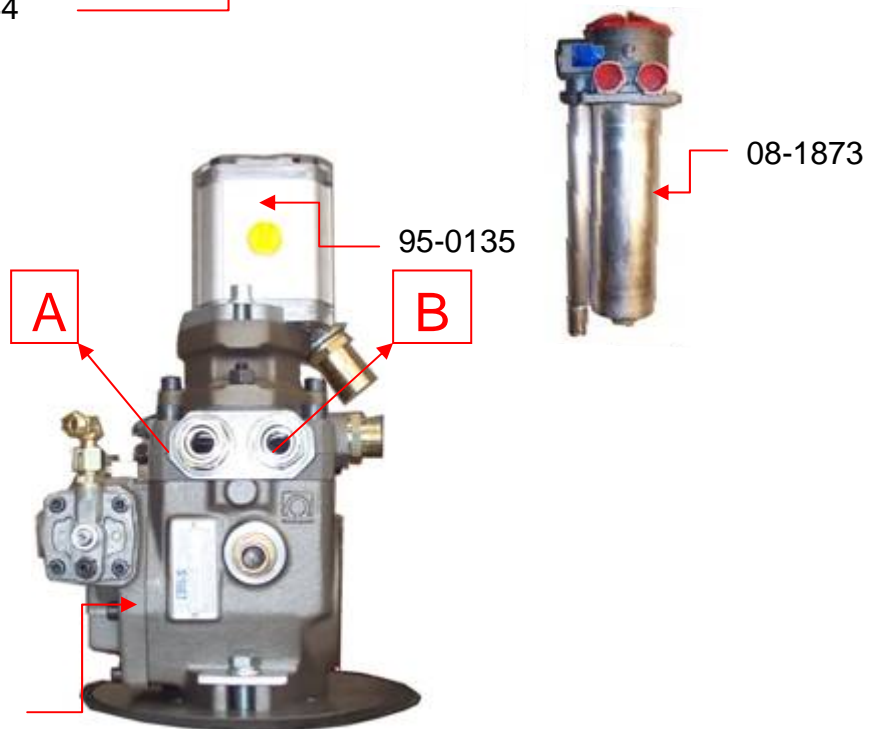
Part code	Description
08-3910	Orbitrol OSPC 125LS+prio
11-0751	Steering cylinder
11-1244	Seal kit cylinder 25/50
24-2727	Nut M24



2.5 Driving System



08-1244



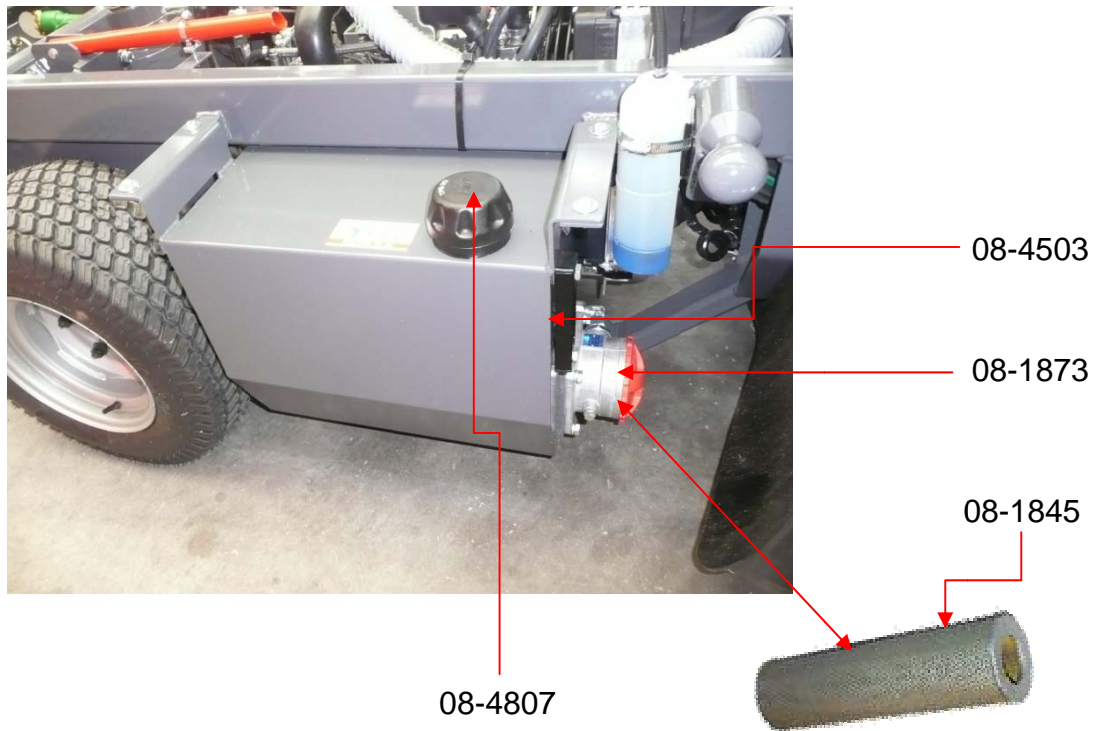


Part code	Description
08-0323	Driving-pump DM-Trac
08-0906	Wheel-motor rear
08-1873	Hydraulic filter
14-9952	Driving pedal DM-Trac
95-0135	Pump 6cc(PTO)Complete
14S-9950	Bracket for driving pedal left / right (kit)
36C-6019	Driving pedal left side
36C-6020	Driving pedal right side
08-0937	Seal kit for wheel-motor with brake
08-1244	Brake valve



3 Reservoirs and Cooling

3.1 Hydraulic-oil tank

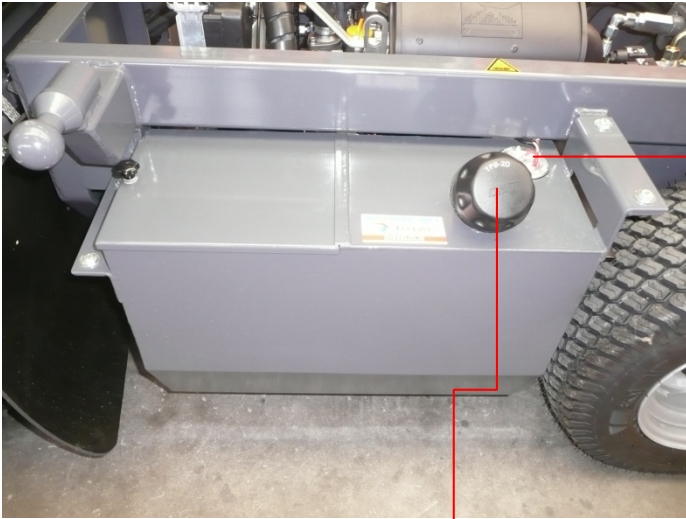




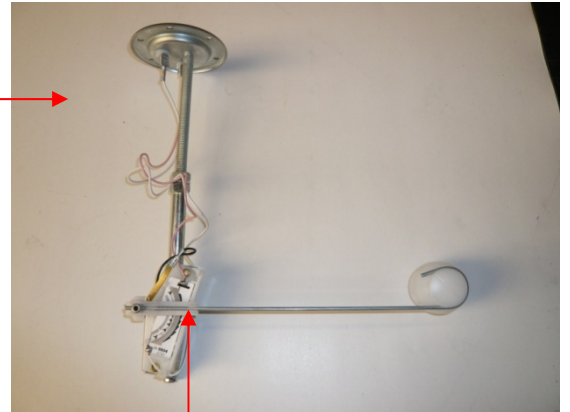
Part code	Description
08-1873	Hydraulic filter complete
08-1839	Hydraulic filter element
08-4503	Looking glass
08-9939	Seal ring
08-1809	Hydraulic filter section
74-3981	Hand pump
	Cooling oil reservoir
08-4807	Filling/Breather filter 7 mu element



3.3 Fuel tank and battery



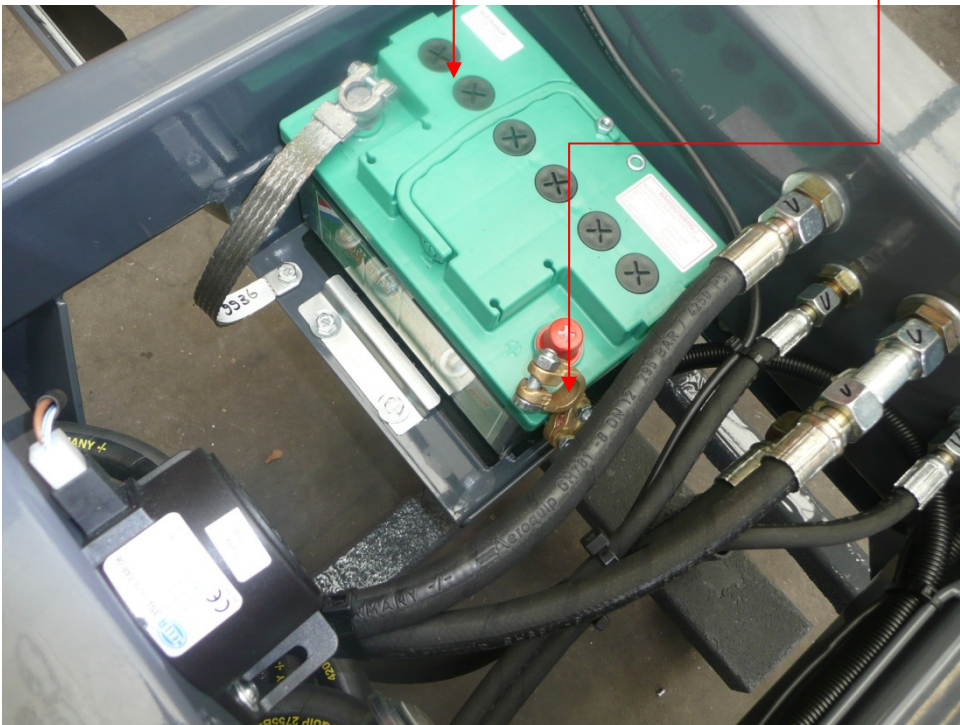
08-4807



20-9939

16-9939

16-9946

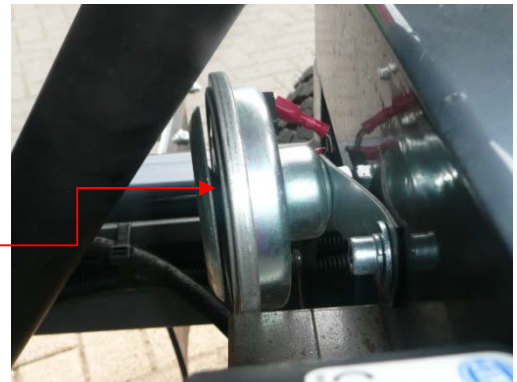
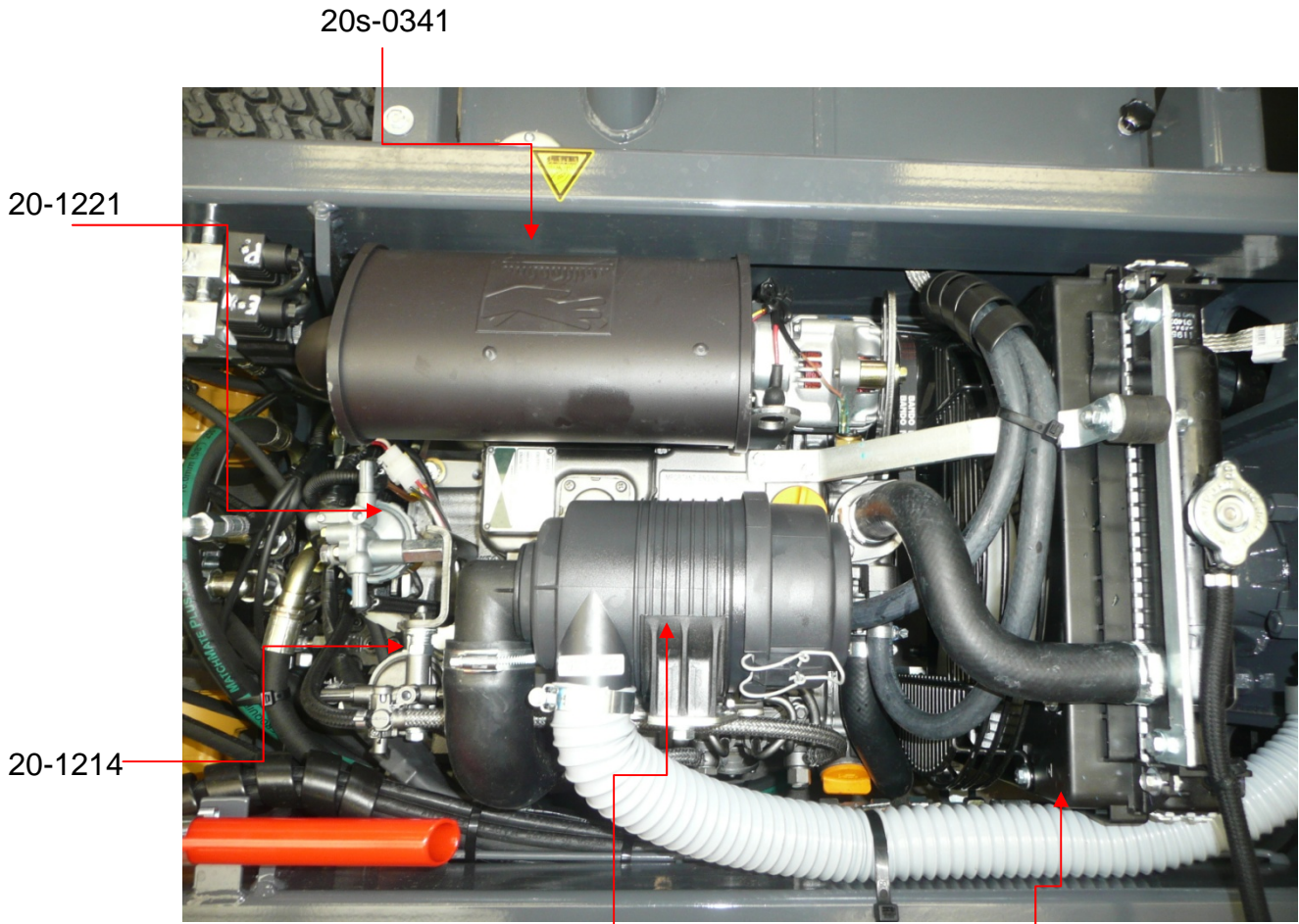




Part code	Description
08-4807	Breather filler TR2
16-9944	Battery-terminal clamp -
16-9946	Battery-terminal clamp +
16-9939	Battery 12V 62 Ah
20-9939	Tank transmitter

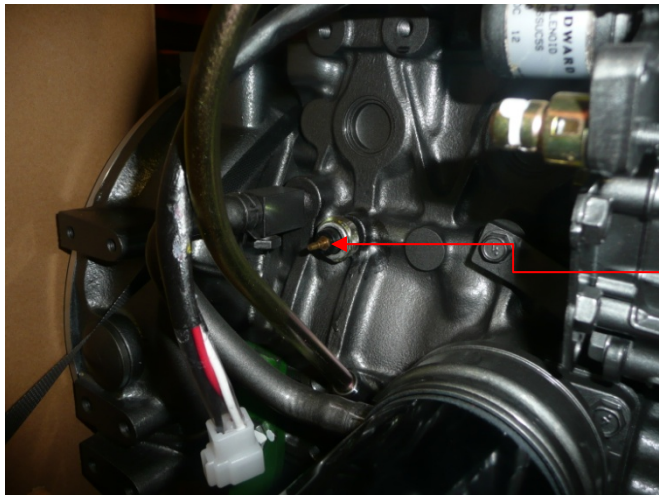


4 Engine compartment

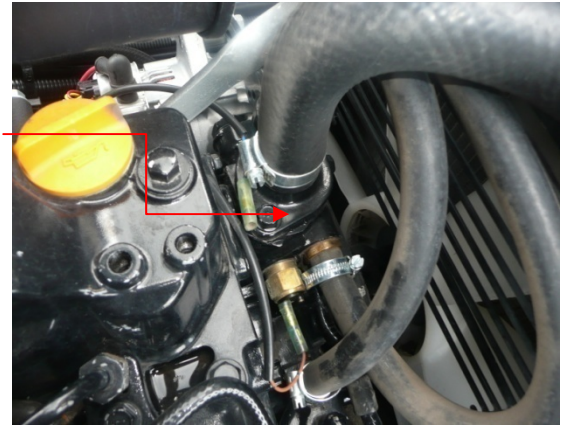




Part code	Description
Engine 3TNV88	
20S-0309	Air filter cartridge
20-1766	Fuel pump
20-3009	Fuel hose RM 8
20-3036	Water hose 16mm
20-0366	Air hose 50mm
20-1214	Fuel filter
20-1221	Water fuel filter
20-3066	Air filter hose
20-0918	Motor oil filter
14-9939	Horn
20-0306	Air filter rain cap
20-9970	Temperture sensor



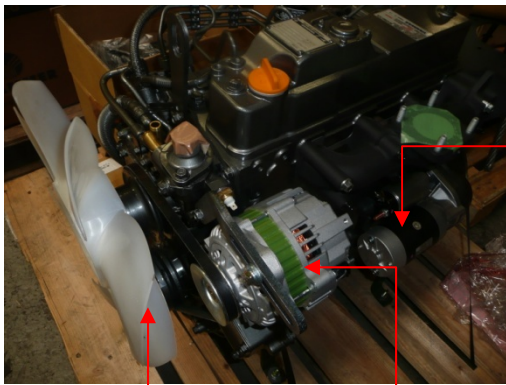
20-8009



20-9970



20-2129

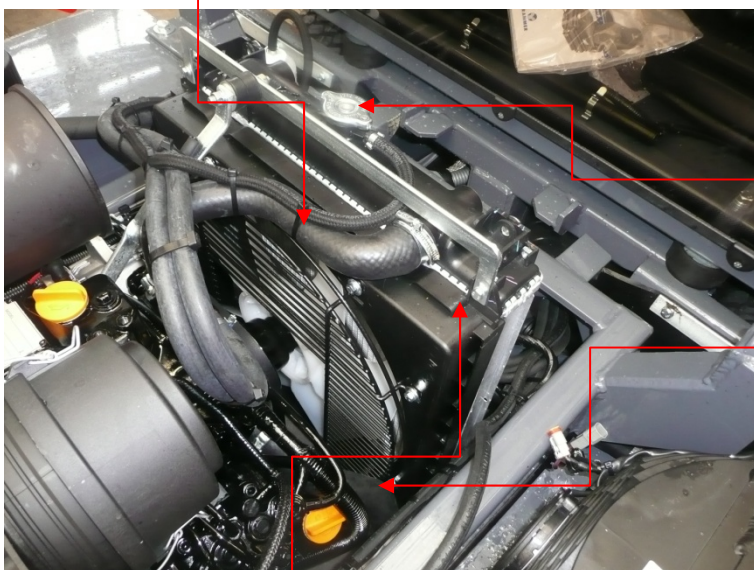


20-3912

20-4204



20-1220



20-4825

20-4825



20-0918



Part code	Description
Engine 3TNV70	
20-2129	Vibration damper (engine)4x
20s-341	Muffler Yanmar
20-3352	Engine Yanmar
20-4204	Generator Yanmar
36S-2002	Exhaust pipe mini
20-4825	Radiator
20-3912	Engine starter
20-8009	Oil pressure sensor
20-2485	Gasket
20-9970	Thermostat Yanmar
	I
	V-belt
20-1220	Fuel filter