



Parts Manual Mini-trac



Parts_Manual_Mini-trac_EN_10

Drost Machines BV
Utrechtsestraatweg 204
3911 TX RHENEN

Ordering parts:

Tel: 0031 317 650 350

Fax: 0031 317 650 351

E-mail: parts@nimos.nl

Website www.nimos.nl





- 1 Cabin 5**
 - 1.1 Glass 5
 - 1.2 Cabin accessoires 6
 - 1.3 Dashboard..... 12
- 2 Hydraulics..... 14**
 - 2.1 Pumps 14
 - 2.2 Functions Implement and Front-lift 16
 - 2.3 PTO Implement 18
 - 2.4 Steering System 20
 - 2.5 Driving System 22
- 3 Reservoirs and Cooling..... 24**
 - 3.1 Hydraulic-oil tank 24
 - 3.2 Oil-Cooler 26
 - 3.3 Fuel tank and battery..... 28
- 4 Engine compartment 30**
- 5 Chassis 36**
 - 5.1 Chassis Front 36
 - 5.2 Front-lift 38
 - 5.3 Chassis Rear 40
 - 5.4 Cargo body..... 42
 - 5.5 A-Frame 44
- 6. Fast Moving Parts..... 46**





Parts Manual Mini-trac





1 Cabin

1.1 glass





1.2 Cabin accessoires

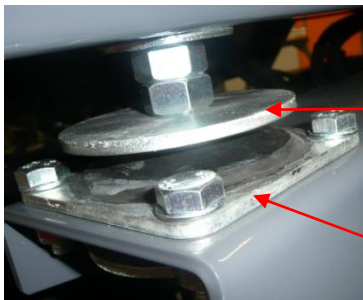


14-0624



14-1815

14-9921

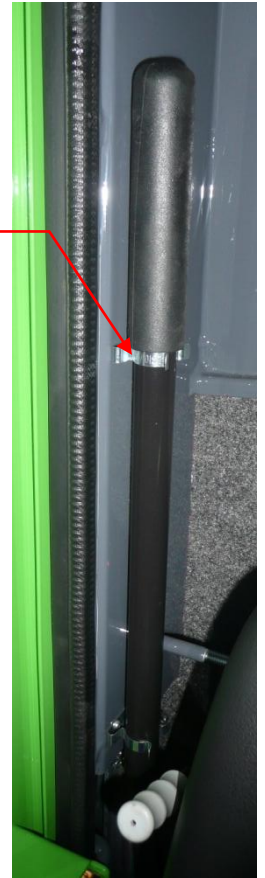




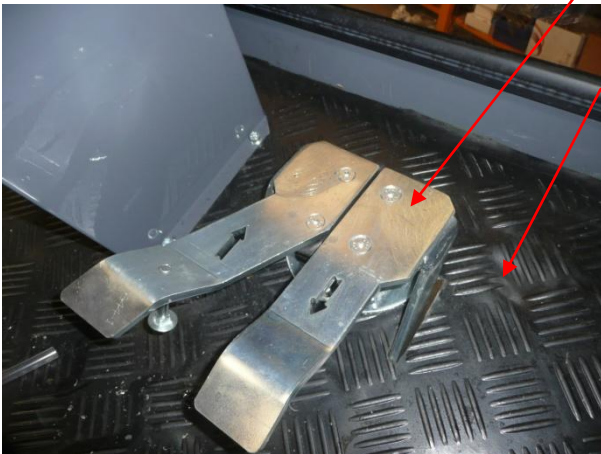
Part code	Description
04-7502	Quick coupling male 1/4"
04-7504	Quick coupling female 1/4"
04-7506	Dust cap red female ¼
04-7508	Dust cap red male 1/4
04-7542	Quick coupling male 1/2"
04-7544	Quick coupling female 1/2"
04-7546	Dust cap red female 1/2
04-7548	Dust cap red male 1/2
14-0630	Handgrip outdoor L with lock
14-0615	Handgrip outdoor R
14-1803	Window rubber
14-1806	Window rubber locking
14-2721	Front-screen wiper
14-2736	Wiper blade
16-2131	Heat light R
16-2132	Heat light L
16-2148	Rotation light (flexible) 12V
28-0314	Tinted window front
28-9933	Tinted window front left and right
28-1227	Case window
28-0924	Tinted window door
38-0685	Wheel front 26-12-12
38-0687	Wheel back 26-12-12
38-1215	Wheel nut
24-3918	Sheet-metal ring M16
14-1503	Vibration silencer (Cabin 4x)
14-9921	Gas spring
14-0624	Door lock barrel R
14-0627	Door lock barrel L
14-1815	Surround seal weather-strip



14-3005

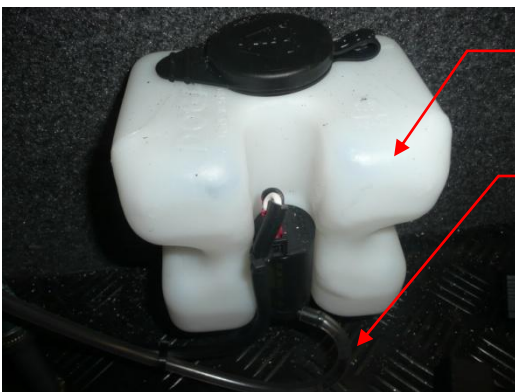


16-9965



14-9952

40-0942



14-2742

14-2745



16-9902



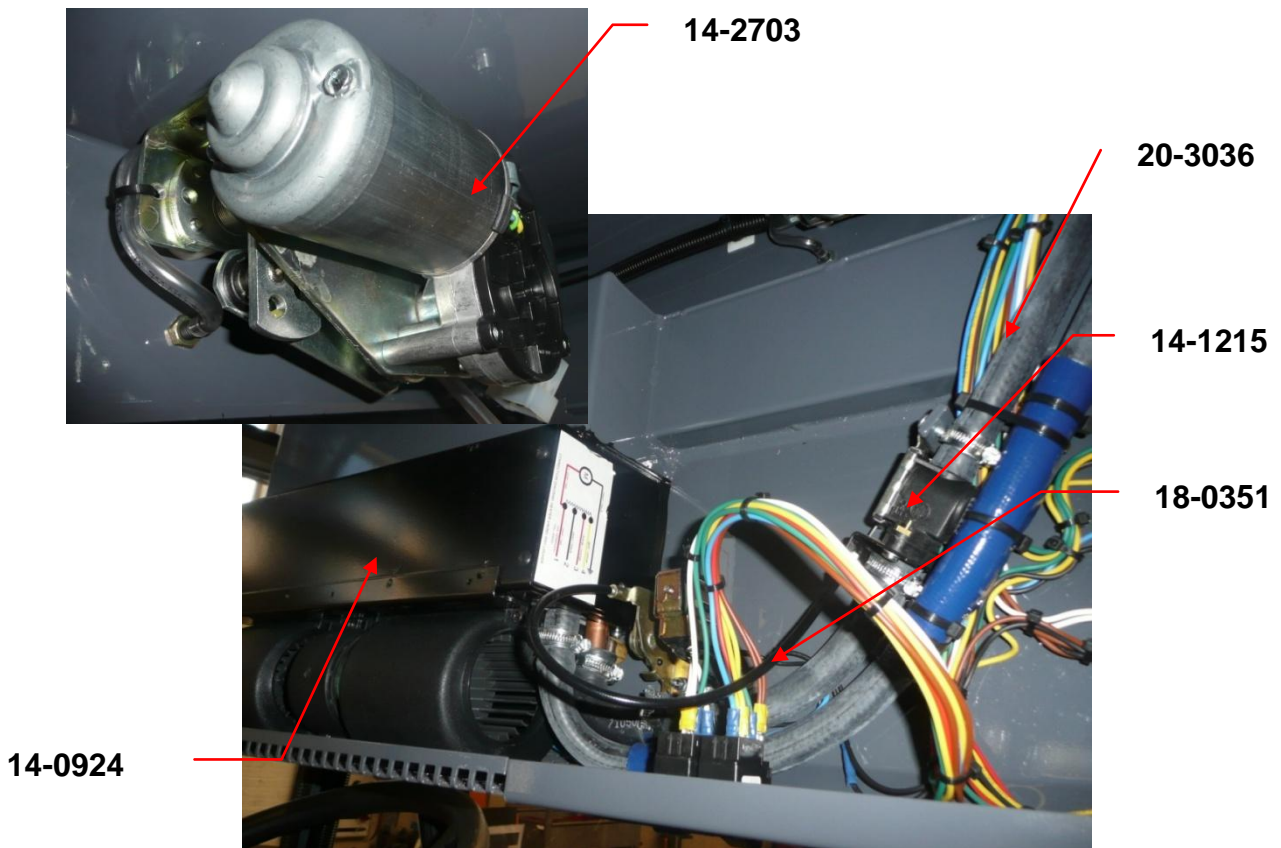
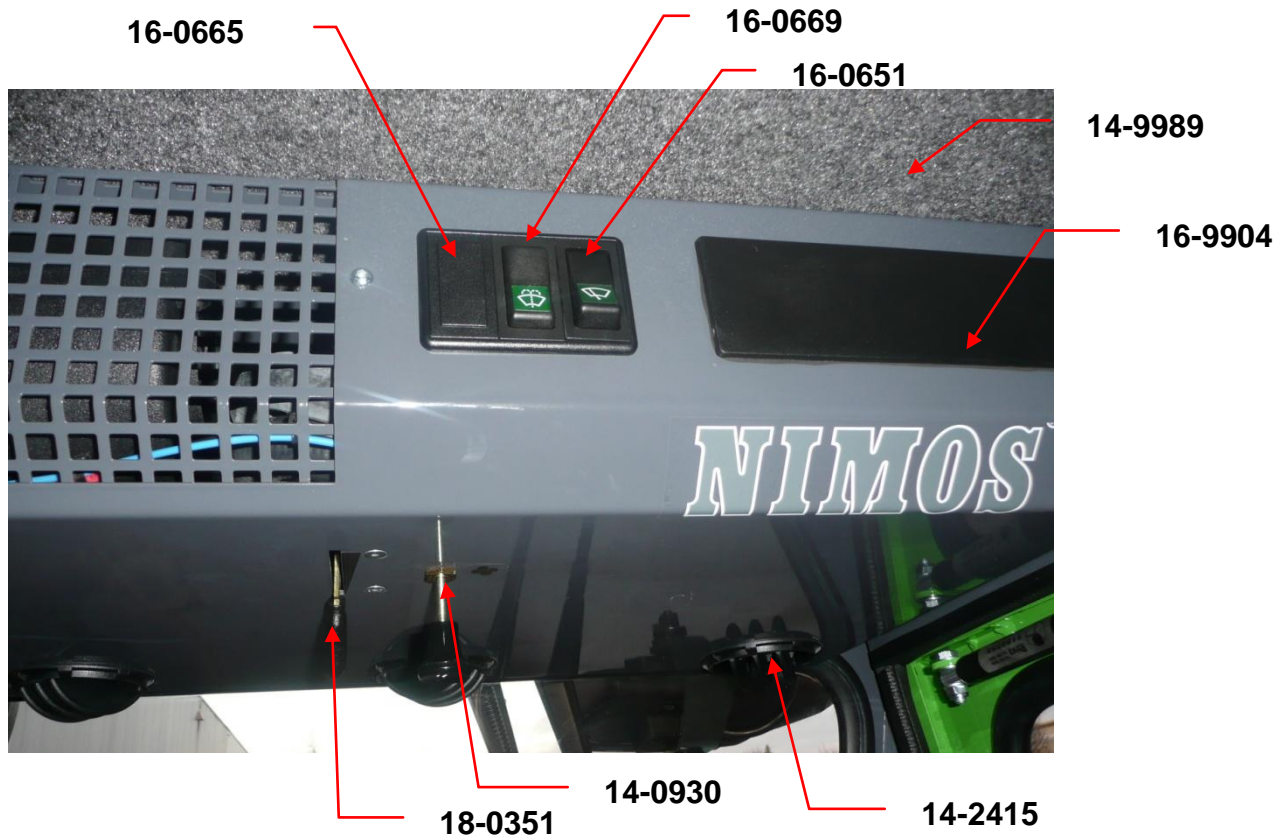
16-9908



Parts Manual Mini-trac



Part code	Description
14-2742	Screen-washer pump + tank
14-3005	Seat, mech. suspended ,
14-3025	Arm rest seat (L and R)
14-9952	Driving pedal DM-Trac (double)
40-0924	Anti-slide rubber
16-9902	Speakers
16-9908	Radio-CD-player
16-9902	ISO connector (Radio)
16-9965	Tool clip

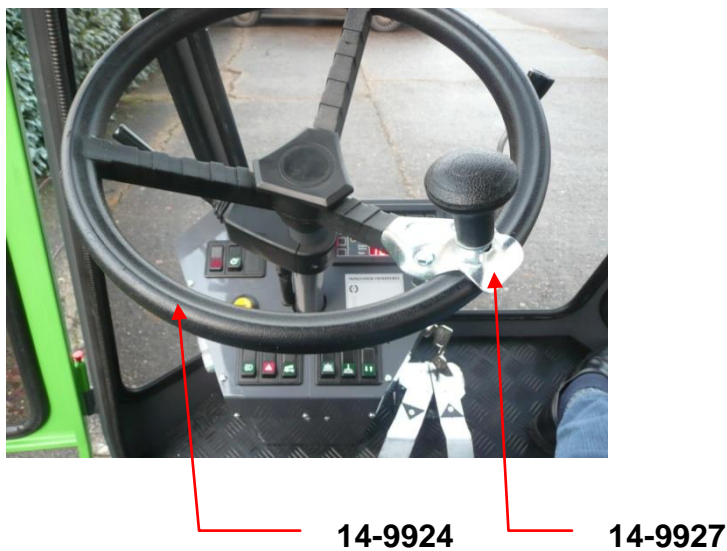
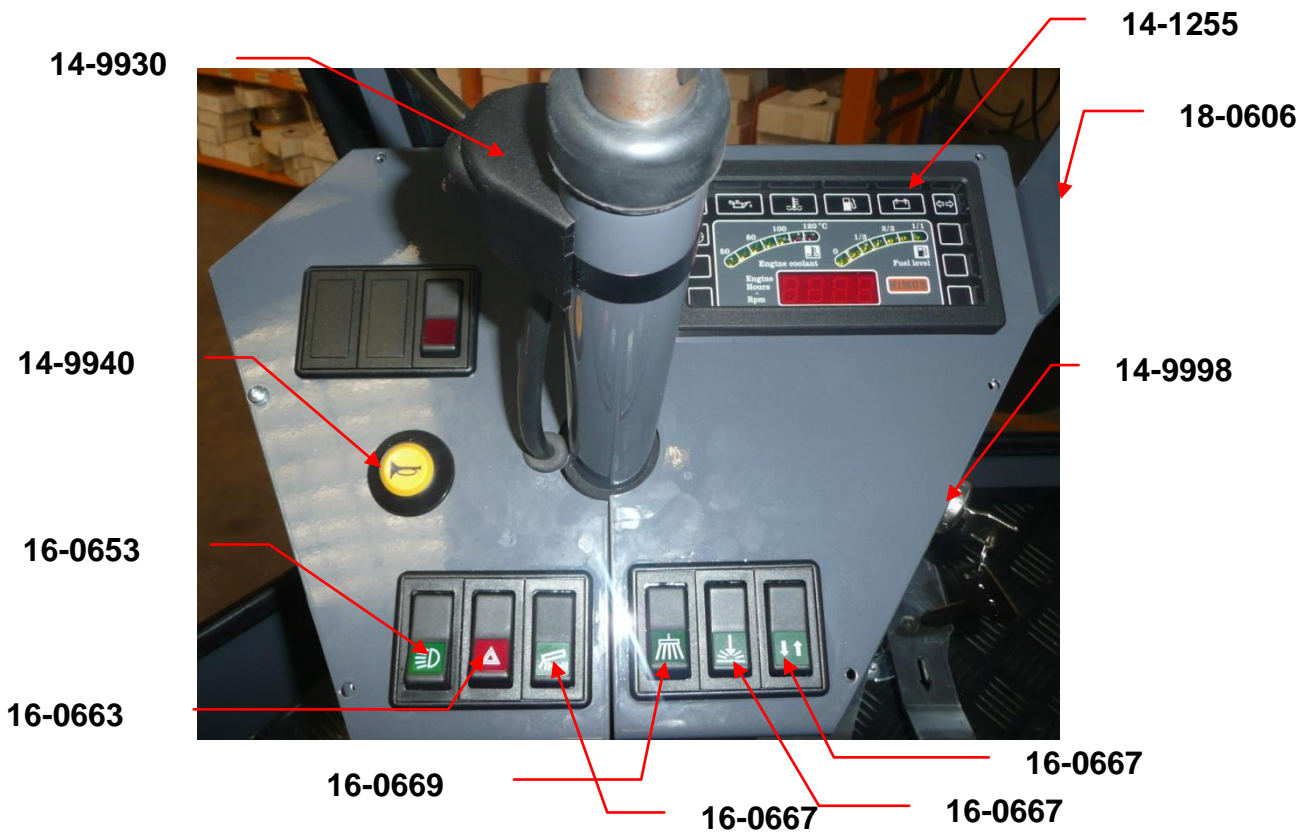
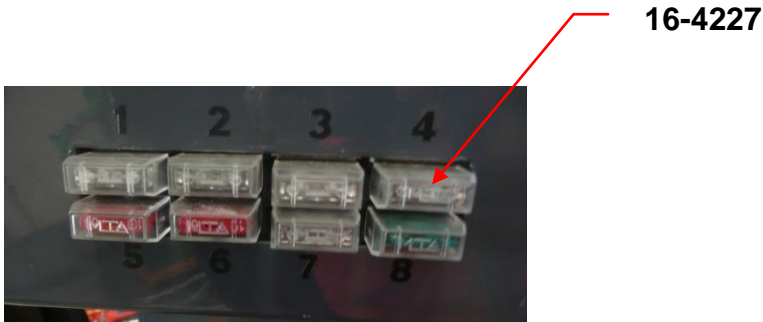




part code	Description
14-0968	Switch panel
14-1215	Heater valve
18-0351	Cable 1,5mm (heater) with handle
20-3036	Water hose 16mm
14-0924	Heather
14-2415	Ventilation breather
14-0930	Resistance switch
14-9989	Cabin trim
16-0669	Switch
16-0651	Switch
16-0665	Switch
16-9904	Radio cover plate
14-2703	Wiper motor



1.3 dashboard



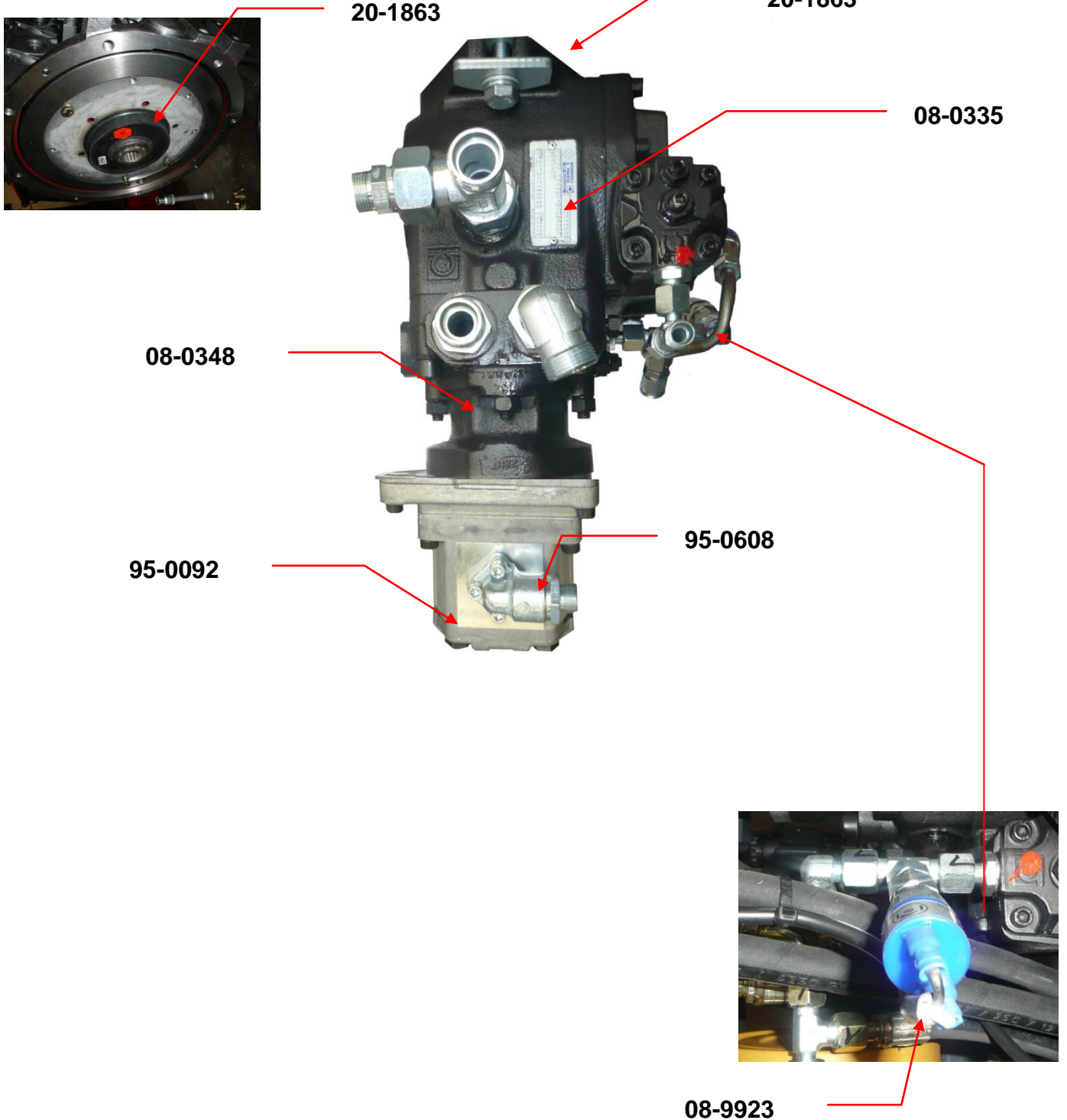


Partcode	Disription
16-0606	Accelerator control handle
16-1512	Relay
16-9956	Direction indicator relay
16-4227	Fuse 10A
16-4230	Fuse 25A
16-4233	Fuse 30A
14-1255	Module
14-9998	Inanition switch
14-9940	Claxon switch
16-0653	Switch
16-0665	Switch
16-0663	Switch
16-0669	Switch
16-0667	Switch
14-9924	Steering wheel.
14-9927	Steering wheel knob.
14-4236	Fuse 50A plate
18-0606	Gas handle
14-9930	Combi switch turning light, horn



2 Hydraulics

2.1 Pumps





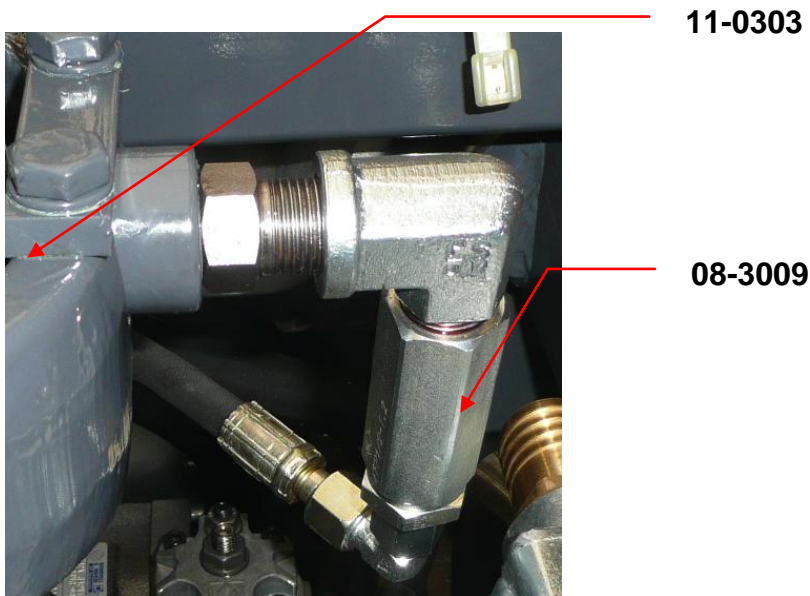
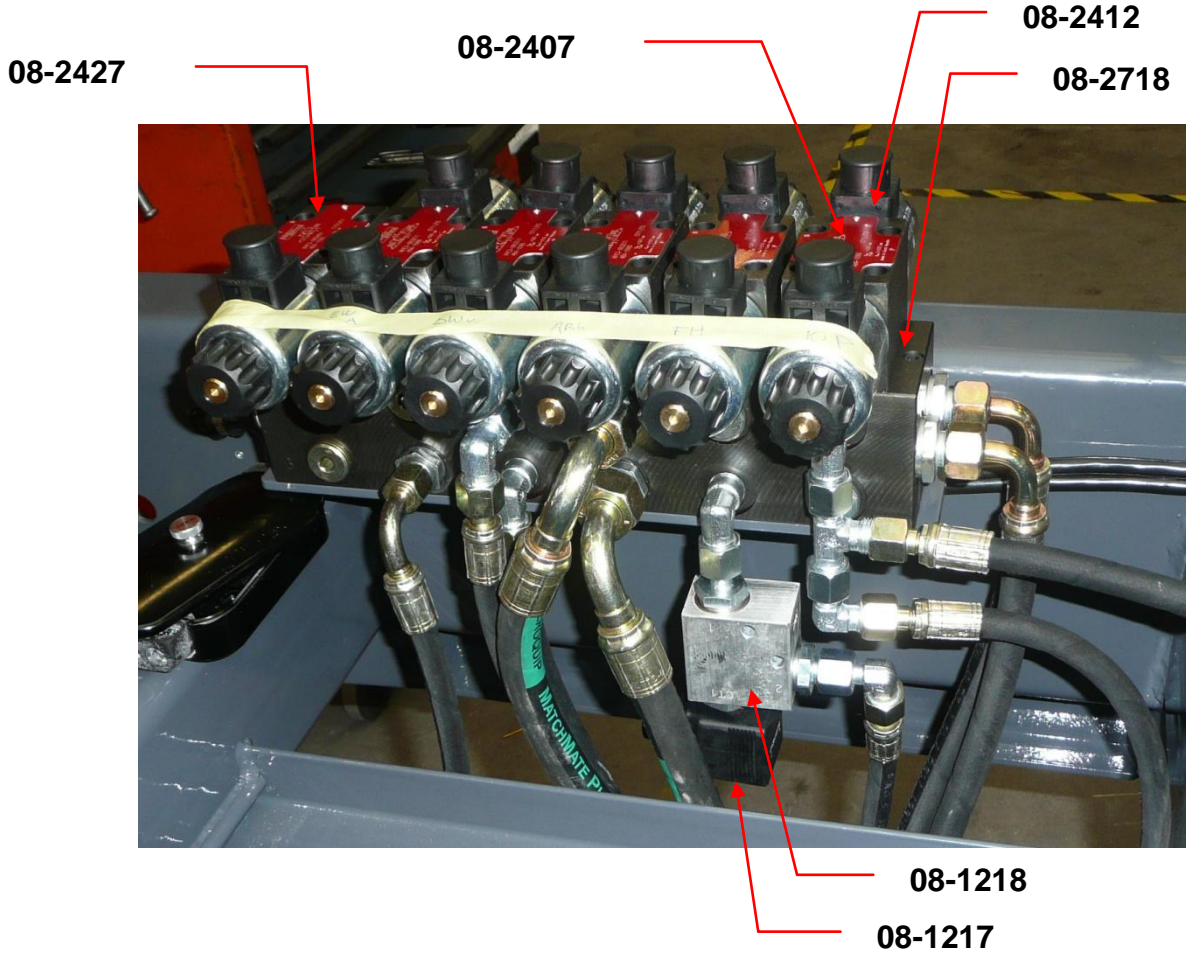
Parts Manual Mini-trac



Partcode	Disription
04-6918	Measurement point coupler
04-6915	Measurement point coupler
04-6906	Measurement point coupler
08-0335	Driving-pump DM-Trac
08-0403	Scavenging valve
08-9921	Pressure switch IP 0-2 bar rear light
08-0348	SAE flange with fill pump
20-1863	Coupling Engine/Pump
95-0092	Gear pump 6cc (steering)
95-0608	Pump flange 2x



2.2 Functions Implement and Front-lift





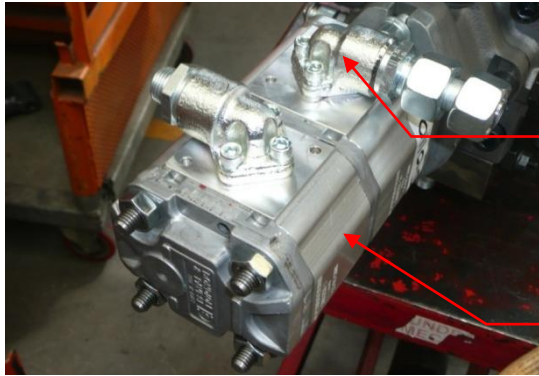
Parts Manual Mini-trac



Partcode	Disription
08-1217	Coil 2/2 valve 12VDC
08-1218	Valve 2/2 NC 12VDC (front lift)
08-1219	Valve 2/2 NO 12VDC
08-2403	Coil Valve NG6 12VDC
08-2427	Valve 4/3
08-2718	Mounting plate 6 pos.
08-2303	Endplate Valve NG3
08-3009	Pressure projection valve
11-0303	Tripper cylinder

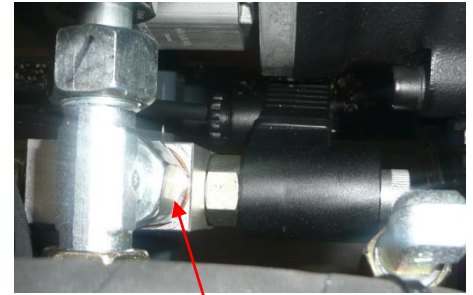


2.3 PTO Implement



95-0608

95-0110

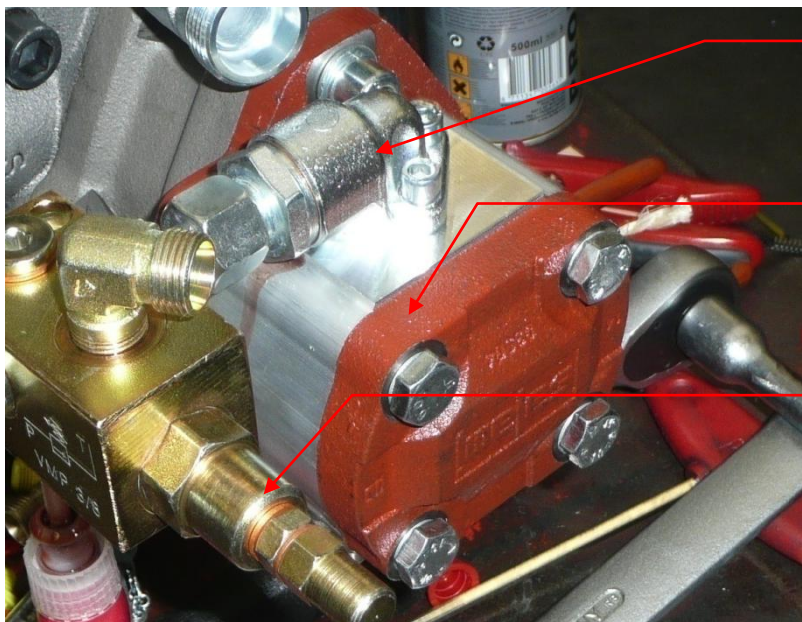


95-1239



95-0610

95-0607



95-0608

95-0092

08-1248



Parts Manual Mini-trac



Partcode	Disription
95-0608	Pump flange
95-0610	Pump flange
95-0607	Pump flange
95-0092	Pump
95-0110	Gear pump 14/6.7
08-1248	Pressure valve



2.4 Steering System



11-0654



11-1244

08-3904





Parts Manual Mini-trac

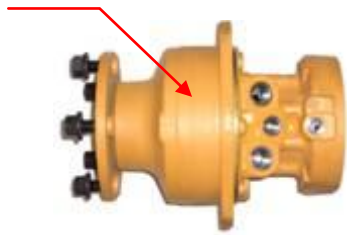


Partcode	Disription
08-3904	Orbitrol OSPC 80LS+prio
11-0654	Steering cylinder DM-Trac
11-1244	Seal kit cylinder 25/50
24-2727	Nut M24



2.5 Driving System

08-0906
08-0932

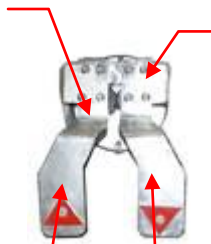


08-0937



08-0906
08-0932

14-9952



14S-9950



14S-9950

36C-6019

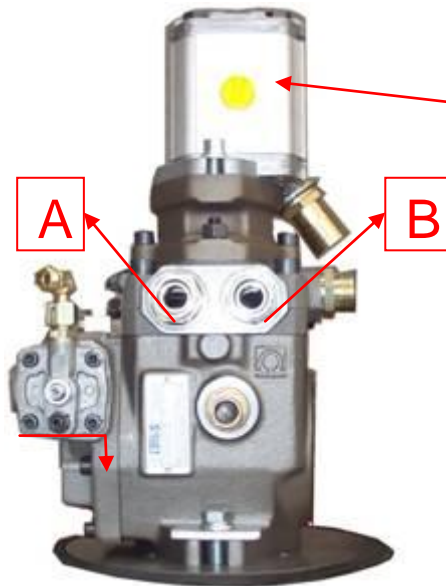


36C-6020



08-3318

08-0335

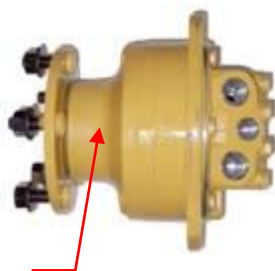


95-0092



08-1873

08-0916



08-0916



Parts Manual Mini-trac

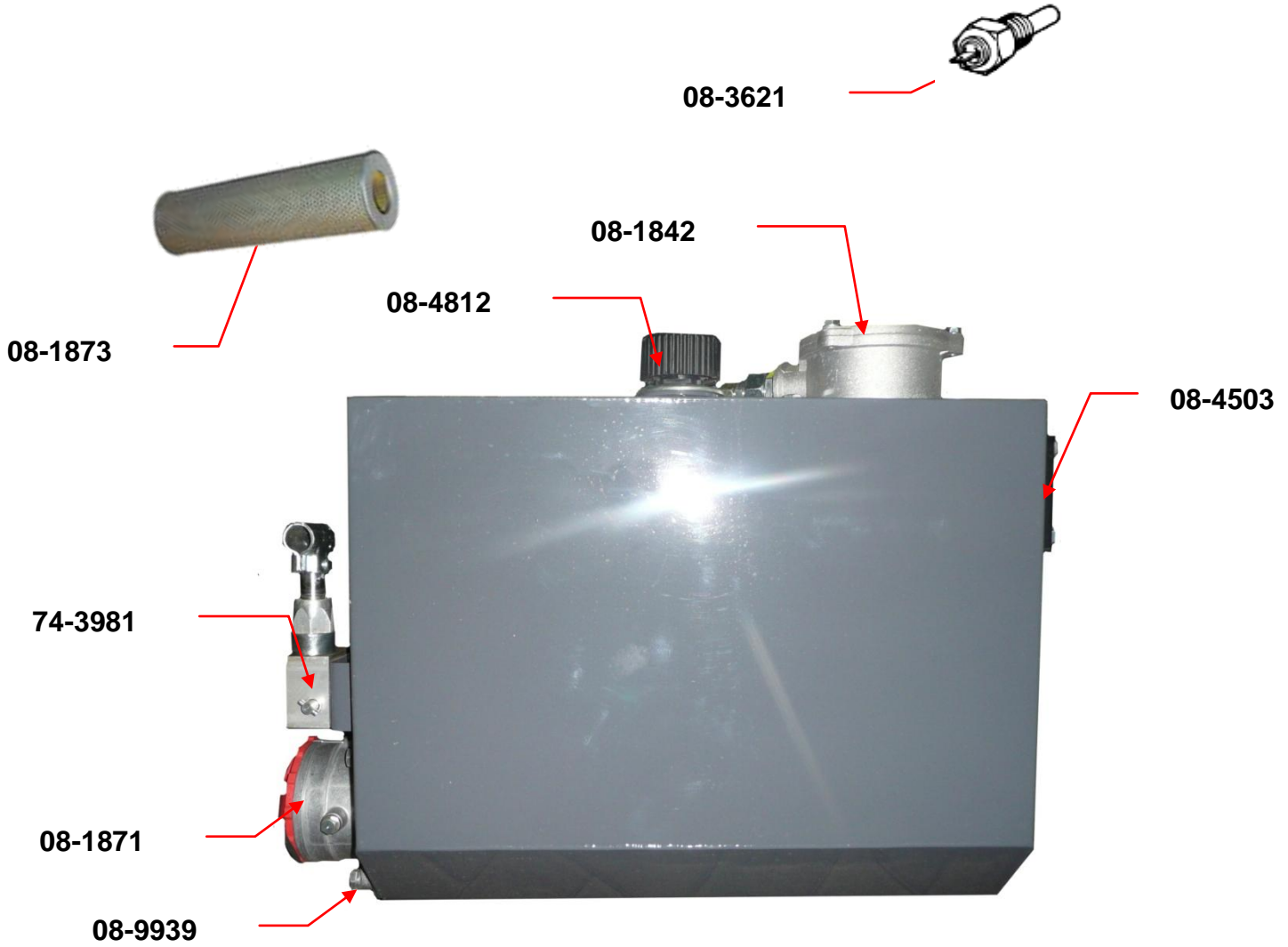


Partcode	Disription
08-0323	Driving-pump DM-Trac
08-0916	Weel-motor front (4WD)
08-0906	Weel-motor rear
08-1873	Hydraulic filter (suction/return)
14-9952	Driving pedal DM-Trac
95-0092	Pump 6cc(PTO)Complete
14S-9950	Bracket for driving pedal left / right
36C-6019	Driving pedal left side
36C-6020	Driving pedal right side
08-0937	Seal kit for wheel-motor with brake
08-0932	Weel-motor front (4WD) right
08-0931	Weel-motor front(4WD) left
08-3318	3 valve ball



3 Reservoirs and Cooling

3.1 Hydraulic-oil tank





Parts Manual Mini-trac



Partcode	Disription
08-1873	Hydraulic filter (suction/return)
08-1839	Hydraulic filter element return
08-3621	Temperature switch oil-tank
08-4503	Gauge glass
08-4812	Filler/Breather filter 7 mu
08-9939	Seal ring
08-1809	Hydraulic filter section
74-3981	Hand pump



3.2 Oil-Cooler

08-3612

08S-3609

08-3603





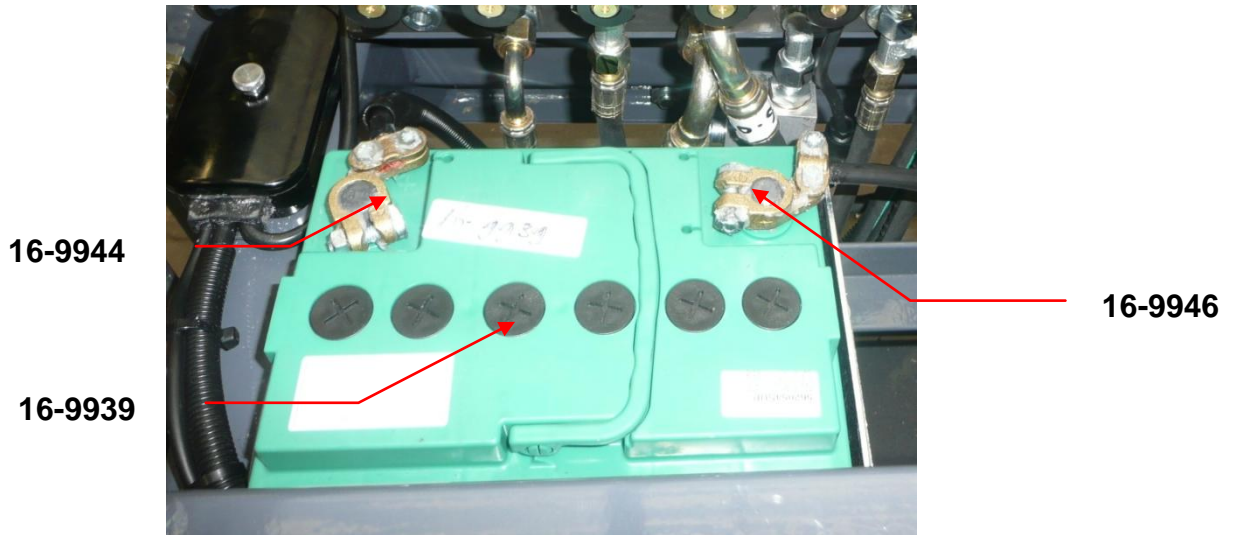
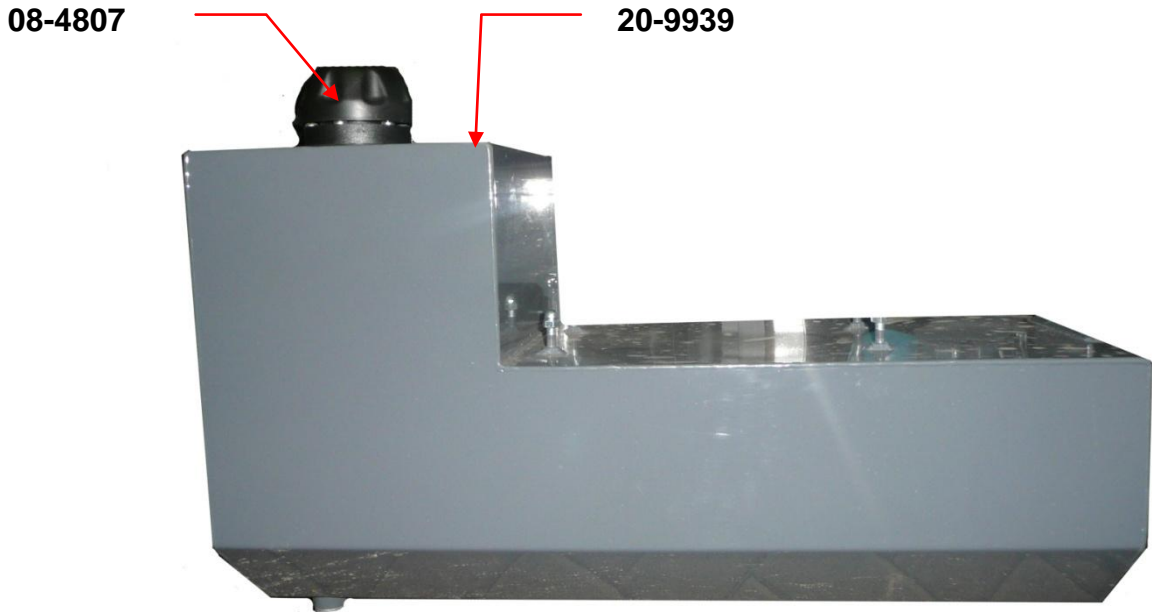
Parts Manual Mini-trac



Partcode	Disription
08-3603	Oil-cooler mini-trac
08-3612	Temperature switch oil-cooler
08S-3609	Oil-cooler ventilator



3.3 Fuel tank and battery





Parts Manual Mini-trac



Partcode	Disription
08-4807	Breather filler TR2
16-9944	Battery-terminal clamp -
16-9946	Battery-terminal clamp +
16-9939	Battery 12V 62 Ah
20-9939	Tank transmitter



4 Engine compartment

20-1221

20-1766



20-1214

20S-0309

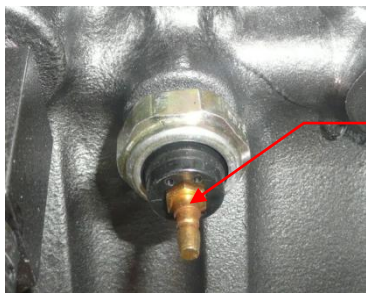
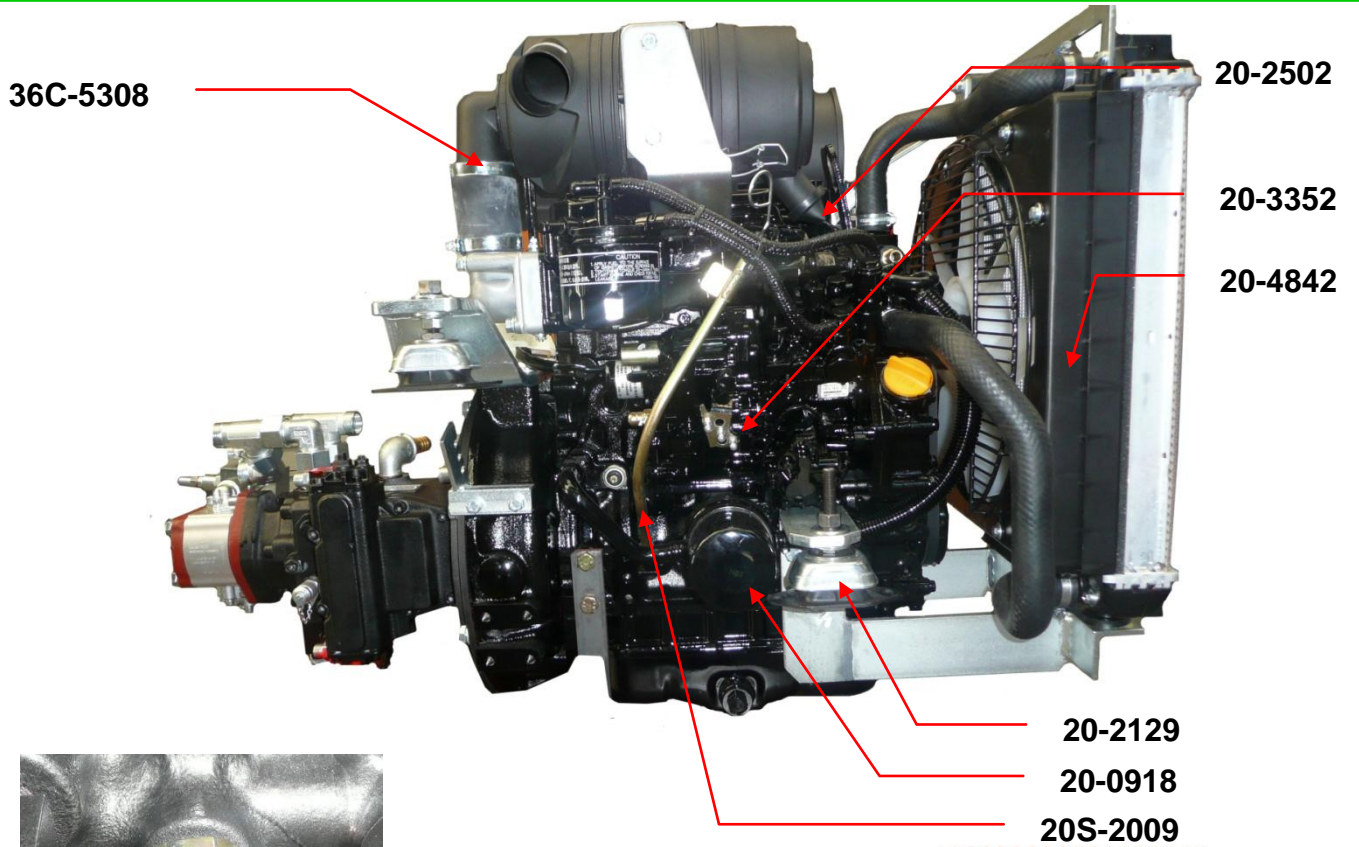


20-3066

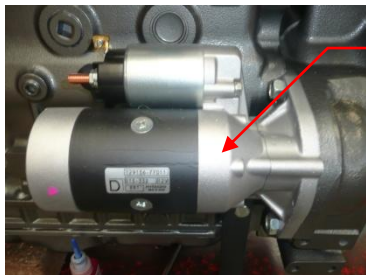
14-9939



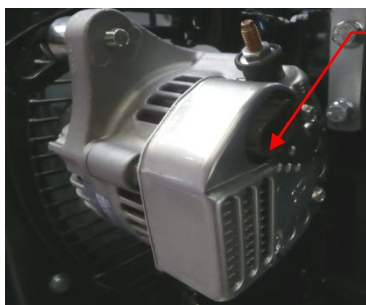
Partcode	Disription
Engine 3TNV88	
20S-0309	Air filter cartridge
20-1766	Fuel pump
20-3009	Fuel hose RM 8
20-3036	Water hose 16mm
20-0366	Air hose 50mm
20-1214	Fuel filter
20-1221	Water fuel filter
20-3066	Air filter hose
20-9932	Air flow sensor
20-0918	Motor oil filter
14-9939	Horn
20-0306	Air filter rain cap



20-8009



20-3912



20-4204



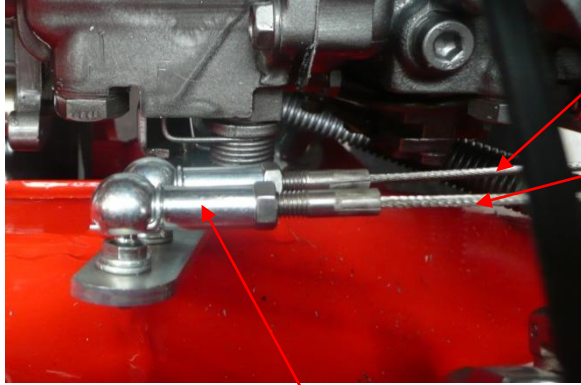
20-2129



Parts Manual Mini-trac



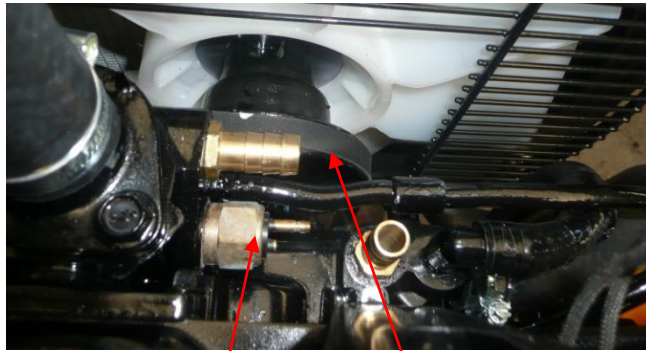
Partcode	Disription
Engine 3TNV88	
20-2129	Vibration damper (engine)
20-0310	Muffler Yanmar
20-3352	Engine Yanmar 3TNV88
20-4204	Generator Yanmar
36S-2002	Exhaust pipe mini
20-4825	Radiator
20-3912	Engine starter
20-8009	Oil pressure sensor
20-2485	Gasket
20-9970	Thermostat Yanmar



18-0472

18-0470

18-1203



20-1765

20-1552



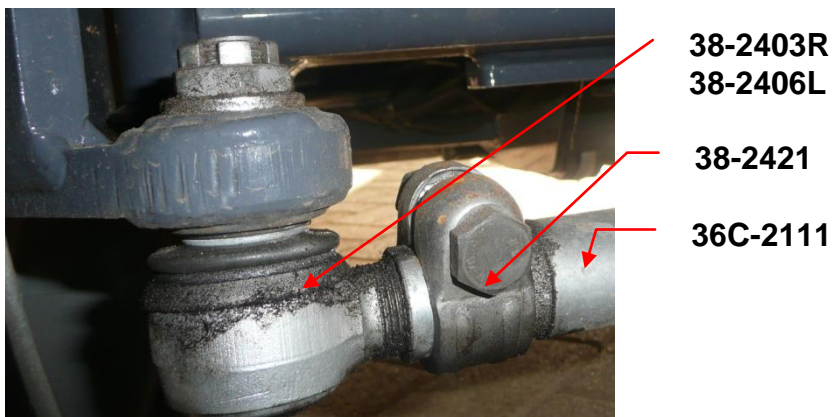
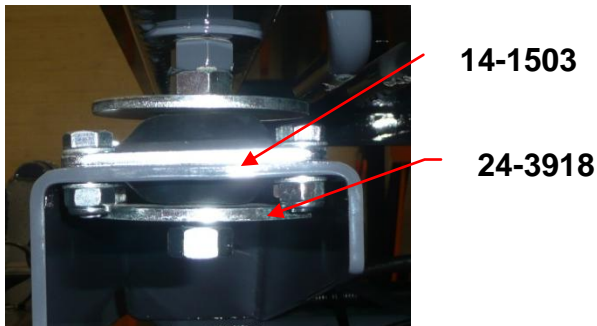
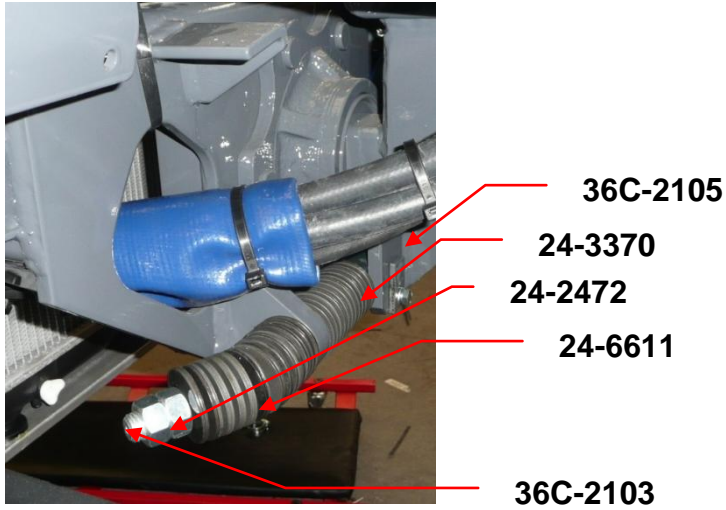


Partcode	Disription
Engine 3TNV88	
18-0472	Accelerator cable (hand)
18-0470	Accelerator cable (foot)
18-1203	Coupling ball M5
20-9941	Water temperature sensor
20-1552	V-belt Yanmer
20-1765	Water sensor max.



5 Chassis

5.1 Chassis Front

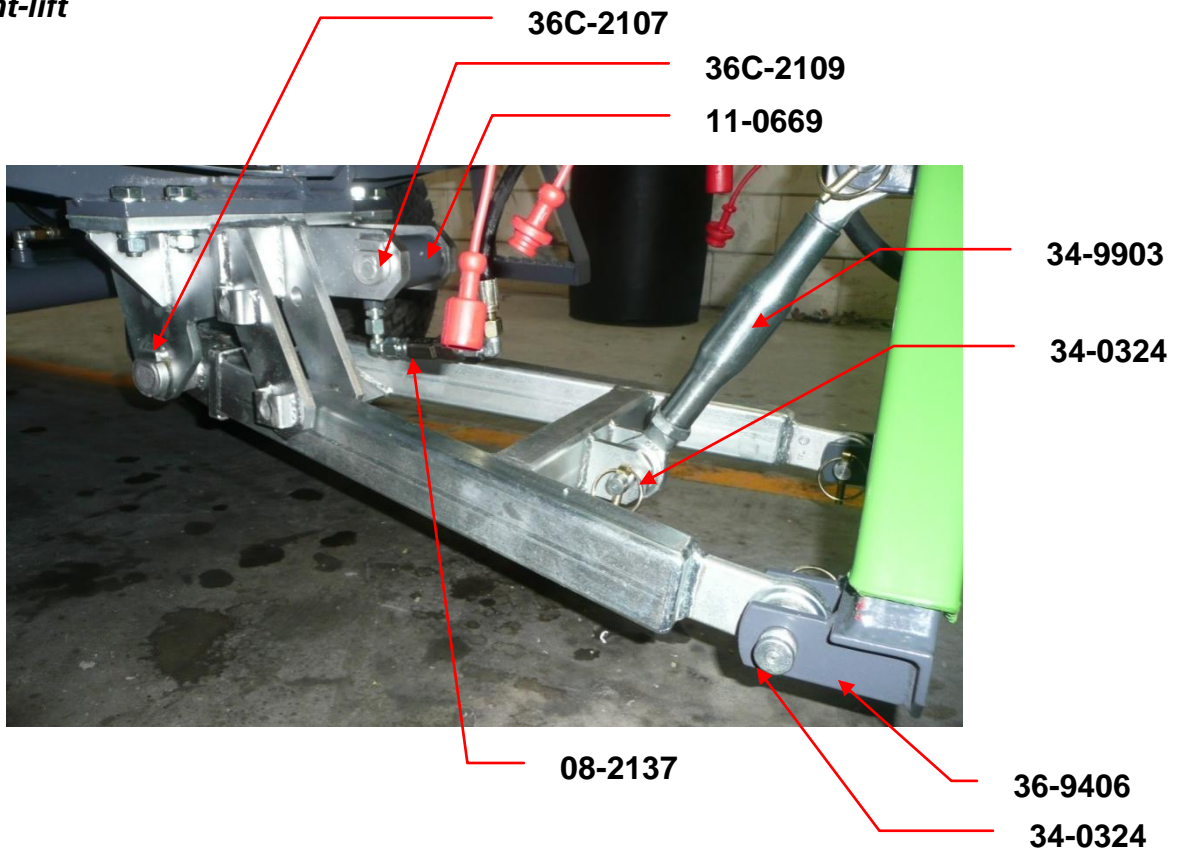




Partcode	Disription
14-1503	Vibration damper (Cabin)
38-1215	Wheel nut M14 x 1,5
38-0685	Tire 26 x 12.0-12 4ply/ ET-45
38-0686	Tire 26 x 12.0-12 8ply/ ET-45
38S-0685	Rim for 38-0685 and 38-0686
24-3370	Disk-spring torsion system
24-2472	Nut M18
24-6611	spring
24-3918	Sheet-metal ring M16
36-2105	Pin stabiliaste
38-2403	Linkage ball joint
38-2406	Linkage ball joint I
38-2421	Cramp
36C-2111	Column tube
36-2103	Pin stability DM-Trac 205
11-0903	Rubber joint



5.2 Front-lift





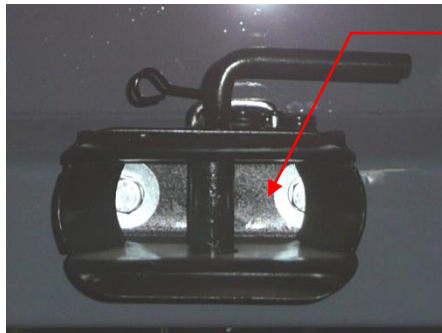
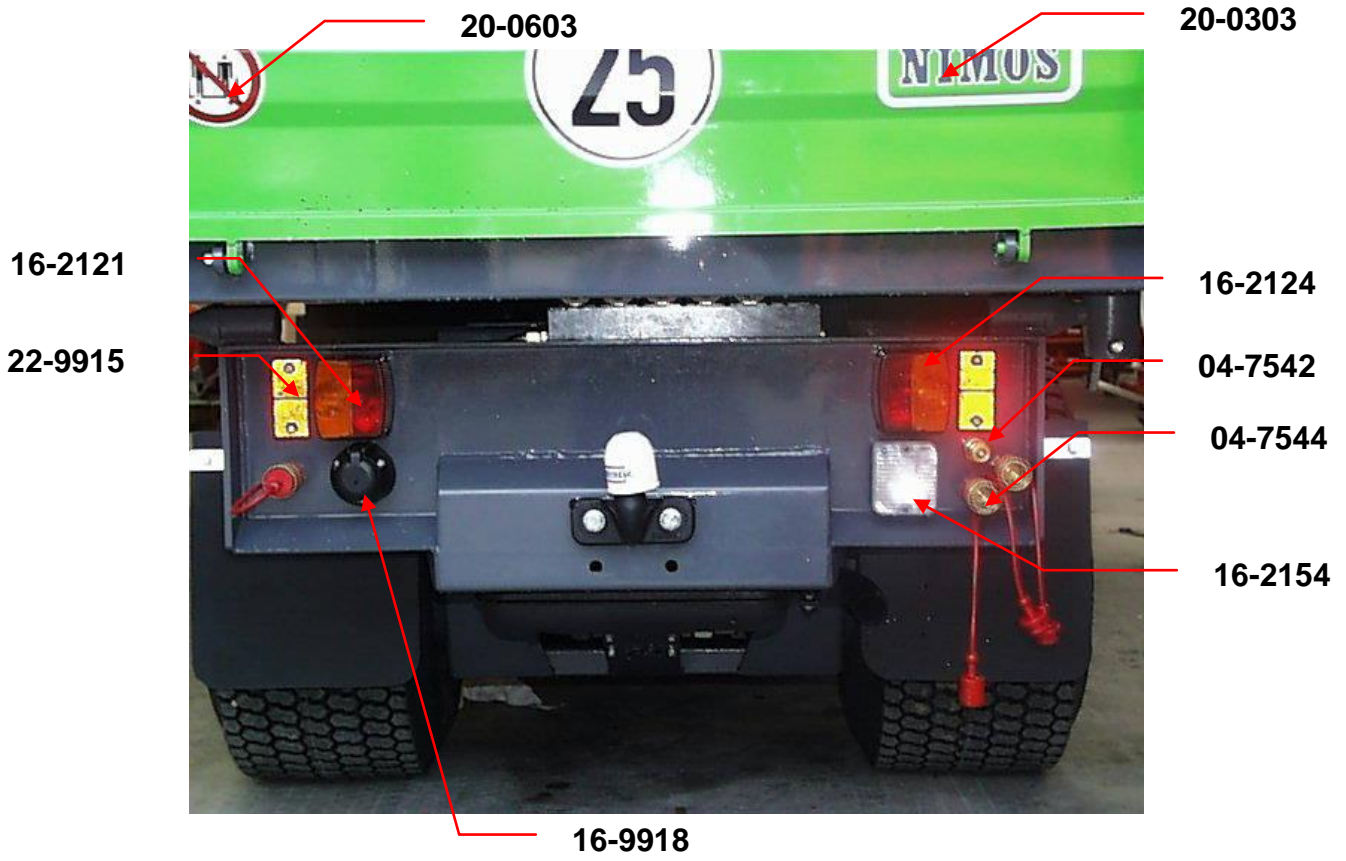
Parts Manual Mini-trac



Partcode	Disription
11-0669	Cylinder front lift
08-2137	Hand pressure-limiting valve
36C-2109	Front lift cylinder pin
36C-2107	Front lift pin
34-0324	Top link pin 19mm
36-9406	A-frame
11-1244	Seal kit cylinder 25/50
30-0912	Friction bearing



5.3 Chassis Rear

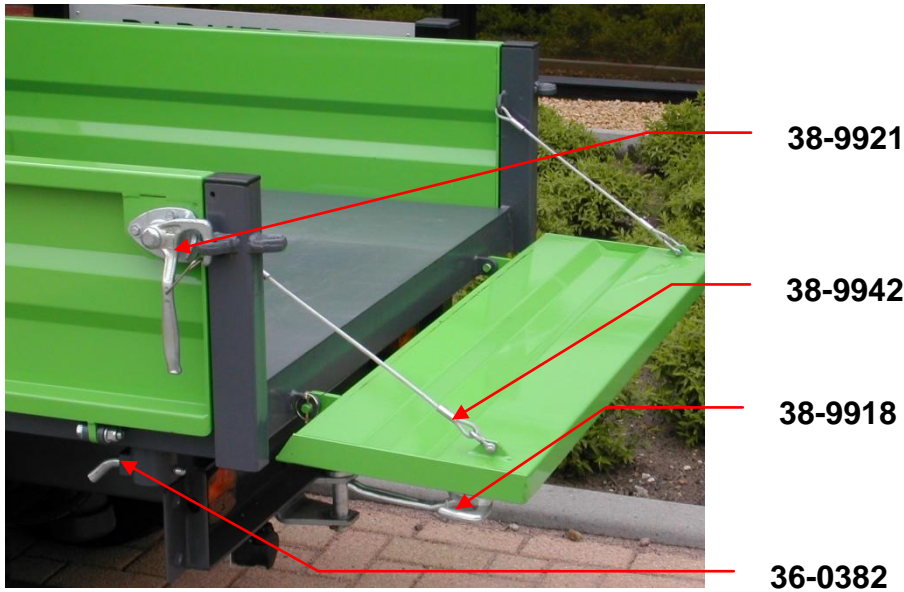




Partcode	Disription
04-7534	Quick coupling male 1/2"
04-7536	Quick coupling female 1/2"
04-7546	Dust plug 1/2
04-7548	Dust cap 1/4
04-7502	Quick coupling male 1/4"
04-7504	Quick coupling female 1/4"
04-7506	Dust plug 1/4
04-7508	Dust cap 1/4
16-2121	Rear-light L
16-2124	Rear light R
16-9918	Coupling plug 7pole (ligth)
20-2106	Damper body
22-0303	Sticker Nimos
20-0603	Sticker
16-2154	Rear light
34-9935	Rear coupling
38-9935	Rear coupling



5.4 cargo body





Parts Manual Mini-trac

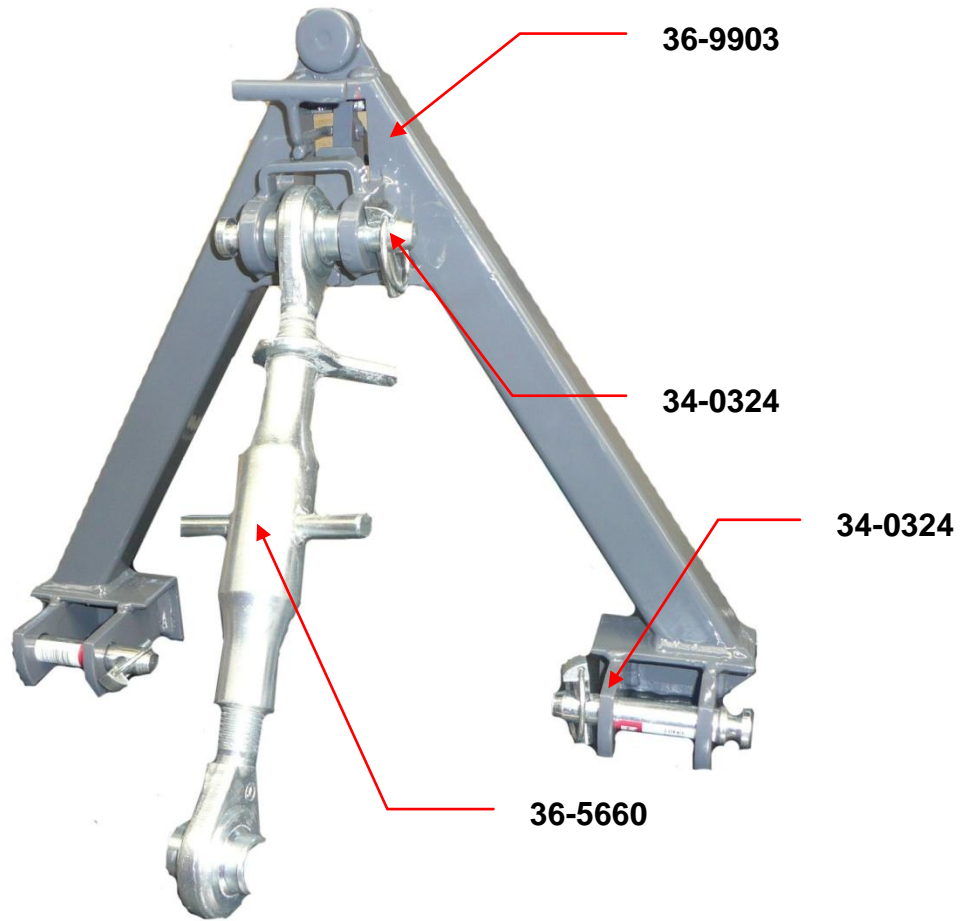


Partcode	Disription
38-0918	Latch lever R
38-9921	Latch lever L
38-9942	Steel cable
22-0920	Striping L
22-0921	Striping R
36-0380A	Joint ball L
36-0380B	Joint ball R
36-0382	Pin sets



5.5

A-Frame





Partcode	Disription
34-0324	Top link pin 19mm
34-0327	Top link pin 22mm
36-99003	A-frame Mini-trac
36C-5660	Top link A-frame



7. Fast Moving Parts

Partcode	Disription
08-4812	Filler/Breather filter 7 mu
08-1873	Hydraulic filter element (suction/return)
16-4227	Fuse 10A
16-4230	Fuse 25A
18-0472	Accelerator cable (hand)
18-0470	Accelerator cable (foot)
20S-0304	Air filter Yanmar
08-1809	Filter section
20-0918	Oil filter Yanmar
20-1214	Fuel filter Yanmar
20-1221	Washer fuel filter
08-1839	Hydraulic filter element return



Parts Manual Mini-trac

