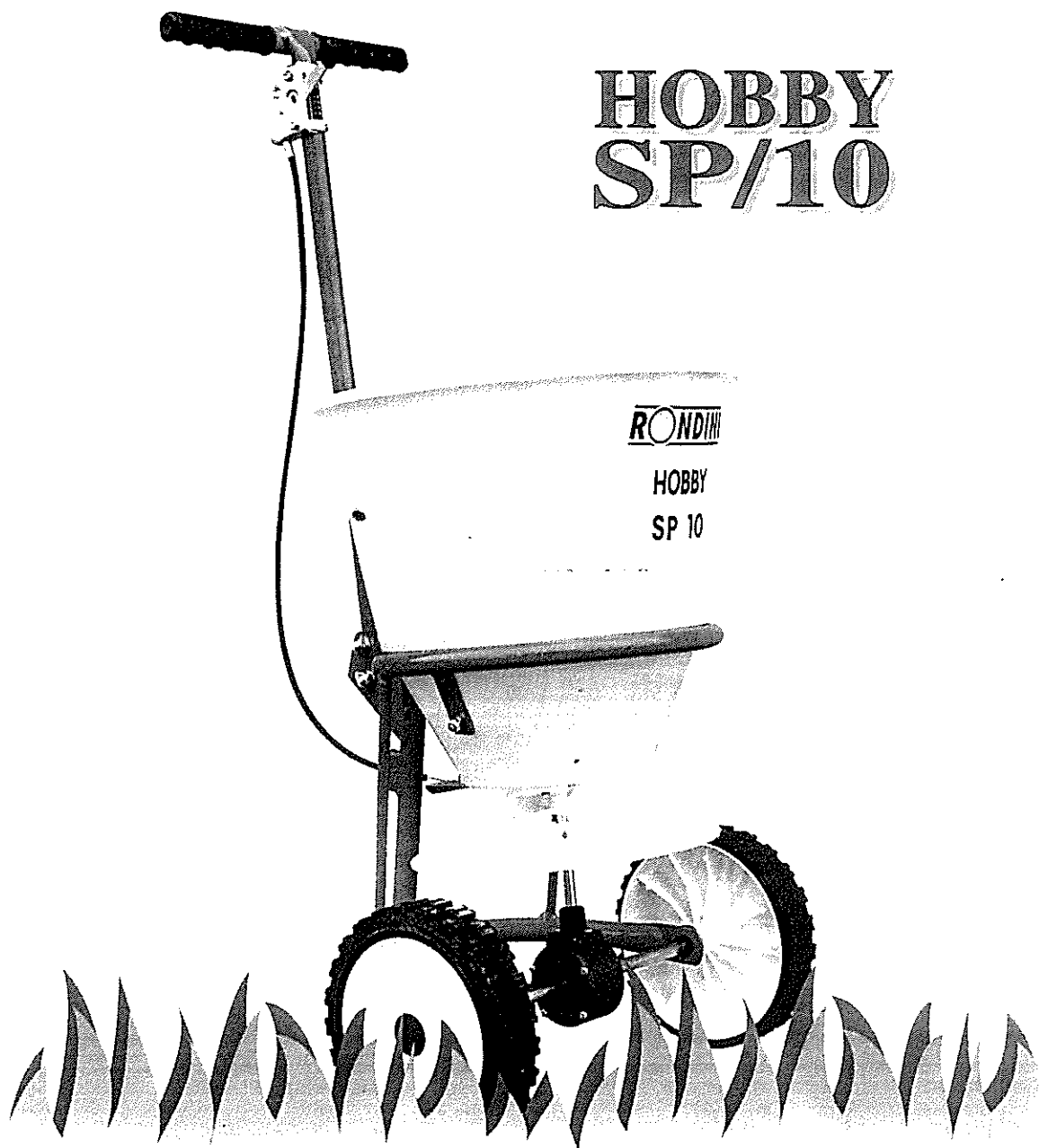


MANUALE PER L'IMPIEGO E LA MANUTENZIONE  
ELENCO RICAMBI  
OPERATING INSTRUCTIONS AND MAINTENANCE HANDBOOK  
LIST OF SPARE PARTS  
MANUEL D'EMPLOI ET D'ENTRETIEN  
LISTE DES PIÈCES DE RECHANGE  
BEDIENUNGS-UND GEBRAUCHSANLEITUNG  
ERSATZTEILLISTE  
MANUAL DE USO Y MANUTENCION  
LISTA DE REPUESTOS

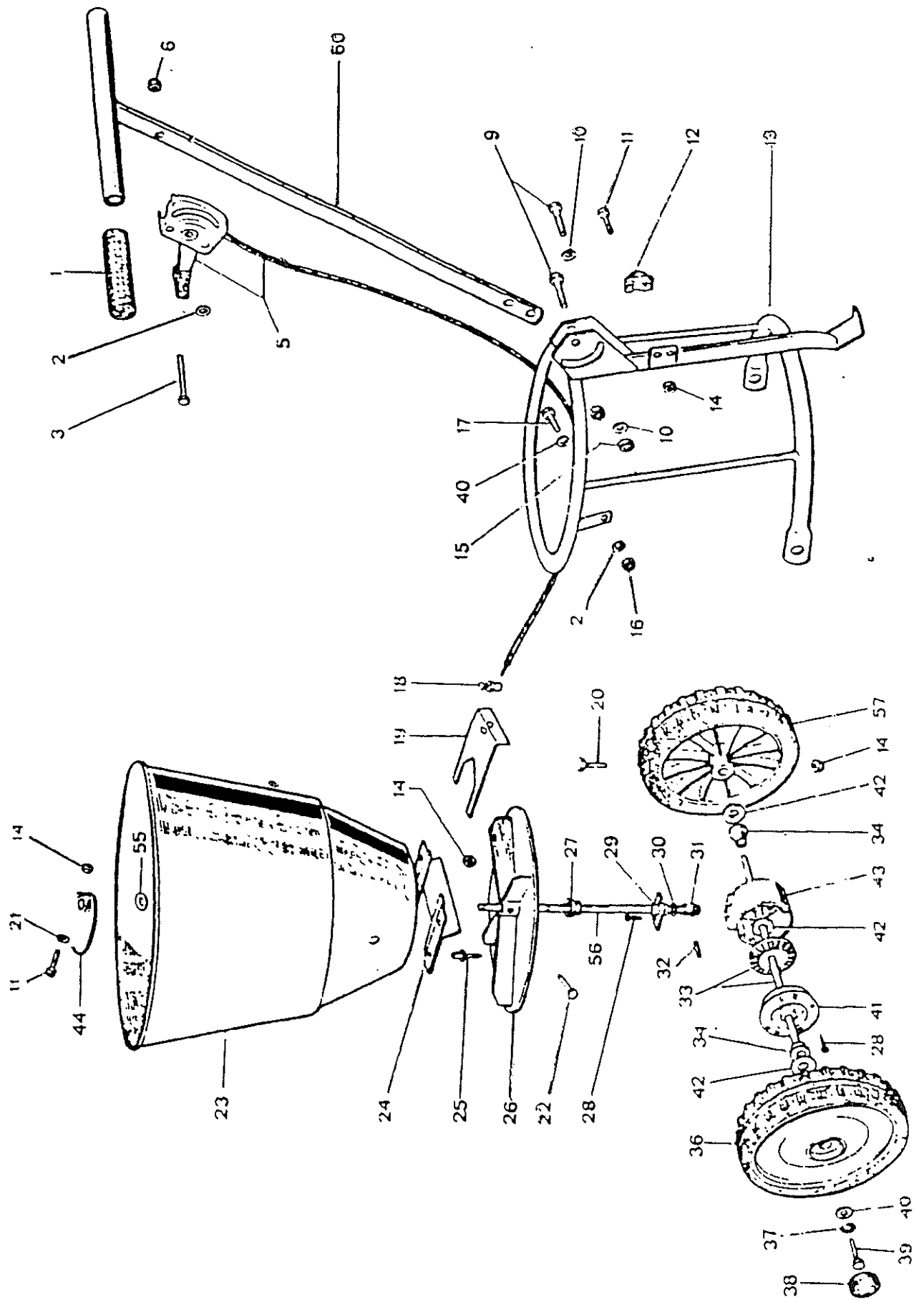


**HOBBY  
SP/10**

**RONDINI**  
COSTRUZIONI MACCHINE AGRICOLE

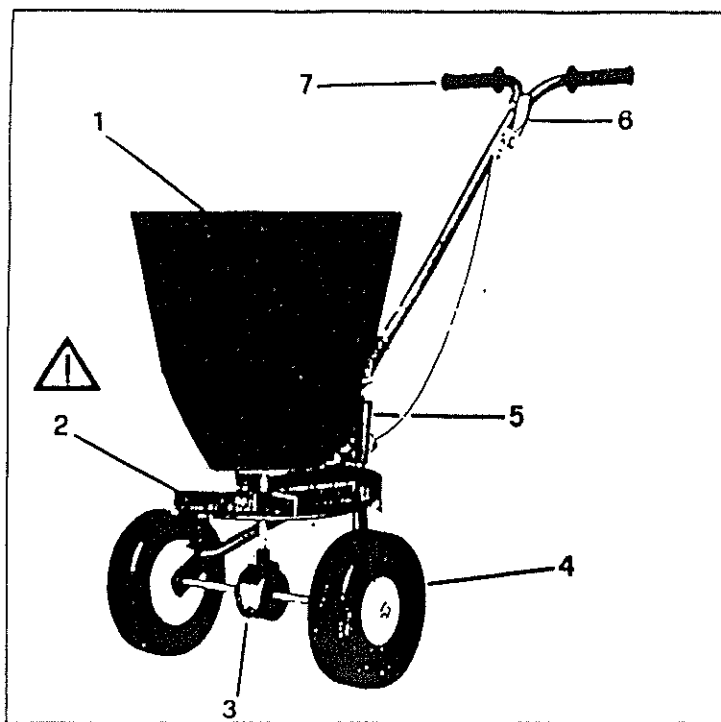
F.LLI RONDINI s.n.c. di Rondini Fabrizio & C.  
VIA PROVINCIALE SUD, 41/43  
42010 S. GIOVANNI - NOVELLARA (Reggio E.) - Italy  
Telefono (0522) 65.71.48 - Telefax (0522) 65.73.66

# SP 10



• COMPLESSIVO • ASSEMBLY DRAWING • VUE D'ENSEMBLE •  
• GESAMTZEICHUNG • SUMARIO •

|    |        |                      |                           |                       |                             |                          |
|----|--------|----------------------|---------------------------|-----------------------|-----------------------------|--------------------------|
| 1  | 586032 | Impugnatura          | Grip                      | Poignée               | Handgriff                   | Empuñadura               |
| 2  | 201006 | Rosetta 6x12         | Washer 25MM               | Rondelle              | Scheibe                     | Arandela                 |
| 3  | 221054 | Vite TE M4x30        | Screw M5x40               | Vis                   | Schraube                    | Tornillo                 |
| 5  | 641005 | Comando              | Control                   | Commande              | Schaltung                   | Mando                    |
| 6  | 213105 | Dado M5 block        | Nut                       | Ecrou                 | Mutter                      | Tuerca                   |
| 9  | 225133 | Vite TE M8x40        | Screw                     | Vis                   | Schraube                    | Tornillo                 |
| 10 | 201008 | Rosetta 8x17         | Washer                    | Rondelle              | Scheibe                     | Arandela                 |
| 11 | 221020 | VITE TE M4x20        | Screw                     | Vis                   | Schraube                    | Tornillo                 |
| 12 | 586803 | Fermacavo            | Cableclip                 | Serre-cable           | Kabelklemme                 | Sujetador de cable       |
| 13 | 370003 | Telaio SP10          | Frame                     | Châssis               | Rahmen                      | Armazón                  |
| 14 | 213004 | Dado M4 block        | Nut                       | Ecrou                 | Mutter                      | Tuerca                   |
| 15 | 213008 | Dado M8 block        | Nut                       | Ecrou                 | Mutter                      | Tuerca                   |
| 16 | 213006 | Dado M6 block        | Nut                       | Ecrou                 | Mutter                      | Tuerca                   |
| 17 | 225077 | Vite TE M6x20        | Screw                     | Vis                   | Schraube                    | Tornillo                 |
| 18 | 640701 | Morsetto             | Clamp                     | Borne                 | Klemme                      | Borne                    |
| 19 | 393005 | Portina              | Gate                      | Volet                 | Klappe                      | Portezuela               |
| 20 | 225529 | Vite TE M4x30        | Screw                     | Vis                   | Schraube                    | Tornillo                 |
| 21 | 201004 | Rosetta 4x9          | Washer                    | Rondelle              | Scheibe                     | Arandela                 |
| 22 | 225527 | Vite TE M4x25        | Screw                     | Vis                   | Schraube                    | Tornillo                 |
| 23 | 580705 | Vasca SP10           | Hopper                    | Bac                   | Trichter                    | Recipiente               |
| 24 | 584505 | Scivolo              | Chute                     | Glissière             | Rutsche                     | Deslizador               |
| 25 | 254176 | Rivetto 4.8x12       | Rivet                     | Rivet                 | Niete                       | Remache                  |
| 26 | 582504 | Disco SP10           | Disc                      | Disque                | Schleuderscheibe            | Disco                    |
| 27 | 583812 | Cuffia PVC           | PVC hood                  | Protecteur PVC        | Schutzkasten PVC            | Capucón PVC              |
| 28 | 234523 | Vite TC 3.5x13       | Screw                     | Vis                   | Schraube                    | Tornillo                 |
| 29 | 585057 | Coperchietto         | Small cover               | Couvercie             | Kappe                       | Tapa                     |
| 30 | 368419 | Hasamento            | Shim ring                 | Segment-raclour       | Zwischeniegscheibe          | Anillo de nivelación     |
| 31 | 317025 | Pignone              | Pinion                    | Pignon                | Ritzel                      | Piñon                    |
| 32 | 251062 | Spina El. 5x36       | Plug                      | Cheville              | Stift                       | Clavija                  |
| 33 | 372655 | Assale+Corona        | Axle+Crown                | Esssieu+Couronne      | Achse+Krone                 | Puente+Korona            |
| 34 | 583705 | Boccola              | Brushing                  | Douille               | Buchse                      | Casquillo                |
| 36 | 661396 | Ruota SP10 sx        | Wheel                     | Roue                  | Rad                         | Rueda                    |
| 37 | 202306 | Rosetta El. 6.4      | Washer                    | Rondelle              | Scheibe                     | Arandela                 |
| 38 | 661503 | Coprizzo             | Hubcap                    | Couvre-moyeu          | Nabendeckel                 | Tapacubos                |
| 39 | 225073 | Vite TE M6x12        | Screw                     | Vis                   | Schraube                    | Tornillo                 |
| 40 | 201903 | Rosetta 6.5x24       | Washer                    | Rondelle              | Scheibe                     | Arandela                 |
| 41 | 585055 | Coperchio            | Lid                       | Couvercle             | Deckel                      | Tapa                     |
| 42 | 368408 | Rasamento            | Shim ring                 | Segment-raclour       | Zwischeniegscheibe          | Anillo de nivelación     |
| 43 | 585005 | Scatola              | Case                      | Bollo                 | Gehäuse                     | Caja                     |
| 44 | 611726 | Agitatore            | Agitator                  | Agitateur             | Rührwerk                    | Agitador                 |
| 55 | 583813 | Rondella             | Washer                    | Rondelle              | Scheibe                     | Arandela                 |
| 56 | 311605 | Albero               | Shaft                     | Arbre                 | Welle                       | Eje                      |
| 57 | 661392 | Ruota SP10 forata dx | SP10 wheel with hole r.h. | Roue SP10 perforée D. | Rad SP10 mit Bohrung rechts | Rueda SP10 perforada dr. |
| 60 | 372005 | Stegola SP 10        | SP10 handlebars           | Mancheron SP10        | Holm SP 10                  | Manubrio SP10            |



- I -

- 1) Tramoggia
- 2) Disco spargitore
- 3) Gruppo rinvio
- 4) Ruote
- 5) Telaio
- 6) Leva indice
- 7) Stegola

- GB - USA -

- 1) Hopper
- 2) Spreading disc
- 3) Transfer box
- 4) Wheels
- 5) Frame
- 6) Scale lever
- 7) Handlebars

- F -

1. Trómiu
2. Plateau disque
3. Groupe de renvoi
4. Roues
5. Châssis
6. Levier commande
7. Mancherons

- D -

- 1 Trichter
- 2 Schleuderscheibe
- 3 Vorgelege
- 4 Räder
- 5 Rahmen
- 6 Verstellgradshebel
- 7 Sterzholm

- E -

- 1) Tolvas
- 2) Disco esparcidor
- 3) Grupo transmisión
- 4) Ruedas
- 5) Armazón
- 6) Palanca índice
- 7) Manubrio

**DATI TECNICI**  
**TECHNICAL SPECIFICATIONS**  
**DONNÉES TECHNIQUES**  
**TECHNISCHE DATEN**  
**DATOS TECNICOS**

|  |  | Mod.  | SP5   |                              | SP10                         |                              |
|--|--|---|---|------------------------------|------------------------------|------------------------------|
| Capacità tramoggia<br>Hopper capacity cu.ft<br>Capacité trémie<br>Trichterninhalt<br>Capacidad de la tolva |  | l.  | 10<br>0,35  |                              | 19<br>0,67                   |                              |
|  |  | kg (1,2)<br>lbs. (75)   | 12<br>26  |                              | 23<br>50                     |                              |
| Peso dell'attrezzo<br>Implement weight<br>Poids de l'outil<br>Gewicht<br>Peso del apero                    |  | kg.<br>lbs.   | 5<br>11   |                              | 6<br>13                      |                              |
| Dimensioni<br>Dimensions<br>Dimensions<br>Masse<br>Dimensiones   | Altezza<br>Height<br>Hauteur<br>Höhe<br>Altura   | cm.<br>inc.   | A<br>51<br>20   | B<br>30<br>11 <sup>3/4</sup> | A<br>63<br>24 <sup>3/4</sup> | B<br>42<br>16 <sup>1/2</sup> |
|  | Larghezza<br>Width<br>Largeur<br>Breite<br>Ancho   | cm.<br>ft.  | 36<br>14  | 36<br>14                     | 43<br>17                     | 37<br>14 <sup>1/2</sup>      |
|  | Lunghezza<br>Length<br>Longueur<br>Länge<br>Longitud   | cm<br>ft.   | 40<br>15 <sup>3/4</sup>   | 39<br>15 <sup>1/2</sup>      | 40<br>15 <sup>3/4</sup>      | 37<br>14 <sup>1/2</sup>      |
|  | Largh. spandimento<br>Spreading width<br>Largeur d'épandage<br>Streubreite<br>Ancho de esparciento | Granulati<br>Granules<br>Granulés<br>Granulak<br>Granulados<br>m.<br>ft.              | 1 + 3<br>3' 3" + 9' 10"   |                              |                              |                              |
|  |  | Polverulenti<br>Powders<br>Pulvérulents<br>Pulverförmig<br>Pulverulentos<br>m.<br>ft. | non consigliato<br>not recommended<br>pas conseillable<br>nicht empfohlen<br>desaconsejable |                              |                              |                              |

A Attrezzo montato  
 Implement mounted  
 Outil assemblé  
 Montiertes Gerät  
 Equipo montado

B Attrezzo smontato  
 Implement removed  
 Outil désassemblé  
 Zerlegtes Gerät  
 Equipo desmontado