

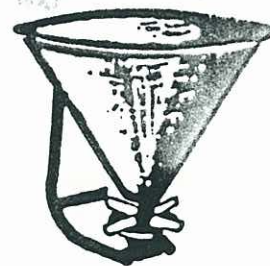
RONDINI F.lli s.n.c

COSTRUZIONE MACCHINE AGRICOLE

42010 S. GIOVANNI di NOVELLARA (RE) Italy

TEL. (0522) 657148

TELEFAX (0522) 657366



NYERE MODEL

SPARE PARTS CATALOG

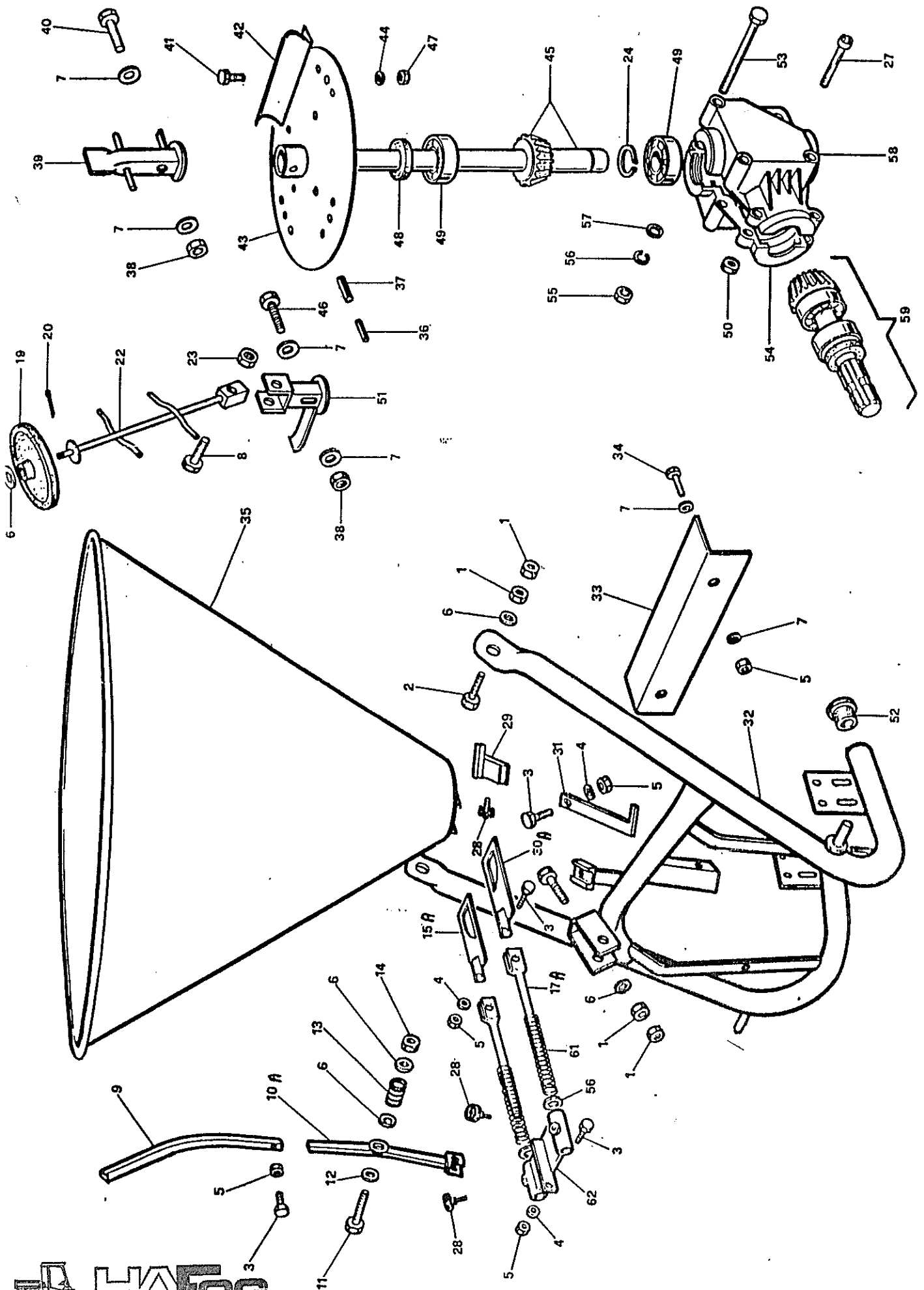
FERTILIZER SPREADER MOD. SP

150

Cod 04.150.00.01



Salg . Service . Fabrikation . Import
Lyngager 5-11 . 2605 Brøndby
Telefon 43 96 66 11 . Fax 43 26 66 24



HAFOG

Salg . Service . Fabrikation . Import
 Lyngager 5-11 2605 Brøndby
 Telefon 43 96 66 11 . Fax 43 26 66 24

| Pos. | Denomination | Q.ty | Code |
|------|----------------------------|------|----------------|
| | | | EDB-NR.: N-SPT |
| 1 | NUT M 12 | 6 | 04.000.01.00 |
| 2 | CYL. SCREW M 12 x 30 | 3 | 04.000.02.00 |
| 3 | HEX. SCREW M 8 x 25 | 5 | 04.000.03.00 |
| 4 | SPRING WASHER Ø 8 | 4 | 04.000.04.00 |
| 5 | NUT M 8 | 7 | 04.000.05.00 |
| 6 | WASHER Ø 14 x 28 | 5 | 04.000.06.00 |
| 7 | WASHER Ø 8 x 17 | 6 | 04.000.07.00 |
| 8 | HEX. SCREW M 10 x 50 8.8 | 1 | 04.000.08.00 |
| 9 | LEVER | 1 | 04.000.09.00 |
| 10A | LEVER BRACHET DG | 1 | 04.002.10.01 |
| 11 | HEX. SCREW M 12 x 80 | 1 | 04.000.11.00 |
| 12 | NYLON WASHER Ø 12 x 48 x 3 | 1 | 04.000.12.00 |
| 13 | SPRING | 1 | 04.000.13.00 |
| 14 | SELF-LOCKING NUT M 12 | 1 | 04.000.14.00 |
| 15A | L.S SHUTTER DG | 1 | 04.002.15.01 |
| 16 | JOINT EXTERNAL GUARD | 1 | 04.000.16.00 |
| 17A | TIE DG | 2 | 04.002.17.01 |
| 18 | JOINT INTERNAL GUARD | 1 | 04.000.18.00 |
| 19 | ARTICULATED STIRRER WHEEL | 1 | 04.000.19.00 |
| 20 | COTTER PIN Ø 4 | 1 | 04.000.20.00 |
| 21 | JOINT EXTERNAL FORK | 2 | 04.000.21.00 |
| 22 | ARTICULATED STIRRER BEAM | 1 | 04.000.22.00 |
| 23 | SELF-LOCKING NUT M 10 | 1 | 04.000.23.00 |
| 24 | SPRING RING Ø 25 | 1 | 04.150.24.01 |
| 25 | FORK WITH EXTERNAL TUBE | 1 | 04.000.25.00 |
| 26 | FORK WITH INTERNAL TUBE | 1 | 04.000.26.00 |
| 27 | ALLEN SCREW M 8 x 45 8.8 | 3 | 04.150.27.01 |
| 28 | HAND WHEEL M 8 x 15 | 3 | 04.000.28.00 |
| 29 | LEVER STOPPER | 1 | 04.000.29.00 |
| 30A | R.S SHUTTER DG | 1 | 04.002.30.01 |
| 31 | SCALED ROD DG | 1 | 04.002.31.01 |
| 32 | FRAME SP 150-250-300-400 | 1 | 04.150.32.01 |
| 32A | FRAME SP 500 | 1 | 04.150.32.51 |
| 33 | GUARD | 1 | 04.000.33.00 |
| 34 | HEX. SCREW M 8 x 20 | 2 | 04.000.34.00 |
| 35 | HOPPER SP 150 DG | 1 | 04.149.35.01 |
| 35A | HOPPER SP 250 DG | 1 | 04.250.35.01 |
| 35B | HOPPER SP 300 DG | 1 | 04.300.35.01 |
| 35C | HOPPER SP 400 DG | 1 | 04.400.35.01 |
| 35D | HOPPER SP 500 DG | 1 | 04.500.35.01 |
| 36 | SPRING PIN Ø 5 x 40 | 1 | 04.000.36.00 |
| 37 | SPRING PIN Ø 8 x 40 | 1 | 04.000.37.00 |
| 38 | SELF-LOCKING NUT M 8 | 1 | 04.000.38.00 |
| 39 | STATIONARY STIRRER | 1 | 04.000.39.00 |
| 40 | HEX. SCREW M 8 x 40 8.8 | 1 | 04.000.40.00 |
| 41 | HEX. SCREW M 6 x 14 | 8 | 04.000.41.00 |
| 42 | SPREADER WING | 4 | 04.000.42.00 |
| 43 | SPREADER DISC | 1 | 04.000.43.00 |
| 44 | SPRING WASHER Ø 6 | 8 | 04.000.44.00 |
| 45 | OUTGOING SHAFT | 1 | 04.150.45.01 |

| Pos. | Denomination | Q.ty | EDB-NR: N-SPT | |
|------|------------------------------|------|---------------|--|
| | | | Code | |
| 46 | HEX. SCREW M 8 x 45 8.8 | 1 | 04.000.46.00 | |
| 47 | NUT M 6 | 8 | 04.000.47.00 | |
| 48 | SEAL RING 25 x 37 x 5 | 1 | 04.150.48.01 | |
| 49 | BEARING 6205 | 2 | 04.150.49.01 | |
| 50 | NUT M 8 5588 | 3 | 04.150.50.01 | |
| 51 | ARTICULATED STIRRER | 1 | 04.000.51.00 | |
| 52 | RUBBER CAP 060 | 2 | 04.000.52.00 | |
| 53 | HEX. SCREW M 10 x 110 | 3 | 04.000.53.00 | |
| 54 | L.S HALF BOX L 150 | 1 | 04.150.54.01 | |
| 55 | NUT M 10 | 3 | 04.000.55.00 | |
| 56 | SPRING WASHER Ø 10 | 3 | 04.000.56.00 | |
| 57 | WASHER Ø 10 x 21 | 5 | 04.000.57.00 | |
| 58 | R.S HALF BOX L 150 | 1 | 04.150.58.00 | |
| 59 | INGOING SHAFT | 1 | 04.150.59.01 | |
| 60 | SPIDER | 2 | 04.000.60.00 | |
| 61 | SPRING'S TIE DG | 2 | 04.002.61.00 | |
| 62 | TIE ATTACHMENT PLATE DG | 1 | 04.002.62.00 | |
| | JOINT ASSEMBLY | 1 | 04.150.70.00 | |
| | GEAR BOX ASSEMBLY | 1 | 04.150.71.01 | |
| | ARTICULATED STIRRER ASSEMBLY | 1 | 04.150.72.00 | |
| | BAFFLE PLATE - SPREDEPLADE | 1 | 80.04.150.01 | |



Salg . Service . Fabrikation . Import
 Lyngager 5-11 2605 Brøndby
 Telefon 43 96 66 11 . Fax 43 26 66 24

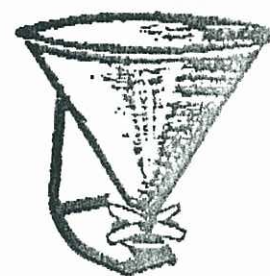
RONDINI F.lli s.n.c

COSTRUZIONE MACCHINE AGRICOLE

42010 S. GIOVANNI di NOVELLARA (RE) Italy

TEL. (0522) 657148

TELEFAX (0522) 657366



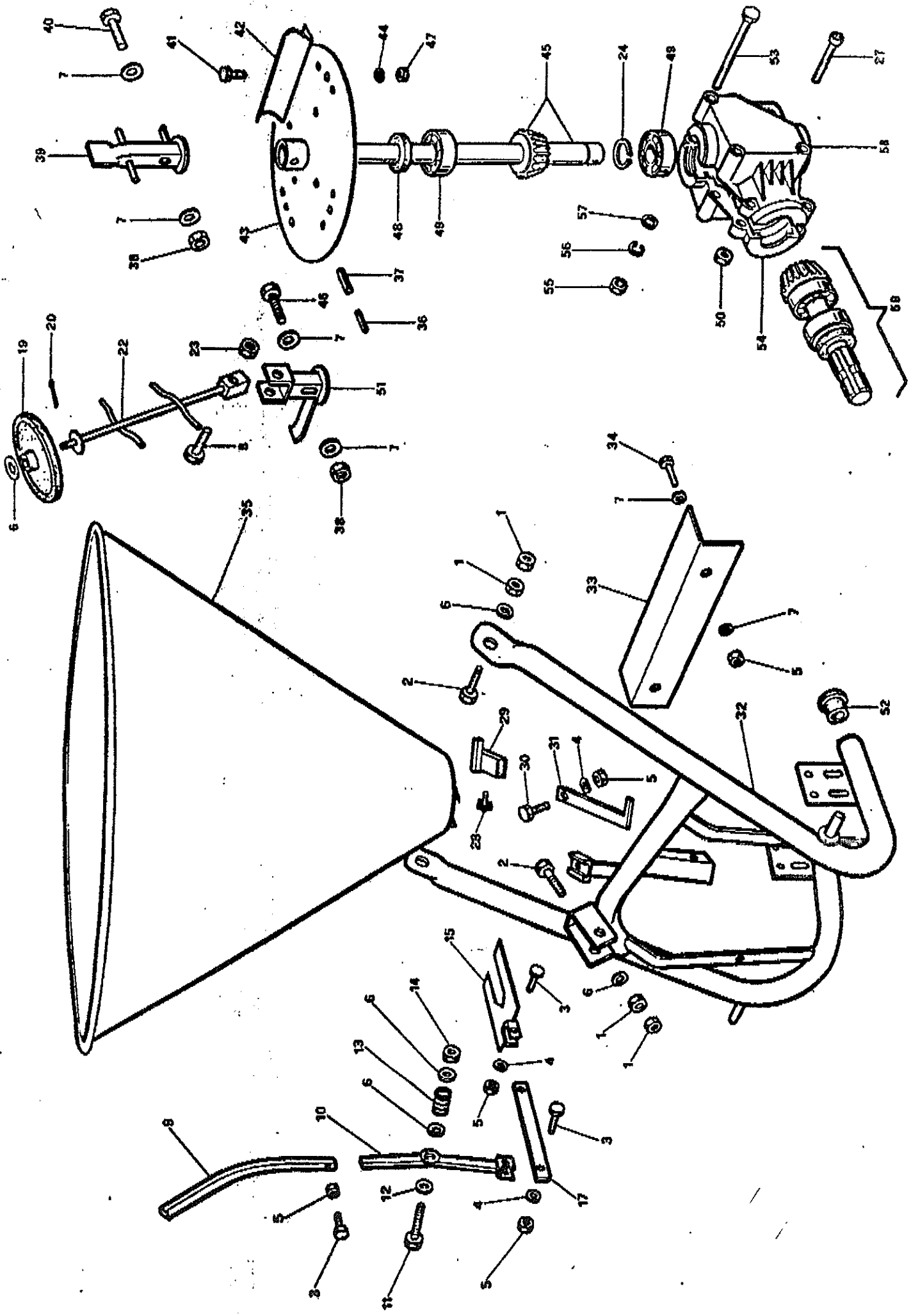
FELDRE MODEL

SPARE PARTS CATALOG

FERTILIZER SPREADER MOD. **SP**

SP 150

Cod 04.150.00.00



| Pos. | Denomination | Q.ty | EDB-NR. N-SPT Code |
|------|----------------------------|------|-----------------------|
| 1 | NUT M 12 | 6 | 04.000.01.00 |
| 2 | CYL. SCREW M 12 x 30 | 3 | 04.000.02.00 |
| 3 | HEX. SCREW M 8 x 25 | 3 | 04.000.03.00 |
| 4 | SPRING WASHER Ø 8 | 3 | 04.000.04.00 |
| 5 | NUT M 8 | 6 | 04.000.05.00 |
| 6 | WASHER Ø 14 x 28 | 5 | 04.000.06.00 |
| 7 | WASHER Ø 8 x 17 | 6 | 04.000.07.00 |
| 8 | HEX. SCREW M 10 x 50 8.8 | 1 | 04.000.08.00 |
| 9 | LEVER | 1 | 04.000.09.00 |
| 10 | LEVER BRACHET | 1 | 04.000.10.00 |
| 11 | HEX. SCREW M 12 x 80 | 1 | 04.000.11.00 |
| 12 | NYLON WASHER Ø 12 x 48 x 3 | 1 | 04.000.12.00 |
| 13 | SPRING | 1 | 04.000.13.00 |
| 14 | SELF-LOCKING NUT M 12 | 1 | 04.000.14.00 |
| 15 | SHUTTER | 1 | 04.000.15.00 |
| 16 | JOINT EXTERNAL GUARD | 1 | 04.000.16.00 |
| 17 | TIE | 1 | 04.000.17.00 |
| 18 | JOINT INTERNAL GUARD | 1 | 04.000.18.00 |
| 19 | ARTICULATED STIRRER WHEEL | 1 | 04.000.19.00 |
| 20 | COTTER PIN Ø 4 | 1 | 04.000.20.00 |
| 21 | JOINT EXTERNAL FORK | 2 | 04.000.21.00 |
| 22 | ARTICULATED STIRRER BEAM | 1 | 04.000.22.00 |
| 23 | SELF-LOCKING NUT M 10 | 1 | 04.000.23.00 |
| 24 | SPRING RING Ø25 | 1 | 04.150.24.01 |
| 25 | FORK WITH EXTERNAL TUBE | 1 | 04.000.25.00 |
| 26 | FORK WITH INTERNAL TUBE | 1 | 04.000.26.00 |
| 27 | ALLEN SCREW M 8 x 45 8.8 | 3 | 04.150.27.01 |
| 28 | HAND WHEEL M 8 x 15 | 1 | 04.000.28.00 |
| 29 | LEVER STOPPER | 1 | 04.000.29.00 |
| 30 | HEX. SCREW M 8 x 30 | 1 | 04.000.30.00 |
| 31 | SCALED ROD | 1 | 04.000.31.00 |
| 32 | FRAME SP 150-250-300-400 | 1 | 04.150.32.01 |
| 32a | FRAME SP 500 | 1 | 04.150.32.51 |
| 33 | GUARD | 1 | 04.000.33.00 |
| 34 | HEX. SCREW M 8 x 20 | 2 | 04.000.34.00 |
| *35 | HOPPER SP 150 | 1 | 04.149.35.00 |
| 35a | HOPPER SP 250 | 1 | 04.250.35.00 |
| 35b | HOPPER SP 300 | 1 | 04.300.35.00 |
| 35c | HOPPER SP 400 | 1 | 04.400.35.00 |
| 35d | HOPPER SP 500 | 1 | 04.500.35.00 |
| 36 | SPRING PIN Ø 5 x 40 | 1 | 04.000.36.00 |
| 37 | SPRING PIN Ø 8 x 40 | 1 | 04.000.37.00 |
| 38 | SELF-LOCKING NUT M 8 | 1 | 04.000.38.00 |
| 39 | STATIONARY STIRRER | 1 | 04.000.39.00 |
| 40 | HEX. SCREW M 8 x 40 8.8 | 1 | 04.000.40.00 |
| 41 | HEX. SCREW M 6 x 14 | 8 | 04.000.41.00 |
| 42 | SPREADER WING | 4 | 04.000.42.00 |
| 43 | SPREADER DISC | 1 | 04.000.43.00 |
| 44 | SPRING WASHER Ø 6 | 8 | 04.000.44.00 |
| 45 | OUTGOING SHAFT | 1 | 04.150.45.01 |

| Pos. | Denomination | Q. ty | Code | EDB-NR.: N-SPT |
|------|---------------------------------|-------|--------------|------------------------|
| 46 | HEX. SCREW M 8 x 45 8.8. | 1 | 04.000.46.00 | |
| 47 | NUT M 6 | 8 | 04.000.47.00 | |
| 48 | SEAL RING 25 x 37 x 5 | 1 | 04.150.48.01 | |
| 49 | BEARING 6205 | 2 | 04.150.49.01 | |
| 50 | NUT M 8 5588 | 3 | 04.150.50.01 | |
| 51 | ARTICULATED STIRRER | 1 | 04.000.51.00 | |
| 52 | RUBBER CAP 060 | 2 | 04.000.52.00 | |
| 53 | HEX. SCREW M 10 x 110 | 3 | 04.000.53.00 | |
| 54 | LS HALF BOX L150 | 1 | 04.150.54.01 | |
| 55 | NUT M 10 | 3 | 04.000.55.00 | |
| 56 | SPRING WASHER Ø 10 | 3 | 04.000.56.00 | |
| 57 | WASHER Ø 10 x 21 | 3 | 04.000.57.00 | |
| 58 | R.S HALF BOX L150 | 1 | 04.150.58.00 | |
| 59 | INGOING SHAFT | 1 | 04.150.59.01 | |
| 60 | SPIDER | 2 | 04.000.60.00 | |
| | JOINT ASSEMBLY | 1 | 04.150.70.00 | |
| | GEAR BOX ASSEMBLY | 1 | 04.150.71.01 | |
| | *ARTICULATED STIRRER ASSEMBLY | 1 | 04.150.72.00 | |
| | BAFFLE PLATE <i>Spede plade</i> | 1 | 80.04.150.01 | |
| | * <i>Kompl. omrøret</i> | 1 | | <i>N-SPT 041507200</i> |