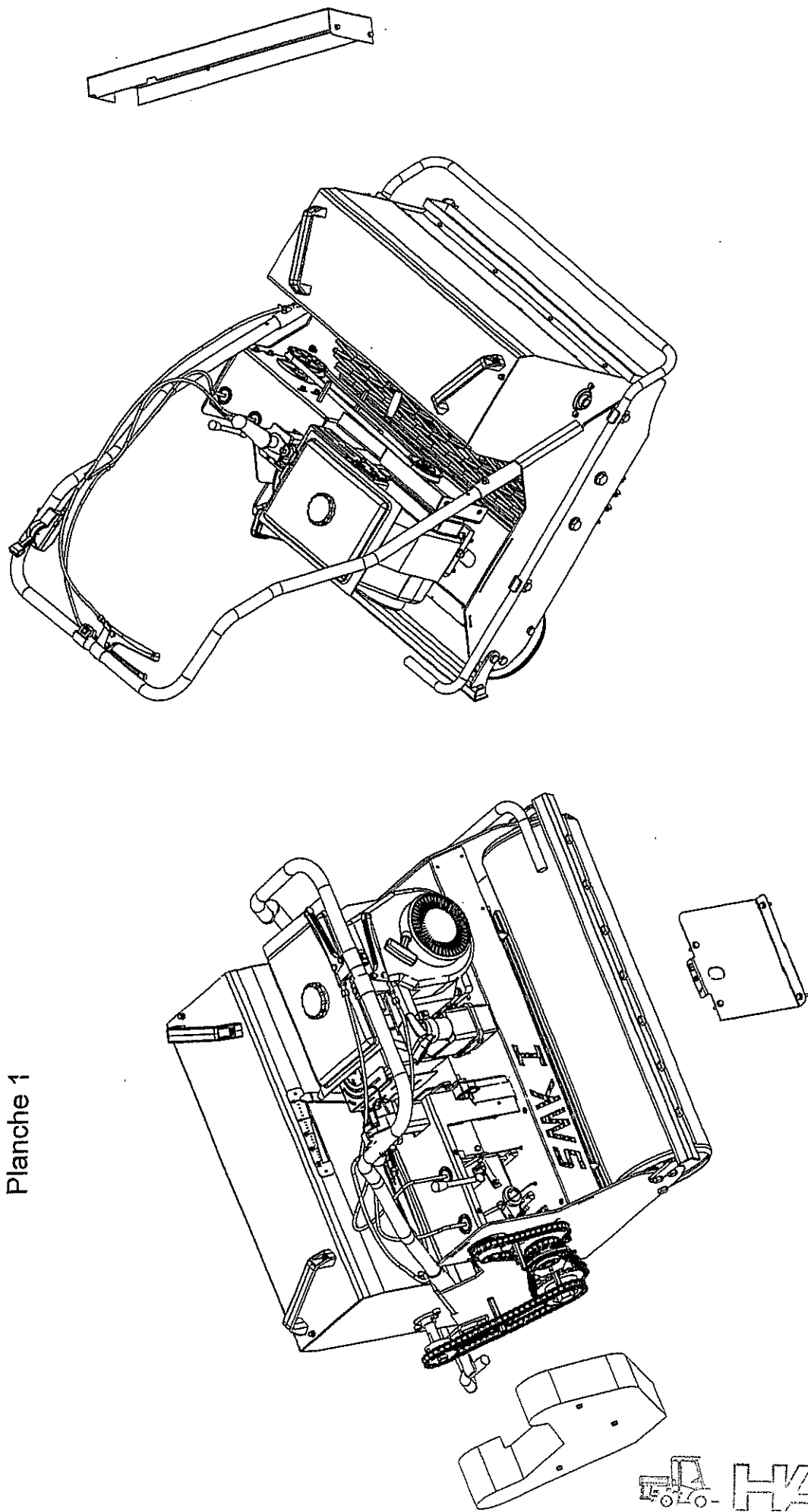


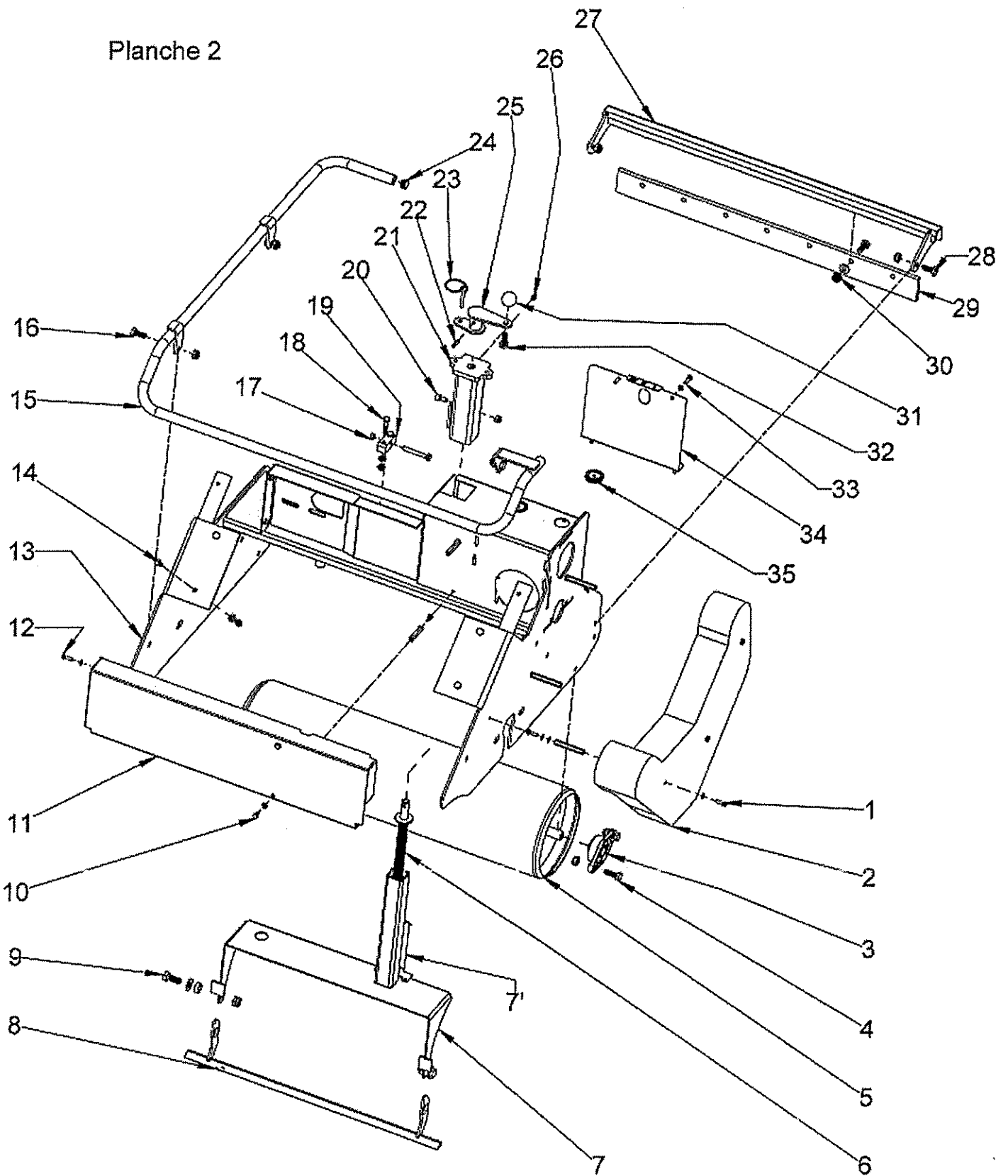
Planche 1



SMK I

 **HAFOG**
Salg . Service . Fabrikation . Import
Lyngager 5-11 2605 Brøndby
Telefon 43 98 66 11 . Fax 43 26 66 24

Planche 2



CHASSIS SMK I



PARTS LIST

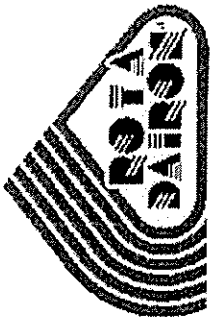
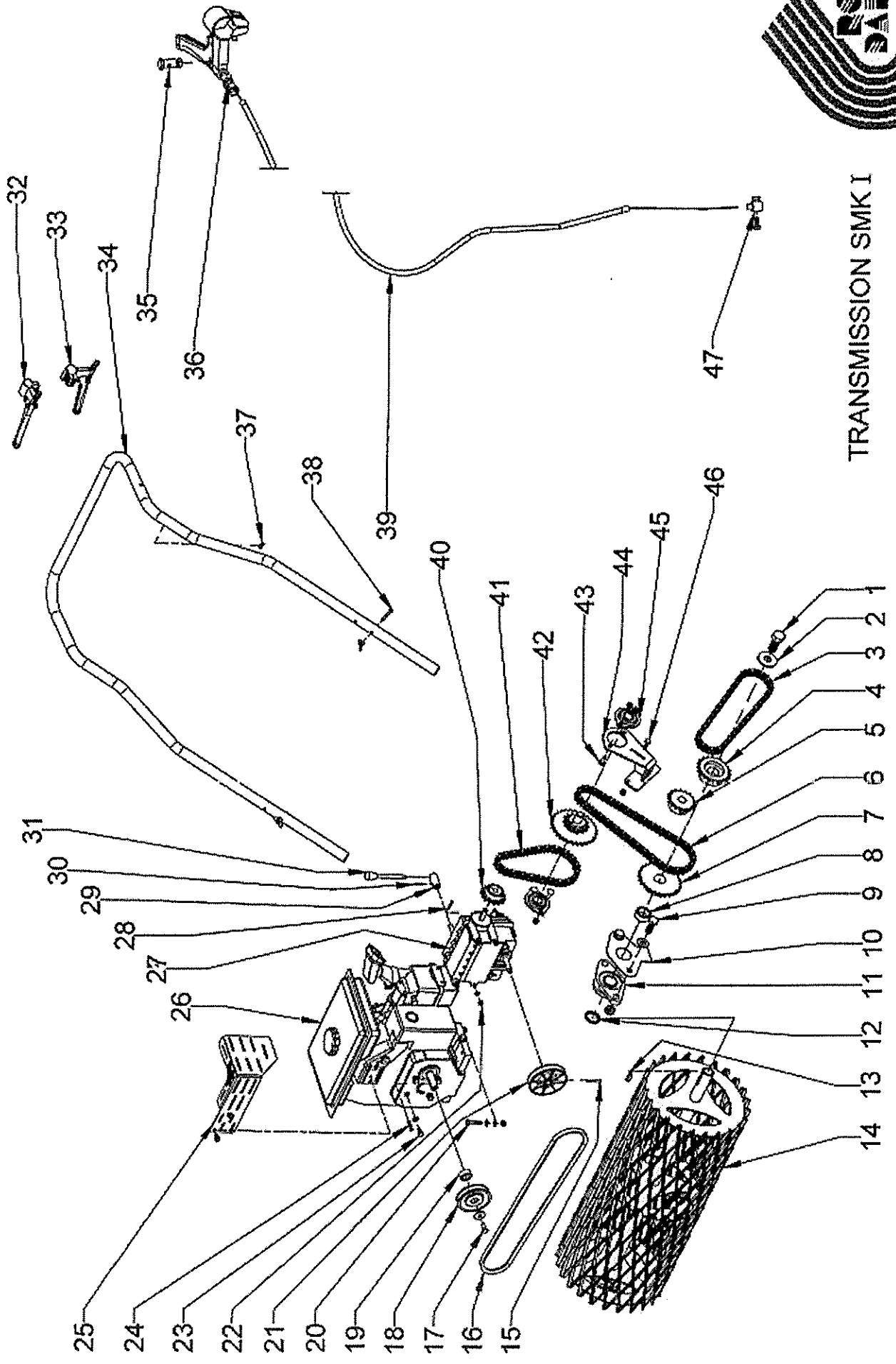
DRAWING NR 2 SMK I

>442

NR	DESIGNATION	PARTS REFERENCES	QTY
1	SCREW T.H 6 * 20 INOX	850-4003	6
	WASHER MU 6 INOX	695-4003	9
	CASING DISTANCE PIECE	620-1083	3
2	CHAIN CASE	180-1018	1
3	BEARING UCFL 204	690-1040	2
4	SCREW T.H 10 * 30 ZBJ	850-2002	4
	NUT M 10 ZBJ DIN 985	260-1011	4
5	REAR ROLLER	6076-760-1200	1
6	SCREW FOR CRANK	5100-850-1039	1
7	RETRACTABLE ROD SUPPORT	6076-770-1169	1
7'	ROD POSITION INDICATING DEVICE	640-1253	1
8	RETRACTABLE ROD	6076-640-1252	1
9	SCREW T.H 12 * 30 ZBJ	850-2016	2
	WASHER MU 12 ZBJ	695-1018	2
	DISTANCE PIECE	240-1030	2
	NUT M12 ZBJ DIN 985	260-1012	2
10	SCREW T.H 6 * 10 INOX	850-4012	4
	WASHER MU 6 INOX	695-4003	2
	CASING DISTANCE PIECE	620-1085	2
11	BELT PROTECTION CASING	180-1017	1
12	SCREW T.H 6 * 20 INOX	850-4003	2
	WASHER MU 6 INOX	695-4003	2
13	FRAME SMK 1	6076-770-1168	1
14	SCREW T.H 8 * 35 ZBJ	850-2020	4
	WASHER MU 8 ZBJ	695-1062	4
	NUT M8 ZBJ	260-1010	4
15	FRONT PROTECTION PIPE	6076-760-1177	1
16	SCREW T.H 10 * 25 ZBJ	850-2003	3
	NUT M10 ZBJ DIN 985	260-1011	3
17	SCREW T.H 8 * 60 ZB	850-2047	1
	NUT M8 INOX	260-4004	1
18	SCREW T.H 8 * 35 ZBJ	850-2020	2
	WASHER MU 8 ZBJ	695-1062	2
	NUT M8 DIN 985	260-1010	2
19	MOTOR ADJUSTABLE STOP	157-1025	1
20	SCREW CHC 8*16 INOX	850-4005	1
	NUT M8 INOX DIN 985	260-4005	1
21	FEMALE ARM SMK 1	6076-750-1178	1
22	ELASTIC PIN Ø6*26	340-1007	1
23	PIN Ø 6	340-1005	2
24	BLACK CAP DIAM 20	156-1007	2
25	CRANK ARM	6076-640-1228	1
26	GREASER M8	320-1001	1
27	REAR SCRAPER	6076-770-1170	1
28	SCREW T.H 10 * 25 ZBJ	850-2003	2
	NUT M10 ZBJ DIN 985	260-1011	2
29	SCRAPER BAND	645-1006	1
30	SCREW T.H 10 * 25 ZBJ	850-2003	7
	WASHER MU 10 ZBJ	695-1017	7
	CONTROL ASSEMBLY CASING+CABLE	260-1011	7

NR	DESIGNATION	PARTS REFERENCES	QTY
31	CRANK HANDLE	610-1009	1
32	SCREW T.H 10 * 25 ZBJ	850-2003	1
33	SCREW T.H 6 * 20 INOX	850-4003	4
	WASHER MU 6 INOX	695-4003	4
34	BOX CLOSING CASE	180-1016	1
35	CAP	156-1005	2

Planche 3



TRANSMISSION SMK I

PARTS LIST

DRAWING NR 3 SMK I

>442

NR	DESIGNATION	PARTS REFERENCES	QTY
1	SCREW TH 20 * 45 ZBJ	850-2044	1
2	WASHER Ø 20 * 50 * 4	695-1052	1
3	CHAIN 62 CHAIN LINKS	175-1021	1
4	PITCH CHAIN WHEEL 21 TEETH	600-1052	1
5	SEE DRAWING N° 4 NR 7		
6	CHAIN 64 CHAIN LINKS	175-1019	1
7	PITCH CHAIN WHEEL 28 TEETH	600-U044	1
8	DISTANCE PIECE RING LGTH 15,5	240-1085	1
9	SCREW T.H 14 * 40 ZBJ	850-2006	4
	WASHER MU 14 ZBJ	695-1025	4
	NUT M14 ZBJ DIN 985	260-1013	4
10	PROTECTION PLATE	640-1229	1
11	BEARING UCFL 206	690-1021	2
12	DISTANCE PIECE RING LGTH 5	240-1079	1
13	KEY 8 * 7 * 25	192-1005	1
14	MESH ROLLER	6076-505-1017	1
15	ELASTIC PIN Ø 6 * 40	340-1009	1
16	BELT SPA MOTOR / BOX	196-1006	1
17	SCREW T.H 8 * 20 ZBJ	MOTOR KUBOTA NETWORK	1
	WASHER W 8 ZBJ		1
	WASHER Ø 8 / Ø 28 EP 4 ZBJ		1
18	MOTOR PULLEY SPA	600-1043	1
19	MOTOR DISTANCE PIECE	240-1086	1
20	SCREW T.H 8 * 35 ZBJ	850-2020	4
	WASHER MU 8 ZBJ	695-1062	8
	NUT M 8 ZBJ DIN 985	260-1010	4
21	PULLEY SPA Ø100	735-1003-A	1
22	WASHER MU 6 INOX	695-4003	5
	NUT M6 INOX DIN 985	260-4009	5
23	SCREW T.H 8 * 16 ZBJ	850-2036	4
	WASHER MU 8 ZBJ	695-1062	4
24	KEY 5 * 5 * 30	192-1006	1
25	ANTI-HEAT PROTECTION PLATE	770-1185	1
	HOLDING SCREW	MOTOR KUBOTA NETWORK	2
26	KUBOTA HEAT MOTOR	6076.735.1001	1
27	GEAR BOX REDUCING DEVICE	6076.735.1003	1
28	KEY 4 * 4 * 25	192-1007	1
29	LEVER HUB	510-1008	1
30	ELASTIC PIN Ø 4 * 25	-	1
31	GEAR BOX CONTROL LEVER	610-1011	1
32	FRONT CONTROL HANDLE	610-1013	1
33	REAR CONTROL HANDLE	610-1012	1
34	HANDLEBARS SMK	350-1002	1
35	STOPPING OF CABLE / HANDLE	157-1029	2
36	CASING ADJUSTABLE STOP	157-1028	2
37	CASING CLIPS Ø 6,35	190-1024	2

NR	DESIGNATION	PARTS REFERENCES	QTY
38	SCREW T.H 6 * 45 ZBJ	850-2037	2
	WING NUT M6	260-1017	2
39	CONTROL ASSEMBLY CASING+CABLE	6076.295.1001	2
40	PINION 15 TEETH WITH HUB	600-1045	1
	RETRACTABLE HUB	510-1007	1
41	CHAIN 44 CHAIN LINKS	175-1018	1
42	REDUCING SHAFT 15 / 30	6076-100-1094	1
43	SCREW TRCC 8 * 20 ZB	850-2039	4
	NUT M8 ZBJ DIN 985	260-1010	4
44	SHAFT FIXING SCREED	6076-640-1220	1
45	BEARING	690-1022	2
46	SCREW T.H 8 * 25 ZBJ	850-2024	2
	NUT M8 ZBJ DIN 985	260-1010	2
47	STOPPING OF CABLE / FRAME	157-1026	2
	SCREW T.H 5 * 10 DIN 933 INOX	850-4013	4

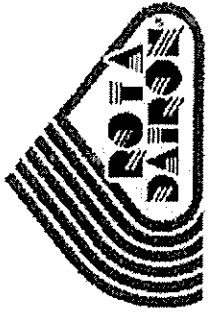
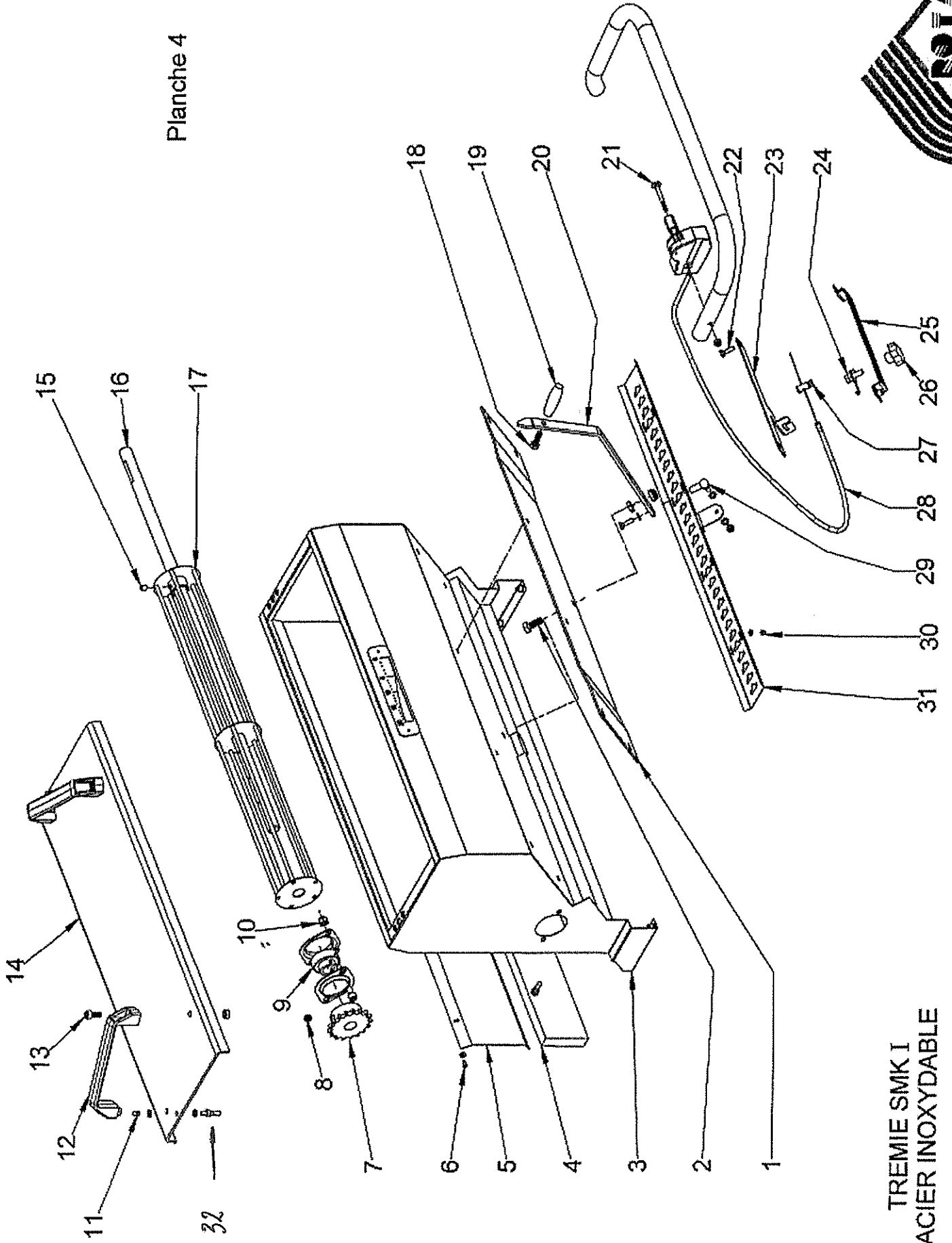


Planche 4



TREMIE SMK I
ACIER INOXYDABLE

PARTS LIST		DRAWING NR 4 SMK I	>442
NR	DESIGNATION	PARTS REFERENCES	QTY
1	SEED BOX SUPPORT PLATE	715-1001-A	1
2	SCREW T.H 10 * 25 ZBJ	850-2003	1
	NUT Hm 10	260-4001	1
	NUT M10 ZBJ DIN 985	260-1011	1
3	STAINLESS STEEL HOPPER	715-1001	1
4	TROUGH	715-1001-B	1
5	FRONT PLATE	715-1001-C	1
6	SCREW T.H 4 * 12 INOX	850-4004	8
	WASHER MU 4 INOX	695-4001	8
7	PINION 17 TEETH	600-1051	1
8	SCREW HC 10*10 INOX	850-4002	1
9	BEARING SLFL Ø 20	690-1022	2
10	SCREW CHC 8*16 INOX	850-4005	4
	NUT M8 INOX DIN 985	260-4005	4
11	DOME CAP NUT M5	260-4010	2
	WASHER MU 5 INOX	695-4004	4
	CENTERING PIN	715-1001-D	2
12	HANDLE M 443 BLACK (AKU 610-1022)	610-1003	2
13	SCREW CHC 8 * 20 STAINLESS STEEL	850-4006	4
	NUT M8 STAINLESS STEEL	260-4004	4
14	TANK COVER	197-1004	1
15	SCREW HC 8 * 10 INOX	850-4001	2
16	MIXER AXIS	120-1015	1
17	MIXER	715-1001-E	1
18	SCREW T.H 8 * 25 ZBJ	850-2024	1
19	HANDLE FOR MANUAL CONTROL OF FLOW	610-1005	1
20	LEVER FOR CONTROL OF FLOW	715-1001-F	1
21	SCREW TRCC 6 * 55 ZB	850-2050	1
	NUT INOX M6 DIN 985	260-4009	1
22	SCREW T.H 6 * 20 INOX	850-4003	2
23	CASING SUPPORT FOR REMOTE CONTROL	640-1246	1
24	FLOW THRUST SCREW	715-1013-D	1
25	ADJUSTING RAMP	715-1013-C	1
26	ADJUSTING HANDLE	610-1006	1
27	CABLE STOPPING DEVICE	157-1029	1
28	HANDLE FOR REMOTE CONTROL	6076-295-1003	1
29	BALL JOINT 90° M6 A RIGHT	692-1003	1
	SCREW T.H 6 * 20 INOX	850-4003	1
	WASHER MU 6 INOX	695-4003	3
	NUT M6 DIN 985	260-4009	1
30	NUT M4 DIN 985	260-4003	8
	WASHER MU 4 INOX	695-4001	8
31	STRIP	715-1001-G	1

32 LASATAP

715-1001 D

2