

1.CYLINDER BLOCK

0CV10-G60700 1.CYLINDER BLOCK

(A)=3TNE88-CR

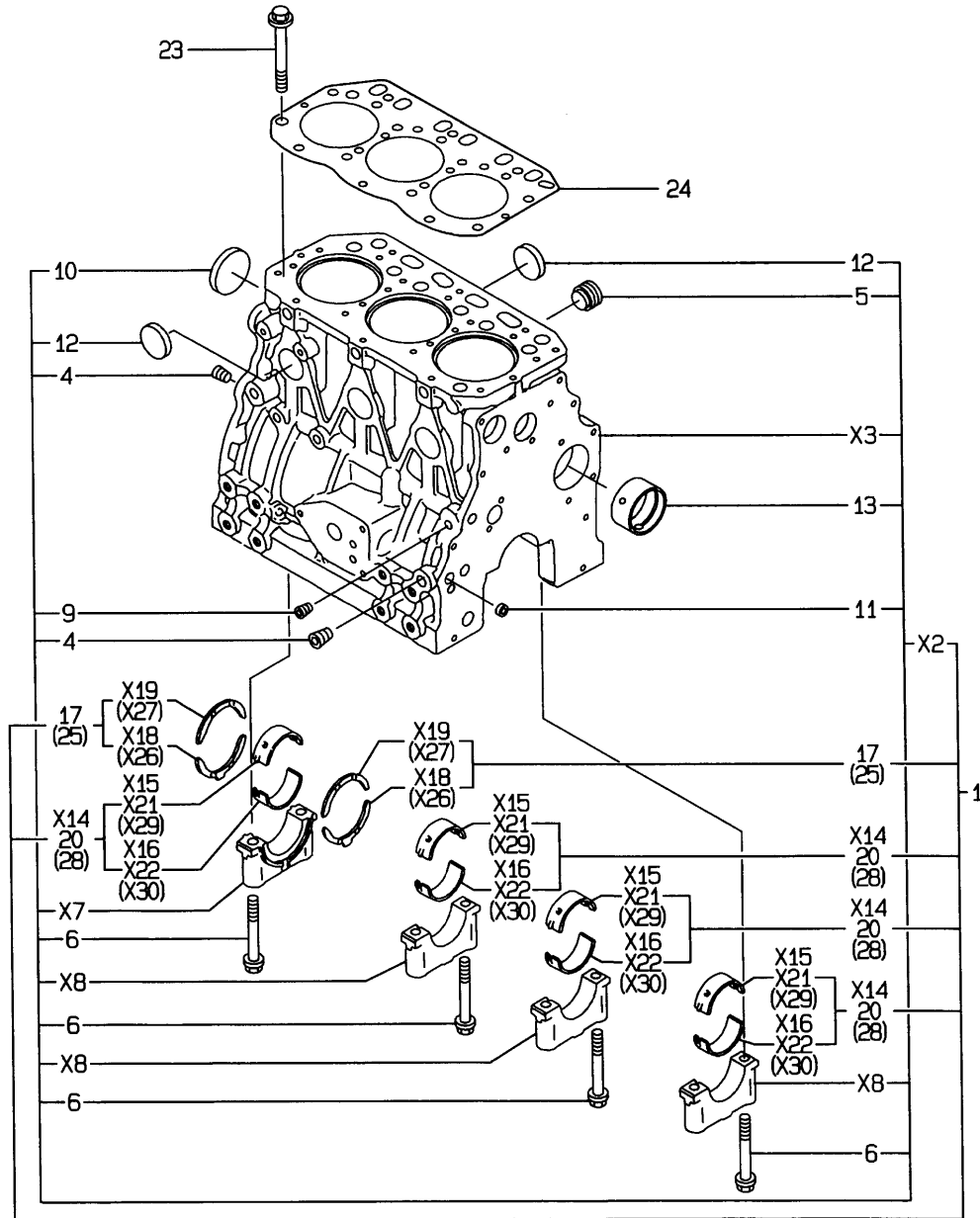
(B)=

(C)=

(D)=

(E)=

(F)=



REF.	LEV.	PARTS NO.	DESCRIPTION	Q'TY						I	R
				(A)	(B)	(C)	(D)	(E)	(F)		
1	1	729001-01560	BLOCK ASSY, CYLINDER	1							
4	3	124160-01910	PLUG PT1/4	3							
5	3	171051-01921	PLUG	1							
6	3	129150-02020	BOLT, METAL CAP	8							
9	3	23871-010000	PLUG PT1/8,SCREW	1							
10	3	27231-500000	PLUG 50	1							
11	3	27241-120000	PLUG 12	2							
12	3	27241-300000	PLUG 30	6							
13	3	129795-02411	BUSH, CAMSHAFT	1							
17	2	129150-02930	METAL, THRUST	2							
20	2	129001-02930	MAIN BEARING SET	4							3
23	1	129150-01200	STUD, CYL. HEAD	14							
24	1	129001-01340	GASKET, (NON-ASB.)	1							
25	1	129150-02940	METAL,THRUST.25(4PIE	2							1
28	1	129150-02870	MAIN METAL US=0.25	4							2

Remarks

- (1) OVER-SIZE(O.S=0.25)PART.
- (2) UNDER-SIZE(U.S=0.25)PART.
- (3) REPAIR PART.

2.GEAR HOUSING

OCV10-G60700 2.GEAR HOUSING

(A)=3TNE88-CR

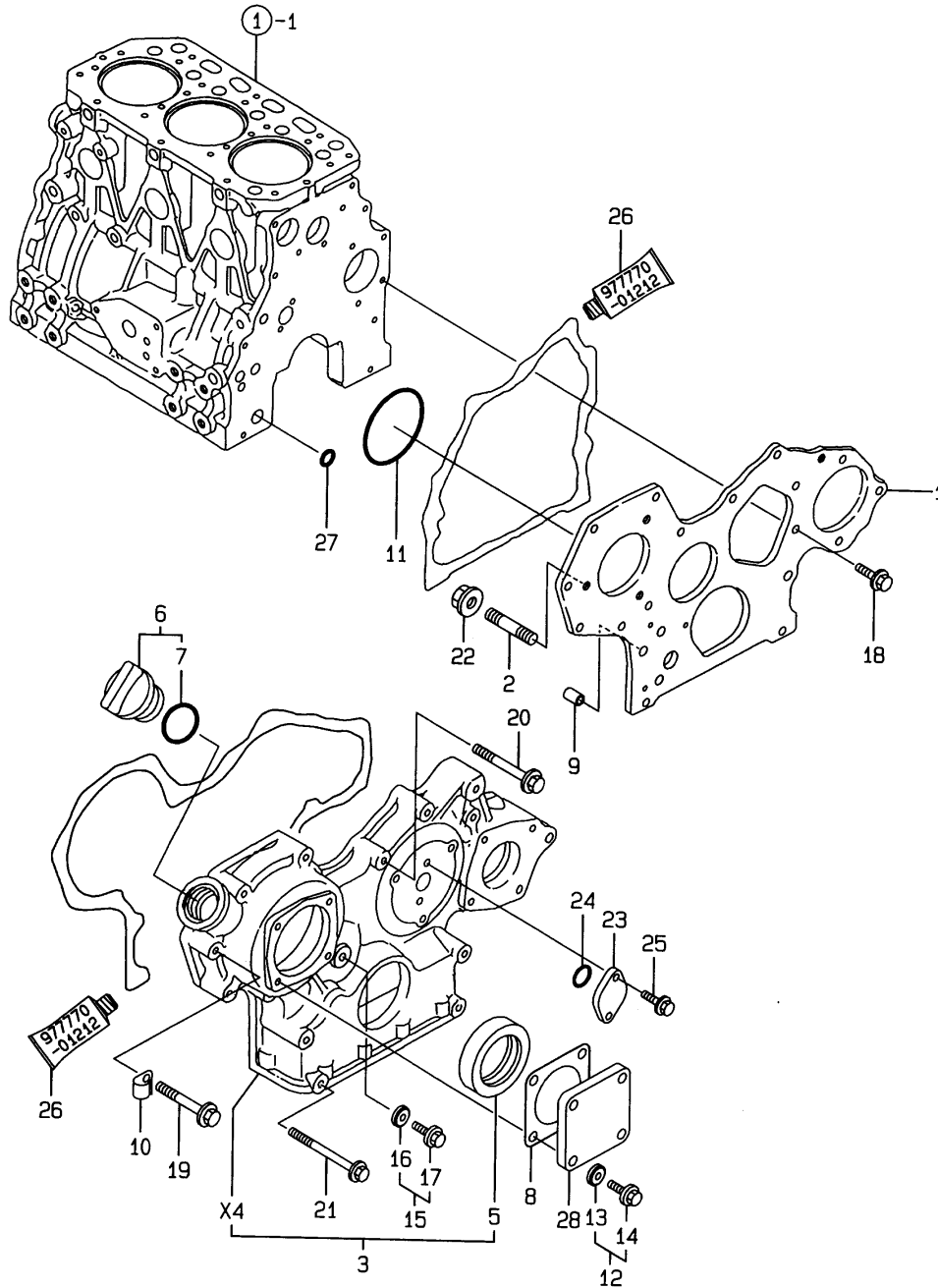
(B)=

(C)=

(D)=

(E)=

(F)=



REF.	LEV.	PARTS NO.	DESCRIPTION	Q'TY						I	R
				(A)	(B)	(C)	(D)	(E)	(F)		
1	1	171353-01520	FLANGE, GEAR HOUSING	1							
2	1	121450-01560	STUD M 8X 22	3							
3	1	171353-01580	GEAR CASE ASSY	1							
5	2	129795-01800	SEAL, OIL	1							
6	1	124160-01751	COVER,FILLER	1							
7	2	24311-000320	O-RING 1A P-32.0	1							
8	1	124240-01883	GASKET, (NON-ASB.)	1							
9	1	129795-01950	PIPE, KNOCK L=18	2							
10	1	129150-03100	RETAINER	1							
11	1	121850-51960	O-RING, F.I.PUMP	1							
12	1	124550-01590	BOLT M8X16	4							
13	2	22190-080002	SEAL WASHER 8S	4							
14	2	26106-080162	BOLT M 8X 16 PLATED	4							
15	1	124550-01590	BOLT M8X16	1							
16	2	22190-080002	SEAL WASHER 8S	1							
17	2	26106-080162	BOLT M 8X 16 PLATED	1							
18	1	26106-080162	BOLT M 8X 16 PLATED	3							
19	1	26106-080452	BOLT M 8X 45 PLATED	6							
20	1	26106-080552	BOLT M 8X 55 PLATED	3							
21	1	129001-91840	BOLT M 8X 85 PLATED	4							
22	1	26366-080002	NUT M 8	3							
23	1	121023-01550	COVER, BLIND	1							
24	1	24341-000240	O-RING 1A S-24.0	1							
25	1	26106-060162	BOLT M 6X 16 PLATED	2							
26	1	977770-01212	GASKET, LIQUID	1							1
27	1	24311-000160	O-RING 1A P-16.0	2							
28	1	124240-01871	COVER, HO-P	1							

Remarks
(1) OPTIONAL PART.

3.MOUNTING FLANGE & OIL SUMP

OCV10-G60700 3.MOUNTING FLANGE & OIL SUMP

(A)=3TNE88-CR

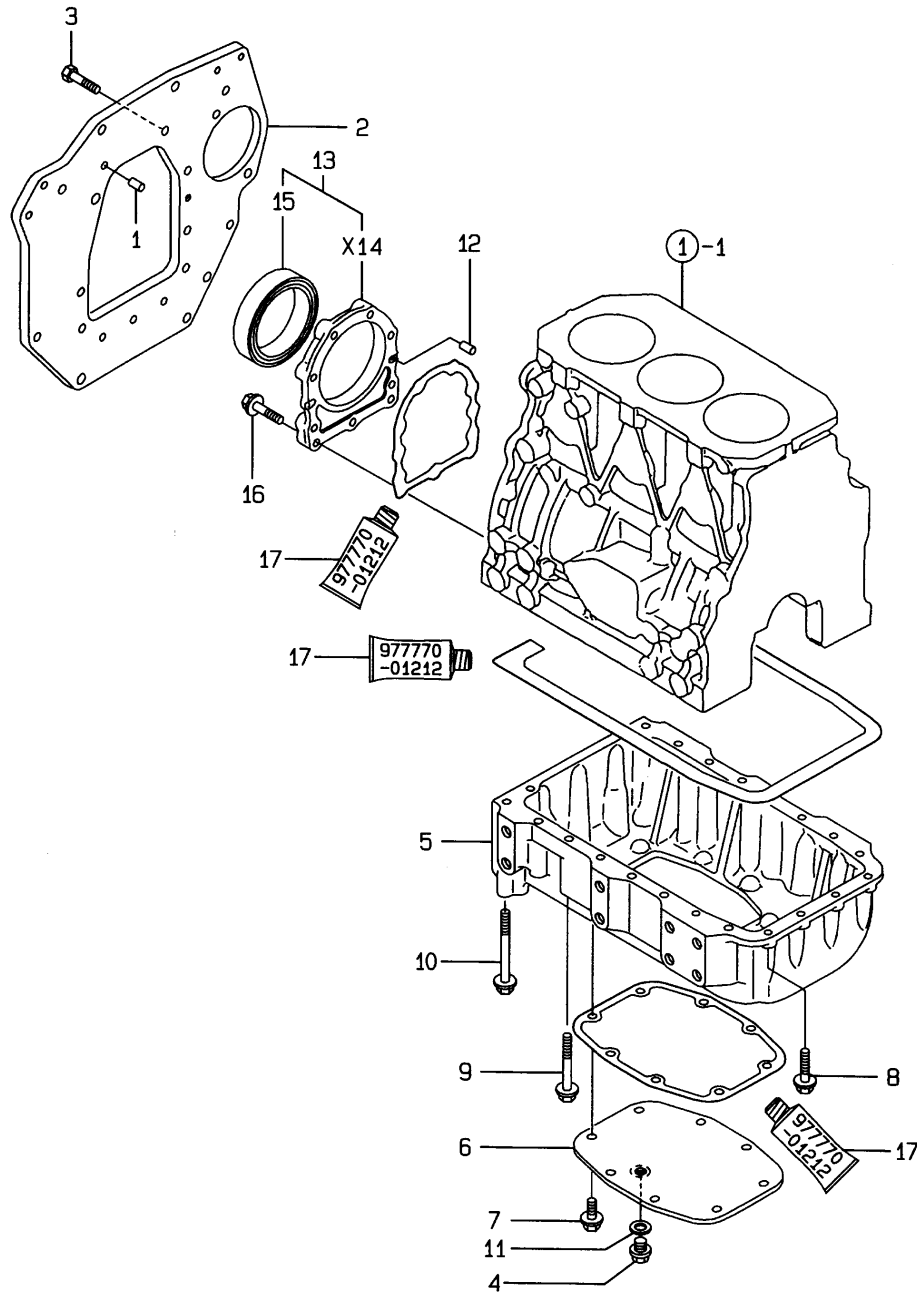
(B)=

(C)=

(D)=

(E)=

(F)=



REF.	LEV.	PARTS NO.	DESCRIPTION	Q'TY						I	R
				(A)	(B)	(C)	(D)	(E)	(F)		
1	1	129100-01580	PARALLEL PIN 8X16	2							
2	1	129129-01600	FLANGE, MOUNTING	1							
3	1	26206-100202	BOLT M10X20	8							
4	1	105425-01690	PLUG M16	1							
5	1	129126-01700	OIL PAN	1							
6	1	129150-01721	COVER, OIL SUMP	1							
7	1	26106-080122	BOLT M 8X 12 PLATED	8							
8	1	26106-080252	BOLT M 8X 25 PLATED	4							
9	1	129001-91840	BOLT M 8X 85 PLATED	14							
10	1	129001-91910	BOLT M 8X120	4							
11	1	22190-160002	SEAL WASHER 16S	1							
12	1	129100-01580	PARALLEL PIN 8X16	2							
13	1	129100-01640	CASE ASSY, OIL SEAL	1							
15	2	129795-01780	SEAL, OIL	1							
16	1	129486-01670	BOLT M8X30,COLLAR HD	9							
17	1	977770-01212	GASKET, LIQUID	1							1

Remarks

(1) OPTIONAL PART.

N:Old $\xrightarrow{\text{Yes}}$ New, Q:Old $\xrightarrow{\text{No}}$ New, R:Old $\xrightarrow{\text{Yes}}$ New, S:Old $\xrightarrow{\text{No}}$ New, W:Add, Z:Discontinued, F:Interchangeable by set, K:Q'ty Change
(C)Copy Rights YANMAR CO.,LTD.

4.CYLINDER HEAD & BONNET

OCV10-G60700 4.CYLINDER HEAD & BONNET

(A)=3TNE88-CR

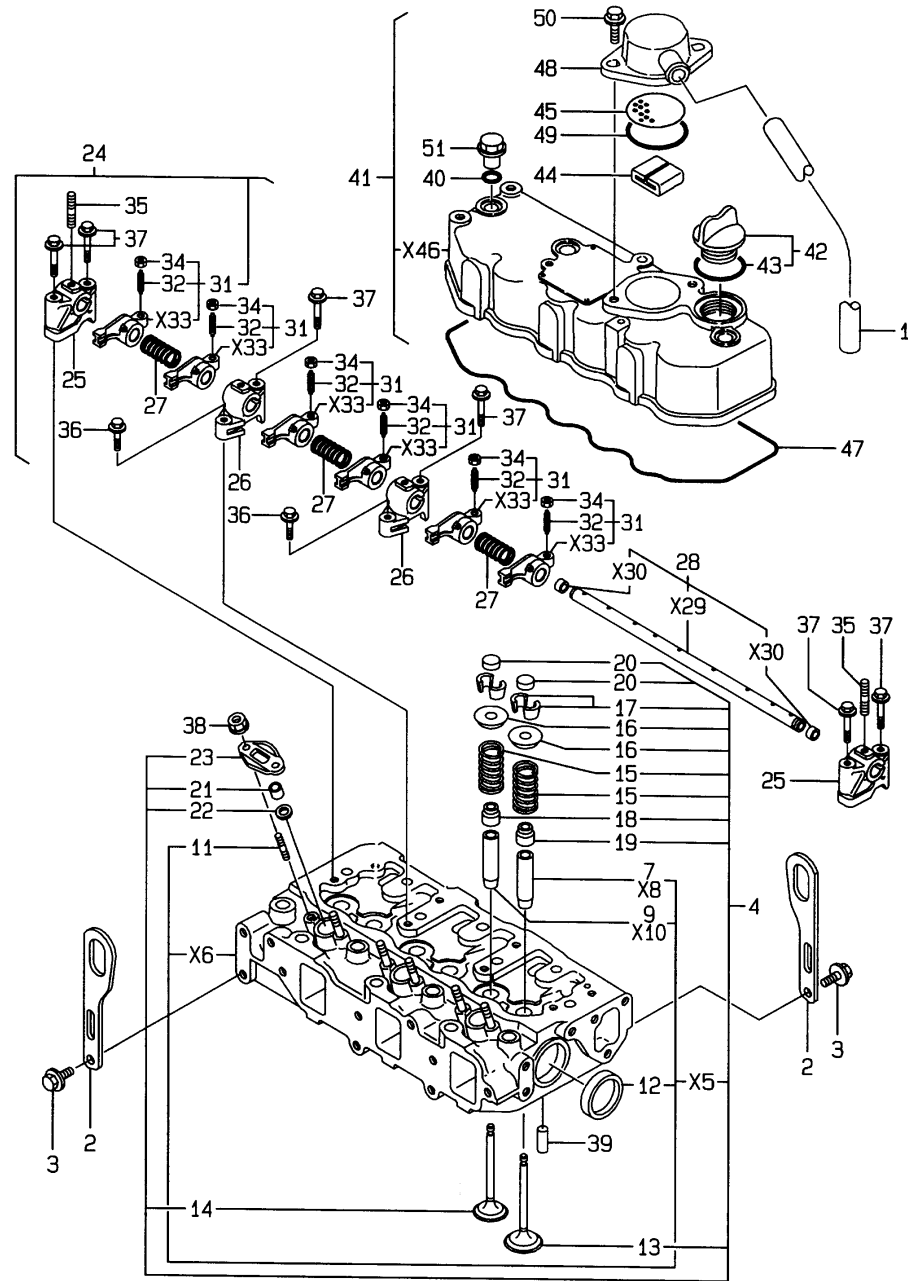
(B)=

(C)=

(D)=

(E)=

(F)=



x-MARK PARTS: NOT SOLD SEPARATELY.

REF.	LEV.	PARTS NO.	DESCRIPTION	QTY						I	R
				(A)	(B)	(C)	(D)	(E)	(F)		
1	1	129150-03090	PIPE	1							
2	1	124736-07900	LIFTER, ENGINE	2							
3	1	26106-080142	BOLT 8X 14 PLATED	4							
4	1	129051-11700	HEAD ASSY, CYLINDER	1							
7	3	120130-11860	GUIDE, VALVE	3						1	
9	3	129150-11810	GUIDE, VALVE	3						1	
11	3	26216-060202	STUD M 6X 20 PLATED	6							
12	3	27241-400000	PLUG 40	2							
13	2	129100-11100	VALVE, INTAKE	3							
14	2	129100-11110	VALVE, EXHAUST	3							
15	2	129795-11120	SPRING, VALVE	6							
16	2	129795-11180	RETAINER, SPRING	6							
17	2	27310-080000	COTTER 8	6							
18	2	121400-11340	SEAL, VALVE STEM	3							
19	2	124460-11340	SEAL, VALVE STEM	3							
20	2	129150-11370	CAP, VALVE	6							
21	2	119625-11870	PROTECTOR, NOZZLE	3							
22	2	119625-11880	SEAT, NOZZLE	3							
23	2	119625-11900	RETAINER	3							
24	1	129155-11241	SHAFT ASSY, ROCKER	1							
25	2	129155-11260	SUPPORT, ROCKER ARM	2							
26	2	129155-11270	SUPPORT, ROCKER ARM	2							
27	2	129150-11280	SPRING	3							
28	2	129150-11290	SHAFT, ROCKER ARM	1							
31	2	729402-11650	ARM ASSY, ROCKER	6							
32	3	129150-11230	SCREW, VALVE	6							
34	3	129150-11750	NUT M8XP1.0	6							
35	2	26226-080182	STUD M 8X 18 PLATED	3							
36	1	26106-080252	BOLT M 8X 25 PLATED	2							
37	1	26106-080502	BOLT M 8X 50 PLATED	6							
38	1	26366-060002	NUT M 6	6							
39	1	22351-060012	SPRING PIN 6X12	2							
40	1	24311-000120	O-RING 1A P 12.0	3							
41	1	129100-11350	BONNET ASSY	1							
42	2	124160-01751	COVER, FILLER	1							
43	3	24311-000320	O-RING 1A P-32.0	1							
44	2	129150-03070	BAFFLE, BREATHER	1							
45	2	129150-03080	PLATE, SHELTER	1							
47	2	129150-11310	GASKET, BONNET	1							
48	2	129150-03020	COVER, BREATHER	1							
49	2	24341-000500	O-RING 1A S-50.0	1							
50	2	26106-080162	BOLT M 8X 16 PLATED	2							
51	1	124160-11360	KNOB	3							

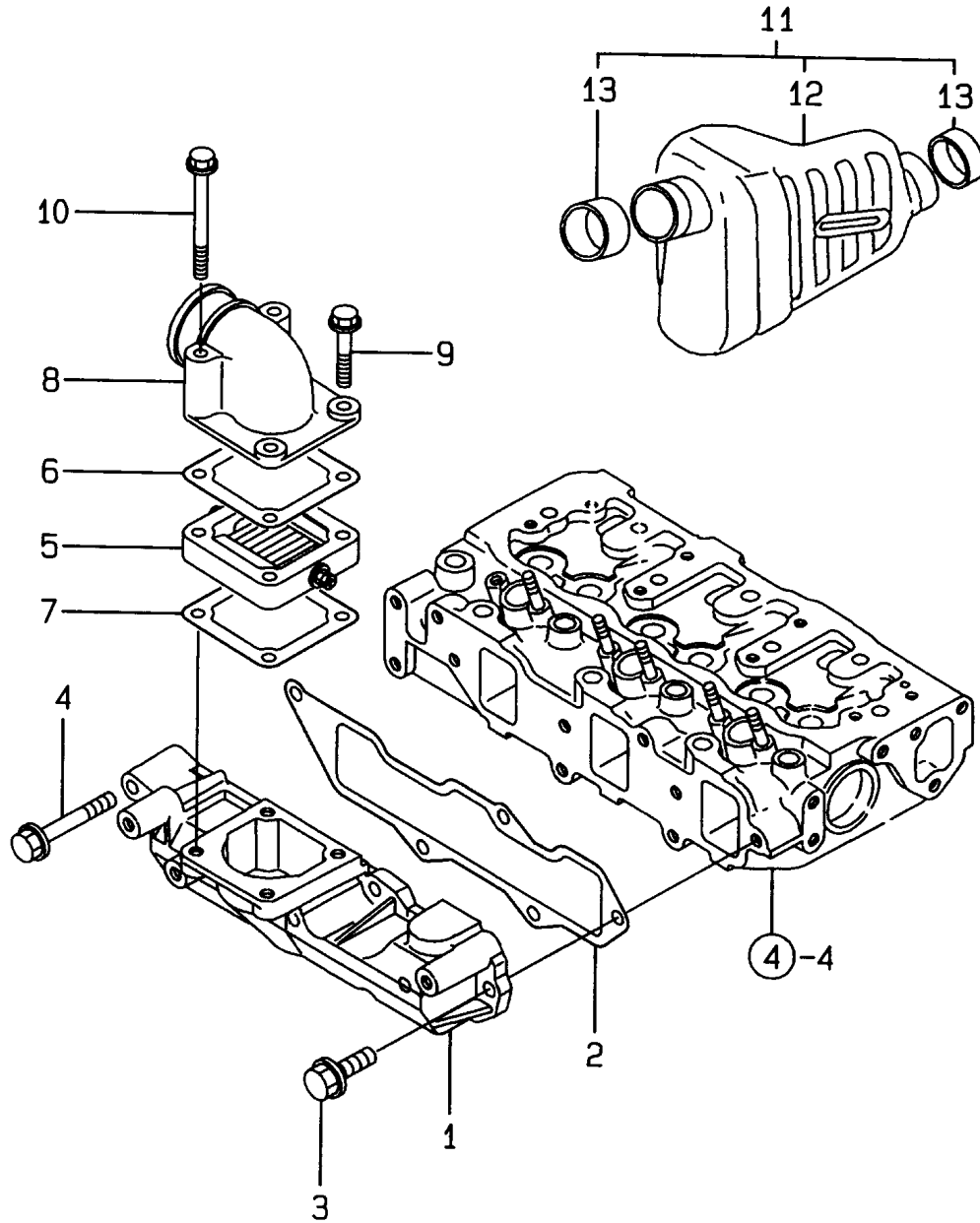
Remarks
(1) REPAIR PART.

5. SUCTION MANIFOLD

0CV10-G60700 5.SUCTION MANIFOLD

(A)=3TNE88-CR
(B)=
(C)=

(D)=
(E)=
(F)=



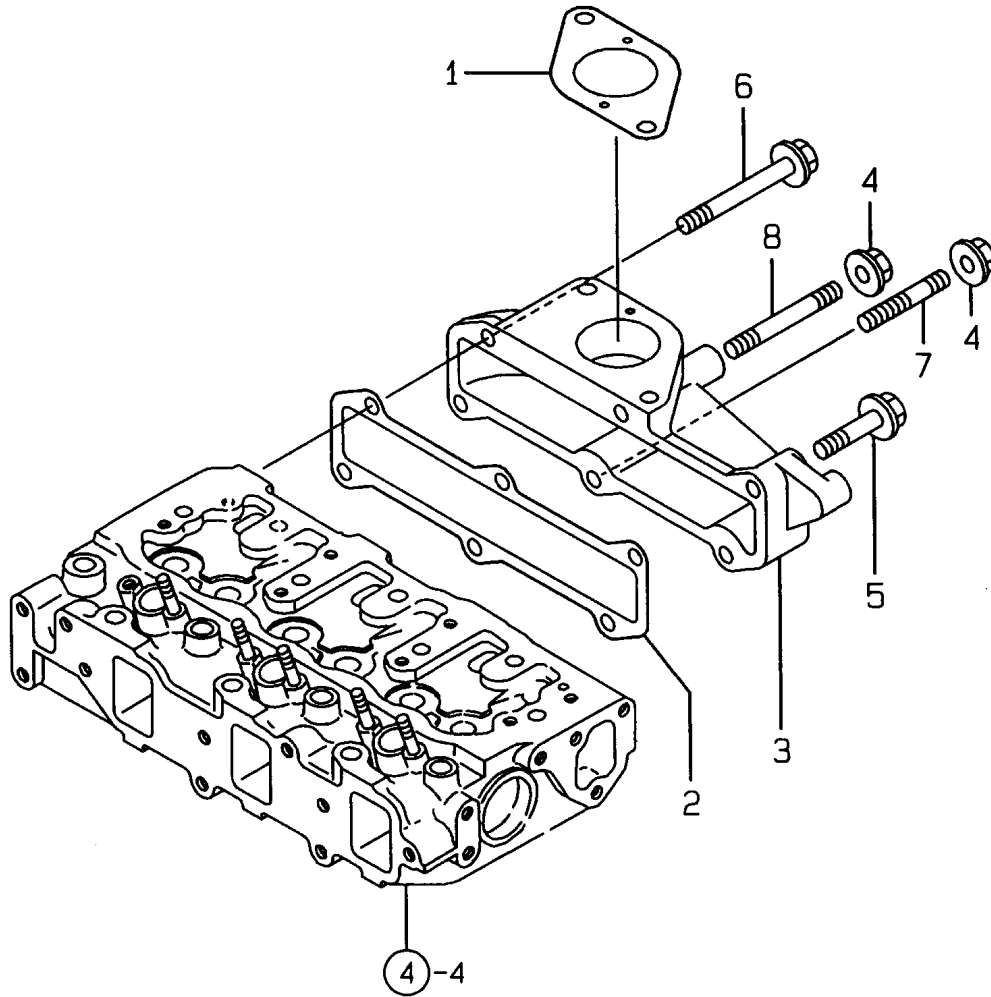
REF.	LEV.	PARTS NO.	DESCRIPTION	Q'TY						I	R
				(A)	(B)	(C)	(D)	(E)	(F)		
1	1	129001-12120	MANIFOLD, SUCTION	1							
2	1	129001-12110	GASKET,INT. MANIFOLD	1							
3	1	26106-080202	BOLT M 8X 20 PLATED	4							
4	1	26106-080502	BOLT M 8X 50 PLATED	1							
5	1	129100-77500	HEATER, AIR	1							
6	1	129100-77510	GASKET, AIR HEATER	1							
7	1	129150-77511	GASKET, (NON-ASB.)	1							
8	1	171340-77520	BEND	1							
9	1	26106-080402	BOLT M 8X 40 PLATED	2							
10	1	26106-080802	BOLT M 8X 80 PLATED	2							
11	1	129051-12060	SILENCER, INTAKE	1							
12	2	119808-12041	PIPE (A), AIR INTAKE	1							
13	2	119808-12071	PIPE	2							

6. EXHAUST MANIFOLD

0CV10-G60700 6. EXHAUST MANIFOLD

(A)=3TNE88-CR
(B)=
(C)=

(D)=
(E)=
(F)=



REF.	LEV.	PARTS NO.	DESCRIPTION	Q'TY						I	R
				(A)	(B)	(C)	(D)	(E)	(F)		
1	1	129107-13540	PACKING,SILENCER GSK	1							
2	1	129001-13110	GASKET, EXH.MANIFOLD	1							
3	1	129052-13150	MANIFOLD, EXHAUST	1							
4	1	26366-080002	NUT M 8	2							
5	1	26106-080402	BOLT M 8X 40 PLATED	3							
6	1	26106-080752	BOLT M 8X 75 PLATED	1							
7	1	26216-080402	STUD M 8X 40 PLATED	1							
8	1	26216-080802	STUD M 8X 80 PLATED	1							

7.CAMSHAFT & DRIVING GEAR

OCV10-G60700 7.CAMSHAFT & DRIVING GEAR

(A)=3TNE88-CR

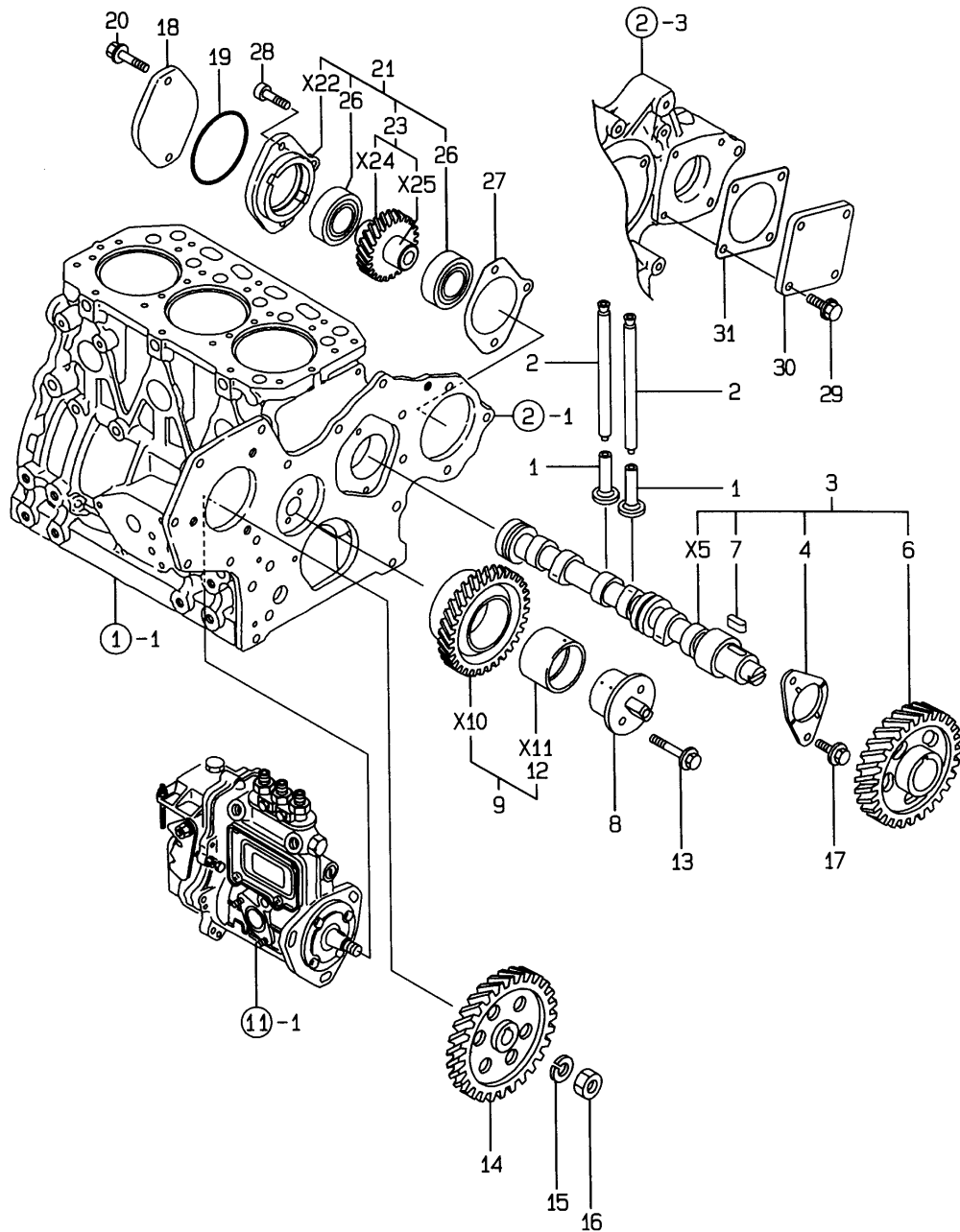
(B)=

(C)=

(D)=

(E)=

(F)=



REF.	LEV.	PARTS NO.	DESCRIPTION	Q'TY						I	R
				(A)	(B)	(C)	(D)	(E)	(F)		
1	1	129150-14200	TAPPET	6							
2	1	129150-14400	ROD, PUSH	6							
3	1	129129-14580	CAMSHAFT ASSY	1							
4	2	129150-02450	METAL, THRUST(CAM	1							
6	2	129150-14101	GEAR, CAMSHAFT	1							
7	2	22512-070140	KEY 7X 14	1							
8	1	129100-25061	SHAFT, IDLE GEAR	1							
9	1	129150-25101	GEAR W/BUSH	1							
12	2	129150-25920	BUSH, IDLE GEAR	1							1
13	1	26106-080452	BOLT M 8X 45 PLATED	2							
14	1	129150-25900	GEAR, FUEL INJ. PUMP	1							
15	1	22217-120000	SPRING WASHER 12	1							
16	1	26716-120002	NUT 12	1							
17	1	26106-080142	BOLT 8X 14 PLATED	2							
18	1	121023-26070	COVER, HO-P	1							
19	1	24321-000850	O-RING 1A G-85.0	1							
20	1	26106-100452	BOLT M10X 45 PLATED	2							
21	1	129484-26200	GEAR ASSY, H.O. PUMP	1							
23	2	129484-26210	GEAR W/SHAFT	1							
26	2	24105-060064	BALL BEARING	2							
27	1	171353-26081	GASKET, HO-P BRACKET	1							
28	1	26450-080282	BOLT M 8X 28	1							
29	1	26106-080162	BOLT M 8X 16 PLATED	4							
30	1	124240-01871	COVER, HO-P	1							
31	1	124240-01883	GASKET, (NON-ASB.)	1							

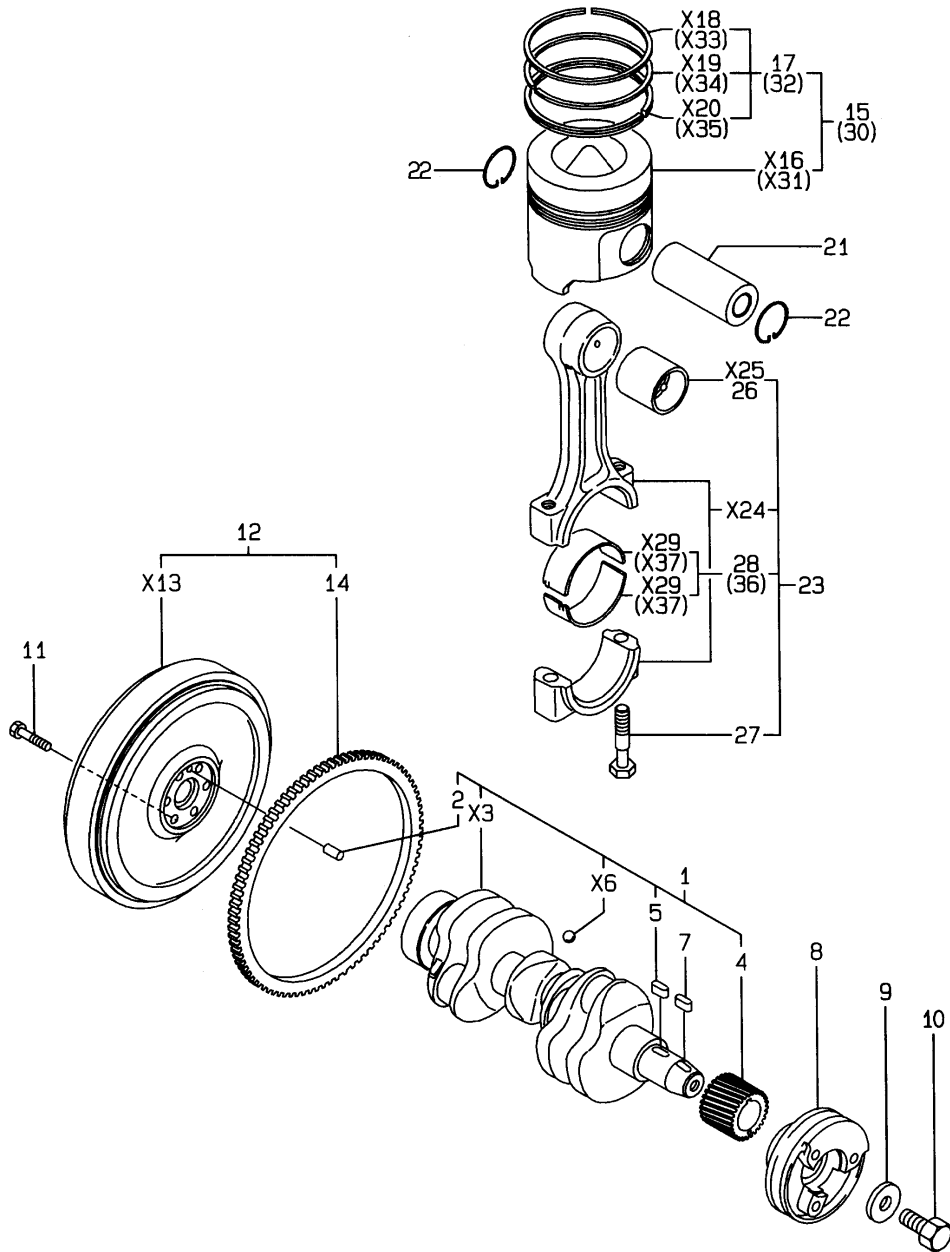
Remarks
(1) REPAIR PART.

8.CRANKSHAFT & PISTON

0CV10-G60700 8.CRANKSHAFT & PISTON

(A)=3TNE88-CR
(B)=
(C)=

(D)=
(E)=
(F)=



REF.	LEV.	PARTS NO.	DESCRIPTION	Q'TY						I	R
				(A)	(B)	(C)	(D)	(E)	(F)		
1	1	129001-21000	CRANKSHAFT ASSY	1							
2	2	129100-01580	PARALLEL PIN 8X16	1							
4	2	129150-21200	GEAR, CRANKSHAFT	1							
5	2	22512-070140	KEY 7X 14	1							
7	1	22512-070140	KEY 7X 14	1							
8	1	129051-21660	V-PULLEY	1							
9	1	129795-21661	WASHER	1							
10	1	121850-21680	BOLT, V-PULLEY	1							
11	1	124160-21501	BOLT, FLYWHEEL	6							
12	1	129051-21570	FLYWHEEL ASSY	1							
14	2	119865-21600	GEAR, RING	1							
15	1	129001-22081	PISTON W/RINGS	3							
17	2	129001-22500	RING SET, PISTON	3							
21	1	129202-22300	PIN, PISTON(D26,L70)	3							
22	1	22252-000260	CIRCLIP 26	6							
23	1	729402-23100	ROD ASSY, CONNECTING	3							
26	2	129100-23910	BUSH, PISTON PIN	3							1
27	2	121550-23200	BOLT, CONNECTING ROD	6							
28	2	129150-23600	METAL, CRANKPIN	3							
30	1	129001-22901	PISTON W/RING OS=.25	3							2
32	2	129001-22950	RING SET O.S=.25	3							2
36	1	129150-23610	METAL.PIN US=.25	3							3

Remarks

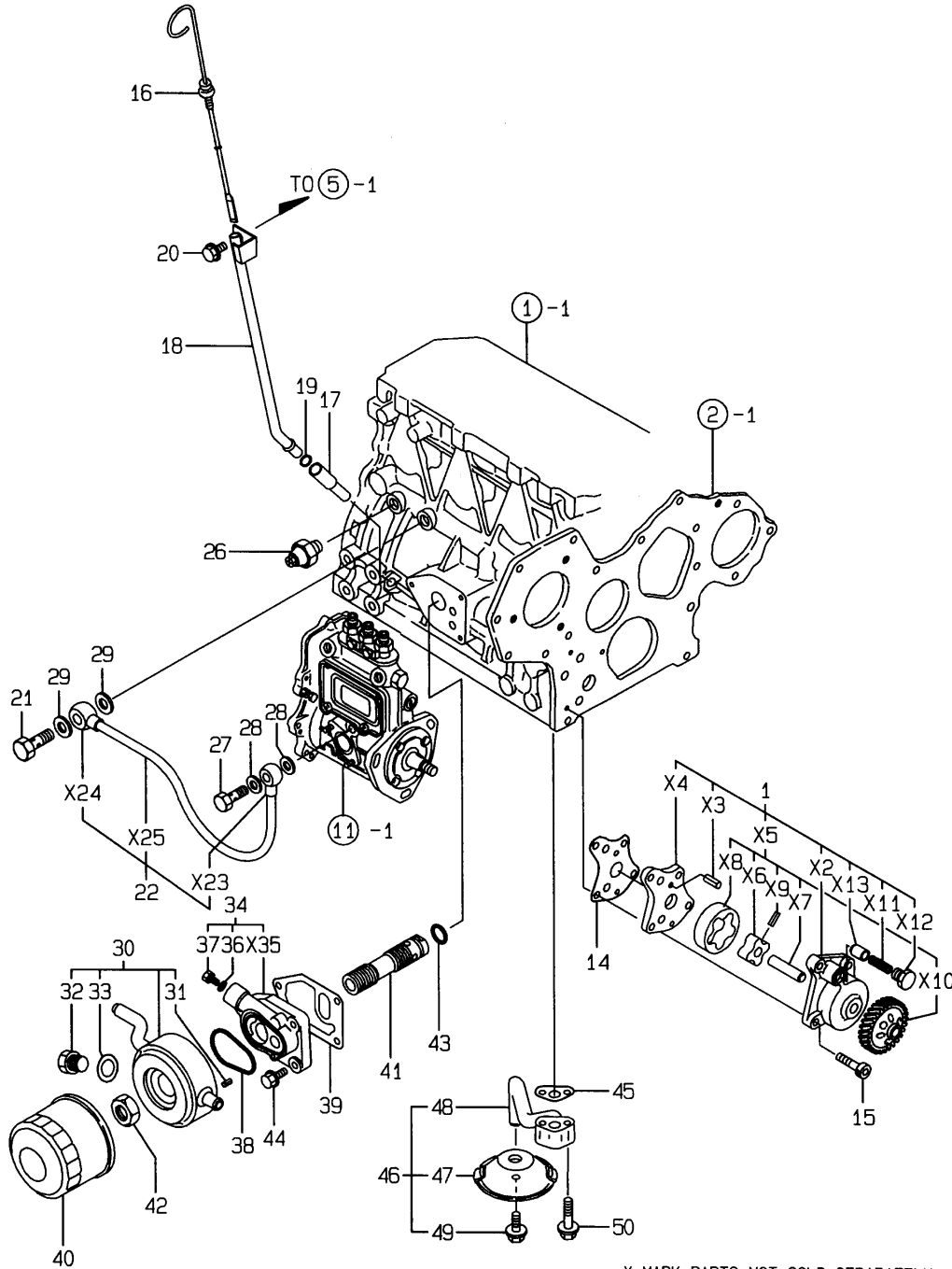
- (1) REPAIR PART.
- (2) OVER-SIZE(O.S=0.25)PART.
- (3) UNDER-SIZE(U.S=0.25)PART.

9.LUB.OIL SYSTEM

0CV10-G60700 9.LUB.OIL SYSTEM

(A)=3TNE88-CR
(B)=
(C)=

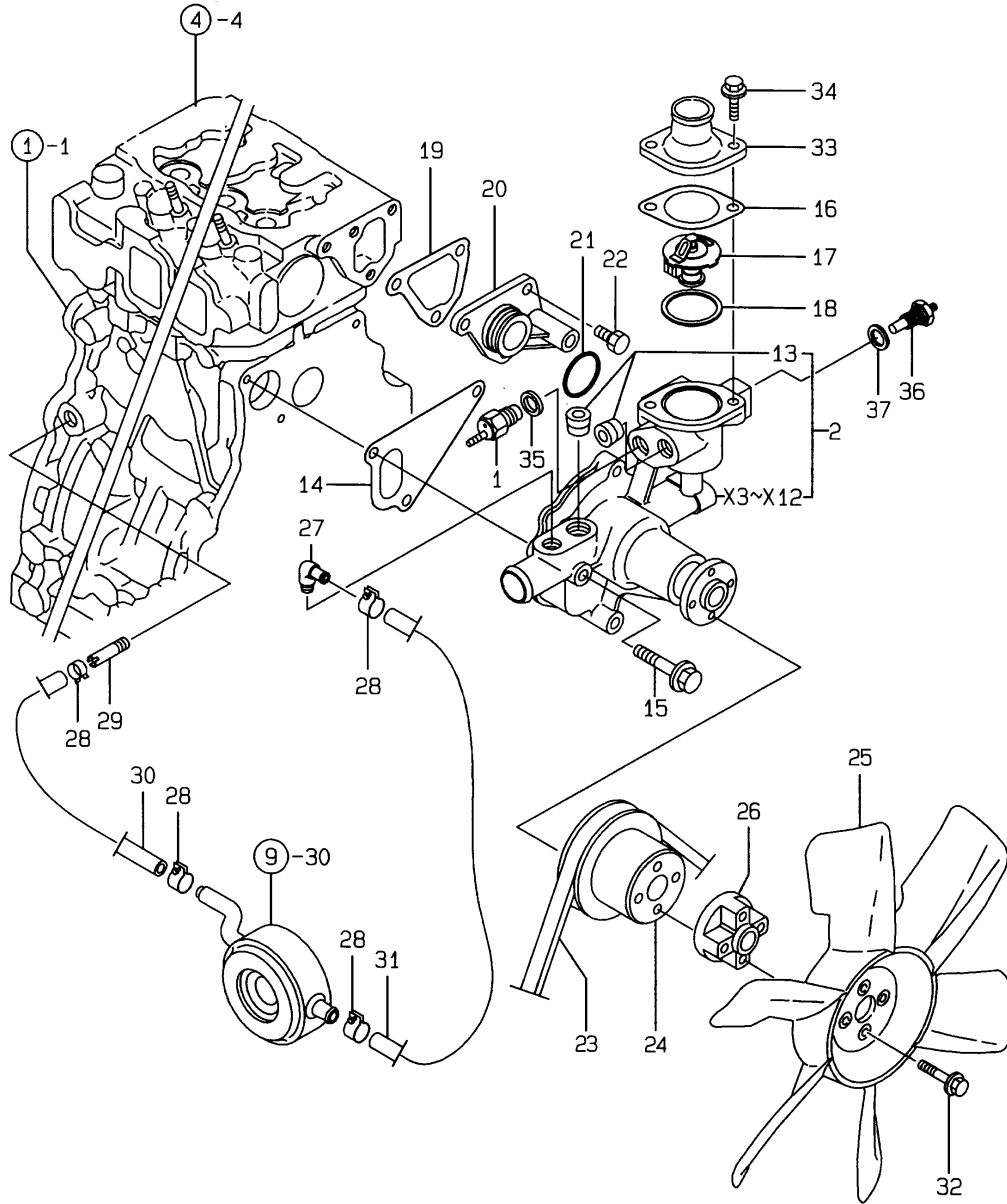
(D)=
(E)=
(F)=



X-MARK PARTS: NOT SOLD SEPARATELY.

REF.	LEV.	PARTS NO.	DESCRIPTION	QTY						I	R
				(A)	(B)	(C)	(D)	(E)	(F)		
1	1	129001-32001	PUMP ASSY, LUB. OIL	1							
14	1	129150-32020	GASKET, L.O. PUMP	1							
15	1	26450-060252	BOLT M 6X 25	4							
16	1	129128-34800	DIPSTICK, LUB. OIL	1							
I 16-1	1	129052-34800	DIPSTICK	1							N
(A=*1999.02)											
17	1	119260-34810	GUIDE, DIPSTICK	1							
18	1	129227-34810	GUIDE	1							
19	1	24311-240100	O-RING 1A P-10A	1							
20	1	26106-080162	BOLT M 8X 16 PLATED	1							
21	1	124160-39140	BOLT 10, PIPE JOINT	1							
22	1	129150-39450	PIPE ASSY, LUB. OIL	1							
26	1	121252-39450	SENDER, OIL PRESSURE	1							
27	1	124550-59820	BOLT 8, PIPE JOINT	1							
28	1	23414-080000	GASKET 8, ROUND	2							
29	1	23414-100000	GASKET 10, ROUND	2							
30	1	129012-33000	COOLER ASSY, LUB OIL	1							
31	2	129120-33040	PARALLEL PIN	2							
32	2	129120-33051	PLUG, DRAIN	1							
33	2	129120-33060	GASKET, COOLER DRAIN	1							
34	1	129120-35001	BRACKET ASSY COOLER	1							
36	2	23414-100000	GASKET 10, ROUND	1							
37	2	23881-100002	PLUG 10	1							
38	1	129120-35110	GASKET 80	1							
39	1	129120-35121	GASKET, (NON-ASB.)	1							
40	1	129150-35151	FILTER 80X80L	1							
41	1	129407-35300	STUD, LUB.OIL FILTER	1							
42	1	129150-35350	NUT	1							
43	1	24311-000160	O-RING 1A P-16.0	1							
44	1	26106-080252	BOLT M 8X 25 PLATED	3							
45	1	129150-35041	GASKET, (NON-ASB.)	1							
46	1	129129-35090	L.O. PICK-UP ASSY	1							
47	2	129129-35010	INLET	1							
48	2	129129-35080	PIPE,L.O. PICK-UP	1							
49	2	26106-080122	BOLT M 8X 12 PLATED	1							
50	1	26106-080352	BOLT M 8X 35 PLATED	2							

10.COOLING WATER SYSTEM



OCV10-G60700 10.COOLING WATER SYSTEM

(A)=3TNE88-CR
(B)=
(C)=

(D)=
(E)=
(F)=

REF.	LEV.	PARTS NO.	DESCRIPTION	Q'TY						I	R
				(A)	(B)	(C)	(D)	(E)	(F)		
1	1	121250-44901	SWITCH, THERMO(110 C	1							
2	1	129001-42002	PUMP ASSY, C.WATER	1							
13	2	23871-030000	PLUG PT3/8,SCREW	2							
14	1	129100-42020	GASKET, C.W. PUMP	1							
15	1	26106-080602	BOLT M 8X 60 PLATED	3							
16	1	129795-49551	GASKET, (NON-ASB.)	1							
17	1	129574-49800	THERMOSTAT	1							
18	1	129150-49811	GASKET, (NON-ASB.)	1							
19	1	129100-49840	GASKET, THERMO. CASE	1							
20	1	129001-42040	JOINT	1							
21	1	24321-000300	O-RING G30	1							
22	1	26106-080162	BOLT M 8X 16 PLATED	3							
23	1	119865-42290	V-BELT A36.5	1							
24	1	129403-42380	V-PULLEY(D=110)	1							
25	1	129354-44740	FAN, COOLING	1							
26	1	121267-44760	SPACER	1							
27	1	129103-49301	ELBOW PT 1/4	1							
28	1	23000-022000	CLAMP 22	4							
29	1	129122-44480	JOINT	1							
30	1	129012-49030	HOSE, WATER	1							
31	1	129403-49050	PIPE, COOLER-C.W.PUMP	1							
32	1	26106-060352	BOLT M 6X 35 PLATED	4							
33	1	129350-49530	COVER, THERMOSTAT	1							
34	1	26106-080202	BOLT M 8X 20 PLATED	2							
35	1	124465-44950	GASKET 16	1							
36	1	124250-49351	THERMOMETER	1							
37	1	129150-49360	GASKET 10	1							

11.FUEL INJECTION PUMP

OCV10-G60700 11.FUEL INJECTION PUMP

(A)=3TNE88-CR

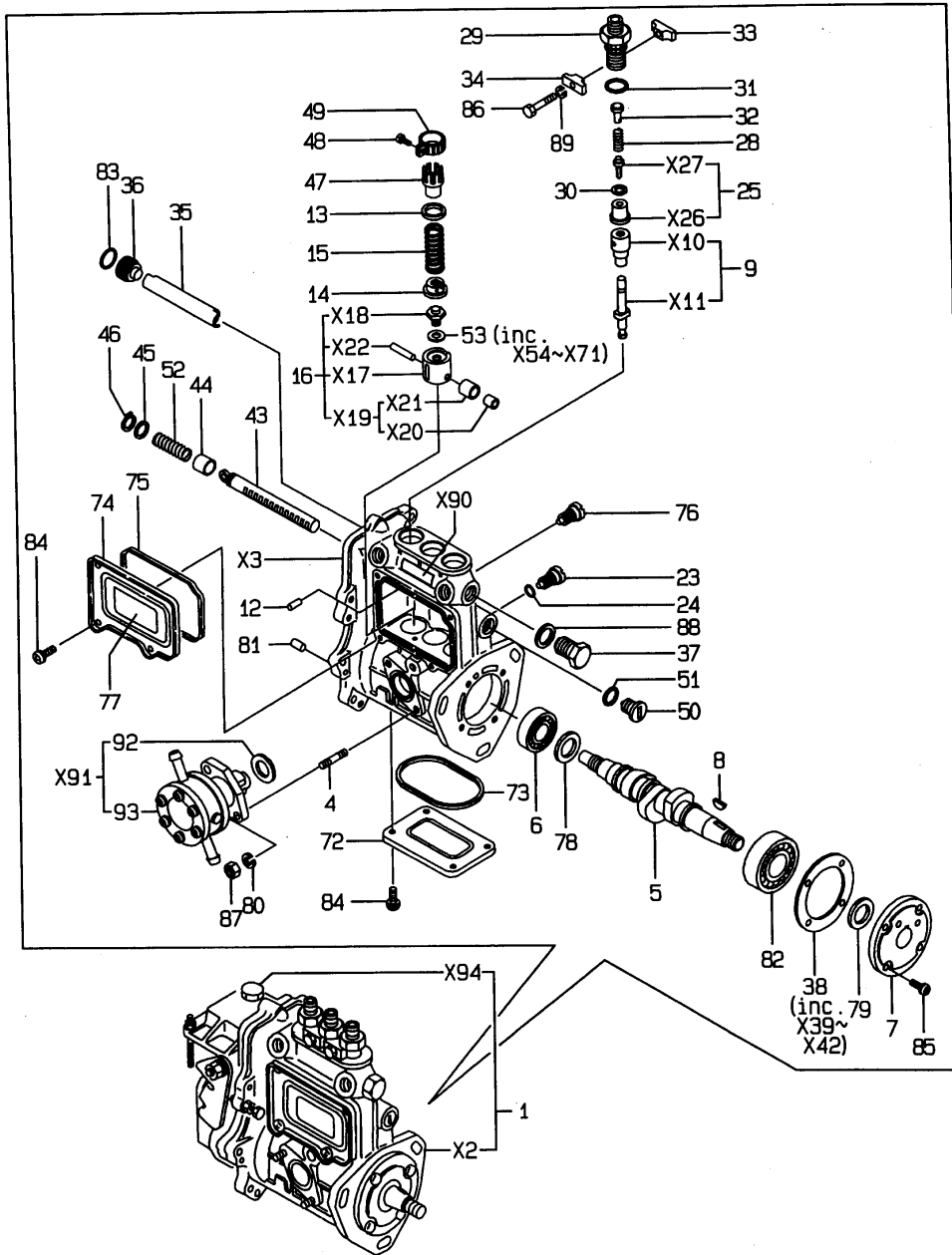
(B)=

(C)=

(D)=

(E)=

(F)=



Remarks
 (1) GOVERNOR (FIG.NO.12) IS INCORPORATED IN THIS FUEL INJECTION PUMP.
 (REF.NO.1).

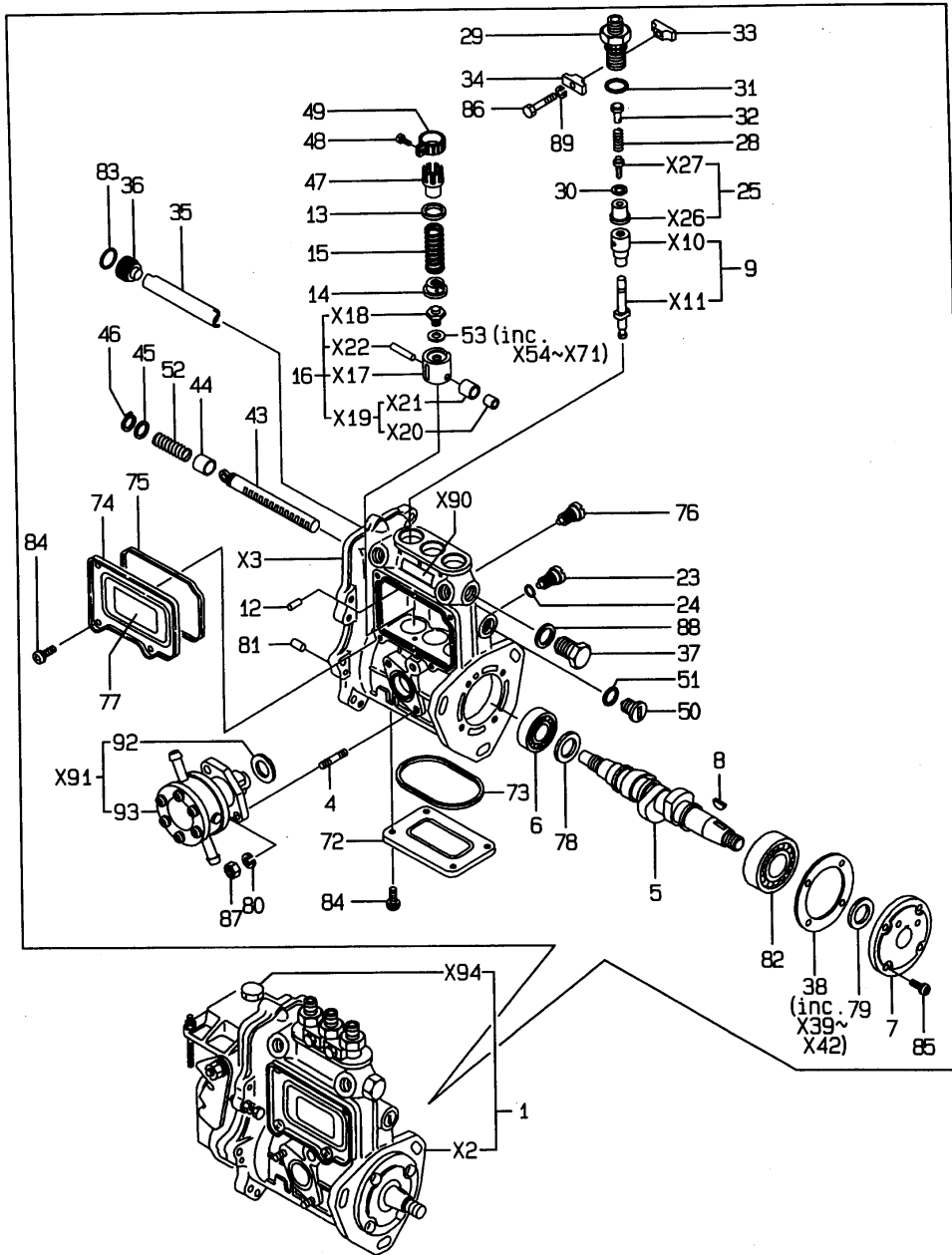
REF.	LEV.	PARTS NO.	DESCRIPTION	QTY						I	R
				(A)	(B)	(C)	(D)	(E)	(F)		
1	1	729051-51400	PUMP ASSY, F.INJECT	1							1
4	3	129155-51020	STUD, FEED PUMP	2							
5	3	119810-51040	CAMSHAFT	1							
6	3	129155-51050	BALL BEARING, THRUST	1							
7	3	129155-51060	CAM SHAFT SUPPORT	1							
8	3	122710-51090	KEY	1							
9	3	129051-51100	PLUNGER ASSY	3							
12	3	129155-51140	PIN, BARREL LOCKING	3							
13	3	174307-51170	RETAINER A	3							
14	3	129155-51180	SPRING SHOE, PLUNGER	3							
15	3	124950-51190	SPRING, PLUNGER	3							
16	3	129155-51200	TAPPET ASSY	3							
23	3	129155-51270	LOCKING, TAPPET	3							
24	3	129155-51280	O-RING S6	3							
25	3	129100-51300	VALVE W/SEAT, DELIV.	3							
28	3	129155-51320	SPRING, DELIV. VALVE	3							
29	3	129155-51340	GUARD, DELIVERY VALVE	3							
30	3	124550-51350	GASKET, DELIVERY	3							
31	3	124550-51370	O-RING, DELIVERY	3							
32	3	129155-51370	STOPPER, VALVE	3							
33	3	129155-51380	LOCKING (A)	2							
34	3	129155-51390	LOCKING (B)	2							
35	3	129155-51400	DEFLECTOR	1							
36	3	129155-51410	CHECK BOLT, DEFLECTOR	1							
37	3	129155-51420	PLUG (M16)	1							
38	3	129155-51450	SHIM SET, ADJUSTING	1							
43	3	129155-51500	RACK, CONTROL	1							
44	3	129155-51521	BUSH, RACK	1							
45	3	129155-51530	SPACER, AUX. SPRING	1							
46	3	129155-51540	CIRCLIP	1							
47	3	129155-51550	PINION, CONTROL	3							
48	3	122117-51560	SCREW, PINION	3							
49	3	174307-51560	PINION	3							
50	3	129155-51570	PLUG (M12)	1							
51	3	129155-51580	O-RING	1							
52	3	129155-51591	SPRING, RACK	1							
53	3	129155-51600	SHIM PACK	3							
72	3	129155-51700	COVER, LOWER	1							
73	3	129155-51710	GASKET, LOWER COVER	1							
74	3	129155-51750	COVER, SIDE	1							
75	3	129155-51760	GASKET, SIDE COVER	1							
76	3	129155-51790	LOCKING, RACK	1							
77	3	129156-51910	LABEL, CAUTION	1							
78	3	129155-51930	SPACER T=3.25	1							
79	3	129155-51940	SPACER T=1.5	1							
80	3	22217-060000	SPRING WASHER 6	2							
81	3	22351-050010	SPRING PIN 5X10	2							
82	3	24101-063034	BALL BEARING	1							
83	3	24341-000160	O-RING 1A S-16.0	1							
84	3	26022-050102	SCREW M 5X 10	8							
85	3	26022-060162	SCREW M 6X 16	4							

11.FUEL INJECTION PUMP

0CV10-G60700 11.FUEL INJECTION PUMP

(A)=3TNE88-CR
(B)=
(C)=

(D)=
(E)=
(F)=

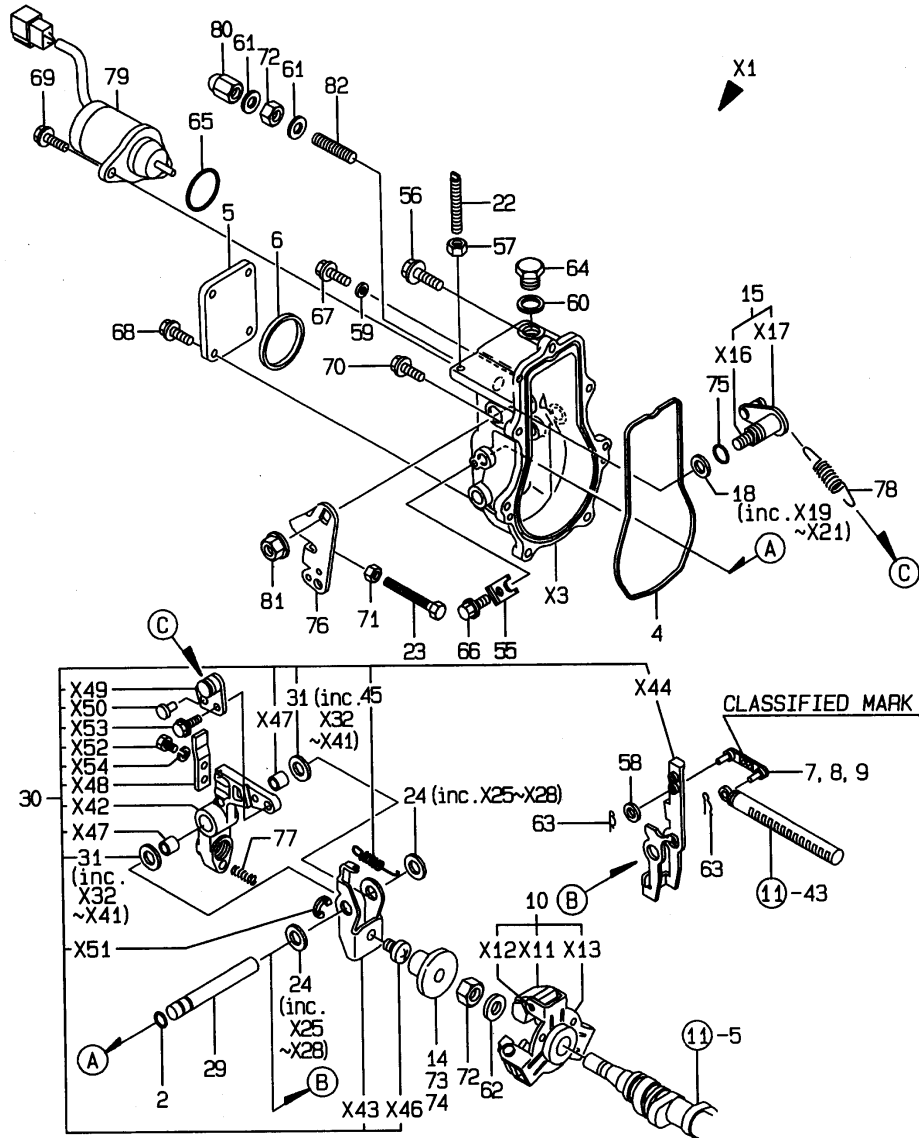


REF.	LEV.	PARTS NO.	DESCRIPTION	Q'TY						I	R
				(A)	(B)	(C)	(D)	(E)	(F)		
86	3	26116-050302	BOLT M 5X 30 PLATED	2							
87	3	26716-060002	NUT 6	2							
88	3	22190-160002	SEAL WASHER 16S	1							
89	3	22217-050000	SPRING WASHER 5	2							
92	3	129155-52050	GASKET	1							
93	3	129100-52100	PUMP ASSY, FUEL FEED	1							

Remarks
(1) GOVERNOR (FIG. NO. 12) IS INCORPORATED IN THIS FUEL INJECTION PUMP.
(REF. NO. 1).

12. GOVERNOR

OCV10-G60700 12.GOVERNOR



Remarks
 (1) SELECTIVE PARTS: CERTAIN THE CLASSIFICATION MARK, THEN PLACE YOUR ORDER.(REFER TO ILLUSTRATION).
 (2) SELECTIVE PARTS.
 * THIS FIGURE(GOVERNOR ASSY)IS INCORPORATED IN THE FUEL INJECTION PUMP ASSY(FIG.11).

(A)=3TNE88-CR

(B)=

(C)=

(D)=

(E)=

(F)=

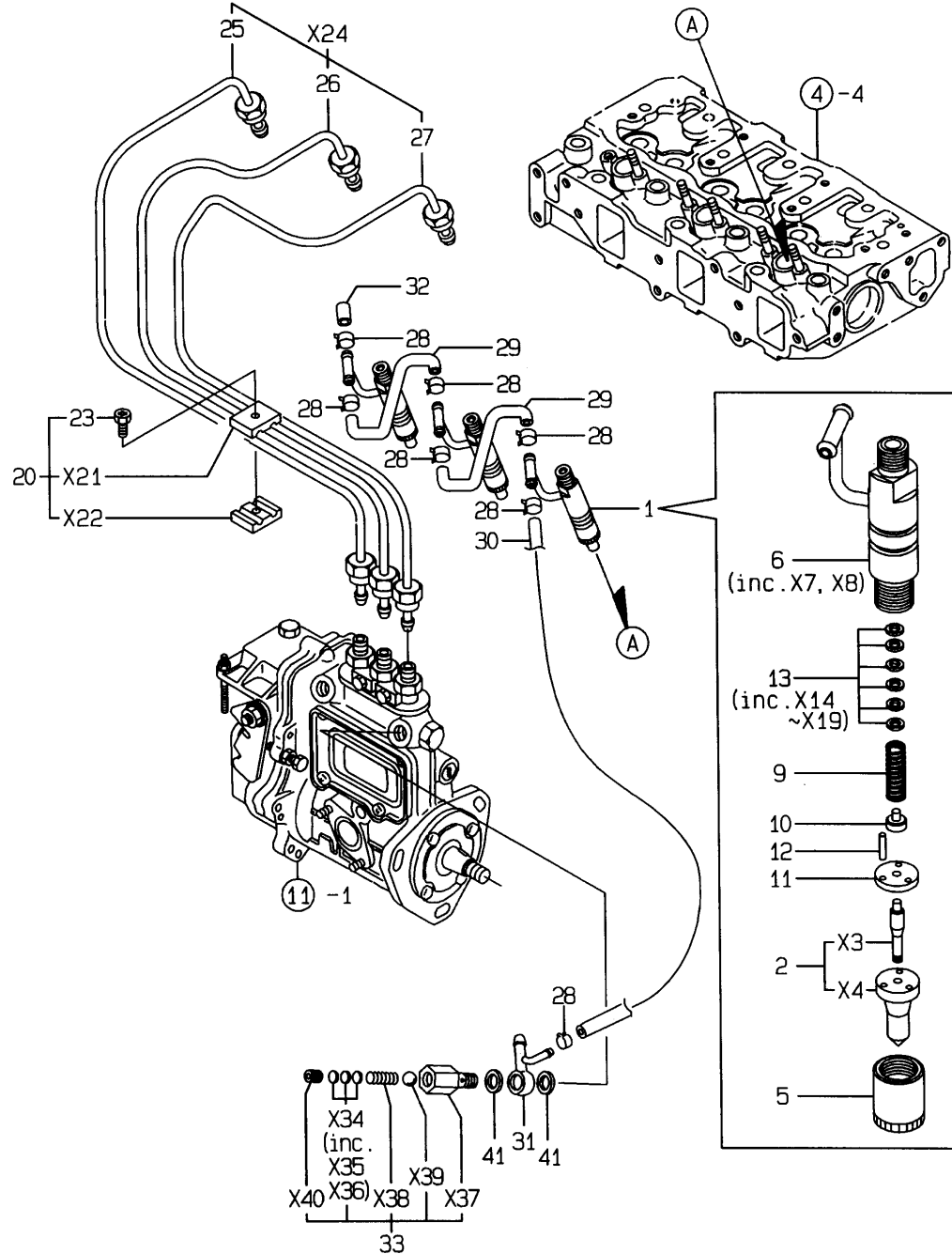
REF.	LEV.	PARTS NO.	DESCRIPTION	Q'TY						I	R
				(A)	(B)	(C)	(D)	(E)	(F)		
2	2	129155-51280	O-RING S6	1							
4	2	129052-61050	PACKING	1							
5	2	129052-61060	COVER	1							
6	2	129052-61070	PACKING	1							
7	2	129155-61120	LINK L=30(MARK 0	1							1
8	2	129155-61130	LINK L=31(MARK 1	1							1
9	2	129155-61140	LINK L=30.5(MARK 05)	1							1
10	2	129155-61201	WEIGHT ASSY, GOV.	1							
14	2	129155-61341	SLEEVE(L=25.5)	1							2
15	2	129100-61400	SHAFT ASSY, CONTROL	1							
18	2	129155-61430	SPACER, SHAFT	1							
22	2	129155-61450	BOLT, REVOL. LIMIT	1							
23	2	129155-61460	BOLT, IDLE LIMIT	1							
24	2	129155-61480	SPACER ASSY	2							
29	2	129052-61390	SHAFT, GOV. LEVER	1							
30	2	129052-61500	LEVER ASSY,GOVERNOR	1							
31	3	174307-51700	SHIM SET	2							
45	3	129052-61540	SPRING	1							
55	2	119660-61901	RETAINER, SHAFT	1							
56	2	129155-61950	BOLT, WASHER BASED	1							
57	2	124550-66370	LOCK NUT M 6	1							
58	2	22117-040000	WASHER 4	1							
59	2	22190-060003	SEAL WASER 6	1							
60	2	22190-100002	SEAL WASHER 10S	1							
61	2	22190-120002	SEAL WASHER 12	2							
62	2	22287-120000	WASHER 12	1							
63	2	22372-040000	SNAP PIN 4	2							
64	2	23887-100002	PLUG 10	1							
65	2	24341-000280	O-RING 1A S-28.0	1							
I	65-1	2	158552-61900	O-RING	1						N
(A=EXXXXX)											
66	2	26106-060102	BOLT 6X 10 PLATED	1							
67	2	26106-060102	BOLT 6X 10 PLATED	1							
68	2	26106-060102	BOLT 6X 10 PLATED	4							
69	2	26106-060142	BOLT M 6X 14 PLATED	2							
70	2	26106-060202	BOLT M 6X 20 PLATED	6							
71	2	26756-060002	LOCK NUT 6	1							
72	2	26776-120002	LOCK NUT M12 PLATED	2							
73	2	129155-61350	SLEEVE(L=24.9)	1							2
74	2	129155-61360	SLEEVE(L=25.2)	1							2
75	2	129155-61830	O-RING S10	1							
76	1	129100-61440	LEVER, CONTROL	1							
77	1	129100-61650	SPRING, FUEL CONTROL	1							
78	1	129486-61700	SPRING	1							
79	1	119653-77950	SOLENOID, STOP	1							
80	1	26687-120002	CAP NUT M12	1							
81	1	26366-080002	NUT M 8	1							
82	1	129155-61470	BOLT, FUEL CONTROL	1							

13.FUEL INJECTION VALVE

OCV10-G60700 13.FUEL INJECTION VALVE

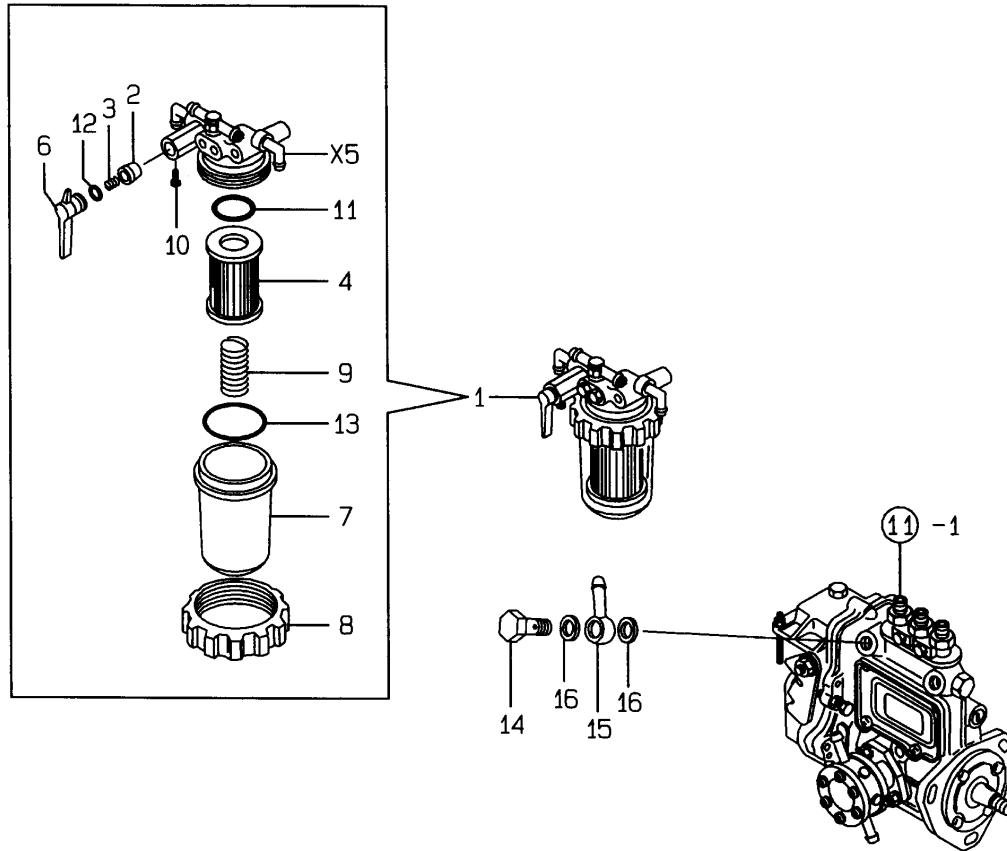
(A)=3TNE88-CR
(B)=
(C)=

(D)=
(E)=
(F)=



REF.	LEV.	PARTS NO.	DESCRIPTION	Q'TY						I	R
				(A)	(B)	(C)	(D)	(E)	(F)		
1	1	729503-53100	VALVE ASSY, F.INJECT	3							
2	2	129503-53000	NOZZLE ASSY,F.INJECT	3							
5	2	114250-53080	NUT, NOZZLE CASE	3							
6	2	129100-53100	HOLDER ASSY, NOZZLE	3							
9	2	114250-53120	SPRING, NOZZLE	3							
10	2	114250-53130	SEAT, NOZZLE SPRING	3							
11	2	114250-53140	PLATE, STOP	3							
12	2	114250-53210	PIN	6							
13	2	114250-53400	SHIM PACK	3							
20	1	119305-59120	RETAINER	2							
23	2	129150-59131	BOLT M4X14,HEX.SCKT.	2							
25	2	129052-59710	PIPE, FUEL INJECTION	1							
26	2	129052-59720	PIPE, FUEL INJECTION	1							
27	2	129052-59730	PIPE(1 ASSY	1							
28	1	124066-59100	CLAMP 8	7							
29	1	121250-59550	PIPE, FUEL	2							
30	1	119840-59560	PIPE, FUEL RETURN	1							
31	1	119840-59570	JOINT	1							
32	1	129150-59580	CAP	1							
33	1	129100-59951	VALVE ASSY, CHECK	1							
41	1	23414-120000	GASKET 12, ROUND	2							

14.FUEL LINE



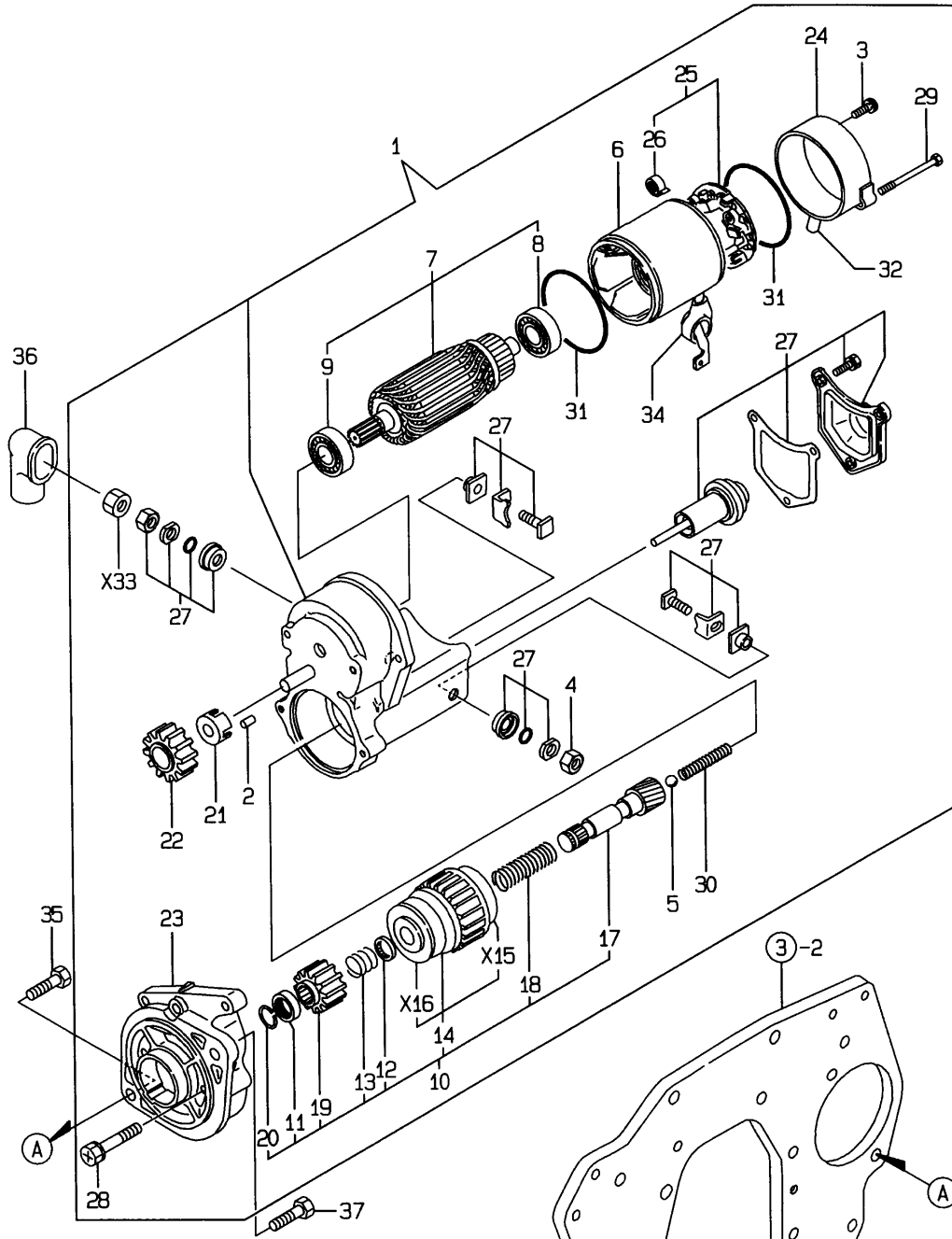
OCV10-G60700 14.FUEL LINE

(A)=3TNE88-CR
(B)=
(C)=

(D)=
(E)=
(F)=

REF.	LEV.	PARTS NO.	DESCRIPTION	Q'TY						I	R
				(A)	(B)	(C)	(D)	(E)	(F)		
1	1	129052-55620	STRAINER ASSY, FUEL	1							
2	2	104200-55321	VALVE, TAPER	1							
3	2	104200-55330	SPRING, TAPER VALVE	1							
4	2	129100-55650	ELEMENT, FUEL	1							
6	2	129100-55670	LEVER	1							
7	2	129100-55680	CUP, STRAINER	1							
8	2	129100-55690	RING, RETAINING	1							
9	2	129100-55700	SPRING	1							
10	2	104200-55750	SCREW M 4	1							
11	2	24311-000160	O-RING 1A P-16.0	1							
12	2	24311-240100	O-RING 1A P-10A	1							
13	2	24321-000650	O-RING 1A G-65.0	1							
14	1	103854-39140	BOLT, PIPE JOINT	1							
15	1	101304-59020	JOINT 12, PIPE	1							
16	1	22190-120002	SEAL WASHER 12	2							

15.STARTING MOTOR



x-MARK PARTS: NOT SOLD SEPARATELY.

OCV10-G60700 15.STARTING MOTOR

(A)=3TNE88-CR
(B)=
(C)=

(D)=
(E)=
(F)=

REF.	LEV.	PARTS NO.	DESCRIPTION	QTY						I	R
				(A)	(B)	(C)	(D)	(E)	(F)		
1	1	129129-77010	STARTER ASSY	1							
2	2	X0283060061	ROLLER	5							
3	2	129129-77460	SCREW	2							
4	2	X9490561370	NUT	1							
5	2	X9491200240	BALL	1							
6	2	129129-77210	YOKE ASSY	1							
7	2	129129-77220	ARMATURE ASSY	1							
8	3	129129-77230	BEARING	1							
9	3	129129-77240	BEARING	1							
10	2	129129-77250	STARTER ASSY	1							
11	3	X0280210230	NUT	1							
12	3	X0283270140	RETAINER	1							
13	3	X9491703371	SPRING, COIL	1							
14	3	129129-77390	CLUTCH ASSY, STARTER	1							
17	3	129129-77400	SHAFT	1							
18	3	129129-77410	SPRING, COIL	1							
19	3	129129-77420	PINION	1							
20	3	129129-77430	RING	1							
21	2	129129-77260	RETAINER	1							
22	2	129129-77270	PINION	1							
23	2	129129-77280	HOUSING	1							
24	2	129129-77290	FRAME	1							
25	2	129129-77300	HOLDER ASSY	1							
26	3	X9491730461	SPRING	4							
27	2	129129-77310	SWITCH ASSY	1							
28	2	129129-77320	BOLT	2							
29	2	129129-77330	BOLT	2							
30	2	129129-77340	SPRING	1							
31	2	129129-77350	O-RING	2							
32	2	129129-77362	COVER	1							
34	2	129129-77380	CAP	1							
35	1	26116-120202	BOLT M12X 20 PLATED	1							
36	1	124550-77030	COVER, TERMINAL	1							
37	1	129155-77060	BOLT, STARTER	1							

16. GENERATOR

OCV10-G60700 16.GENERATOR

(A)=3TNE88-CR

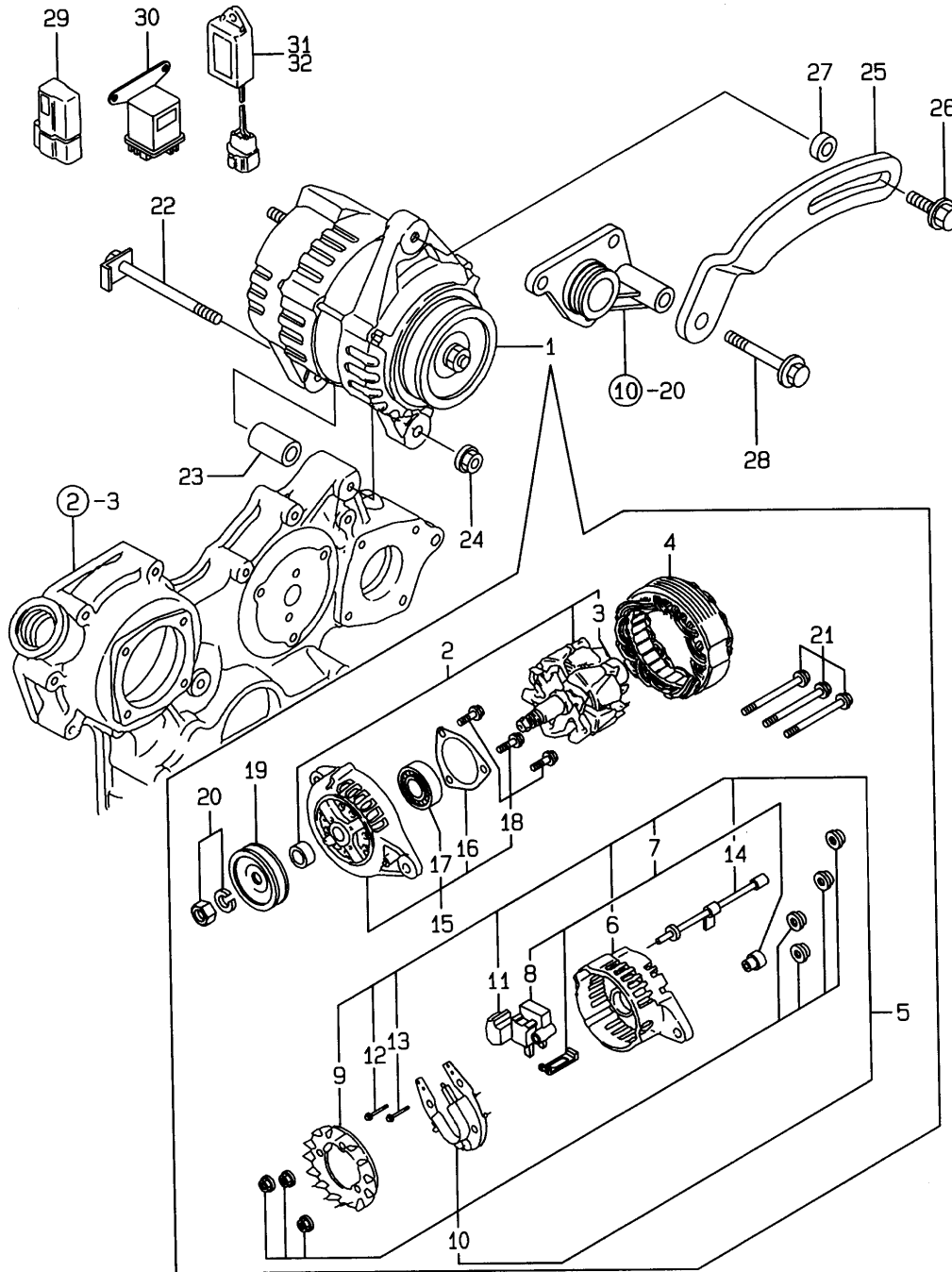
(B)=

(C)=

(D)=

(E)=

(F)=



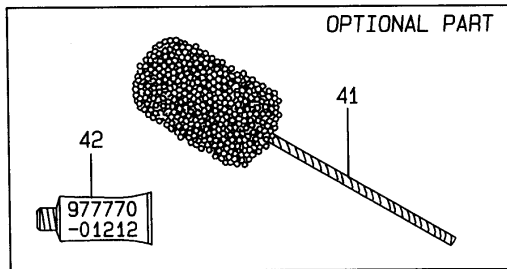
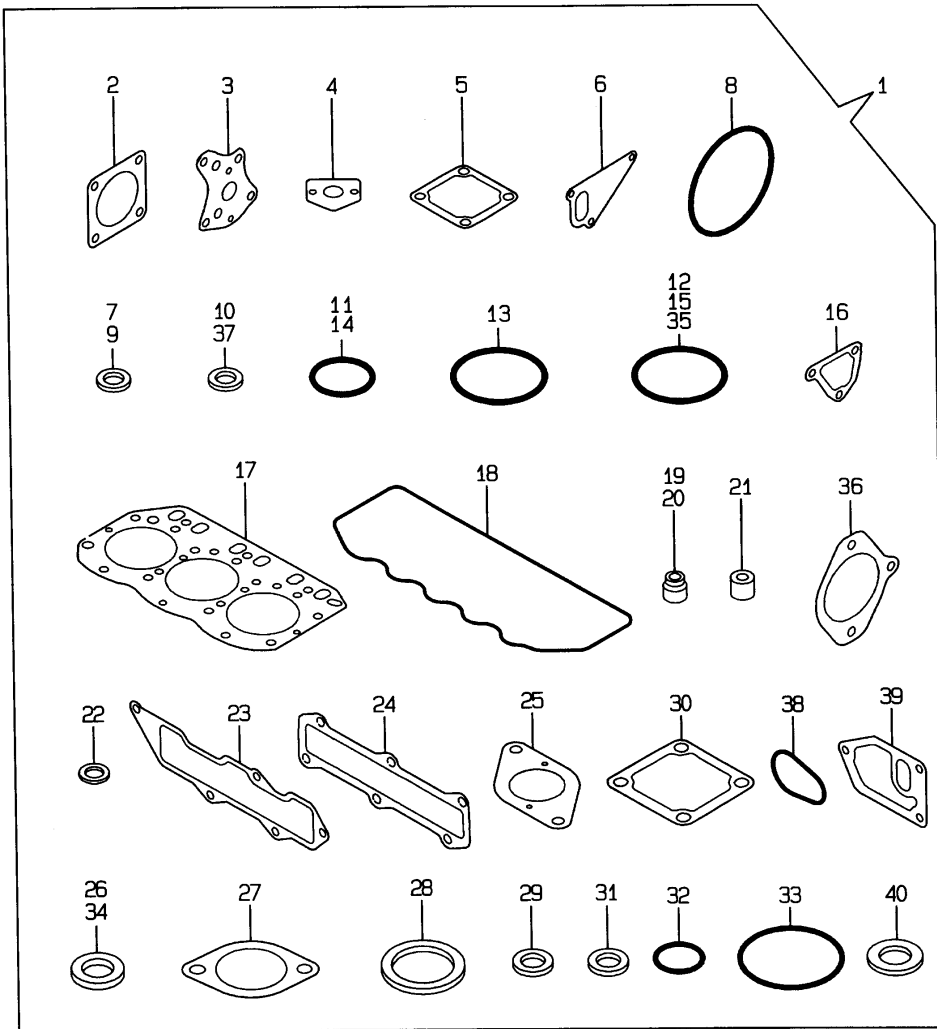
REF.	LEV.	PARTS NO.	DESCRIPTION	Q'TY						I	R
				(A)	(B)	(C)	(D)	(E)	(F)		
1	1	119836-77200	GENERATOR	1							
2	2	119836-77700	ROTOR ASSY	1							
3	3	119836-77850	BALL BEARING	1							
4	2	119836-77710	STATOR ASSY	1							
5	2	119836-77721	COVER ASSY, REAR	1							
6	3	119836-77730	COVER, REAR	1							
7	3	119836-77741	BRUSH ASSY,REGULATOR	1							
8	4	119836-77750	BRUSH ASSY	1							
9	3	119836-77760	GUIDE, FAN SIDE	1							
10	3	119836-77770	DIODE ASSY	1							
11	3	119836-77780	CONDENSER	1							
12	3	119836-77871	BOLT (1)	1							
13	3	119836-77880	BOLT (2)	1							
14	3	119836-77890	WIRE ASSY, LEAD	1							
15	2	119836-77790	COVER ASSY, FRONT	1							
16	3	119836-77800	RETAINER, BEARING	1							
17	3	119836-77840	BALL BEARING	1							
18	3	119836-77860	SCREW KID	1							
19	2	119836-77810	PULLEY	1							
20	2	119836-77820	NUT ASSY, PULLEY	1							
21	2	119836-77830	BOLT, THROUGH	1							
22	1	129136-77251	BOLT M 8X110	1							
23	1	119820-77340	SPACER	1							
24	1	129612-77260	NUT ,GENERATOR	1							
25	1	129051-77330	ADJUSTER, BELT	1							
26	1	119810-77340	BOLT	1							
27	1	106500-44810	SPACER	1							
28	1	26106-080502	BOLT M 8X 50 PLATED	1							
29	1	119643-66900	DIODE	1							
30	1	119650-77910	RELAY, GROW	1							
31	1	119632-77920	TIMER	1							
32	1	128300-77920	TIMER	1							

17.GASKET SET

OCV10-G60700 17.GASKET SET

(A)=3TNE88-CR
(B)=
(C)=

(D)=
(E)=
(F)=



REF.	LEV.	PARTS NO.	DESCRIPTION	QTY						I	R
				(A)	(B)	(C)	(D)	(E)	(F)		
1	1	729030-92660	GASKET SET(NON-ASB.)	1							1
2	2	124240-01883	GASKET, (NON-ASB.)	2							
3	2	129150-32020	GASKET, L.O. PUMP	1							
4	2	129150-35041	GASKET, (NON-ASB.)	1							
5	2	129100-77510	GASKET, AIR HEATER	1							
6	2	129100-42020	GASKET, C.W. PUMP	1							
7	2	22190-080002	SEAL WASHER 8S	5							
8	2	121850-51960	O-RING, F.I.PUMP	1							
9	2	23414-080000	GASKET 8, ROUND	2							
10	2	23414-100000	GASKET 10, ROUND	3							
11	2	24311-000160	O-RING 1A P-16.0	3							
12	2	24341-000500	O-RING 1A S-50.0	1							
13	2	24341-000240	O-RING 1A S-24.0	1							
14	2	24311-240100	O-RING 1A P-10A	1							
15	2	24311-000320	O-RING 1A P-32.0	2							
16	2	129100-49840	GASKET, THERMO. CASE	1							
17	2	129001-01340	GASKET, (NON-ASB.)	1							
18	2	129150-11310	GASKET, BONNET	1							
19	2	121400-11340	SEAL, VALVE STEM	3							
20	2	124460-11340	SEAL, VALVE STEM	3							
21	2	119625-11870	PROTECTOR, NOZZLE	3							
22	2	119625-11880	SEAT, NOZZLE	3							
23	2	129001-12110	GASKET,INT. MANIFOLD	1							
24	2	129001-13110	GASKET, EXH.MANIFOLD	1							
25	2	129107-13540	PACKING,SILENCER GSK	1							
26	2	124465-44950	GASKET 16	1							
27	2	129795-49551	GASKET, (NON-ASB.)	1							
28	2	129150-49811	GASKET, (NON-ASB.)	1							
29	2	22190-120002	SEAL WASHER 12	2							
30	2	129150-77511	GASKET, (NON-ASB.)	1							
31	2	23414-120000	GASKET 12, ROUND	2							
32	2	24311-000120	O-RING 1A P 12.0	3							
33	2	24321-000300	O-RING G30	1							
34	2	22190-160002	SEAL WASHER 16S	1							
35	2	24321-000850	O-RING 1A G-85.0	1							
36	2	171353-26081	GASKET,HO-P BRACKET	1							
37	2	129150-49360	GASKET 10	1							
38	2	129120-35110	GASKET 80	1							
39	2	129120-35121	GASKET, (NON-ASB.)	1							
40	2	129155-52050	GASKET	1							
41	1	129400-92420	FLEX HORN	1							1
42	1	977770-01212	GASKET, LIQUID	1							1

Remarks
(1) OPTIONAL PART.

(A)=3TNE88-CR
(B)=
(C)=

(D)=
(E)=
(F)=

REF.	LEV.	PARTS NO.	DESCRIPTION	Q'TY						I	R
				(A)	(B)	(C)	(D)	(E)	(F)		
1	1	729224-01000	BLOCK ASSY, SHORT	1							
2	2	129001-01000	BLOCK ASSY, CYLINDER	1							
3	2	129100-01580	PIN, PARALLEL	2							
4	2	129100-01580	PIN, PARALLEL	2							
5	2	729402-01650	CASE ASSY, OIL SEAL	1							
6	2	129795-01950	PIPE, KNOCK L=18	2							
7	2	129001-02800	MATAL ASSY, MAIN	4							
8	2	129150-02931	BEARING ASSY, THRUST	2							
9	2	129150-14200	TAPPET	6							
10	2	129129-14580	CAMSHAFT ASSY	1							
11	2	129001-21100	CRANKSHAFT ASSY	1							
12	2	129001-22081	PISTON ASSY	3							
13	2	129202-22300	PIN, PISTON	3							
14	2	729402-23100	ROD ASSY, CONNECTING	3							
15	2	129100-25061	SHAFT, IDLE GEAR	1							
16	2	129150-25101	GEAR, W/BUSH	1							
17	2	22252-000260	RING, 26	6							
18	2	22351-040010	PIN,4.0A X10	1							
19	2	22351-060012	PIN,6.0A X12	2							
20	2	22512-070140	KEY,7 X14	1							
21	2	26106-080142	BOLT, 8 X14	2							
22	2	26106-080452	BOLT, 8 X45	2							

NOT ILLUSTRATED

Remarks
* NOT ILLUSTRATED.