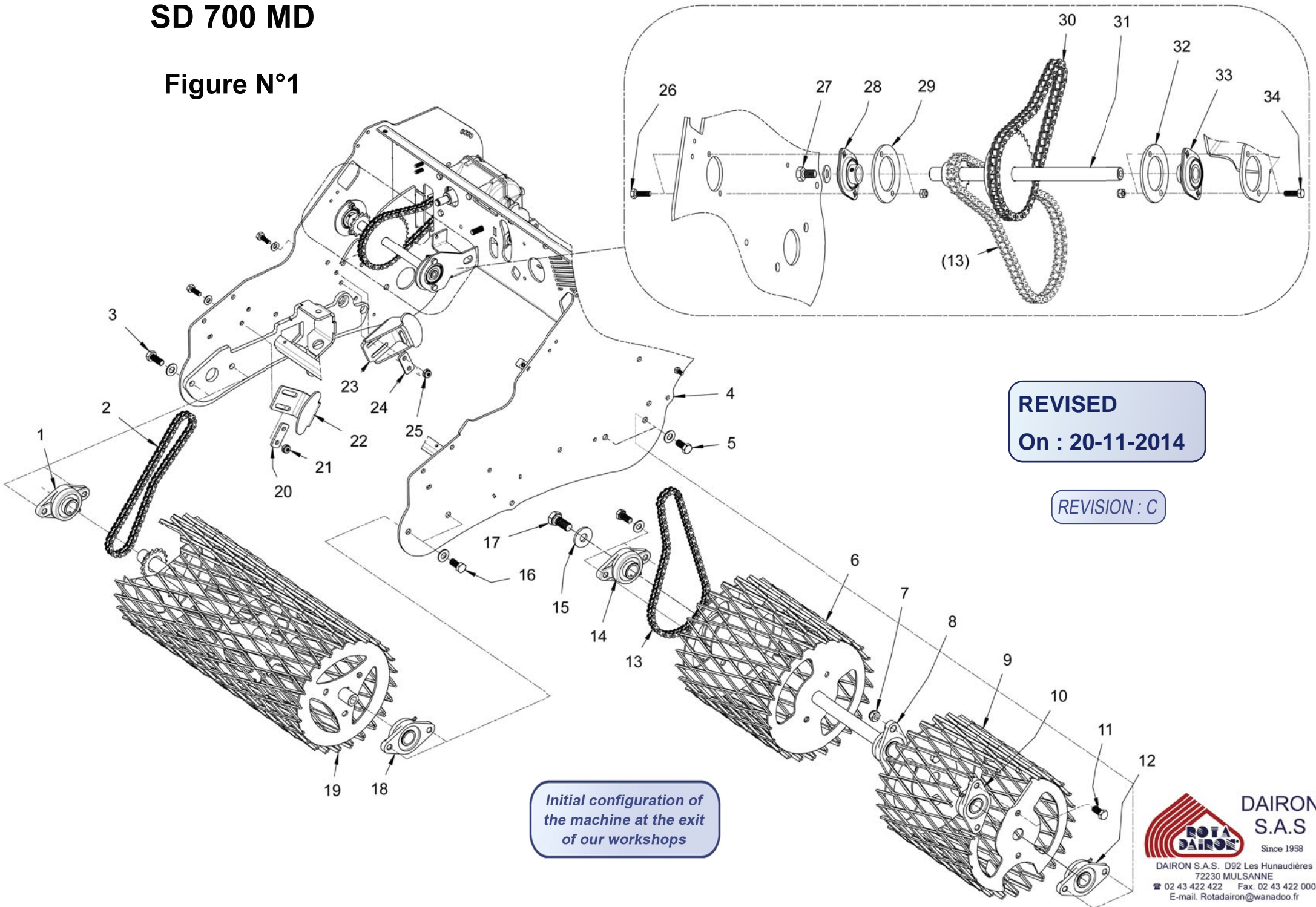


SD 700 MD

Figure N°1



REVISED
On : 20-11-2014

REVISION : C

Initial configuration of the machine at the exit of our workshops

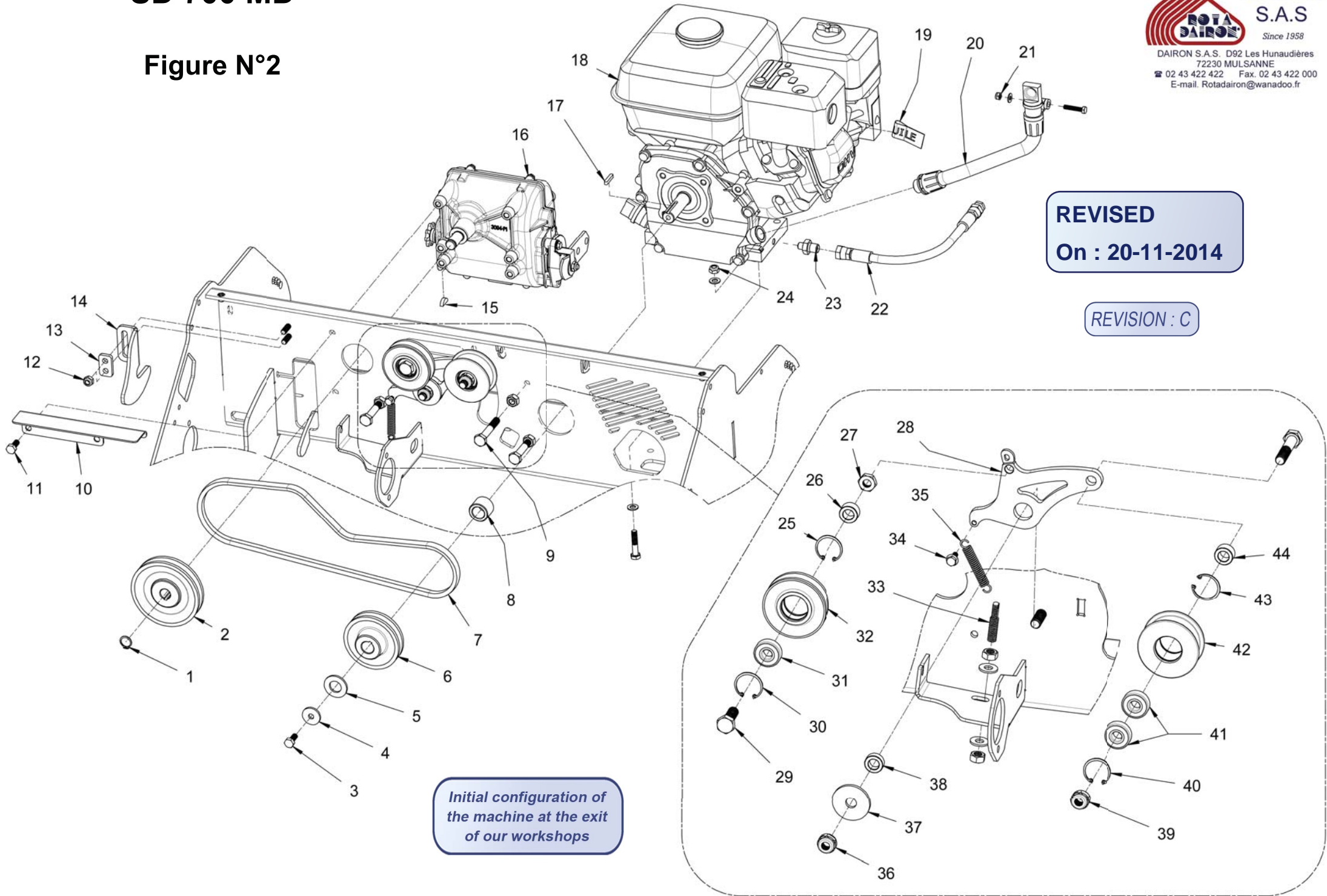
REV : C	PARTS LIST FIGURE N° 1 SD 700 MD FROM 9072 WITH - A017		20/11/2014
ITEM	DESIGNATION	PARTS REFERENCES	
		SD 700 MD	QTY
1	CAST IRON BEARING HOUSING UCFL 206 M14	690-1052	1
2	CHAIN 64 LINKS - 12.7 PITCH	175-1019	1
	MASTER LINK 12.7 PITCH	175-1009	1
3	HH SCREW M 14-35	850-2019	2
	WASHER MU 14	695-1025	2
4	FRAME	6701-270-1292	1
5	HH SCREW M 14-30	850-2005	4
	WASHER MU 14	695-1025	4
6	MD ROLLER RIGHT REAR	6701-280-1175	1
7	HEX NUT M 14	260-1013	2
8	CAST IRON BEARING HOUSING UCFL 206	690-1021	1
9	MD ROLLER LEFT REAR	6701-280-1173	1
10	CAST IRON BEARING HOUSING UCFL 206 M14	690-1052	1
11	HH SCREW M 14-30	850-2005	2
12	CAST IRON BEARING HOUSING UCFL 206 M14	690-1052	1
13	CHAIN 74 LINKS - 12.7 PITCH	175-1040	1
14	CAST IRON BEARING HOUSING UCFL 206 M14	690-1052	1
15	WASHER COMPENSATION	695-1052	1
16	HH SCREW M 14-30	850-2005	2
	WASHER MU 14	695-1025	2
17	HH SCREW M 20-45 YZP	850-2044	1
18	CAST IRON BEARING HOUSING UCFL 206 M14	690-1052	1
19	MD ROLLER	6701-505-1017	1
20	MENDING PLATE (ROLLER TENSIONER)	640-1603	1
21	HH SCREW M 10 - 30	850-2002	2
	WASHER MU 10 YZP	695-1017	2
	HEX NUT M 10	260-1011	2
22	CHAIN TENSIONER (SEEDER)	730-1015	1
23	CHAIN TENSIONER (ROLLER)	6701-730-1016	1
24	MENDING PLATE (ROLLER TENSIONER)	640-1603	1
25	HH SCREW M 10 - 35	850-2022	2
	WASHER MU 10 YZP	695-1017	2
	HEX NUT M 10	260-1011	2
26	HH SCREW M 8-25	850-2024	2
	HEX NUT M 8	260-1010	2
27	HH SCREW M 12-20 YZP	850-2085	1
	WASHER MU 12	695-1018	1
28	CAST-IRON BEARING SLFL 20	690-1022	1

Initial configuration of the machine at the exit of our workshops

REV : C	PARTS LIST FIGURE N° 1 SD 700 MD FROM 9072 WITH - A017		20/11/2014
ITEM	DESIGNATION	PARTS REFERENCES	
		SD 700 MD	QTY
29	FLANGE PLATE (BEARING HOUSING)	640-1596	1
30	CHAIN 56 LINKS - 12.7 PITCH	175-1041	1
31	DOUBLE AXLE SPROCKET	6701-100-1145	1
32	FLANGE PLATE (BEARING HOUSING)	640-1596	1
33	CAST-IRON BEARING SLFL 20	690-1022	1
34	HH SCREW M 8-25	850-2024	2
	HEX NUT M 8	260-1010	2

SD 700 MD

Figure N°2



REVISED
On : 20-11-2014

REVISION : C

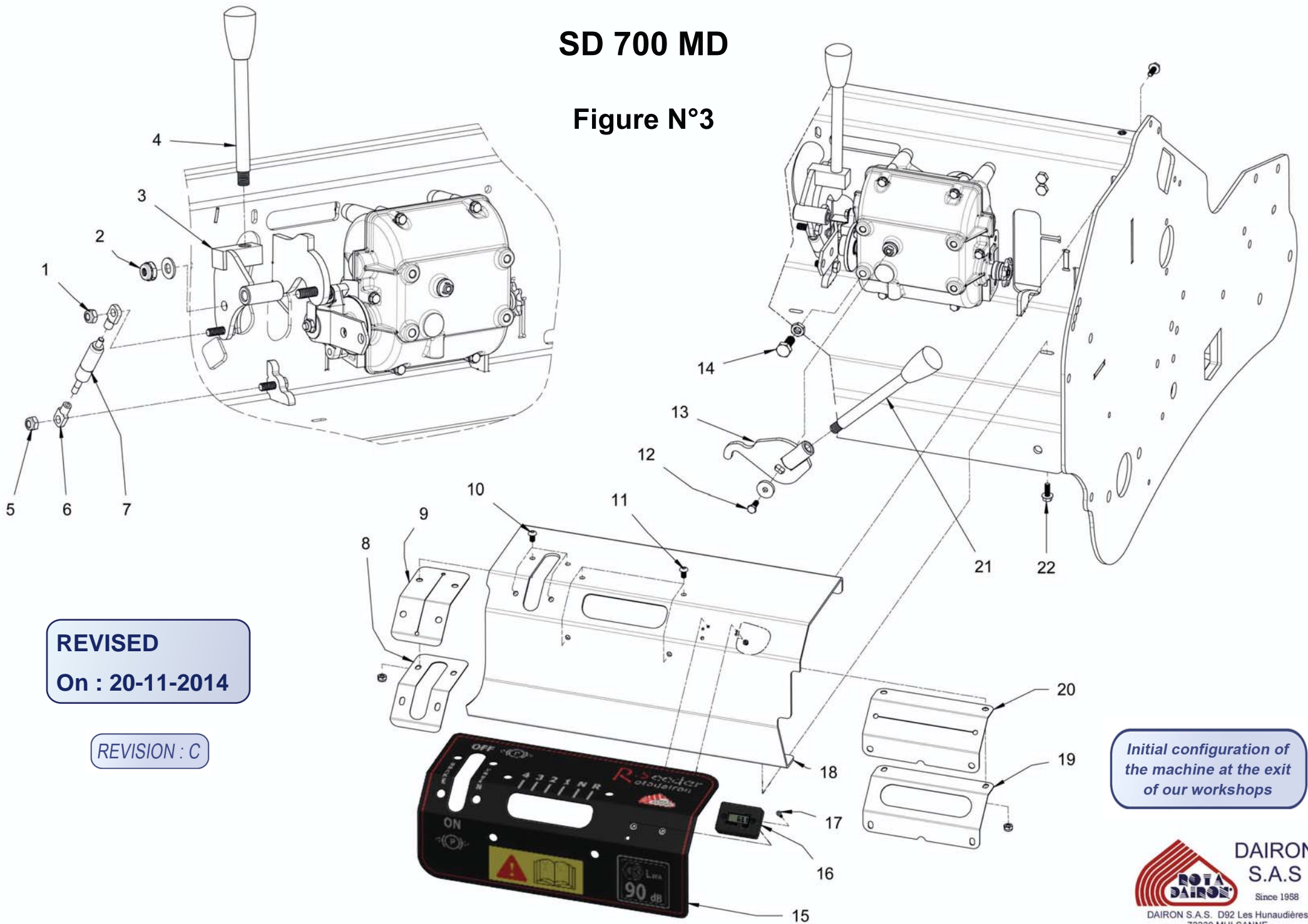
Initial configuration of the machine at the exit of our workshops

REV : C	PARTS LIST FIGURE N° 2 SD 700 MD FROM 9072 WITH - A017		20/11/2014
ITEM	DESIGNATION	PARTS REFERENCES	
		SD 700 MD	QTY
1	CIRCLIP Ø16 EXT	190-1033	1
2	V-PULLEY Ø 100 SPA	600-1101	1
3	HH SCREW 5/16 3/4 UNF	850-1075	1
4	WASHER Ø28 X Ø8.5 X H: 3	695-1136	1
5	WASHER MU 18 YZP	695-1125	1
6	V-PULLEY Ø 80 SPA	600-1100	1
7	V-BELT 4L390	196-1010	1
8	SOCKET Ø 30/Ø 19/ L : 24	240-1226	1
9	HH SCREW M 10-60 YZP	850-2053	3
	HEX NUT M 10	260-1024	3
10	V-BELT GUIDE RAIL	770-1528	1
11	HH SCREW 5/16 3/4 UNC	850-1069	3
12	HEX NUT M 8	260-1010	2
13	MENDING PLATE (TENSIONER)	640-1602	1
14	CHAIN TENSIONER	730-1013	1
15	WOODRUFF KEY 3/16 X 3/4	192-1011	1
16	GEARBOX	735-1010	1
17	PARALLEL KEY 3/16 X 3/16 X 1" TYPE A	192-1014	1
18	HONDA ENGINE	735-1005	1
19	DECAL - NO OIL	460-1031	1
20	OIL EXTENSION TUBE	735-1006	1
21	HH SCREW S/S A2 6 * 30	850-4020	1
	WASHER S/S A2 MU 6	695-4003	1
	NUT S/S A2 M6 DIN 985	260-4009	1
22	ENGINE DRAIN HOSE	850-2031	4
	UNION MALE BSP8/13 - M10x125	695-1062	8
	HH SCREW M 8-40 YZP	260-1010	4
23	WASHER MU 8 YZP	360-1242	1
24	HEX NUT M 8	360-1243	1
25	CIRCLIP Ø 32 INT	190-1034	1
26	PIVOT SOCKET	240-1031	1
27	HEX NUT S/S M12	260-4002	1
28	V-BELT ENGINE TENSIONER	730-1011	1

REV : C	PARTS LIST FIGURE N° 2 SD 700 MD FROM 9072 WITH - A017		20/11/2014
ITEM	DESIGNATION	PARTS REFERENCES	
		SD 700 MD	QTY
29	HH SCREW M 12-35	850-4027	1
	CIRCLIP Ø 32 INT	695-4005	2
	BEARING 6201 2RS	260-4006	2
30	PULLEY (TENSIONER)	850-2018	1
31	SPRING SET SCREW	190-1034	1
32	WASHER S/S A2 MU 10	690-1058	1
33	HEX NUT S/S M10	600-1115	1
34	HEX WASHER HEAD SCREW S/S A2 6 * 10	850-4012	1
35	SPRING	660-1016	1
36	HEX NUT M 12	260-1012	1
37	WASHER Ø13 / Ø42 / 4	695-1027	1
38	SOCKET	240-1030	1
39	HH SCREW M 12-60	850-2009	1
	HEX NUT M 12	260-1012	1
40	CIRCLIP Ø 32 INT	190-1034	1
41	BEARING 6201 2RS	690-1058	2
42	IDLER WHEEL	600-1116	1
43	CIRCLIP Ø 32 INT	190-1034	1
44	PIVOT SOCKET	240-1031	1

SD 700 MD

Figure N°3



REV : C	PARTS LIST FIGURE N° 3 SD 700 MD FROM 9072 WITH - A017		20/11/2014
ITEM	DESIGNATION	PARTS REFERENCES	
		SD 700 MD	QTY
1	HEX NUT M 8	260-1010	1
2	HEX NUT M 10	260-1011	1
	WASHER MU 10 YZP	695-1017	1
3	PARKING BRAKE LEVER	6702-640-1568	1
4	PARKING LEVER	610-1031	1
5	HEX NUT M 8	260-1010	1
6	EYE HINGE (GAS JACK)	780-1005	2
7	GAS JACK (20-70-350N)	780-1002	1
8	CLAMP PLATE (PARKING RUBBER SEAL)	640-1570	1
9	PARKING LEVER RUBBER SEAL	400-1057	1
10	BHCS SCREW S/S A2 6 * 10	850-4043	4
	NUT S/S A2 M6 DIN 985	260-4009	4
11	BHCS SCREW S/S A2 6 * 10	850-4043	4
	NUT S/S A2 M6 DIN 985	260-4009	4
12	HH SCREW 1/4 3/4 UNF	850-1076	1
	WASHER MU 6 YZP	695-1164	1
13	GEAR SHIFT LEVER	6702-640-1569	1
14	HH SCREW M 10 -25	850-2003	1
	HEX NUT S/S M10	260-4001	1
15	CONTROL PANEL	460-1064	1
16	TACHOMETER	255-1001	1
17	HSHC SCREW M3 - 12 S/S A2	850-4042	2
	HEX LOCKING NUT M3 S/S	260-4016	2
18	GEARBOX CASING	6702-770-1526	1
19	CLAMP PLATE (GEAR SHIFT RUBBER SEAL)	640-1571	1
20	GEAR SHIFT RUBBER SEAL	400-1056	1
21	PARKING LEVER	610-1031	1
22	HEX WASHER HEAD SCREW S/S A2 6 * 16	850-4024	4

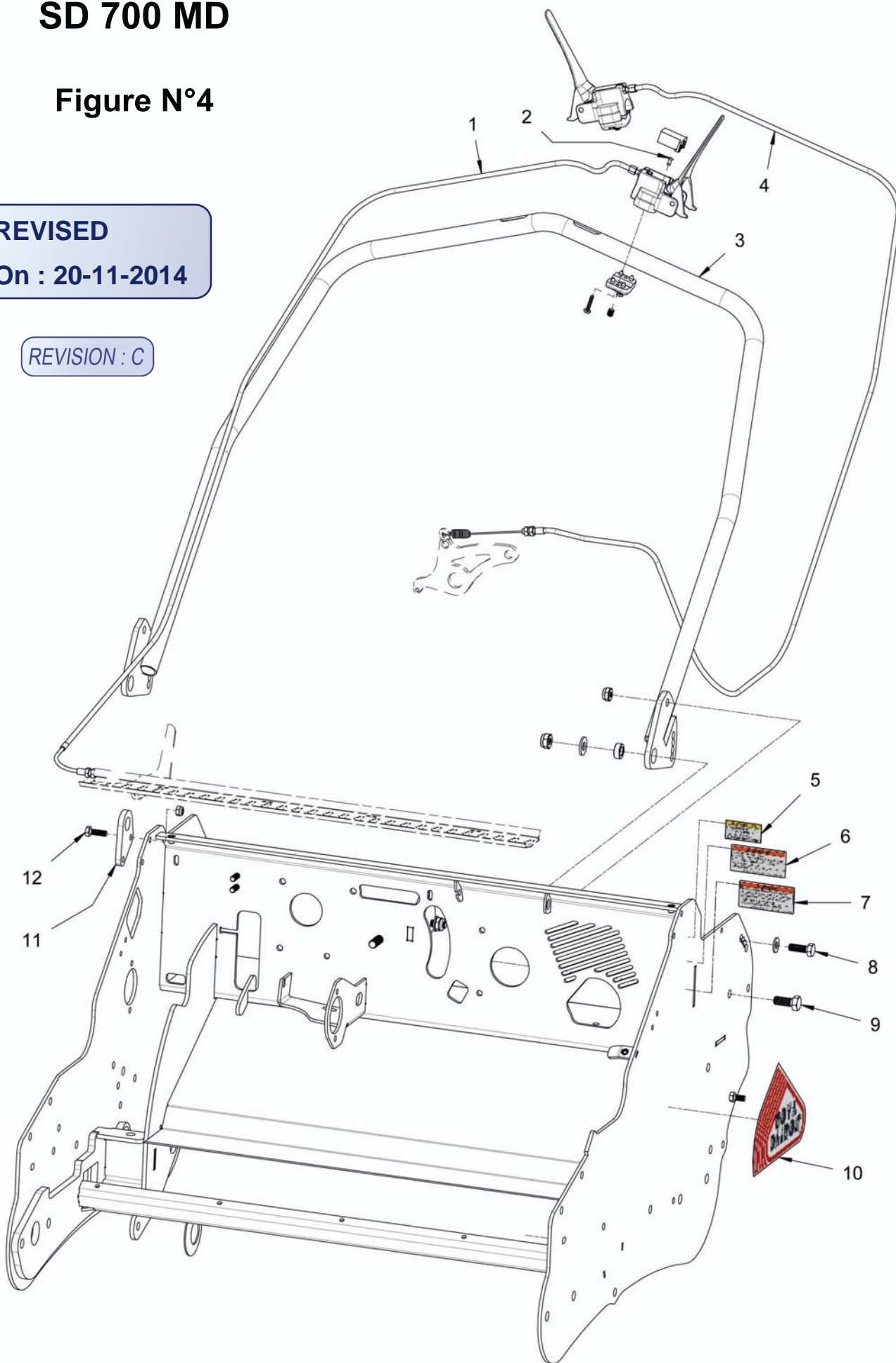
SD 700 MD

Figure N°4

REVISED

On : 20-11-2014

REVISION : C



Initial configuration of
the machine at the exit
of our workshops

REV : C	PARTS LIST FIGURE N° 4 SD 700 MD FROM 9072 WITH - A017		20/11/2014
ITEM	DESIGNATION	PARTS REFERENCES	
		SD 700 MD	QTY
1	SEEDER HANDLE	6701-295-1014	1
2	RIVET Ø 4 - 8 S/S	697-1014	2
3	HANDLEBAR	6702-350-1004	1
4	CLUTCH HANDLE	6701-295-1013	1
5	DECAL BURN HAZARD Français	Supply by Honda	1
6	DECAL GAS Français	Supply by Honda	1
7	DECAL GAS English	Supply by Honda	1
8	HH SCREW M 10 - 30	850-2002	4
	WASHER MU 10 YZP	695-1018	4
	HEX NUT M 10	260-1011	4
9	HH SCREW M 12-30	850-2016	2
	SOCKET	240-1030	2
	WASHER MU 12	695-1018	2
	HEX NUT M 12	260-1012	2
10	DECAL - DAIRON LOGO	460-1001	1
11	LIFTING RING	115-1002	2
12	HH SCREW M 8-25	850-2024	4
	HEX NUT M 8	260-1010	4

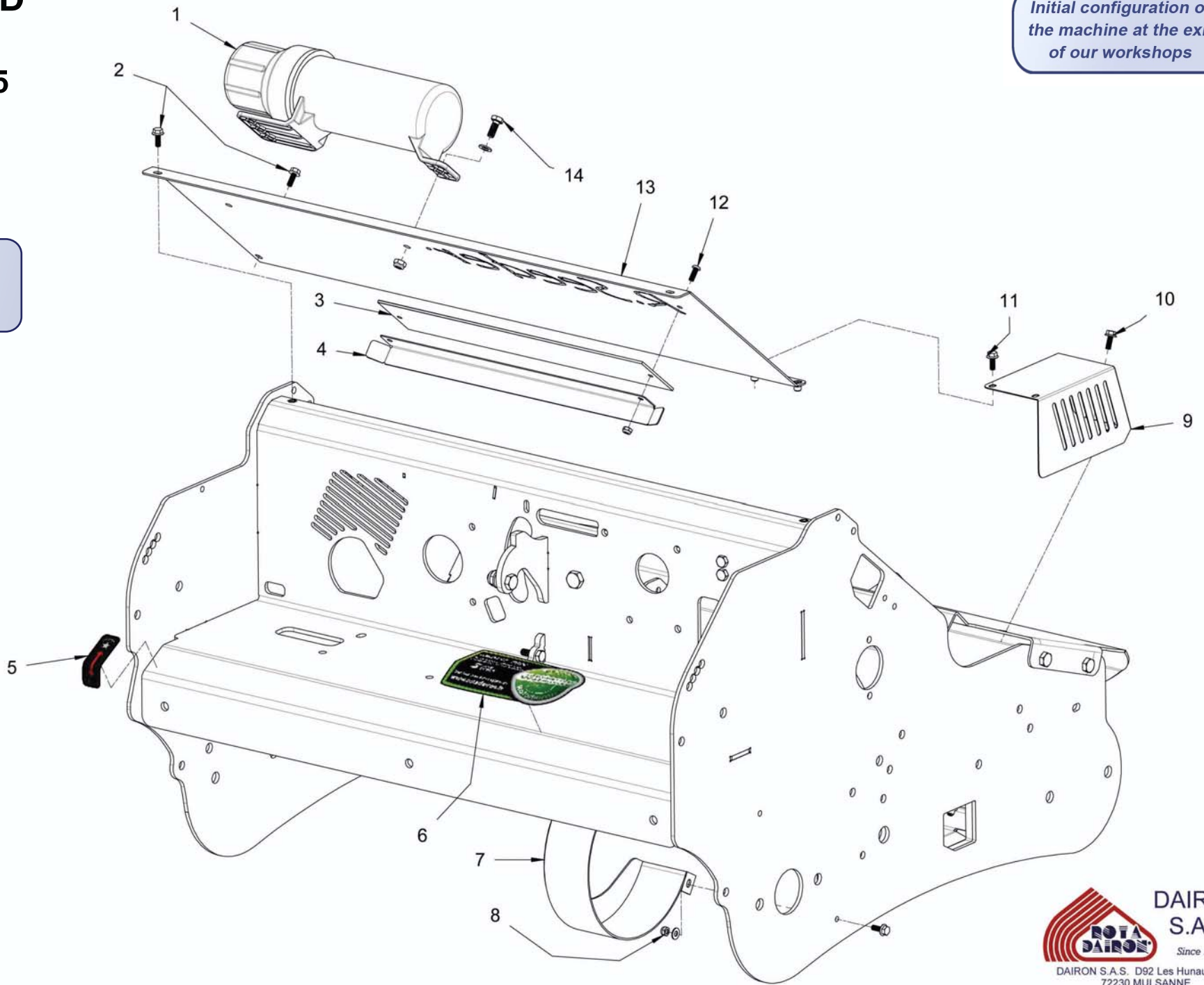
SD 700 MD

Figure N°5

Initial configuration of the machine at the exit of our workshops

REVISED
On : 20-11-2014

REVISION : C

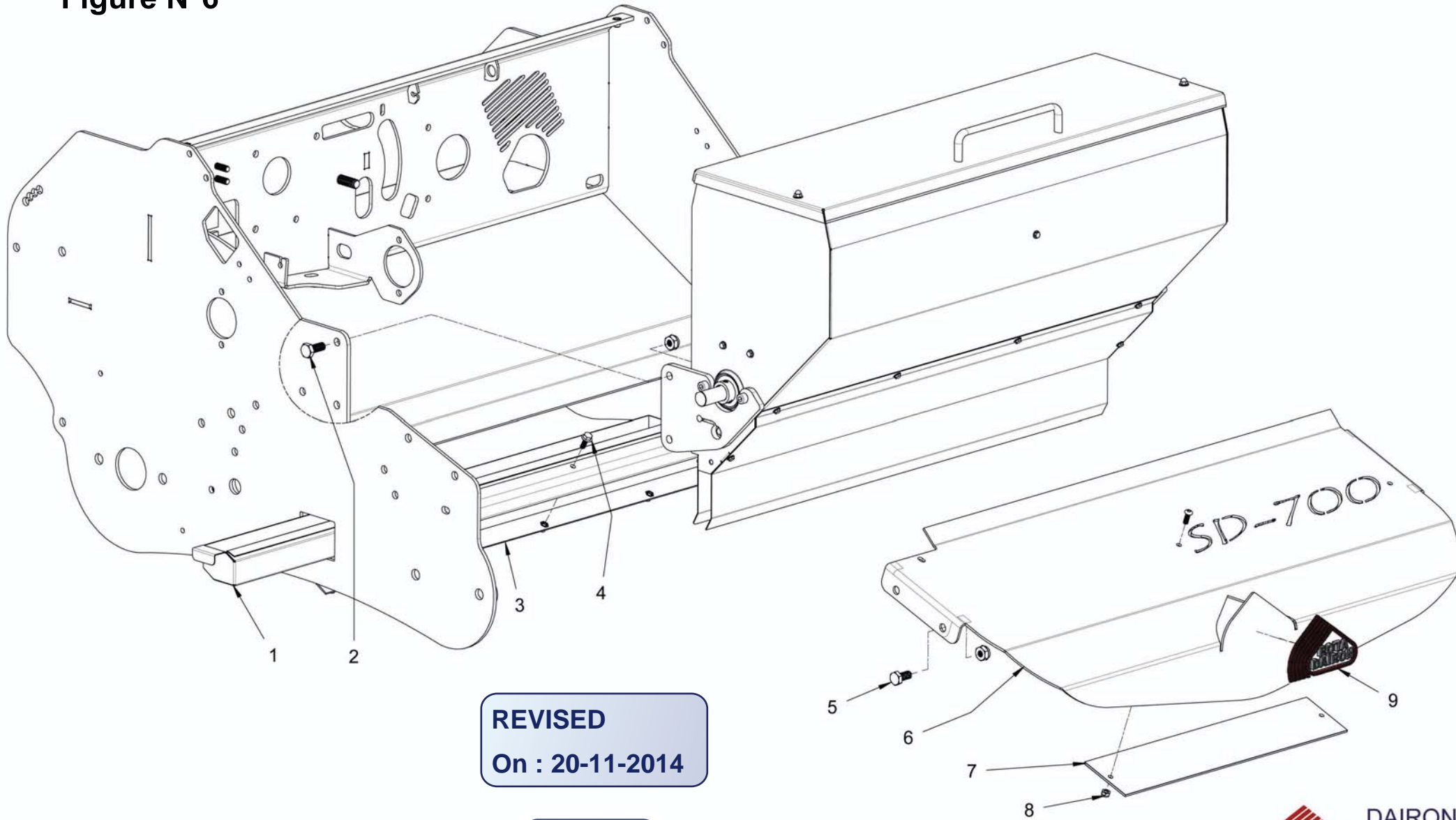


REV : C	PARTS LIST FIGURE N° 5 SD 700 MD FROM 9072 WITH - A017		20/11/2014
ITEM	DESIGNATION	PARTS REFERENCES	
		SD 700 MD	QTY
1	INSTRUCTION MANUAL BOX	180-1028	1
2	HEX WASHER HEAD SCREW S/S A2 6 * 16	850-4024	3
3	RED PLATE	640-1579	1
4	LOCK PLATE (COLLECTING TROUGH)	770-1545	1
5	ROTOR POSITION INDICATOR	460-1069	1
6	DECAL - EXTENDED WARRANTY	460-1066	1
7	RIGHT CHAIN CASE	6701-270-1289	1
8	HEX WASHER HEAD SCREW S/S A2 6 * 16	850-4024	2
	WASHER S/S A2 MU 6	695-4003	2
	NUT S/S A2 M6 DIN 985	260-4009	2
9	SEEDER SPROCKET CASING	6701-770-1542	1
10	HEX WASHER HEAD SCREW S/S A2 6 * 16	850-4024	1
11	HEX WASHER HEAD SCREW S/S A2 6 * 16	850-4024	2
12	BHCS SCREW S/S A2 6 * 16	850-4029	2
	NUT S/S A2 M6 DIN 985	260-4009	2
13	CASING	6701-770-1520	1
14	HH SCREW S/S A2 8 * 20 Din 933	850-4034	2
	WASHER S/S A2 MU 8	695-4009	1
	NUT S/S A2 M8 DIN 985	260-4005	2

SD 700 MD

Initial configuration of the machine at the exit of our workshops

Figure N°6



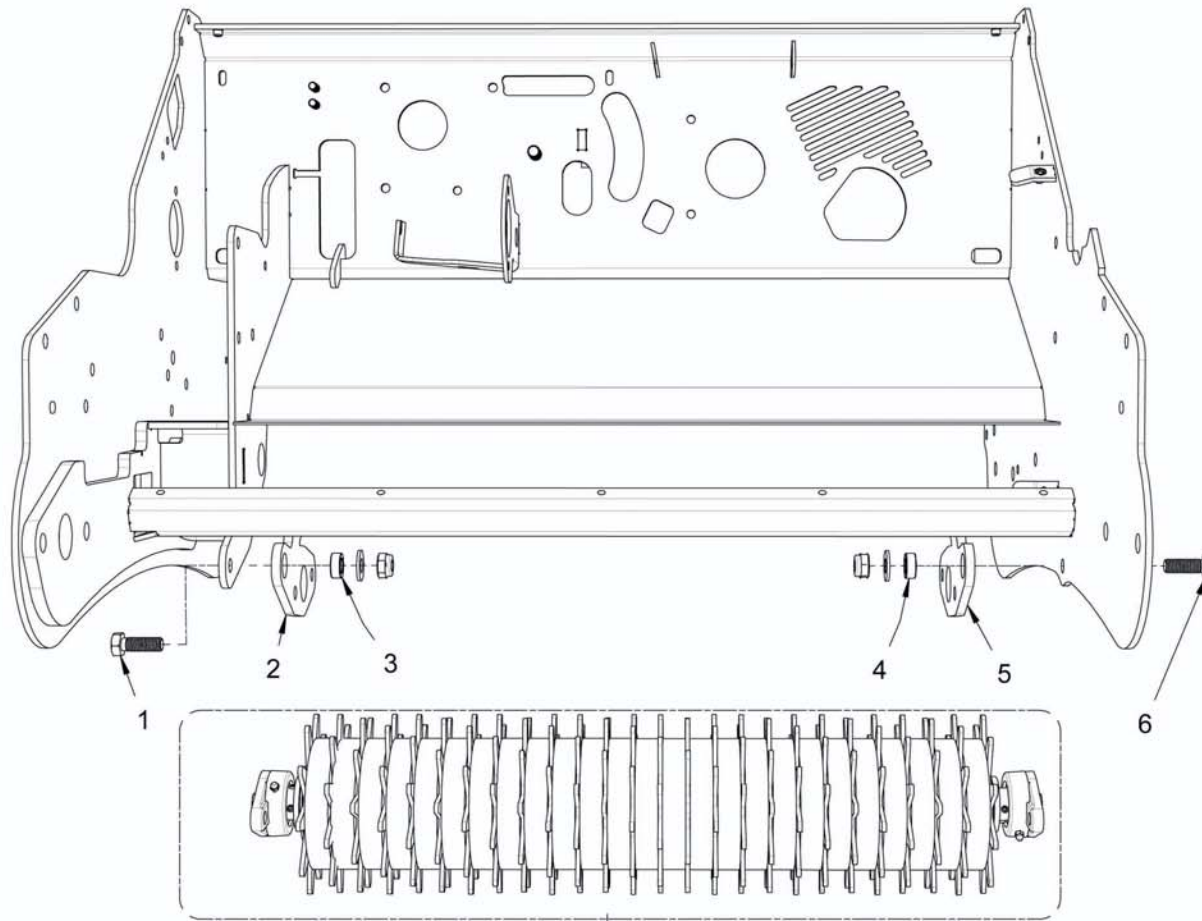
REVISED
On : 20-11-2014

REVISION : C

REV : C	PARTS LIST FIGURE N° 6 SD 700 MD FROM 9072 WITH - A017		20/11/2014
ITEM	DESIGNATION	PARTS REFERENCES	
		SD 700 MD	QTY
1	PLATE (COLLECTING TROUGH)	770-1518	1
2	HH SCREW M 10-25 YZP	850-2003	4
	HEX NUT M 10	260-1011	4
3	SHEER STAND (COLLETING TROUGH)	6701-770-1544	1
4	HEX WASHER HEAD SCREW S/S A2 6 * 16	850-4024	5
5	HH SCREW M 10-20 YZP	850-2003	4
	HEX NUT M 10	260-1011	4
6	FRONT GUARD PLATE	770-1553	1
7	RED PLATE	640-1579	1
8	BHCS SCREW S/S A2 6 * 16	850-4029	2
	NUT S/S A2 M6 DIN 985	260-4009	2
9	DECAL - DAIRON LOGO	460-1077	1

SD 700 MD

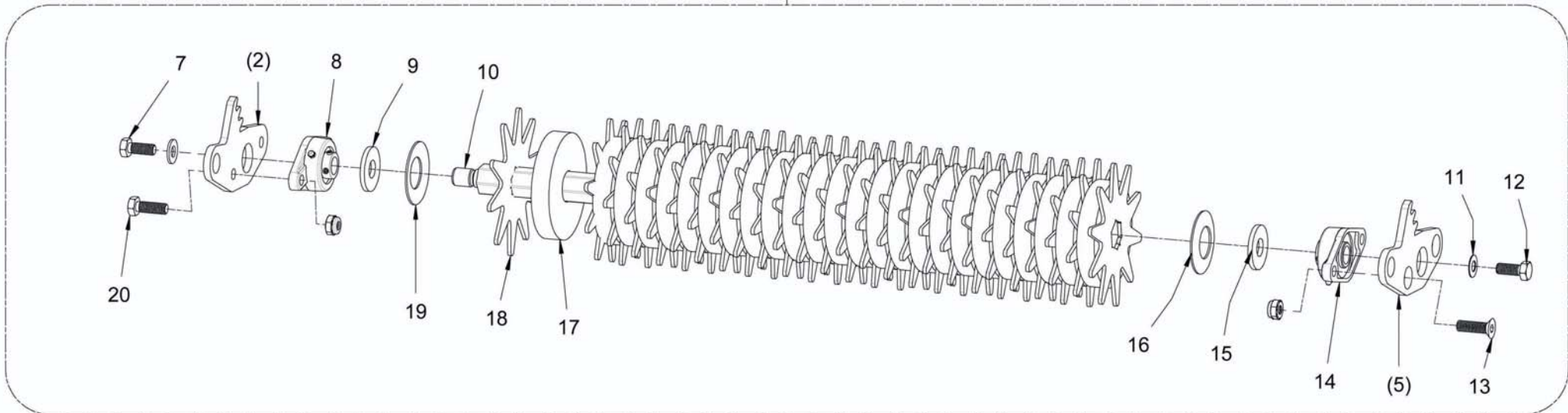
Figure N°7



REVISED
On : 20-11-2014

REVISION : C

*Initial configuration of
the machine at the exit
of our workshops*



REV : C	PARTS LIST FIGURE N° 7 SD 700 MD FROM 9072 WITH - A017		20/11/2014
ITEM	DESIGNATION	PARTS REFERENCES	
		SD 700 MD	QTY
1	HH SCREW M 12-35	850-2018	1
	WASHER MU 12	695-1018	1
	HEX NUT M 12	260-1012	1
2	BLANK (ROTOR SUPPORT PLATE)	032-1159	1
3	SOCKET	240-1030	1
4	SOCKET	240-1030	1
5	ROTOR SUPPORT PLATE	640-1565	1
6	HH SCREW M 12-35	850-2018	1
	WASHER MU 12	695-1018	1
	HEX NUT M 12	260-1012	1
7	HH SCREW M 12-30	850-2016	1
	WASHER MU 12	695-1018	1
8	CAST IRON BEARING HOUSING UCFL 204	690-1040	1
9	WASHER COMPENSATION	695-1052	1
10	ROTOR SHAFT	100-1141	1
11	BELLEVILLE WASHER	695-1068	1
12	HH SCREW M 12-30	850-2016	1
13	FHCS SCREW S/S A2 12 * 40	850-4025	2
	HEX NUT M 12	260-1012	2
14	CAST IRON BEARING HOUSING UCFL 204	690-1040	1
15	WASHER COMPENSATION	695-1052	1
16	CUP SPRING WASHER 71x36x2 DIN 2093	695-1187	1
17	FLANGE SPACER SLEEVE	240-1229	25
18	STAR FLANGE	280-1164	26
19	CUP SPRING WASHER 71x36x2 DIN 2093	695-1187	1
20	HH SCREW M 12-35	850-2018	2
	HEX NUT M 12	260-1012	2

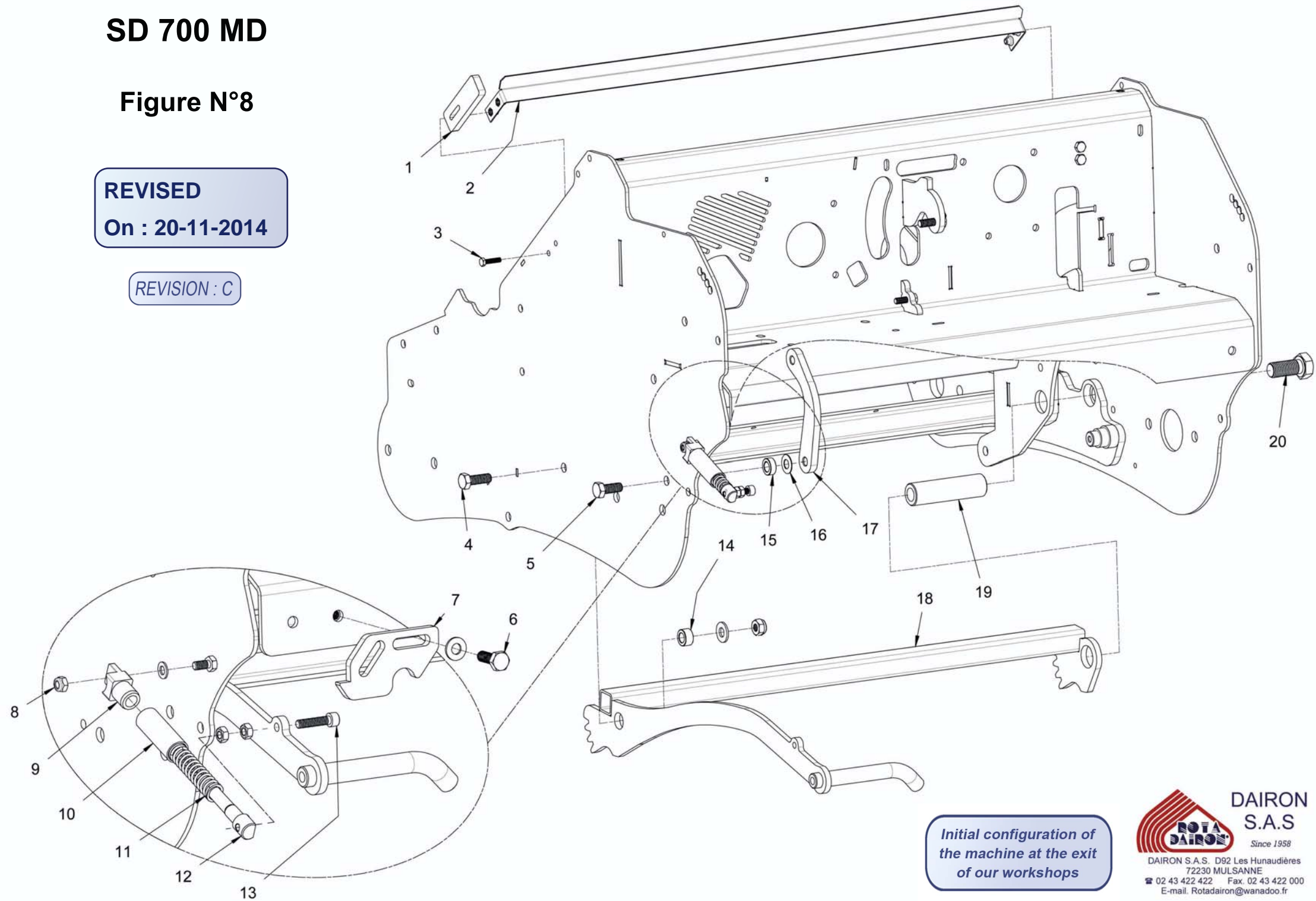
SD 700 MD

Figure N°8

REVISED

On : 20-11-2014

REVISION : C

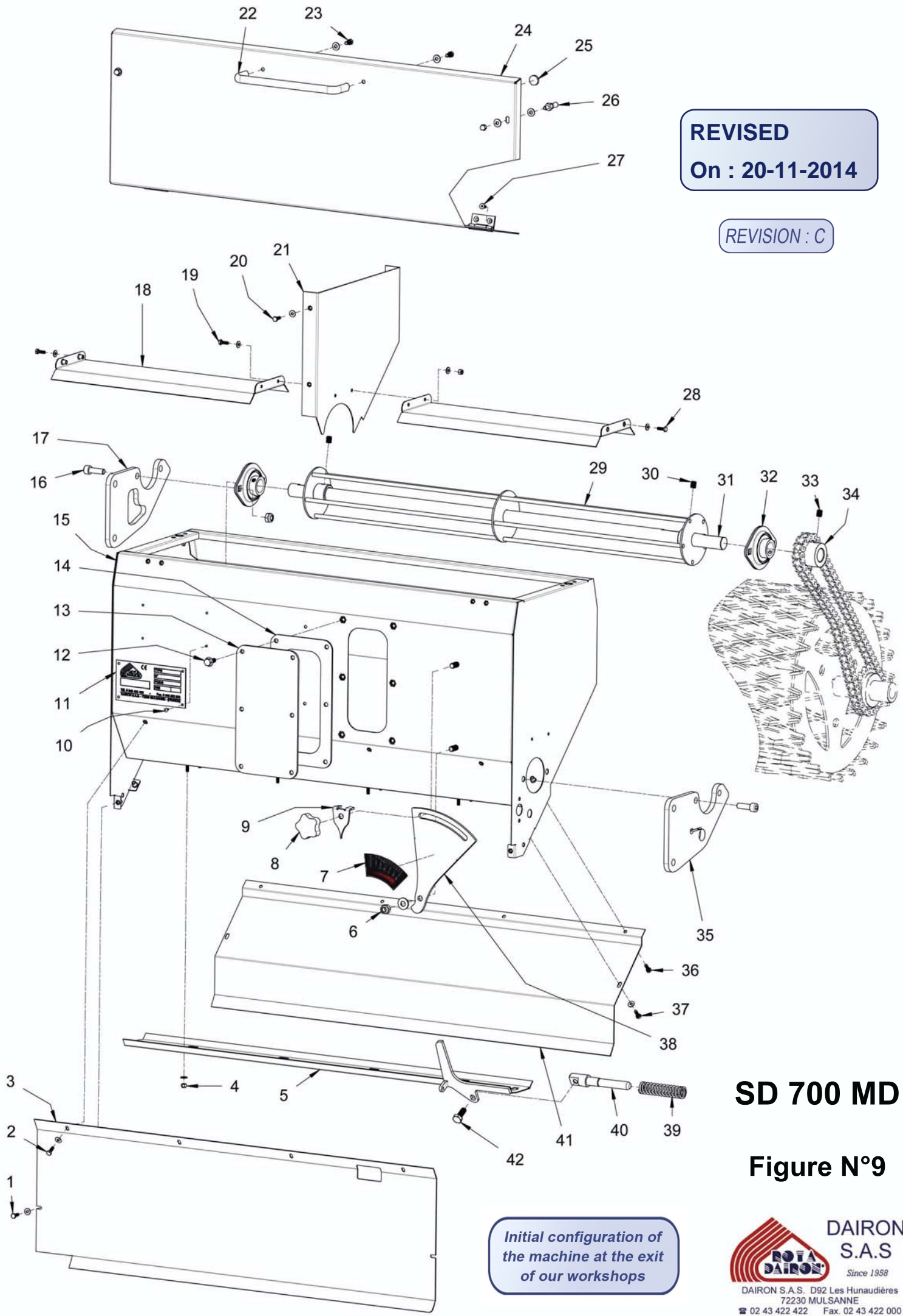


*Initial configuration of
the machine at the exit
of our workshops*

REV : C	PARTS LIST FIGURE N° 8 SD 700 MD FROM 9072 WITH - A017		20/11/2014
ITEM	DESIGNATION	PARTS REFERENCES	
		SD 700 MD	QTY
1	STOP (COLLECTING TROUGH)	157-1053	1
2	STAND (COLLETING TROUGH)	6701-770-1517	1
3	HH SCREW S/S A2 6 * 25 Din 933	850-4018	4
4	HH SCREW M 12-35	850-2018	1
	WASHER MU 12	695-1018	1
	HEX NUT M 12	260-1012	1
5	HH SCREW M 12-30	850-2016	2
6	HH SCREW M 10-30	850-2002	2
	WASHER MU 10	695-1017	2
	HEX NUT M 12	260-1011	2
7	STOP (ROTOR LIFT BAR)	157-1058	1
8	HEX NUT M 8	260-1010	1
	WASHER MU 8 YZP	695-1062	1
9	SPRING ROD CLEVIS	177-1068	1
10	SPRING SLEEVE TUBE	760-1327	1
11	SPRING	660-1017	1
12	SPRING AXLE	120-1163	1
13	HSHC SCREW M 8 -35 S/S	850-4007	1
14	PIVOT SOCKET	240-1031	1
15	SOCKET	240-1030	2
16	BELLEVILLE WASHER	695-1068	2
17	TENSIONER FLANGE	150-1011	1
18	ROTOR LIFT BAR	6702-750-1622	1
19	SOCKET Ø30 / M20 / L: 110	240-1225	1
20	HH SCREW M 20-45 YZP	850-2044	1

REVISED
On : 20-11-2014

REVISION : C



Initial configuration of the machine at the exit of our workshops

SD 700 MD

Figure N°9



DAIRON S.A.S. D92 Les Hunaudières
72230 MULSANNE
☎ 02 43 422 422 Fax. 02 43 422 000
E-mail. Rotadairon@wanadoo.fr

REV : C	PARTS LIST FIGURE N° 9 SD 700 MD FROM 9072 WITH - A017		20/11/2014
ITEM	DESIGNATION	PARTS REFERENCES	
		SD 700 MD	QTY
1	HH SCREW S/S A2 4 * 12 Din 933	850-4004	2
	WASHER S/S A2 MU 4	695-4001	2
2	HH SCREW S/S A2 4 * 12 Din 933	850-4004	4
	WASHER S/S A2 MU 4	695-4001	4
3	WINDBREAK PLATE	770-1516	1
4	NUT S/S A2 M4 DIN 985	260-4003	8
	WASHER S/S A2 MU 4	695-4001	8
5	SEEDER DISPENSER STRIP	6701-655-1010	1
6	NUT S/S A2 M8 DIN 985	260-4005	1
	WASHER S/S A2 MU 8	695-4009	1
7	DECAL - SEEDER OPENING RADIUS	460-1063	1
8	SETTING KNOB	610-1006	1
9	INDEX PIN	210-1009	1
10	RIVET Ø3 X 10	697-1002	4
11	MACHINE DATA PLATE	460-1010	1
12	HEX WASHER HEAD SCREW S/S A2 6 * 16	850-4024	6
13	VIEW WINDOW PLATE	640-1499	1
14	VIEW WINDOW SEAL	400-1054	1
15	CHAMBER	715-1020	1
16	HSHC SCREW S/S A2 8 * 25 Din 912	850-4039	4
	NUT S/S A2 M8 DIN 985	260-4005	4
17	CHAMBER FIXING FLANGE	270-1293	1
18	CHAMBER DEFLECTOR PLATE	770-1266	2
19	HH SCREW S/S A2 4 * 12 Din 933	850-4004	2
	WASHER S/S A2 MU 4	695-4001	4
	NUT S/S A2 M4 DIN 985	260-4003	2
20	HH SCREW S/S A2 4 * 12 Din 933	850-4004	3
	WASHER S/S A2 MU 4	695-4001	3
21	DIVIDER PLATE	270-1150	1
22	SEEDER LID HANDLE	610-1022	1
23	HEX WASHER HEAD SCREW S/S A2 5 * 10	850-4013	2
	WASHER S/S A2 MU 5	695-4004	2
24	SEEDER LID	6701-197-1031	1
25	SEAL polyolefin ABS black pad	400-1058	4
26	HOOK	199-1003	2
	WASHER S/S A2 MU 5	695-4004	4
	CAP NUT M5 S/S	260-4010	2

Initial configuration of the machine at the exit of our workshops

REV : C	PARTS LIST FIGURE N° 9 SD 700 MD FROM 9072 WITH - A017		20/11/2014
ITEM	DESIGNATION	PARTS REFERENCES	
		SD 700 MD	QTY
27	FHCS SCREW M4 - 10 S/S	850-4046	4
28	HH SCREW S/S A2 4 * 12 Din 933	850-4004	4
	WASHER S/S A2 MU 4	695-4001	4
29	MIXER	6076-280-1098	1
30	HHCS SCREW S/S A2 8 * 10	850-4001	2
31	MIXER SHAFT	120-1142	1
32	CAST-IRON BEARING SLFL 20	690-1022	2
33	HHCS SCREW S/S A2 8 * 10	850-4001	1
34	TOP SPROCKET 13T - 12.7 PITCH	600-1030	1
35	FLANC DE FIXATION DE CUVE	270-1304	1
36	VIS INOX A2 T.H 4 * 12 Din 933	850-4004	4
37	VIS INOX A2 T.H 4 * 12 Din 933	850-4004	2
	RONDELLE INOX A2 MU 4	695-4001	2
38	CHAMBER FIXING FLANGE	640-1558	1
39	SPRING	660-1017	1
40	AXIS OF SPRING	120-1146	1
41	CHAMBER DEFLECTOR PLATE	770-1554	1
42	HH SCREW S/S A2 8 * 20 Din 933	850-4034	1