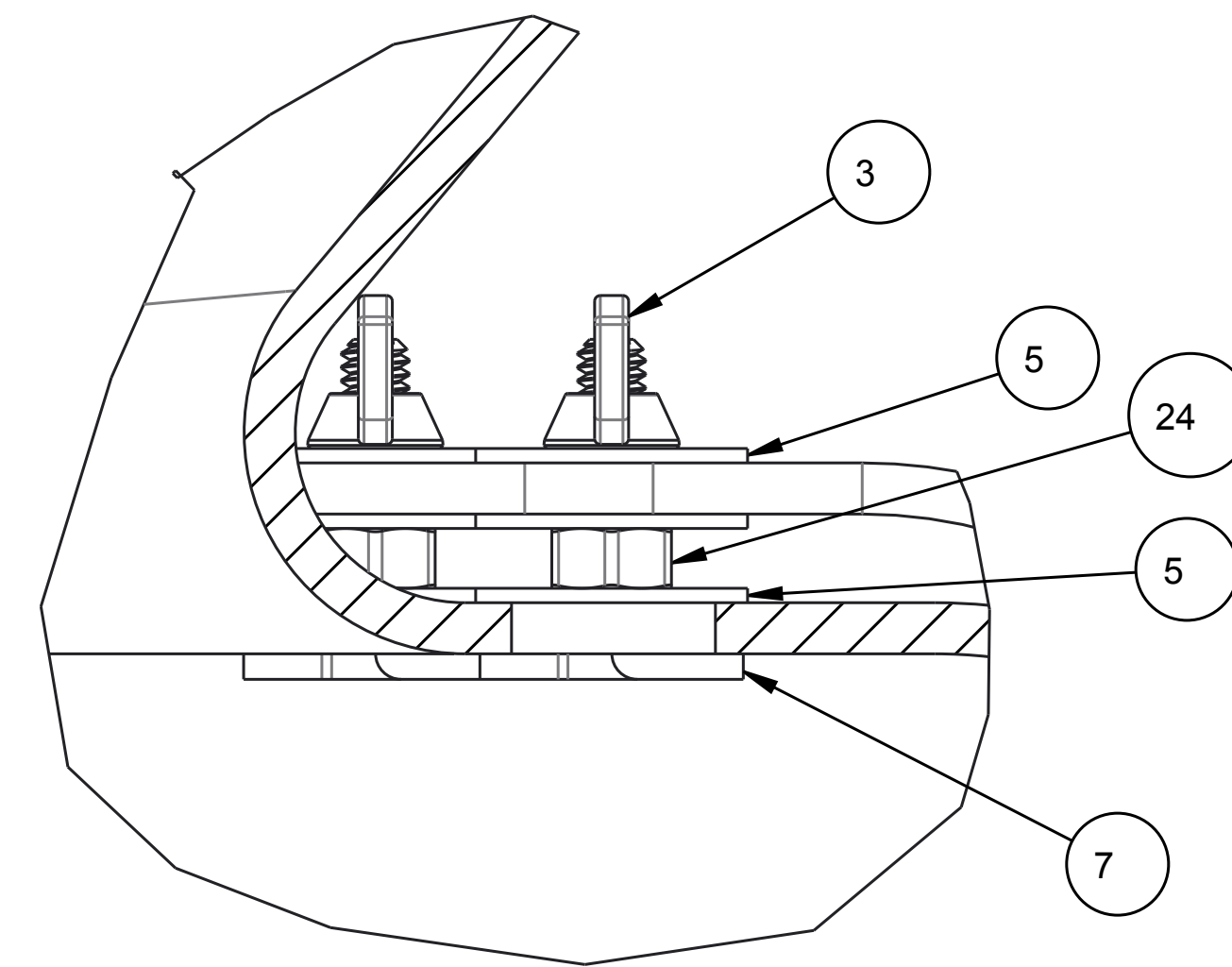
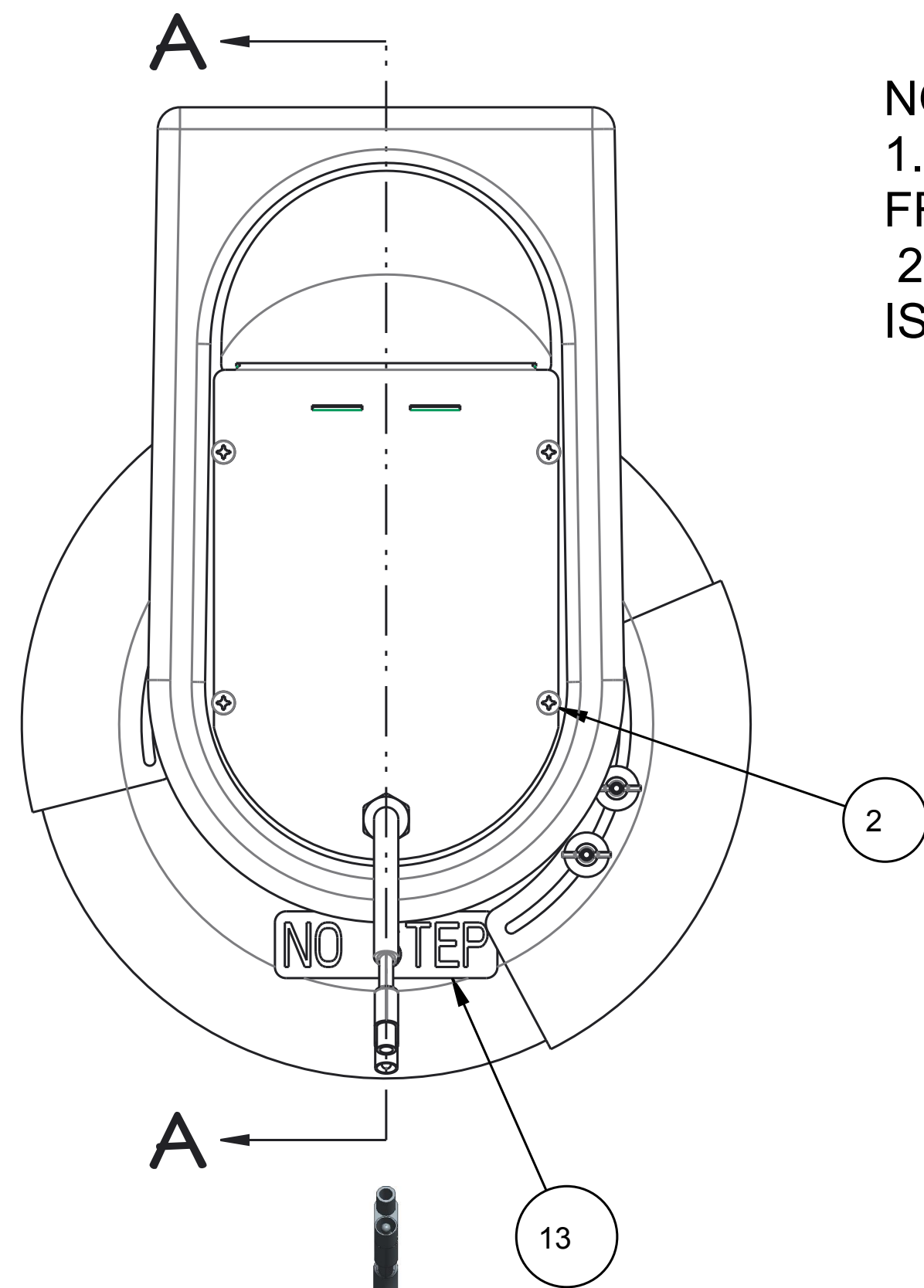
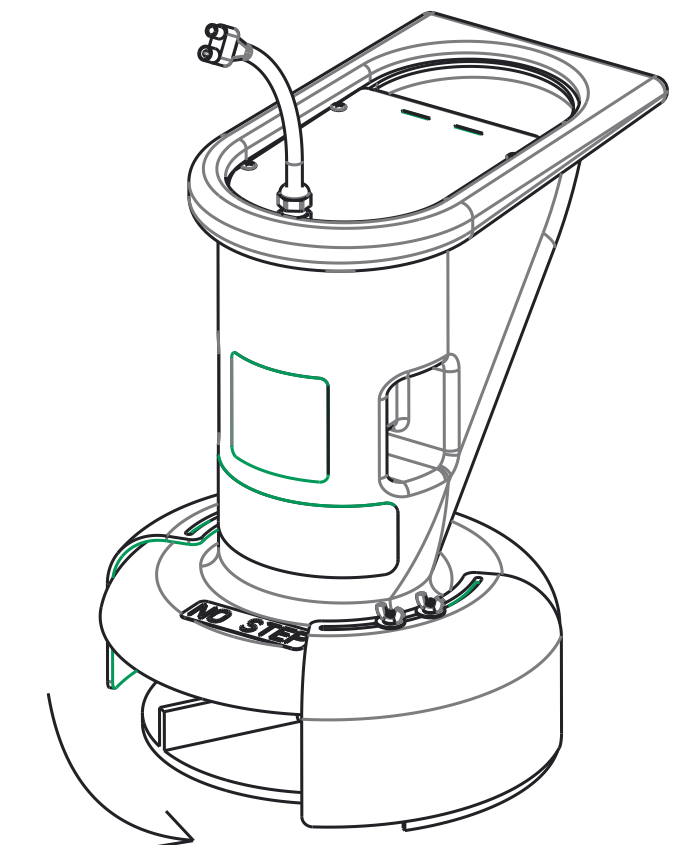


64921					
REVISED	BY	REVISIONS	DATE	RELEASED BY	CHECKED BY
15-006	A	ITEM 1 P/N 66145 WAS 64478, ITEM 23 P/N 14189 WAS 64849, REVISED TO MEYER BORDER	27-MAY-15	DJW	JK
15-026	B	ITEM #22 P/N 14258 WAS 66145	14-SEP-15	DFB	DJW
16-002	C	ITEM 9 P/N WAS 64836	27-JAN-16	DJW	
17-012	D	ADDED ITEM 24 20524 QTY OF 4	28-MAR-17	DJW	
17-021	E	ITEM 10 WAS P/N 64835	24-APR-17	DJW	

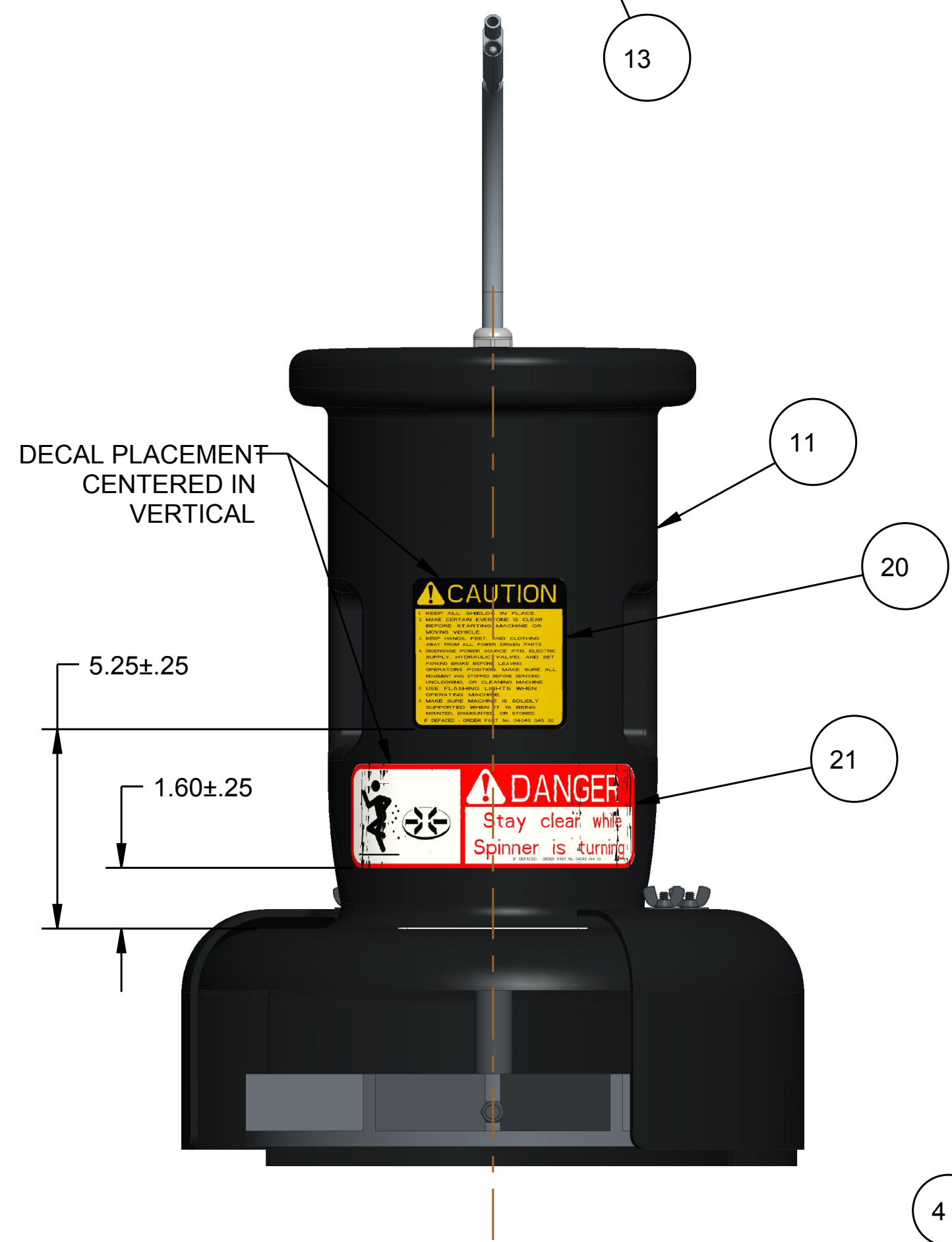
NOTES:
 1. PART # 64482 - CUT TO OVERALL LENGTH OF 20" FROM THE PLUG END BEFORE ATTACHING 64902 CONNECTORS(2).
 2. WIRING NOTE: THE MOTOR-TO-HARNESS WIRING SCHEMATIC IS TO BE POSTIVE TO NEGATIVE AND NEGATIVE TO POSITIVE.



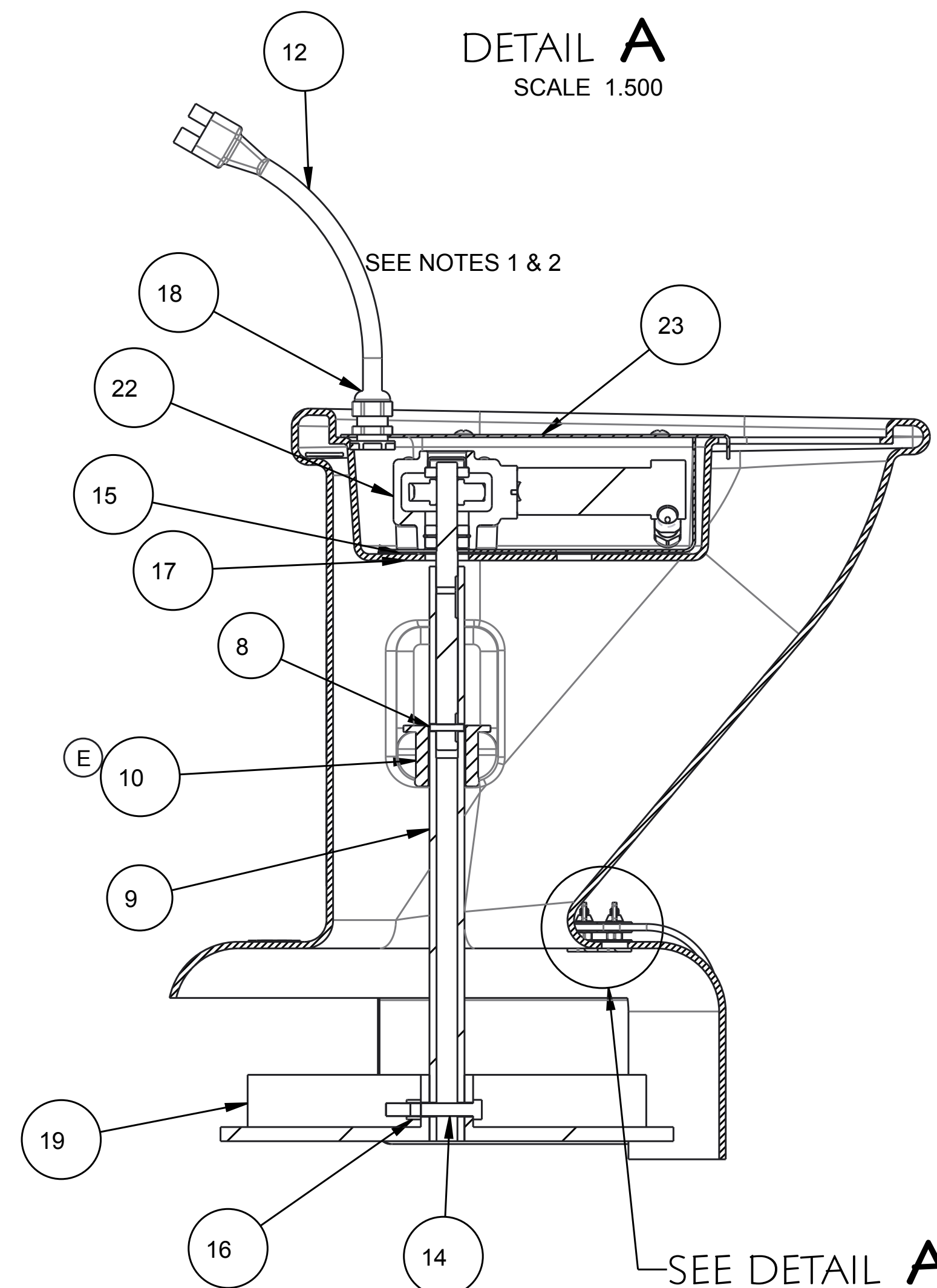
DETAIL A
SCALE 1.500



SPINNER ROTATION:
COUNTERCLOCKWISE



DECAL PLACEMENT
CENTERED IN
VERTICAL



SECTION A-A

BILL OF MATERIAL					
ITEM	QTY	DESCRIPTION	PART NO.	MATERIAL	WEIGHT
(D)	24	HEX NUT 1/4-20	20524	PLAIN STEEL	0.01
(B)	23	WELD, SPINNER BRKT (KARRIER)	14189		
	22	SPINNER MTR/GEARBOX XFIRE (KARRIER)	14258		
	21	DECAL, DANGER (SPINNER)	62006_	SEE PRINT	
	20	DECAL, CAUTION	62007_	SEE PRINT	
	19	DISC, POLY SPINNER 13"	62146		
	18	CORD GRIP	62160		
	17	1/4"-20X3/4" HH BOLT SS	62189	ST. STL.	0.02
	16	3/8"-16 NYLON LOCKNUT SS	62638	STAINLESS STEEL	
	15	1/4"-LOCKWASHER SS	62810	STN STL	0.01
	14	3/8"-16x2.5" HH BOLT S.S.	63198	STAINLESS STEEL	0.02
	13	DECAL, NO STEP	64080		
	12	HARNESS, ELECTRIC MOTOR	64482	PURCHASED	
	11	SPINNER CHUTE, SHORT	64755	SEE PRINT	
(E)	10	BEARING, SPINNER	66274	SEE PRINT	
(C)	9	SHAFT, SPINNER (XFIRE)	64836CF	SEE PRINT	
	8	PIN, 3/16" X 1" ROLL CS	64837		
	7	BOLT, 1/4-20 FLUSH-HD FANGED	64841	SEE PRINT	
	5	1/4" FENDER FLATWASHER ZP	64843	ST. STL.	
	4	BAFFLE, SPINNER	64844	SEE PRINT	
	3	NUT, 1/4-20 WING	64845	PURCHASED	
	2	SCREW, 18-8x1" SHT MTL SS	64850	SEE PRINT	
	1	CONNECTOR, REDUCING BUTT 12 TO 16	64902	PURCHASED	

TOTAL ASSEMBLY WEIGHT (lbs):

SCALE: 0.30:1	Weld (in): 0.00	Finish:
DWN BY: CAN	CHECKED BY:	REF DWG:
DATE: 4/30/12	DATE:	FIRST APPL:

SPINNER CHUTE - STD SHORT

Meyer PRODUCTS CLEVELAND, OHIO 44112	64921	REV E
---	-------	----------

DO NOT
SCALE
DRAWING

THIS PRINT AND ALL INFORMATION THEREON IS THE SOLE PROPERTY OF MEYER PRODUCTS AND ARE PROVIDED ON A RESTRICTED BASIS. THIS DRAWING MUST NOT BE USED IN ANY MANNER DETRIMENTAL TO THE INTERESTS OF MEYER PRODUCTS. FEDERAL LAW PROHIBITS THE DISPLAY, REPRODUCTION, SALE OR OTHER DISPOSITION OF THIS DOCUMENT WITHOUT THE EXPRESS WRITTEN CONSENT OF MEYER PRODUCTS.

UNLESS OTHERWISE SPECIFIED

DECIMAL DIM. ENGLISH
 1. 2 PLACE .XX ± .03
 2. 3 PLACE .XXX ± .010
 3. 3/16 PARALLEL ± .001 IN 12
 4. ALL DIAMETERS ON SAME C/L TO BE CONCENTRIC WITHIN .005 T.I.R.
 5. ANGULAR DIM. ± 1°

FILLET WELDS TO BE
1/4 IN. X 1/8

ENGLISH-INCH